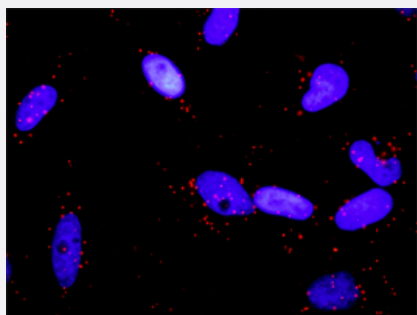


RALBP1 & RALA Protein Protein Interaction Antibody Pair

Catalog # DI0347

Size 1 Set

Applications



Representative image of Proximity Ligation Assay of protein-protein interactions between RALBP1 and RALA. HeLa cells were stained with anti-RALBP1 rabbit purified polyclonal antibody 1:1200 and anti-RALA mouse monoclonal antibody 1:50. Each red dot represents the detection of protein-protein interaction complex. The images were analyzed using an optimized freeware (BlobFinder) download from The Centre for Image Analysis at Uppsala University.

Specification

Product Description

This protein protein interaction antibody pair set comes with two antibodies to detect the protein-protein interaction, one against the RALBP1 protein, and the other against the RALA protein for use in [in situ Proximity Ligation Assay](#). [See Publication Reference below](#).

Reactivity

Human

Quality Control Testing

Protein protein interaction immunofluorescence result.
Representative image of Proximity Ligation Assay of protein-protein interactions between RALBP1 and RALA. HeLa cells were stained with anti-RALBP1 rabbit purified polyclonal antibody 1:1200 and anti-RALA mouse monoclonal antibody 1:50. Each red dot represents the detection of protein-protein interaction complex. The images were analyzed using an optimized freeware (BlobFinder) download from The Centre for Image Analysis at Uppsala University.

Supplied Product

Antibody pair set content:
1. RALBP1 rabbit purified polyclonal antibody (100 ug)
2. RALA mouse monoclonal antibody (40 ug)
*Reagents are sufficient for at least 30-50 assays using recommended protocols.

Storage Instruction

Store reagents of the antibody pair set at -20°C or lower. Please aliquot to avoid repeated freeze-thaw cycle. Reagents should be returned to -20°C storage immediately after use.

Applications

- *In situ* Proximity Ligation Assay (Cell)

Gene Info — RALA

Entrez GeneID	5898
Gene Name	RALA
Gene Alias	MGC48949, RAL
Gene Description	v-ral simian leukemia viral oncogene homolog A (ras related)
Omim ID	179550
Gene Ontology	Hyperlink
Gene Summary	The product of this gene belongs to the small GTPase superfamily, Ras family of proteins. GTP-binding proteins mediate the transmembrane signaling initiated by the occupancy of certain cell surface receptors. This gene encodes a low molecular mass ras-like GTP-binding protein that shares about 50% similarity with other ras proteins. [provided by RefSeq]
Other Designations	RAS-like protein A Ras family small GTP binding protein RALA Ras-related protein Ral-A ras related v-ral simian leukemia viral oncogene homolog A

Gene Info — RALBP1

Entrez GeneID	10928
Gene Name	RALBP1
Gene Alias	RIP1, RLIP1, RLIP76
Gene Description	ralA binding protein 1
Omim ID	605801
Gene Ontology	Hyperlink
Other Designations	OTTHUMP00000162351 ral-interacting protein 1 ralA-binding protein 1

Pathway

- [Pancreatic cancer](#)

- [Pancreatic cancer](#)
- [Pathways in cancer](#)
- [Pathways in cancer](#)

Disease

- [Epilepsy](#)
- [Tobacco Use Disorder](#)