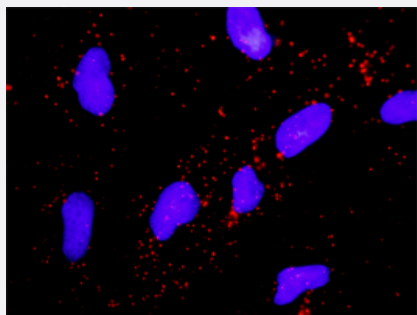


HSPB1 & MAPKAPK2 Protein Protein Interaction Antibody Pair

Catalog # DI0338

Size 1 Set

Applications



Representative image of Proximity Ligation Assay of protein-protein interactions between HSPB1 and MAPKAPK2. HeLa cells were stained with anti-HSPB1 rabbit purified polyclonal antibody 1:1200 and anti-MAPKAPK2 mouse monoclonal antibody 1:50. Each red dot represents the detection of protein-protein interaction complex. The images were analyzed using an optimized freeware (BlobFinder) download from The Centre for Image Analysis at Uppsala University.

Specification

Product Description

This protein protein interaction antibody pair set comes with two antibodies to detect the protein-protein interaction, one against the HSPB1 protein, and the other against the MAPKAPK2 protein for use in [in situ Proximity Ligation Assay](#). [See Publication Reference below](#).

Reactivity

Human

Quality Control Testing

Protein protein interaction immunofluorescence result.
Representative image of Proximity Ligation Assay of protein-protein interactions between HSPB1 and MAPKAPK2. HeLa cells were stained with anti-HSPB1 rabbit purified polyclonal antibody 1:1200 and anti-MAPKAPK2 mouse monoclonal antibody 1:50. Each red dot represents the detection of protein-protein interaction complex. The images were analyzed using an optimized freeware (BlobFinder) download from The Centre for Image Analysis at Uppsala University.

Supplied Product

Antibody pair set content:
1. HSPB1 rabbit purified polyclonal antibody (100 ug)
2. MAPKAPK2 mouse monoclonal antibody (40 ug)
*Reagents are sufficient for at least 30-50 assays using recommended protocols.

Storage Instruction

Store reagents of the antibody pair set at -20°C or lower. Please aliquot to avoid repeated freeze-thaw cycle. Reagents should be returned to -20°C storage immediately after use.

Applications

- *In situ* Proximity Ligation Assay (Cell)

Gene Info — HSPB1

Entrez GeneID	3315
Gene Name	HSPB1
Gene Alias	CMT2F, DKFZp586P1322, HMN2B, HS.76067, HSP27, HSP28, Hsp25, SRP27
Gene Description	heat shock 27kDa protein 1
Omim ID	602195 606595 608634
Gene Ontology	Hyperlink
Gene Summary	The protein encoded by this gene is induced by environmental stress and developmental changes . The encoded protein is involved in stress resistance and actin organization and translocates from the cytoplasm to the nucleus upon stress induction. Defects in this gene are a cause of Charcot-Marie-Tooth disease type 2F (CMT2F) and distal hereditary motor neuropathy (dHMN). [provided by RefSeq]
Other Designations	OTTHUMP00000024846 estrogen-regulated 24 kDa protein heat shock 27kD protein 1 heat shock protein beta-1 stress-responsive protein 27

Gene Info — MAPKAPK2

Entrez GeneID	9261
Gene Name	MAPKAPK2
Gene Alias	MK2
Gene Description	mitogen-activated protein kinase-activated protein kinase 2
Omim ID	602006
Gene Ontology	Hyperlink

Gene Summary

This gene encodes a member of the Ser/Thr protein kinase family. This kinase is regulated through direct phosphorylation by p38 MAP kinase. In conjunction with p38 MAP kinase, this kinase is known to be involved in many cellular processes including stress and inflammatory responses, nuclear export, gene expression regulation and cell proliferation. Heat shock protein HSP27 was shown to be one of the substrates of this kinase in vivo. Two transcript variants encoding two different isoforms have been found for this gene. [provided by RefSeq]

Other Designations

OTTHUMP00000034531|OTTHUMP00000034532

Pathway

- [MAPK signaling pathway](#)
- [MAPK signaling pathway](#)
- [Neurotrophin signaling pathway](#)
- [VEGF signaling pathway](#)
- [VEGF signaling pathway](#)

Disease

- [Adenocarcinoma](#)
- [Carcinoma](#)
- [Charcot-Marie-Tooth Disease](#)
- [Diabetic Nephropathies](#)
- [Genetic Predisposition to Disease](#)
- [Lung Neoplasms](#)
- [Small Cell Lung Carcinoma](#)