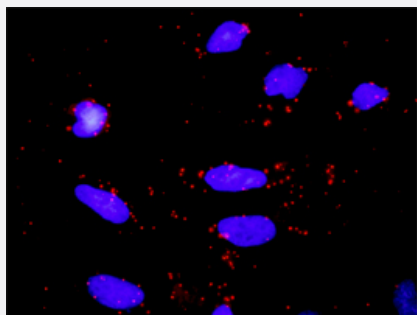


RPS6KA3 & MAPK1 Protein Protein Interaction Antibody Pair

Catalog # DI0326

Size 1 Set

Applications



Representative image of Proximity Ligation Assay of protein-protein interactions between RPS6KA3 and MAPK1. HeLa cells were stained with anti-RPS6KA3 rabbit purified polyclonal antibody 1:1200 and anti-MAPK1 mouse monoclonal antibody 1:50. Each red dot represents the detection of protein-protein interaction complex. The images were analyzed using an optimized freeware (BlobFinder) download from The Centre for Image Analysis at Uppsala University.

Specification

Product Description

This protein protein interaction antibody pair set comes with two antibodies to detect the protein-protein interaction, one against the RPS6KA3 protein, and the other against the MAPK1 protein for use in [in situ Proximity Ligation Assay](#). [See Publication Reference below](#).

Reactivity

Human

Quality Control Testing

Protein protein interaction immunofluorescence result.
Representative image of Proximity Ligation Assay of protein-protein interactions between RPS6KA3 and MAPK1. HeLa cells were stained with anti-RPS6KA3 rabbit purified polyclonal antibody 1:1200 and anti-MAPK1 mouse monoclonal antibody 1:50. Each red dot represents the detection of protein-protein interaction complex. The images were analyzed using an optimized freeware (BlobFinder) download from The Centre for Image Analysis at Uppsala University.

Supplied Product

Antibody pair set content:
1. RPS6KA3 rabbit purified polyclonal antibody (100 ug)
2. MAPK1 mouse monoclonal antibody (40 ug)
*Reagents are sufficient for at least 30-50 assays using recommended protocols.

Storage Instruction

Store reagents of the antibody pair set at -20°C or lower. Please aliquot to avoid repeated freeze-thaw cycle. Reagents should be returned to -20°C storage immediately after use.

Applications

- *In situ* Proximity Ligation Assay (Cell)

Gene Info — MAPK1

Entrez GeneID	5594
Gene Name	MAPK1
Gene Alias	ERK, ERK2, ERT1, MAPK2, P42MAPK, PRKM1, PRKM2, p38, p40, p41, p41mapk
Gene Description	mitogen-activated protein kinase 1
Omim ID	176948
Gene Ontology	Hyperlink
Gene Summary	The protein encoded by this gene is a member of the MAP kinase family. MAP kinases, also known as extracellular signal-regulated kinases (ERKs), act as an integration point for multiple biochemical signals, and are involved in a wide variety of cellular processes such as proliferation, differentiation, transcription regulation and development. The activation of this kinase requires its phosphorylation by upstream kinases. Upon activation, this kinase translocates to the nucleus of the stimulated cells, where it phosphorylates nuclear targets. Two alternatively spliced transcript variants encoding the same protein, but differing in the UTRs, have been reported for this gene. [provided by RefSeq]
Other Designations	OTTHUMP00000174492 extracellular signal-regulated kinase 2 extracellular signal-regulated kinase-2 mitogen-activated protein kinase 2 protein tyrosine kinase ERK2

Gene Info — RPS6KA3

Entrez GeneID	6197
Gene Name	RPS6KA3
Gene Alias	CLS, HU-3, ISPK-1, MAPKAPK1B, MRX19, RSK, RSK2, S6K-alpha3, p90-RSK2, pp90RSK2
Gene Description	ribosomal protein S6 kinase, 90kDa, polypeptide 3
Omim ID	300075 303600
Gene Ontology	Hyperlink

Gene Summary

This gene encodes a member of the RSK (ribosomal S6 kinase) family of serine/threonine kinases. This kinase contains 2 non-identical kinase catalytic domains and phosphorylates various substrates, including members of the mitogen-activated kinase (MAPK) signalling pathway. The activity of this protein has been implicated in controlling cell growth and differentiation. Mutations in this gene have been associated with Coffin-Lowry syndrome (CLS). [provided by RefSeq]

Other Designations

OTTHUMP00000023036|insulin-stimulated protein kinase 1|mental retardation, X-linked 19|ribosomal protein S6 kinase, 90kD, polypeptide 3

Pathway

- [Acute myeloid leukemia](#)
- [Adherens junction](#)
- [Axon guidance](#)
- [B cell receptor signaling pathway](#)
- [Bladder cancer](#)
- [Chemokine signaling pathway](#)
- [Chronic myeloid leukemia](#)
- [Colorectal cancer](#)
- [Dorso-ventral axis formation](#)
- [Endometrial cancer](#)
- [ErbB signaling pathway](#)
- [Fc epsilon RI signaling pathway](#)
- [Fc gamma R-mediated phagocytosis](#)
- [Focal adhesion](#)
- [Gap junction](#)
- [Glioma](#)
- [GnRH signaling pathway](#)
- [Insulin signaling pathway](#)
- [Long-term depression](#)

- [Long-term potentiation](#)
- [Long-term potentiation](#)
- [MAPK signaling pathway](#)
- [MAPK signaling pathway](#)
- [Melanogenesis](#)
- [Melanoma](#)
- [mTOR signaling pathway](#)
- [mTOR signaling pathway](#)
- [Natural killer cell mediated cytotoxicity](#)
- [Neurotrophin signaling pathway](#)
- [Neurotrophin signaling pathway](#)
- [Non-small cell lung cancer](#)
- [Pancreatic cancer](#)
- [Pathways in cancer](#)
- [Prion diseases](#)
- [Prostate cancer](#)
- [Regulation of actin cytoskeleton](#)
- [Renal cell carcinoma](#)
- [T cell receptor signaling pathway](#)
- [TGF-beta signaling pathway](#)
- [Thyroid cancer](#)
- [Toll-like receptor signaling pathway](#)
- [Type II diabetes mellitus](#)
- [Vascular smooth muscle contraction](#)
- [VEGF signaling pathway](#)

Disease

- [Anorexia Nervosa](#)
- [Asthma](#)
- [Bulimia](#)
- [Cardiovascular Diseases](#)
- [Diabetes Mellitus](#)
- [Disease Models](#)
- [Edema](#)
- [Genetic Predisposition to Disease](#)
- [Head and Neck Neoplasms](#)
- [HIV Infections](#)
- [Kidney Failure](#)
- [Narcolepsy](#)
- [Neoplasm Recurrence](#)
- [Neoplasms](#)
- [Ovarian Neoplasms](#)
- [Thyroid Neoplasms](#)