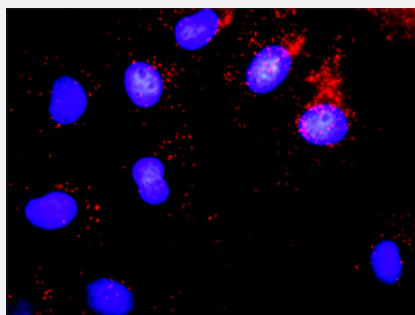


# MYBL2 & RBL1 Protein Protein Interaction Antibody Pair

Catalog # DI0187

Size 1 Set

## Applications



Representative image of Proximity Ligation Assay of protein-protein interactions between MYBL2 and RBL1. Mahlavu cells were stained with anti-MYBL2 rabbit purified polyclonal antibody 1:1200 and anti-RBL1 mouse monoclonal antibody 1:50. Each red dot represents the detection of protein-protein interaction complex. The images were analyzed using an optimized freeware (BlobFinder) download from The Centre for Image Analysis at Uppsala University.

## Specification

### Product Description

This protein protein interaction antibody pair set comes with two antibodies to detect the protein-protein interaction, one against the MYBL2 protein, and the other against the RBL1 protein for use in [in situ Proximity Ligation Assay](#). [See Publication Reference below](#).

### Reactivity

Human

### Quality Control Testing

Protein protein interaction immunofluorescence result.  
Representative image of Proximity Ligation Assay of protein-protein interactions between MYBL2 and RBL1. Mahlavu cells were stained with anti-MYBL2 rabbit purified polyclonal antibody 1:1200 and anti-RBL1 mouse monoclonal antibody 1:50. Each red dot represents the detection of protein-protein interaction complex. The images were analyzed using an optimized freeware (BlobFinder) download from The Centre for Image Analysis at Uppsala University.

### Supplied Product

Antibody pair set content:  
1. MYBL2 rabbit purified polyclonal antibody (100 ug)  
2. RBL1 mouse monoclonal antibody (40 ug)  
\*Reagents are sufficient for at least 30-50 assays using recommended protocols.

### Storage Instruction

Store reagents of the antibody pair set at -20°C or lower. Please aliquot to avoid repeated freeze-thaw cycle. Reagents should be returned to -20°C storage immediately after use.

## Applications

- *In situ* Proximity Ligation Assay (Cell)

## Gene Info — MYBL2

Entrez GeneID	<a href="#">4605</a>
Gene Name	MYBL2
Gene Alias	B-MYB, BMYB, MGC15600
Gene Description	v-myb myeloblastosis viral oncogene homolog (avian)-like 2
Omim ID	<a href="#">601415</a>
Gene Ontology	<a href="#">Hyperlink</a>
Gene Summary	<p>The protein encoded by this gene, a member of the MYB family of transcription factor genes, is a nuclear protein involved in cell cycle progression. The encoded protein is phosphorylated by cyclin A/cyclin-dependent kinase 2 during the S-phase of the cell cycle and possesses both activator and repressor activities. It has been shown to activate the cell division cycle 2, cyclin D1, and insulin-like growth factor-binding protein 5 genes. Transcript variants may exist for this gene, but their full-length natures have not been determined. [provided by RefSeq]</p>
Other Designations	MYB-related protein B OTTHUMP00000031719 v-myb avian myeloblastosis viral oncogene homolog-like 2

## Gene Info — RBL1

Entrez GeneID	<a href="#">5933</a>
Gene Name	RBL1
Gene Alias	CP107, MGC40006, PRB1, p107
Gene Description	retinoblastoma-like 1 (p107)
Omim ID	<a href="#">116957</a>
Gene Ontology	<a href="#">Hyperlink</a>

**Gene Summary**

The protein encoded by this gene is similar in sequence and possibly function to the product of the retinoblastoma 1 (RB1) gene. The RB1 gene product is a tumor suppressor protein that appears to be involved in cell cycle regulation, as it is phosphorylated in the S to M phase transition and is dephosphorylated in the G1 phase of the cell cycle. Both the RB1 protein and the product of this gene can form a complex with adenovirus E1A protein and SV40 large T-antigen, with the SV40 large T-antigen binding only to the unphosphorylated form of each protein. In addition, both proteins can inhibit the transcription of cell cycle genes containing E2F binding sites in their promoters. Due to the sequence and biochemical similarities with the RB1 protein, it is thought that the protein encoded by this gene may also be a tumor suppressor. Two transcript variants encoding different isoforms have been found for this gene. [provided by RefSeq]

**Other Designations**

107 kDa retinoblastoma-associated protein|OTTHUMP00000030892|OTTHUMP00000030893|cellular protein 107|retinoblastoma-like protein 1

**Pathway**

- [Cell cycle](#)
- [TGF-beta signaling pathway](#)

**Disease**

- [Adenocarcinoma](#)
- [Esophageal Neoplasms](#)
- [Genetic Predisposition to Disease](#)
- [Genetic Predisposition to Disease](#)
- [Lung Neoplasms](#)
- [Ovarian Neoplasms](#)
- [Pulmonary Disease](#)
- [Tobacco Use Disorder](#)
- [Urinary Bladder Neoplasms](#)
- [Werner syndrome](#)