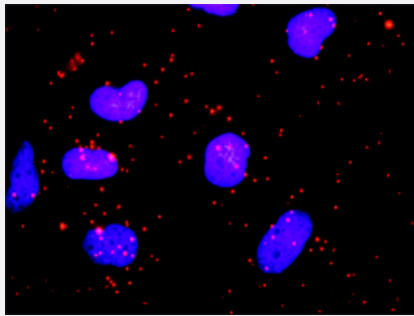


HIP1 & CLTC Protein Protein Interaction Antibody Pair

Catalog # DI0102

Size 1 Set

Applications



Representative image of Proximity Ligation Assay of protein-protein interactions between HIP1 and CLTC. HeLa cells were stained with anti-HIP1 rabbit purified polyclonal antibody 1:1200 and anti-CLTC mouse monoclonal antibody 1:50. Each red dot represents the detection of protein-protein interaction complex. The images were analyzed using an optimized freeware (BlobFinder) download from The Centre for Image Analysis at Uppsala University.

Specification

Product Description

This protein protein interaction antibody pair set comes with two antibodies to detect the protein-protein interaction, one against the HIP1 protein, and the other against the CLTC protein for use in [in situ Proximity Ligation Assay](#). [See Publication Reference below](#).

Reactivity

Human

Quality Control Testing

Protein protein interaction immunofluorescence result.

Representative image of Proximity Ligation Assay of protein-protein interactions between HIP1 and CLTC. HeLa cells were stained with anti-HIP1 rabbit purified polyclonal antibody 1:1200 and anti-CLTC mouse monoclonal antibody 1:50. Each red dot represents the detection of protein-protein interaction complex. The images were analyzed using an optimized freeware (BlobFinder) download from The Centre for Image Analysis at Uppsala University.

Supplied Product

Antibody pair set content:

1. HIP1 rabbit purified polyclonal antibody (100 ug)
2. CLTC mouse monoclonal antibody (40 ug)

*Reagents are sufficient for at least 30-50 assays using recommended protocols.

Storage Instruction

Store reagents of the antibody pair set at -20°C or lower. Please aliquot to avoid repeated freeze thaw cycle. Reagents should be returned to -20°C storage immediately after use.

Applications

- *In situ* Proximity Ligation Assay (Cell)

Gene Info — CLTC

Entrez GeneID	1213
Gene Name	CLTC
Gene Alias	CHC, CHC17, CLH-17, CLTCL2, Hc, KIAA0034
Gene Description	clathrin, heavy chain (Hc)
Omim ID	118955
Gene Ontology	Hyperlink
Gene Summary	Clathrin is a major protein component of the cytoplasmic face of intracellular organelles, called coated vesicles and coated pits. These specialized organelles are involved in the intracellular trafficking of receptors and endocytosis of a variety of macromolecules. The basic subunit of the clathrin coat is composed of three heavy chains and three light chains. [provided by RefSeq]
Other Designations	clathrin heavy chain 1 clathrin, heavy polypeptide (Hc) clathrin, heavy polypeptide-like 2

Gene Info — HIP1

Entrez GeneID	3092
Gene Name	HIP1
Gene Alias	ILWEQ, MGC126506
Gene Description	huntingtin interacting protein 1
Omim ID	176807 601767
Gene Ontology	Hyperlink
Gene Summary	The product of this gene is a membrane-associated protein that colocalizes with huntingtin. This protein has similarities to cytoskeleton proteins and its interaction with huntingtin is thought to play a functional role in the cell filament network. Loss of normal huntingtin-HIP1 interaction in Huntington disease may contribute to a defect in membrane-cytoskeletal integrity in the brain. This gene could help in the understanding of the normal function of huntingtin and also the pathogenesis of Huntington disease. It also has been implicated in the pathogenesis of hematopoietic malignancies. An alternative splice variant of this gene has been described but its full length sequence has not been determined. [provided by RefSeq]
Other Designations	-

Pathway

- [Endocytosis](#)
- [Lysosome](#)

Disease

- [Cardiovascular Diseases](#)
- [Diabetes Mellitus](#)
- [Edema](#)
- [Huntington disease](#)