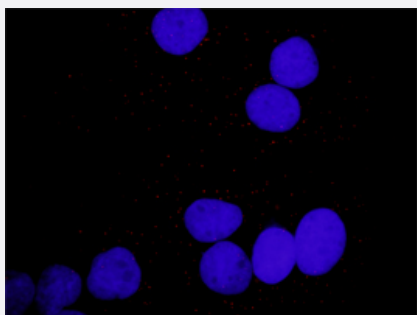


PDGFA & PLCG1 Protein Protein Interaction Antibody Pair

Catalog # DI0045

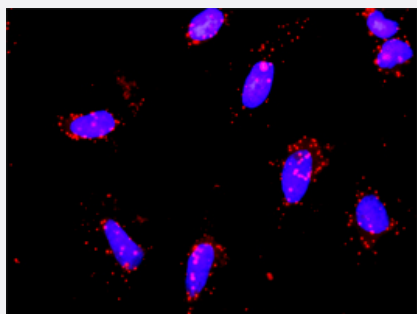
Size 1 Set

Applications



In situ Proximity Ligation Assay (Cell)

Representative image of Proximity Ligation Assay of protein-protein interactions between PDGFA and PLCG1. Huh7 cells were stained with anti-PDGFA rabbit purified polyclonal antibody 1:1200 and anti-PLCG1 mouse monoclonal antibody 1:50. Each red dot represents the detection of protein-protein interaction complex, and nuclei were counterstained with DAPI (blue).



Representative image of Proximity Ligation Assay of protein-protein interactions between PDGFA and PLCG1. HeLa cells were stained with anti-PDGFA rabbit purified polyclonal antibody 1:1200 and anti-PLCG1 mouse monoclonal antibody 1:50. Each red dot represents the detection of protein-protein interaction complex. The images were analyzed using an optimized freeware (BlobFinder) download from The Centre for Image Analysis at Uppsala University.

Specification

Product Description

This protein protein interaction antibody pair set comes with two antibodies to detect the protein-protein interaction, one against the PDGFA protein, and the other against the PLCG1 protein for use in [in situ Proximity Ligation Assay](#). See [Publication Reference below](#).

Reactivity

Human

Quality Control Testing

Protein protein interaction immunofluorescence result.
Representative image of Proximity Ligation Assay of protein-protein interactions between PDGFA and PLCG1. HeLa cells were stained with anti-PDGFA rabbit purified polyclonal antibody 1:1200 and anti-PLCG1 mouse monoclonal antibody 1:50. Each red dot represents the detection of protein-protein interaction complex. The images were analyzed using an optimized freeware (BlobFinder) download from The Centre for Image Analysis at Uppsala University.

Supplied Product

Antibody pair set content:

1. PDGFA rabbit purified polyclonal antibody (100 ug)
2. PLCG1 mouse monoclonal antibody (40 ug)

*Reagents are sufficient for at least 30-50 assays using recommended protocols.

Storage Instruction

Store reagents of the antibody pair set at -20°C or lower. Please aliquot to avoid repeated freeze thaw cycle. Reagents should be returned to -20°C storage immediately after use.

Applications

- *In situ* Proximity Ligation Assay (Cell)

Representative image of Proximity Ligation Assay of protein-protein interactions between PDGFA and PLCG1. Huh7 cells were stained with anti-PDGFA rabbit purified polyclonal antibody 1:1200 and anti-PLCG1 mouse monoclonal antibody 1:50. Each red dot represents the detection of protein-protein interaction complex, and nuclei were counterstained with DAPI (blue).

Gene Info — PDGFA

Entrez GeneID[5154](#)**Gene Name**

PDGFA

Gene Alias

PDGF-A, PDGF1

Gene Description

platelet-derived growth factor alpha polypeptide

Omim ID[173430](#)**Gene Ontology**[Hyperlink](#)**Gene Summary**

The protein encoded by this gene is a member of the platelet-derived growth factor family. The four members of this family are mitogenic factors for cells of mesenchymal origin and are characterized by a motif of eight cysteines. This gene product can exist either as a homodimer or as a heterodimer with the platelet-derived growth factor beta polypeptide, where the dimers are connected by disulfide bonds. Studies using knockout mice have shown cellular defects in oligodendrocytes, alveolar smooth muscle cells, and Leydig cells in the testis; knockout mice die either as embryos or shortly after birth. Two splice variants have been identified for this gene. [provided by RefSeq]

Other Designations

PDGF A-chain|platelet-derived growth factor alpha|platelet-derived growth factor alpha chain|platelet-derived growth factor alpha isoform 2 preproprotein

Gene Info — PLCG1

Entrez GeneID[5335](#)

Gene Name	PLCG1
Gene Alias	PLC-II, PLC1, PLC148, PLCgamma1
Gene Description	phospholipase C, gamma 1
Omim ID	172420
Gene Ontology	Hyperlink
Gene Summary	The protein encoded by this gene catalyzes the formation of inositol 1,4,5-trisphosphate and diacylglycerol from phosphatidylinositol 4,5-bisphosphate. This reaction uses calcium as a cofactor and plays an important role in the intracellular transduction of receptor-mediated tyrosine kinase activators. For example, when activated by SRC, the encoded protein causes the Ras guanine nucleotide exchange factor RasGRP1 to translocate to the Golgi, where it activates Ras. Also, this protein has been shown to be a major substrate for heparin-binding growth factor 1 (acidic fibroblast growth factor)-activated tyrosine kinase. Two transcript variants encoding different isoforms have been found for this gene. [provided by RefSeq]
Other Designations	1-phosphatidyl-D-myo-inositol-4,5-bisphosphate 1-phosphatidylinositol-4,5-bisphosphate phosphodiesterase gamma 1 OTTHUMP00000031787 OTTHUMP00000178982 PLC-gamma-1 inositol trisphosphohydrolase monophosphatidylinositol phosphodiesterase phosphatidylinositol

Pathway

- [Calcium signaling pathway](#)
- [Cytokine-cytokine receptor interaction](#)
- [Epithelial cell signaling in Helicobacter pylori infection](#)
- [ErbB signaling pathway](#)
- [Fc epsilon RI signaling pathway](#)
- [Fc gamma R-mediated phagocytosis](#)
- [Focal adhesion](#)
- [Gap junction](#)
- [Glioma](#)
- [Glioma](#)
- [Inositol phosphate metabolism](#)
- [Leukocyte transendothelial migration](#)
- [MAPK signaling pathway](#)

- [Melanoma](#)
- [Metabolic pathways](#)
- [Natural killer cell mediated cytotoxicity](#)
- [Neurotrophin signaling pathway](#)
- [Non-small cell lung cancer](#)
- [Pathways in cancer](#)
- [Pathways in cancer](#)
- [Phosphatidylinositol signaling system](#)
- [Prostate cancer](#)
- [Regulation of actin cytoskeleton](#)
- [T cell receptor signaling pathway](#)
- [VEGF signaling pathway](#)
- [Vibrio cholerae infection](#)

Disease

- [Asthma](#)
- [Bipolar Disorder](#)
- [Cardiovascular Diseases](#)
- [Coronary Artery Disease](#)
- [Diabetes Mellitus](#)
- [Edema](#)
- [Genetic Predisposition to Disease](#)
- [Genetic Predisposition to Disease](#)
- [HIV Infections](#)
- [Kidney Failure](#)
- [Mental Disorders](#)

- [Multiple Sclerosis](#)