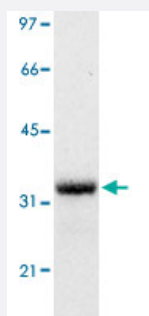


GFP monoclonal antibody

Catalog # MAB8184

Size 100 ug

Applications



Western Blot (Transfected lysate)

Western blot analysis of 293 cells transfected with a GFP construct. Using GFP monoclonal antibody (Cat # MAB8184).

Specification

Product Description	Mouse monoclonal antibody raised against full length recombinant GFP.
Immunogen	Recombinant protein corresponding to full length jellyfish GFP.
Host	Mouse
Reactivity	Jellyfishes
Specificity	This antibody detects GFP and its variants.
Form	Liquid
Recommend Usage	Western Blot (1:1000) Immunoprecipitation (1:200) The optimal working dilution should be determined by the end user.
Storage Buffer	In 20 mM PBS, 0.15 M NaCl, pH 7.2 (0.01% sodium azide)
Storage Instruction	Store at 4°C for three months. For long term storage store at -20°C. Aliquot to avoid repeated freezing and thawing.
Note	This product contains sodium azide: a POISONOUS AND HAZARDOUS SUBSTANCE which should be handled by trained staff only.

Applications

- Western Blot (Transfected lysate)

Western blot analysis of 293 cells transfected with a GFP construct. Using GFP monoclonal antibody (Cat # MAB8184).

- Immunoprecipitation

Publication Reference

- [Transient decrease in F-actin may be necessary for translocation of proteins into dendritic spines.](#)

Ouyang Y, Wong M, Capani F, Rensing N, Lee CS, Liu Q, Neusch C, Martone ME, Wu JY, Yamada K, Ellisman MH, Choi DW.
The European Journal of Neuroscience 2005 Dec; 22(12):2995.

- [Slipping or gripping? Fluorescent speckle microscopy in fish keratocytes reveals two different mechanisms for generating a retrograde flow of actin.](#)

Jurado C, Haserick JR, Lee J.

Molecular Biology of the Cell 2005 Feb; 16(2):507.

- [A novel nuclear protein, MGC5306 interacts with DNA polymerase beta and has a potential role in cellular phenotype.](#)

Wang L, Bhattacharyya N, Chelsea DM, Escobar PF, Banerjee S.

Cancer Research 2004 Nov; 64(21):7673.

Application: IP-WB, Human , HEK 293 cells