

BOLL purified MaxPab rabbit polyclonal antibody (D01P) MaxPab®

Catalog # : H00066037-D01P

規格 : [100 ug]

[List All](#)

Specification

Product Description: Rabbit polyclonal antibody raised against a full-length human BOLL protein.

Immunogen: BOLL (NP_932074.1, 1 a.a. ~ 295 a.a) full-length human protein.

Sequence:
 METESGPQTSNMQMTDSLSPSPNPVSPVPLNNPTSAPRYGTVIPNRIFV
 GGIDFKTNESDLRKFFSQYGSVKEVKIVNDRAGVSKGYGFVTFETQEDA
 QKILQEAELNYKDKKLNIGPAIRKQQVGI PRSSIMPAAGTMYLTTSTGY
 P YTYHNGVAYFHTPEVTSVPPPWPSRSVCSSPVMVAQPIYQQPAYHYQAT
 TQYLPGQWQWSPQPSASSAPFLYLQPSEVIYQPVEIAQDGGCVPPPL
 SLMETSVPEPYSDHGVQATYHQVYAPSAITMPAPVMQPEPIKTVWSIHY

Host: Rabbit

Reactivity: Human, Mouse

Quality Control Testing: Antibody reactive against mammalian transfected lysate.

Storage Buffer: In 1x PBS, pH 7.4

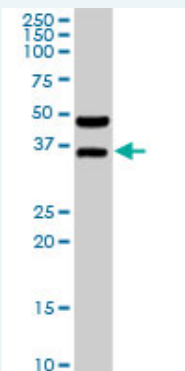
Storage Instruction: Store at -20°C or lower. Aliquot to avoid repeated freezing and thawing.

MSDS: [Download](#)

Datasheet: [Download](#)

Applications

Western Blot (Tissue lysate)



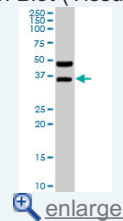
BOLL MaxPab rabbit polyclonal antibody. Western Blot analysis of BOLL expression in mouse testis.

[Protocol Download](#)

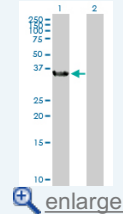
Western Blot (Transfected lysate)

Application Image

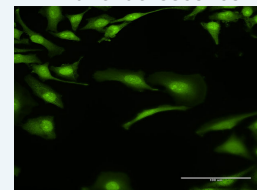
Western Blot (Tissue lysate)

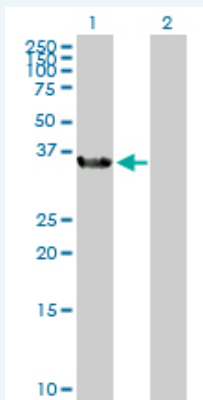


Western Blot (Transfected lysate)



Immunofluorescence



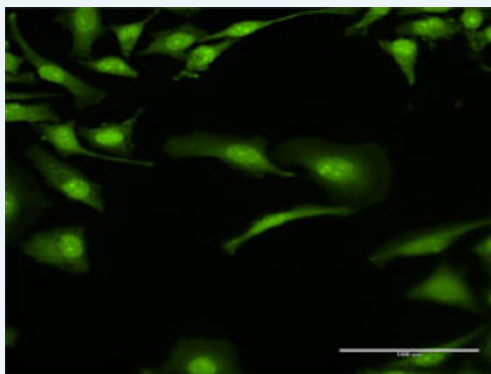


Western Blot analysis of BOLL expression in transfected 293T cell line ([H00066037-T02](#)) by BOLL MaxPab polyclonal antibody.

Lane 1: BOLL transfected lysate(32.60 KDa).
Lane 2: Non-transfected lysate.

Protocol Download

Immunofluorescence



enlarge this image

Immunofluorescence of purified MaxPab antibody to BOLL on HeLa cell. [antibody concentration 30 ug/ml]

Gene Information

Entrez GeneID: [66037](#)

GeneBank [NM_197970.1](#)

Accession#:

Protein [NP_932074.1](#)

Accession#:

Gene Name: BOLL

Gene Alias: -

Gene bol, boule-like (Drosophila)

Description:

Omim ID: [606165](#)

Gene Ontology: [Hyperlink](#)

Gene Summary: This gene belongs to the DAZ gene family required for germ cell development. It encodes an RNA-binding protein which is more similar to Drosophila Boule than to human proteins encoded by genes DAZ (deleted in azoospermia) or DAZL (deleted in azoospermia-like). Loss of this gene function results in the absence of sperm in semen (azoospermia). Histological studies demonstrated that the primary defect is at the meiotic G2/M transition. Two alternatively spliced transcript variants encoding distinct isoforms have been found for this gene. [provided by RefSeq]

Other boule
Designations:

Related Disease

Azoospermia Infertility, Male Oligospermia

[服務條款](#) | [隱私權政策](#) | [著作及商標](#) | [網站地圖](#)

©2020 亞諾法生技股份有限公司 Abnova Corporation. 版權所有.