

ChGn purified MaxPab mouse polyclonal antibody (B01P) MaxPab®

Catalog # : H00055790-B01P

規格 : [50 ug]

[List All](#)

Specification

Product Description: Mouse polyclonal antibody raised against a full-length human ChGn protein.

Immunogen: ChGn (AAH60772, 1 a.a. ~ 297 a.a) full-length human protein.

Sequence:
 MMMVRRGLLAWISRVVLLVLLCCAISVL YMLACTPKGDEEQLALPRAN
 SPTGKEGYQAVLQEWEEQHRNYVSSLKRQIAQLKEELQERSEQLRNGQ
 YQASDAAGLGLDRSPPEKTQADLLAFLHSQVDKAEVNAGVKLATEYAAV
 PFDSFTLQKVYQLETGLTRHPEEKPVKDKRDELVEAIESALETLNNPAE
 NSPNHRPYTASDFIEGIYRTERDKGTLYELTFKGDHKHEFKRLILFRPFGP
 IMKVENEKLNMANTLINVIVPLAKRVDKFRQFMQNFRPADEVFRCVPLSP

Host: Mouse

Reactivity: Human

Quality Control Testing: Antibody reactive against mammalian transfected lysate.

Storage Buffer: In 1x PBS, pH 7.4

Storage Instruction: Store at -20°C or lower. Aliquot to avoid repeated freezing and thawing.

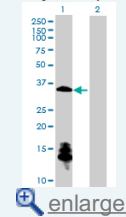
MSDS:  [Download](#)

Interspecies Antigen Sequence: Mouse (86); Rat (85)

Datasheet:  [Download](#)

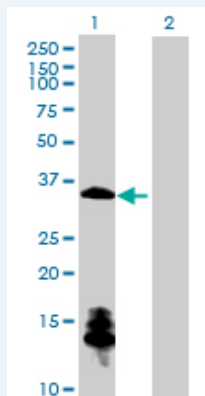
Application Image

Western Blot (Transfected lysate)



Applications

Western Blot (Transfected lysate)



Western Blot analysis of CSGALNACT1 expression in transfected 293T cell line (H00055790-T01) by CSGALNACT1 MaxPab polyclonal antibody.

Lane 1: ChGn transfected lysate(32.78 KDa).

Lane 2: Non-transfected lysate.

 [Protocol Download](#)

Gene Information

Entrez GeneID: [55790](#)

**GeneBank
Accession#:** [BC060772](#)

**Protein
Accession#:** [AAH60772](#)

Gene Name: CSGALNACT1

Gene Alias: CSGaINAcT-1,ChGn,FLJ11264,FLJ13760,beta4GalNAcT

**Gene
Description:** chondroitin sulfate N-acetylgalactosaminyltransferase 1

Gene Ontology: [Hyperlink](#)

**Other
Designations:** OTTHUMP00000161400,chondroitin beta1,4 N-acetylgalactosaminyltransferase

Gene Pathway

[Chondroitin sulfate biosynthesis](#) [Metabolic pathways](#)

Related Disease

[Genetic Predisposition to Disease](#) [Thyroid Neoplasms](#) [Tobacco Use Disorder](#)

[服務條款](#) | [隱私權政策](#) | [著作及商標](#) | [網站地圖](#)

©2021 亞諾法生技股份有限公司 Abnova Corporation. 版權所有.