

GOLM1 monoclonal antibody (M06A), clone 5B10

Catalog # : H00051280-M06A

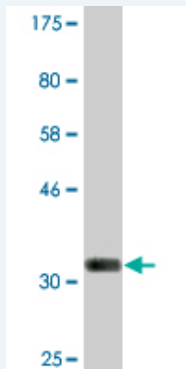
規格 : [200 uL]

[List All](#)

Specification

Product Description:	Mouse monoclonal antibody raised against a partial recombinant GOLM1.
Immunogen:	GOLM1 (NP_057632, 302 a.a. ~ 401 a.a) partial recombinant protein with GST tag. MW of the GST tag alone is 26 KDa.
Sequence:	VQAALSVSQENPEMEGPERDQLVIPDGQEEEQEAAGEGRNQQLRGE DDYNMDENEAESETDKQAALAGNDRNIDVFNVEDQKRDTINLLDQREKR NHTL
Host:	Mouse
Reactivity:	Human
Isotype:	IgG1 Kappa

Quality Control Testing: Antibody Reactive Against Recombinant Protein.



Western Blot detection against Immunogen (36.74 KDa) .

Storage Buffer: In ascites fluid

Storage Instruction: Store at -20°C or lower. Aliquot to avoid repeated freezing and thawing.

MSDS: [Download](#)

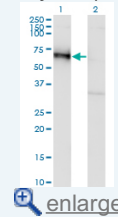
Datasheet: [Download](#)

Applications

Western Blot (Transfected lysate)

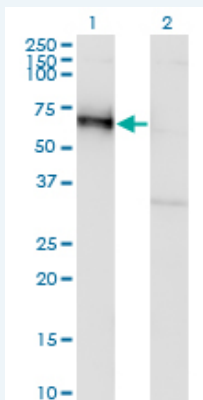
Application Image

Western Blot (Transfected lysate)




Western Blot (Recombinant protein)

ELISA



Western Blot analysis of GOLM1 expression in transfected 293T cell line by GOLM1 monoclonal antibody (M06A), clone 5B10.

Lane 1: GOLM1 transfected lysate(45.3 KDa).
Lane 2: Non-transfected lysate.

 [Protocol Download](#)

Western Blot (Recombinant protein)

 [Protocol Download](#)

ELISA

Gene Information

Entrez GeneID: [51280](#)

GeneBank Accession#: [NM_016548](#)

Protein Accession#: [NP_057632](#)

Gene Name: GOLM1

Gene Alias: C9orf155,FLJ22634,FLJ23608,GOLPH2,GP73,PSEC0257,bA379P1.3

Gene Description: golgi membrane protein 1

Omim ID: [606804](#)

Gene Ontology: [Hyperlink](#)

Gene Summary: The Golgi complex plays a key role in the sorting and modification of proteins exported from the endoplasmic reticulum. The protein encoded by this gene is a type II Golgi transmembrane protein. It processes proteins synthesized in the rough endoplasmic reticulum and assists in the transport of protein cargo through the Golgi apparatus. The expression of this gene has been observed to be upregulated in response to viral infection. Alternatively spliced transcript variants encoding the same protein have been described for this gene. [provided by RefSeq]

Other Designations: OTTHUMP00000021587,golgi membrane protein GP73,golgi phosphoprotein 2,golgi protein, 73-kD

Related Disease

[Alzheimer Disease](#) [Alzheimer disease](#) [Cognition](#) [Genetic Predisposition to Disease](#)
[Tobacco Use Disorder](#)

