

SERPINA10 monoclonal antibody (M02), clone 1E11

Catalog # : H00051156-M02

規格 : [100 ug]

[List All](#)

Specification

Product Description: Mouse monoclonal antibody raised against a full length recombinant SERPINA10.

Immunogen: SERPINA10 (AAH22261, 22 a.a. ~ 444 a.a) full-length recombinant protein with GST tag. MW of the GST tag alone is 26 KDa.

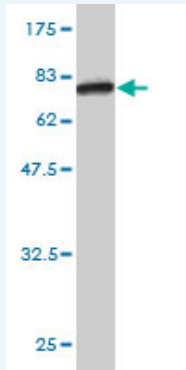
Sequence:
 LAPSPQSPETPAPQNQTSRVVQAPKEEEEDEQEASEEKASEEEKAWLM
 ASRQQ LAKETS NFGF SLLR KISM RHDGNM VFSPF GMSLAM TGLMLGAT
 GPTETQIKRGLHLQALKPTKPGLLPSLFKGLRETL SRNLELGLTQGSFAF
 IHKDFDVKETF FNLSKRYFDTECVPMNFRNASQAKRLMNHYINKETRGKI
 PKLFDEINPETKLILVDYILFKGKWLTPFDVPFTEVDTFHLDKYKTIKVPMM
 YGAGKFASTFDKNFRCHVLKLPYQGNATMLVLMKMGDHLALEDYLT
 TDLVETWLRNMKTRNMEVFFPKFKLDQKYEMHELLRQMGIRRIFFSPFAD
 LSELSATGRNLQVSRVLQRTVIEVDERGTEAVAGILSEITAYSMPPVIKVD
 RPFHFMIYEETSGMLLFLGRVVNPTLL

Host: Mouse

Reactivity: Human

Isotype: IgG2a Kappa

Quality Control Testing: Antibody Reactive Against Recombinant Protein.



Western Blot detection against Immunogen (72.27 KDa) .

Storage Buffer: In 1x PBS, pH 7.4

Storage Instruction: Store at -20°C or lower. Aliquot to avoid repeated freezing and thawing.

MSDS: [Download](#)

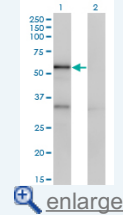
Interspecies Antigen Sequence: Mouse (71); Rat (72)

Datasheet: [Download](#)

Applications

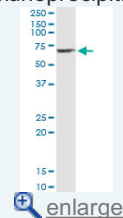
Application Image

Western Blot (Transfected lysate)

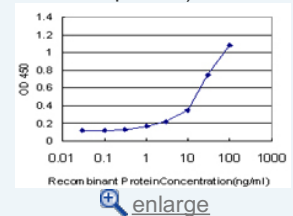


Western Blot (Recombinant protein)

Immunoprecipitation

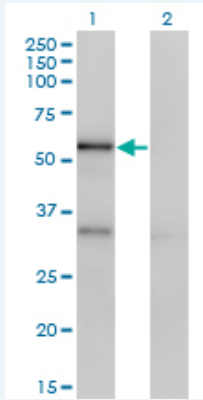


Sandwich ELISA (Recombinant protein)



ELISA

Western Blot (Transfected lysate)



Western Blot analysis of SERPINA10 expression in transfected 293T cell line by SERPINA10 monoclonal antibody (M02), clone 1E11.

Lane 1: SERPINA10 transfected lysate(50.7 kDa).

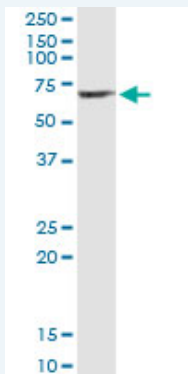
Lane 2: Non-transfected lysate.

[Protocol Download](#)

Western Blot (Recombinant protein)

[Protocol Download](#)

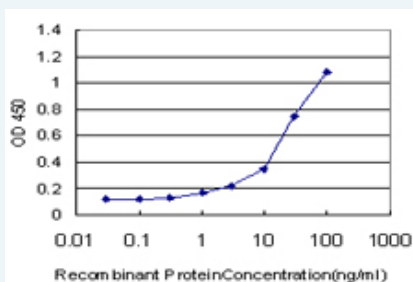
Immunoprecipitation



Immunoprecipitation of SERPINA10 transfected lysate using anti-SERPINA10 monoclonal antibody and Protein A Magnetic Bead, and immunoblotted with SERPINA10 MaxPab rabbit polyclonal antibody.

[Protocol Download](#)

Sandwich ELISA (Recombinant protein)



Detection limit for recombinant GST tagged SERPINA10 is approximately 3ng/ml as a capture antibody.

[Protocol Download](#)

ELISA

Gene Information

Entrez GeneID: [51156](#)

GeneBank [BC022261](#)

Accession#:

Protein [AAH22261](#)

Accession#:

Gene Name: SERPINA10

Gene Alias: PZI,ZPI

Gene Description: serpin peptidase inhibitor, clade A (alpha-1 antiproteinase, antitrypsin), member 10

Omim ID: [605271](#)

Gene Ontology: [Hyperlink](#)

Other Designations: protein Z-dependent protease inhibitor,protein Z-dependent protease inhibitorprecursor,serine (or cysteine) proteinase inhibitor, clade A (alpha-1 antiproteinase, antitrypsin), member 10

Related Disease

[Cardiovascular Diseases](#) [Diabetes Mellitus, Type 2](#) [Edema](#)

[Genetic Predisposition to Disease](#) [Thromboembolism](#) [Venous Thrombosis](#)

[服務條款](#) | [隱私權政策](#) | [著作及商標](#) | [網站地圖](#)

©2021 亞諾法生技股份有限公司 Abnova Corporation. 版權所有.