

STMN2 monoclonal antibody (M23), clone 1A7

Catalog # : H00011075-M23

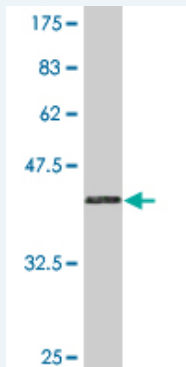
規格 : [50 ug]

[List All](#)

Specification

Product Description:	Mouse monoclonal antibody raised against a full-length recombinant STMN2.
Immunogen:	STMN2 (AAH06302.1, 1 a.a. ~ 179 a.a) full-length recombinant protein with GST tag. MW of the GST tag alone is 26 KDa.
Sequence:	MAKTAMAYKEKMKELSMLSLICSCFYPEPRNINIYTYDDMEVKQINKRASG QAFELILKPPSPISEAPRTLASPKKKDLSEELIQQKLEAAEERRKSQEAQV LKQLAEKREHEREVLQKALEENNF SKMAEEKLILKMEQIKENREANLAAI ERLQEKERHAAEVRRNKELQVELSG
Host:	Mouse
Reactivity:	Human
Isotype:	IgG2b Kappa

Quality Control Testing: Antibody Reactive Against Recombinant Protein.



Western Blot detection against Immunogen (45.43 KDa) .

Storage Buffer: In 1x PBS, pH 7.4

Storage Instruction: Store at -20°C or lower. Aliquot to avoid repeated freezing and thawing.

MSDS: [Download](#)

Datasheet: [Download](#)

Applications

Western Blot (Recombinant protein)

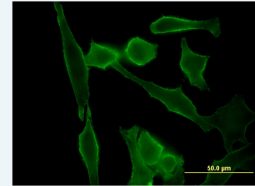
[Protocol Download](#)

Immunofluorescence

Application Image

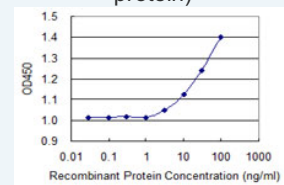
Western Blot (Recombinant protein)

Immunofluorescence



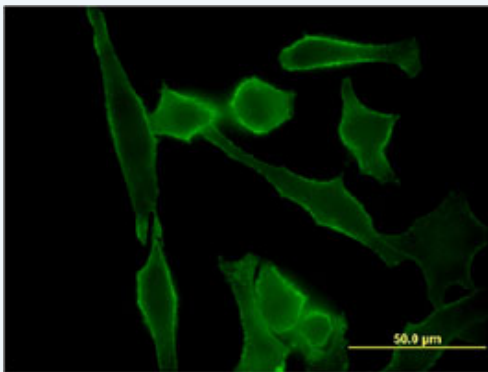
[enlarge](#)

Sandwich ELISA (Recombinant protein)



[enlarge](#)

ELISA

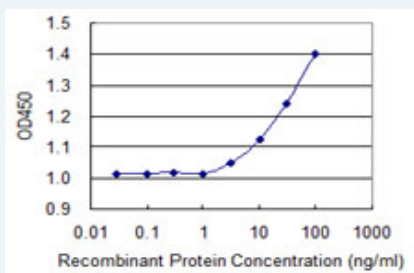


[enlarge this image](#)

Immunofluorescence of monoclonal antibody to STMN2 on HeLa cell . [antibody concentration 10 ug/ml]

[Protocol Download](#)

Sandwich ELISA (Recombinant protein)



Detection limit for recombinant GST tagged STMN2 is 1 ng/ml as a capture antibody.

[Protocol Download](#)

ELISA

Gene Information

Entrez GeneID: [11075](#)

GeneBank Accession#: [BC006302](#)

Protein Accession#: [AAH06302.1](#)

Gene Name: STMN2

Gene Alias: SCG10,SCGN10,SGC10

Gene Description: stathmin-like 2

Omim ID: [600621](#)

Gene Ontology: [Hyperlink](#)

Gene Summary: Superior cervical ganglion-10 is a neuronal growth-associated protein that shares significant amino acid sequence similarity with the phosphoprotein stathmin (MIM 151442).[supplied by OMIM]

Other Designations: neuronal growth-associated protein (silencer element),superior cervical ganglia, neural specific 10,superiorcervical ganglia, neural specific 10