

NR1D2 monoclonal antibody (M01), clone 1G2

Catalog # : H00009975-M01

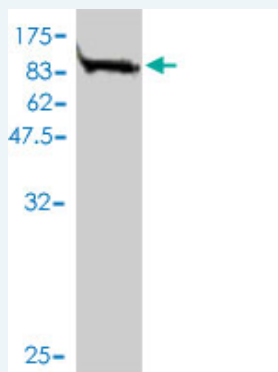
規格 : [100 ug]

[List All](#)

Specification

Product Description:	Mouse monoclonal antibody raised against a full length recombinant NR1D2.
Immunogen:	NR1D2 (AAH45613, 1 a.a. ~ 579 a.a) full-length recombinant protein with GST tag. MW of the GST tag alone is 26 KDa.
Sequence:	MEVNAGGVVIAYISSSSSASSHASCHSEGSSENSFQSSSSVPPSPNSSNSD TNGNPKNGDLANIEGILKNDRIDCSMKT SKSSAPGMTKSHSGVTKFSGMV LLCKVCGDVASGFHYGVHACEGCKGFFRRSIQNIQYKKCLKNENC SIM RMNRRNCQQCRFKKCLSVGMSRDAVRFGRIPKREKQRMLIEMQSAMKT MMNSQFSGHLQNDTLVEHHEQTALPAQEQLRPKPQLEQENIKSSSPPSS DFAKEEVIGMVTTRAHKDTFMYNQEQQENSAESMQPKRGERIRKNMEQY NLNHDHCGNGLSSHPCSESQQHLNGQFKGRNIMHYPNGHAICIANGH MNFSAAYTQRVCDRVPIDGFSQENENKNSYLCNTGGRMHLVCPMSKSPY VDPHKS GHEWEEF SMSFT PAVKEVVEFAKRIPGFRDLSQHDQVNLKA GTFEVL MVRFASLFD AKERTVTFLSGKKYSVDDLHSMGAGDLLNSMFE FSEKLNALQLSDEEMSLFTAVVLVSADRSGIENVSVEALQETLIRALRTL MKNHPNEASIFTKLLLKLPDLRSLNNMHSEELLAFKVHP
Host:	Mouse
Reactivity:	Human
Isotype:	IgG1 kappa

Quality Control Testing: Antibody Reactive Against Recombinant Protein.



Western Blot detection against Immunogen (89.21 KDa) .

Storage Buffer: In 1x PBS, pH 7.4

Storage Instruction: Store at -20°C or lower. Aliquot to avoid repeated freezing and thawing.

MSDS: [Download](#)

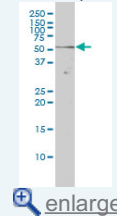
Datasheet: [Download](#)

Applications

Western Blot (Cell lysate)

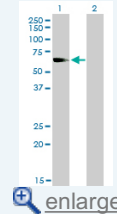
Application Image

Western Blot (Cell lysate)



[enlarge](#)

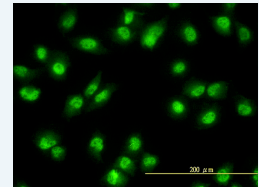
Western Blot (Transfected lysate)



[enlarge](#)

Western Blot (Recombinant protein)

Immunofluorescence

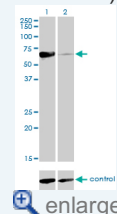


[enlarge](#)

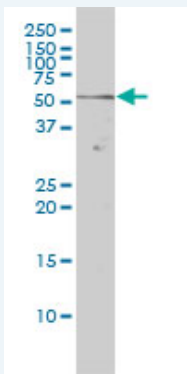
Sandwich ELISA (Recombinant protein)

ELISA

RNAi Knockdown (Antibody validated)



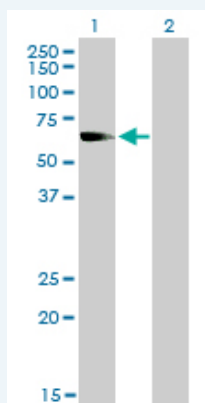
[enlarge](#)



NR1D2 monoclonal antibody (M01), clone 1G2 Western Blot analysis of NR1D2 expression in HeLa (Cat # L013V1).

[Protocol Download](#)

Western Blot (Transfected lysate)



Western Blot analysis of NR1D2 expression in transfected 293T cell line by NR1D2 monoclonal antibody (M01), clone 1G2.

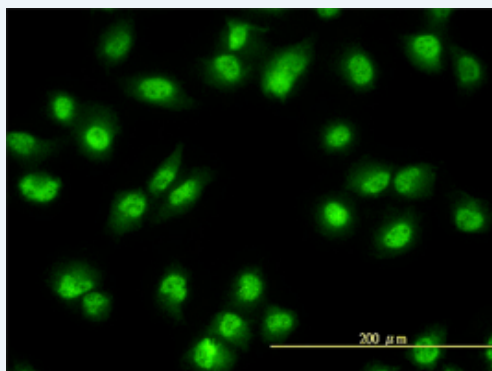
Lane 1: NR1D2 transfected lysate(64.7 KDa).
Lane 2: Non-transfected lysate.

[Protocol Download](#)

Western Blot (Recombinant protein)

[Protocol Download](#)

Immunofluorescence



[enlarge this image](#)

Immunofluorescence of monoclonal antibody to NR1D2 on HeLa cell. [antibody concentration 10 ug/ml]

[Protocol Download](#)

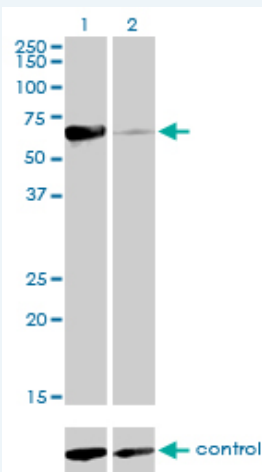
Sandwich ELISA (Recombinant protein)

Detection limit for recombinant GST tagged NR1D2 is approximately 0.03ng/ml as a capture antibody.

[Protocol Download](#)

ELISA

RNAi Knockdown (Antibody validated)



Western blot analysis of NR1D2 over-expressed 293 cell line, cotransfected with NR1D2 Validated Chimera RNAi (Cat # H00009975-R01V) (Lane 2) or non-transfected control (Lane 1). Blot probed with NR1D2 monoclonal antibody (M01), clone 1G2 (Cat # H00009975-M01). GAPDH (36.1 kDa) used as specificity and loading control.

 [Protocol Download](#)

Gene Information

Entrez GeneID: [9975](#)

GeneBank [BC045613](#)

Accession#:

Protein [AAH45613](#)

Accession#:

Gene Name: NR1D2

Gene Alias: BD73,EAR-1r,HZF2,Hs.37288,RVR

Gene Description: nuclear receptor subfamily 1, group D, member 2

Omim ID: [602304](#)

Gene Ontology: [Hyperlink](#)

Gene Summary: This gene encodes a member of the nuclear hormone receptor family, specifically the NR1 subfamily of receptors. The encoded protein functions as a transcriptional repressor and may play a role in circadian rhythms and carbohydrate and lipid metabolism. Alternatively spliced transcript variants have been described. [provided by RefSeq]

Other Designations: Rev-erb-beta