

## PGGT1B monoclonal antibody (M02), clone 5E4

Catalog # : H00005229-M02

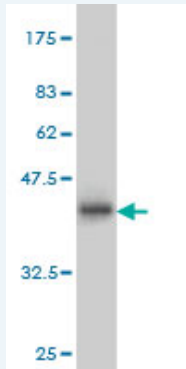
規格 : [ 100 ug ]

[List All](#)

### Specification

<b>Product Description:</b>	Mouse monoclonal antibody raised against a partial recombinant PGGT1B.
<b>Immunogen:</b>	PGGT1B (NP_005014, 1 a.a. ~ 105 a.a) partial recombinant protein with GST tag. MW of the GST tag alone is 26 KDa.
<b>Sequence:</b>	MVATEDERLAGSGEGERLDFLRDRHVRFFQRCLQVLPERYSSLETSSLTIAFFALSGLDMLDSL DVNKKDIIIEWIYSLQVLPTEDRSNLNRCGFRGSS YLGIPF
<b>Host:</b>	Mouse
<b>Reactivity:</b>	Human, Rat
<b>Isotype:</b>	IgG2a Kappa

**Quality Control Testing:** Antibody Reactive Against Recombinant Protein.



Western Blot detection against Immunogen (37.29 KDa) .

**Storage Buffer:** In 1x PBS, pH 7.4

**Storage Instruction:** Store at -20°C or lower. Aliquot to avoid repeated freezing and thawing.

**MSDS:** [Download](#)

**Datasheet:** [Download](#)

### Publication Reference

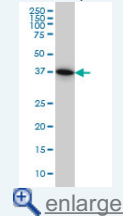
1. [Genetic studies on the functional relevance of the protein prenyltransferases in skin keratinocytes.](#)  
Lee R, Chang SY, Trinh H, Tu Y, White AC, Davies BS, Bergo MO, Fong LG, Lowry WE, Young SG. Hum Mol Genet. 2010 Feb 11. [Epub ahead of print]

### Applications

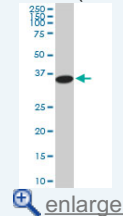
**Western Blot (Cell lysate)**

### Application Image

Western Blot (Cell lysate)

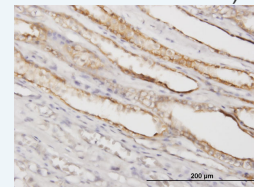


Western Blot (Cell lysate)

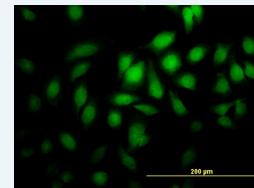


Western Blot (Recombinant protein)

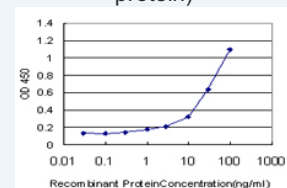
Immunohistochemistry (Formalin/PFA-fixed paraffin-embedded sections)



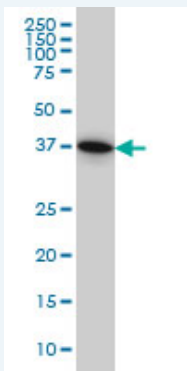
Immunofluorescence




Sandwich ELISA (Recombinant protein)



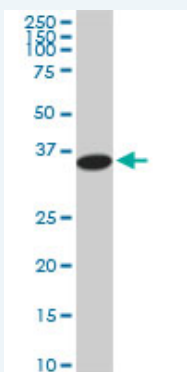
ELISA



PGGT1B monoclonal antibody (M02), clone 5E4 Western Blot analysis of PGGT1B expression in HeLa ( Cat # L013V1 ).

 [Protocol Download](#)

#### Western Blot (Cell lysate)



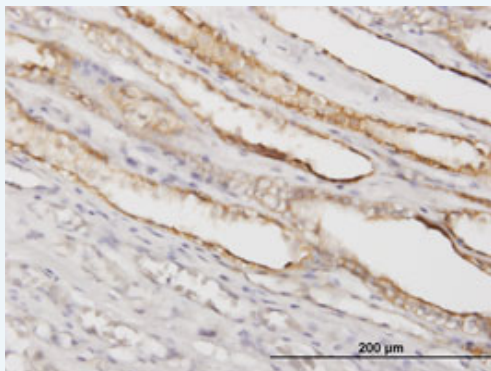
PGGT1B monoclonal antibody (M02), clone 5E4. Western Blot analysis of PGGT1B expression in PC-12 ( Cat # L012V1 ).


 [Protocol Download](#)

#### Western Blot (Recombinant protein)


 [Protocol Download](#)

#### Immunohistochemistry (Formalin/PFA-fixed paraffin-embedded sections)

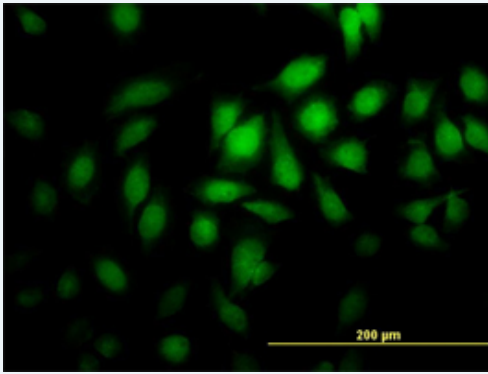


 [enlarge this image](#)

Immunoperoxidase of monoclonal antibody to PGGT1B on formalin-fixed paraffin-embedded human kidney. [antibody concentration 1.2 ug/ml]

 [Protocol Download](#)

#### Immunofluorescence

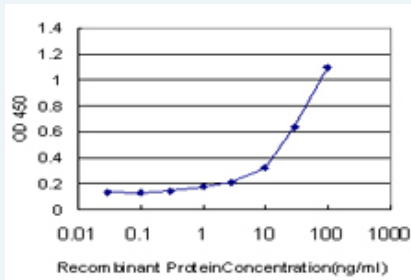


[enlarge this image](#)

Immunofluorescence of monoclonal antibody to PGGT1B on HeLa cell. [antibody concentration 10 ug/ml]

[Protocol Download](#)

### Sandwich ELISA (Recombinant protein)



Detection limit for recombinant GST tagged PGGT1B is approximately 1ng/ml as a capture antibody.

[Protocol Download](#)

### ELISA

### Gene Information

Entrez GeneID: [5229](#)

GeneBank Accession#: [NM\\_005023](#)

Protein Accession#: [NP\\_005014](#)

Gene Name: PGGT1B

Gene Alias: BGGI,GGTI

Gene Description: protein geranylgeranyltransferase type I, beta subunit

Omim ID: [602031](#)

Gene Ontology: [Hyperlink](#)

Other Designations: geranylgeranyltransferase type I beta subunit

### Related Disease

[Multiple Sclerosis, Relapsing-Remitting](#)

