

## MSX1 monoclonal antibody (M11), clone 1E2

Catalog # : H00004487-M11

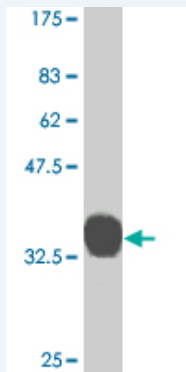
規格 : [ 100 ug ]

[List All](#)

### Specification

<b>Product Description:</b>	Mouse monoclonal antibody raised against a partial recombinant MSX1.
<b>Immunogen:</b>	MSX1 (NP_002439, 216 a.a. ~ 297 a.a) partial recombinant protein with GST tag. MW of the GST tag alone is 26 KDa.
<b>Sequence:</b>	NRRAKAKRLQEAELEKLMMAAKPMLPPAAFGLSFPLGGPAAVAAAAGAS LYGASGPFQRAALPVAPVGLYTAHVGYSMYHLT
<b>Host:</b>	Mouse
<b>Reactivity:</b>	Human, Mouse
<b>Isotype:</b>	IgG2a Kappa

**Quality Control Testing:** Antibody Reactive Against Recombinant Protein.



Western Blot detection against Immunogen (35.02 KDa) .

**Storage Buffer:** In 1x PBS, pH 7.4

**Storage Instruction:** Store at -20°C or lower. Aliquot to avoid repeated freezing and thawing.

**MSDS:** [Download](#)

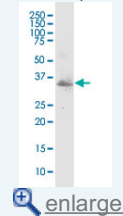
**Datasheet:** [Download](#)

### Applications

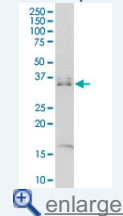
Western Blot (Cell lysate)

### Application Image

Western Blot (Cell lysate)

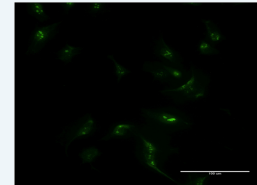


Western Blot (Cell lysate)

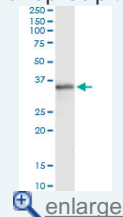


Western Blot (Recombinant protein)

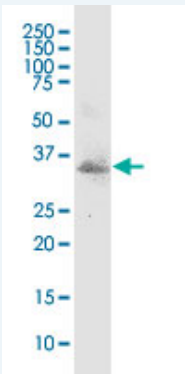
Immunofluorescence



Immunoprecipitation



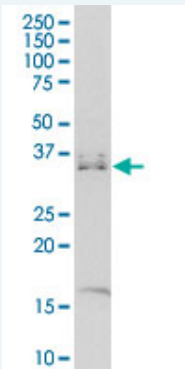
ELISA



MSX1 monoclonal antibody (M11), clone 1E2. Western Blot analysis of MSX1 expression in U-2 OS.

 [Protocol Download](#)

#### Western Blot (Cell lysate)



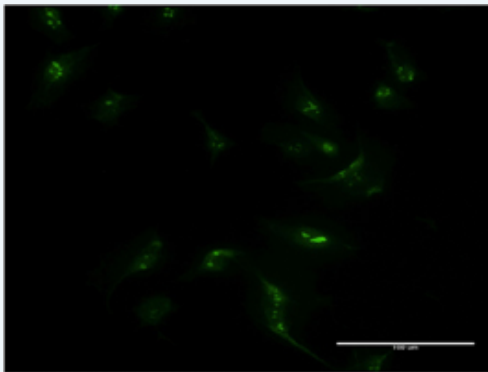
MSX1 monoclonal antibody (M11), clone 1E2. Western Blot analysis of MSX1 expression in Raw 264.7.


 [Protocol Download](#)

#### Western Blot (Recombinant protein)

 [Protocol Download](#)

#### Immunofluorescence

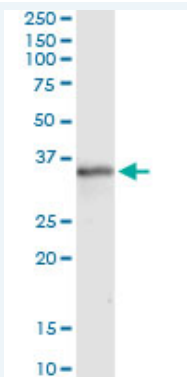


 [enlarge this image](#)


Immunofluorescence of monoclonal antibody to MSX1 on HeLa cell . [antibody concentration 10 ug/ml]

 [Protocol Download](#)

#### Immunoprecipitation



Immunoprecipitation of MSX1 transfected lysate using anti-MSX1 monoclonal antibody and Protein A Magnetic Bead (U0007), and immunoblotted with MSX1 MaxPab rabbit polyclonal antibody.

 [Protocol Download](#)

## ELISA

## Gene Information

**Entrez GeneID:** [4487](#)

**GeneBank Accession#:** [NM\\_002448](#)

**Protein Accession#:** [NP\\_002439](#)

**Gene Name:** MSX1

**Gene Alias:** HOX7, HYD1

**Gene Description:** msh homeobox 1

**Omim ID:** [106600](#), [142983](#), [189500](#), [608874](#)

**Gene Ontology:** [Hyperlink](#)

**Gene Summary:** This gene encodes a member of the muscle segment homeobox gene family. The encoded protein functions as a transcriptional repressor during embryogenesis through interactions with components of the core transcription complex and other homeoproteins. It may also have roles in limb-pattern formation, craniofacial development, particularly odontogenesis, and tumor growth inhibition. Mutations in this gene, which was once known as homeobox 7, have been associated with nonsyndromic cleft lip with or without cleft palate 5, Witkop syndrome, Wolf-Hirschorn syndrome, and autosomal dominant hypodontia. [provided by RefSeq]

**Other Designations:** OTTHUMP00000115387, homeobox 7, msh homeobox 1, msh homeobox homolog 1

## Related Disease

[Breast Neoplasms](#) [Cleft Lip](#) [Cleft Palate](#) [Disease Models, Animal](#)  
[Genetic Predisposition to Disease](#) [Multiple System Atrophy](#) [Parkinson Disease](#)  
[Parkinson disease](#) [Sleep Apnea, Obstructive](#)