

# MSX1 purified MaxPab rabbit polyclonal antibody (D01P) MaxPab®

Catalog # : H00004487-D01P

規格 : [ 100 ug ]

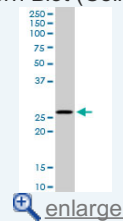
[List All](#)

## Specification

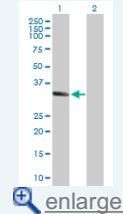
<b>Product Description:</b>	Rabbit polyclonal antibody raised against a full-length human MSX1 protein.
<b>Immunogen:</b>	MSX1 (AAH67353.1, 1 a.a. ~ 297 a.a) full-length human protein.
<b>Sequence:</b>	MTSLPLGVKVEDSAFGKPAAGGGAGQAPSAAAATAAMGADEEGAKPK VSPDLLPFVSEALMADHRKPGAKESALAPSEGVQAAGGSAQPLGVPPG SLGAPDAPSSPRPLGHF SVGGLLKLPEDALVKAESPEKPERTPWMQSP RFSPPPARRLSPPACTLRKHKTNRKPRTPTTAAQLLALERKFRQKQYLSI AERAEFSSSLTETQVKIWFQNRRAKAKRLQEAELEKLMMAAKPMLPP AAFGLSFPLGGPAAVAAAAGASLYGASGPFQRAALPVAPVGLYTAHVG YSMYHLT
<b>Host:</b>	Rabbit
<b>Reactivity:</b>	Human
<b>Quality Control Testing:</b>	Antibody reactive against mammalian transfected lysate.
<b>Storage Buffer:</b>	In 1x PBS, pH 7.4
<b>Storage Instruction:</b>	Store at -20°C or lower. Aliquot to avoid repeated freezing and thawing.
<b>MSDS:</b>	<a href="#">Download</a>
<b>Datasheet:</b>	<a href="#">Download</a>

## Application Image

Western Blot (Cell lysate)

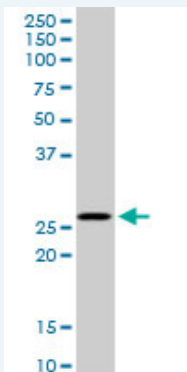


Western Blot (Transfected lysate)



## Applications

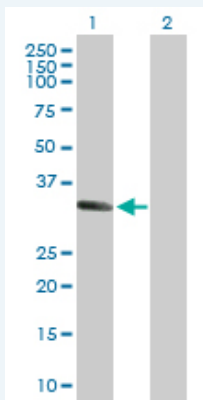
### Western Blot (Cell lysate)



MSX1 MaxPab rabbit polyclonal antibody. Western Blot analysis of MSX1 expression in Jurkat.

[Protocol Download](#)

### Western Blot (Transfected lysate)



Western Blot analysis of MSX1 expression in transfected 293T cell line ([H00004487-T01](#)) by MSX1 MaxPab polyclonal antibody.

Lane 1: MSX1 transfected lysate(30.90 KDa).

Lane 2: Non-transfected lysate.

 [Protocol Download](#)

## Gene Information

**Entrez GeneID:** [4487](#)

**GeneBank** [NM\\_002448.2](#)

**Accession#:**

**Protein** [AAH67353.1](#)

**Accession#:**

**Gene Name:** MSX1

**Gene Alias:** HOX7, HYD1

**Gene** msh homeobox 1

**Description:**

**Omim ID:** [106600](#), [142983](#), [189500](#), [608874](#)

**Gene Ontology:** [Hyperlink](#)

**Gene Summary:** This gene encodes a member of the muscle segment homeobox gene family. The encoded protein functions as a transcriptional repressor during embryogenesis through interactions with components of the core transcription complex and other homeoproteins. It may also have roles in limb-pattern formation, craniofacial development, particularly odontogenesis, and tumor growth inhibition. Mutations in this gene, which was once known as homeobox 7, have been associated with nonsyndromic cleft lip with or without cleft palate 5, Witkop syndrome, Wolf-Hirschorn syndrome, and autosomal dominant hypodontia. [provided by RefSeq]

**Other Designations:** OTTHUMP00000115387, homeobox 7, msh homeobox 1, msh homeobox homolog 1

## Related Disease

[Breast Neoplasms](#) [Cleft Lip](#) [Cleft Palate Disease Models, Animal](#)  
[Genetic Predisposition to Disease](#) [Multiple System Atrophy](#) [Parkinson Disease](#)  
[Parkinson disease](#) [Sleep Apnea](#), [Obstructive](#)