

GRM5 monoclonal antibody (M01), clone 1B3

Catalog # : H00002915-M01

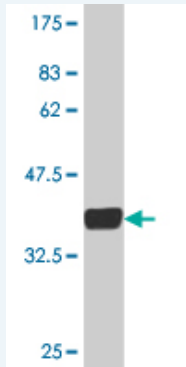
規格 : [100 ug]

[List All](#)

Specification

Product Description:	Mouse monoclonal antibody raised against a partial recombinant GRM5.
Immunogen:	GRM5 (NP_000833, 419 a.a. ~ 518 a.a) partial recombinant protein with GST tag. MW of the GST tag alone is 26 KDa.
Sequence:	CPGYAGLCDAMKPIDGRKLLLESLMKTNFTGVSGDTILFDENGDSPGRYE IMNFKEMGKDYFDYINVGSWDNGELKMDDDEVWSKKSNIIRSVCSPECK G
Host:	Mouse
Reactivity:	Human
Isotype:	IgG2a Kappa

Quality Control Testing: Antibody Reactive Against Recombinant Protein.



Western Blot detection against Immunogen (36.74 KDa) .

Storage Buffer: In 1x PBS, pH 7.4

Storage Instruction: Store at -20°C or lower. Aliquot to avoid repeated freezing and thawing.

MSDS: [Download](#)

Datasheet: [Download](#)

Applications

Western Blot (Recombinant protein)

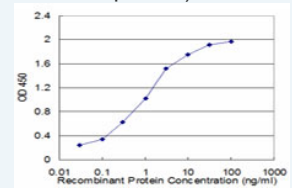
[Protocol Download](#)

Sandwich ELISA (Recombinant protein)

Application Image

Western Blot (Recombinant protein)

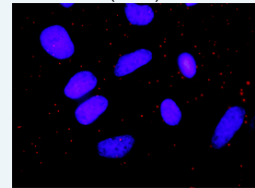
Sandwich ELISA (Recombinant protein)



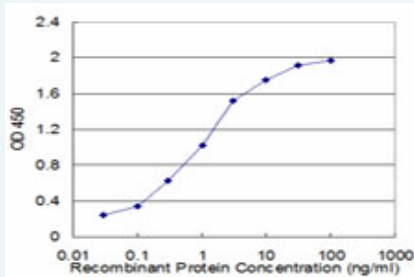
[enlarge](#)

ELISA

In situ Proximity Ligation Assay (Cell)



[enlarge](#)

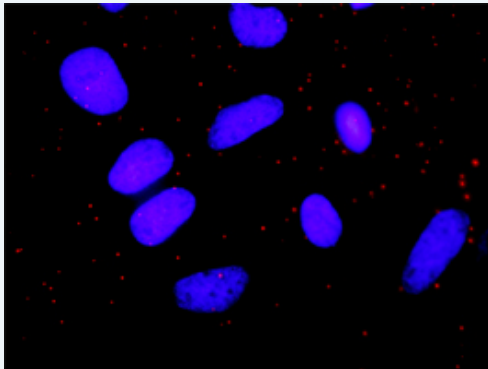


Detection limit for recombinant GST tagged GRM5 is approximately 0.03ng/ml as a capture antibody.

 [Protocol Download](#)

ELISA

In situ Proximity Ligation Assay (Cell)



Proximity Ligation Analysis of protein-protein interactions between PRKCD and GRM5. HeLa cells were stained with anti-PRKCD rabbit purified polyclonal 1:1200 and anti-GRM5 mouse monoclonal antibody 1:50. Each red dot represents the detection of protein-protein interaction complex, and nuclei were counterstained with DAPI (blue).

Gene Information

Entrez GeneID: [2915](#)

GeneBank Accession#: [NM_000842](#)

Protein Accession#: [NP_000833](#)

Gene Name: GRM5

Gene Alias: GPRC1E,MGLUR5,mGlu5

Gene Description: glutamate receptor, metabotropic 5

Omim ID: [604102](#)

Gene Ontology: [Hyperlink](#)

Gene Summary: L-glutamate is the major excitatory neurotransmitter in the central nervous system and activates both ionotropic and metabotropic glutamate receptors. Glutamatergic neurotransmission is involved in most aspects of normal brain function and can be perturbed in many neuropathologic conditions. The metabotropic glutamate receptors are a family of G protein-coupled receptors, that have been divided into 3 groups on the basis of sequence homology, putative signal transduction mechanisms, and pharmacologic properties. Group I includes GRM1 and GRM5 and these receptors have been shown to activate phospholipase C. Group II includes GRM2 and GRM3 while Group III includes GRM4, GRM6, GRM7 and GRM8. Group II and III receptors are linked to the inhibition of the cyclic AMP cascade but differ in their

agonist selectivities. Multiple transcript variants encoding different isoforms have been found for this gene. [provided by RefSeq]

Other Designations: -

Gene Pathway

[Calcium signaling pathway](#) [Gap junction](#) [Huntington's disease](#) [Long-term depression](#)
[Long-term potentiation](#) [Neuroactive ligand-receptor interaction](#)

Related Disease

[Alcoholism](#) [Anorexia Nervosa](#) [Bulimia](#) [Cardiovascular Diseases](#) [Cognition](#)
[Diabetes Mellitus, Type 2](#) [Edema](#) [Genetic Predisposition to Disease](#) [Mental Disorders](#)
[Schizophrenia](#) [Schizophrenia](#) [Schizophrenic Psychology](#) [Tobacco Use Disorder](#)
[Weight Gain](#)

[服務條款](#) | [隱私權政策](#) | [著作及商標](#) | [網站地圖](#)

©2016 亞諾法生技股份有限公司 Abnova Corporation. 版權所有.