

## NKX2-5 monoclonal antibody (M04), clone 3C1

Catalog # : H00001482-M04

規格 : [ 100 ug ]

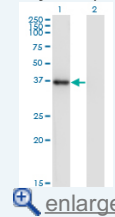
[List All](#)

### Specification

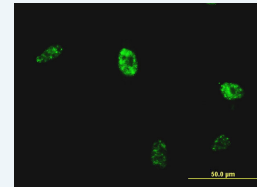
<b>Product Description:</b>	Mouse monoclonal antibody raised against a full length recombinant NKX2-5.
<b>Immunogen:</b>	NKX2-5 (NP_004378, 1 a.a. ~ 130 a.a) full length recombinant protein with GST tag. MW of the GST tag alone is 26 KDa.
<b>Sequence:</b>	MFPSPALTPFPFSVKDILNLEQQQRSLAAAGEL SARLEATLAPSSCMLAA FKPEAYAGPEAAAPGLPELRAELGRAPSPAKCASAFPAPAFYPRAYS DPAKDPRAEKKELCALQKAVELEKTEADNA*
<b>Host:</b>	Mouse
<b>Reactivity:</b>	Human
<b>Isotype:</b>	IgG2a Kappa
<b>Quality Control Testing:</b>	Antibody Reactive Against Recombinant Protein.
<b>Storage Buffer:</b>	In 1x PBS, pH 7.4
<b>Storage Instruction:</b>	Store at -20°C or lower. Aliquot to avoid repeated freezing and thawing.
<b>MSDS:</b>	<a href="#">Download</a>
<b>Datasheet:</b>	<a href="#">Download</a>

### Application Image

Western Blot (Transfected lysate)

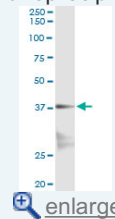


Immunofluorescence



[enlarge](#)

Immunoprecipitation

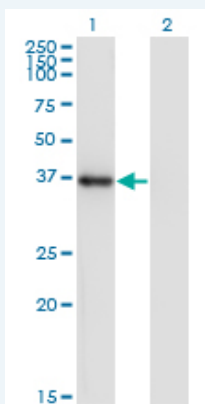


[enlarge](#)

ELISA

### Applications

#### Western Blot (Transfected lysate)



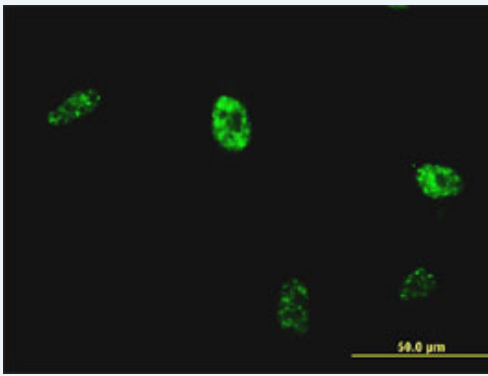
Western Blot analysis of NKX2-5 expression in transfected 293T cell line by NKX2-5 monoclonal antibody (M04), clone 3C1.

Lane 1: NKX2-5 transfected lysate(34.9 KDa).

Lane 2: Non-transfected lysate.

[Protocol Download](#)

#### Immunofluorescence

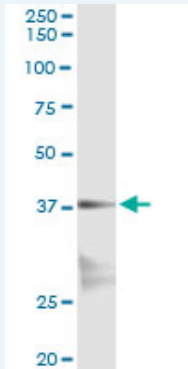


[enlarge this image](#)

Immunofluorescence of monoclonal antibody to NKX2-5 on HeLa cell . [antibody concentration 15 ug/ml]

[Protocol Download](#)

### Immunoprecipitation



Immunoprecipitation of NKX2-5 transfected lysate using anti-NKX2-5 monoclonal antibody and Protein A Magnetic Bead ([U0007](#)), and immunoblotted with NKX2-5 MaxPab rabbit polyclonal antibody.

[Protocol Download](#)

### ELISA

### Gene Information

Entrez GeneID: [1482](#)

GeneBank Accession#: [NM\\_004387](#)

Protein Accession#: [NP\\_004378](#)

Gene Name: NKX2-5

Gene Alias: CHNG5, CSX, CSX1, NKX2.5, NKX2E, NKX4-1

Gene Description: NK2 transcription factor related, locus 5 (Drosophila)

Omim ID: [108900](#), [187500](#), [600584](#)

Gene Ontology: [Hyperlink](#)

**Gene Summary:** Homeobox-containing genes play critical roles in regulating tissue-specific gene expression essential for tissue differentiation, as well as determining the temporal and spatial patterns of development (Shiojima et al., 1995 [PubMed 7665173]). It has been demonstrated that a Drosophila homeobox-containing gene called 'tinman' is expressed in the developing dorsal vessel and in the equivalent of the vertebrate heart. Mutations in tinman result in loss of heart formation in the embryo, suggesting that tinman is essential for Drosophila heart

formation. Furthermore, abundant expression of Csx, the presumptive mouse homolog of tinman, is observed only in the heart from the time of cardiac differentiation. CSX, the human homolog of murine Csx, has a homeodomain sequence identical to that of Csx and is expressed only in the heart, again suggesting that CSX plays an important role in human heart formation.[supplied by OMIM

---

**Other** NK2 transcription factor homolog E,NK2 transcription factor related,  
**Designations:** locus 5,cardiac-specific homeo box,tinman paralog

---

#### **Related Disease**

---

[Alagille Syndrome](#) [Arthritis, Rheumatoid](#) [Atrial Fibrillation](#) [Cardiovascular Diseases](#)  
[Chromosome Deletion](#) [Congenital Hypothyroidism](#) [Diabetes Mellitus, Type 2](#)  
[Down Syndrome](#) [Ductus Arteriosus, Patent](#) [Ebstein Anomaly](#) [Edema](#)  
[Genetic Predisposition to Disease](#) [Graves Disease](#) [Hand Deformities, Congenital](#)  
[Heart Block](#) [Heart Defects, Congenital](#) [Heart Septal Defects](#) [Heart Septal Defects, Atrial](#)  
[Heart Septal Defects, Ventricular](#)

... see more

---

[服務條款](#) | [隱私權政策](#) | [著作及商標](#) | [網站地圖](#)

©2016 亞諾法生技股份有限公司 Abnova Corporation. 版權所有.