

## CDX1 monoclonal antibody (M01), clone 2D8

Catalog # : H00001044-M01

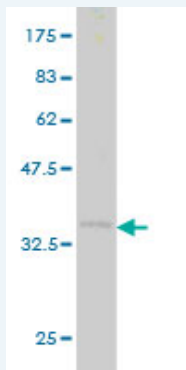
規格 : [ 100 ug ]

[List All](#)

### Specification

<b>Product Description:</b>	Mouse monoclonal antibody raised against a partial recombinant CDX1.
<b>Immunogen:</b>	CDX1 (NP_001795, 126 a.a. ~ 215 a.a) partial recombinant protein with GST tag. MW of the GST tag alone is 26 KDa.
<b>Sequence:</b>	GAQRPTPYEWMRRSVAAGGGGSGKTRTKDKYRWVYTDHQRLELEKE FHYSRYITIRRKSELAANLGLTERQVKIWFQNRRAKERKVNKK
<b>Host:</b>	Mouse
<b>Reactivity:</b>	Human
<b>Isotype:</b>	IgG2a Kappa

**Quality Control Testing:** Antibody Reactive Against Recombinant Protein.



Western Blot detection against Immunogen (35.64 KDa) .

**Storage Buffer:** In 1x PBS, pH 7.4

**Storage Instruction:** Store at -20°C or lower. Aliquot to avoid repeated freezing and thawing.

**MSDS:** [Download](#)

**Datasheet:** [Download](#)

### Publication Reference

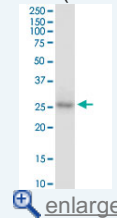
1. Activation of the BMP4 Pathway and Early Expression of CDX2 Characterize Non-specialized Columnar Metaplasia in a Human Model of Barrett's Esophagus.  
Castillo D, Puig S, Iglesias M, Seoane A, de Bolos C, Munitiz V, Parrilla P, Comerma L, Poulosom R, Krishnadath KK, Grande L, Pera M.J *Gastrointest Surg.* 2011 Nov 11.

### Applications

**Western Blot (Tissue lysate)**

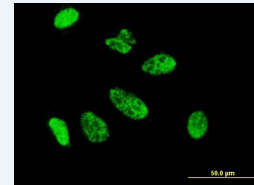
### Application Image

Western Blot (Tissue lysate)



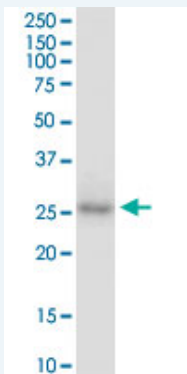
Western Blot (Recombinant protein)

Immunofluorescence



[enlarge](#)

ELISA



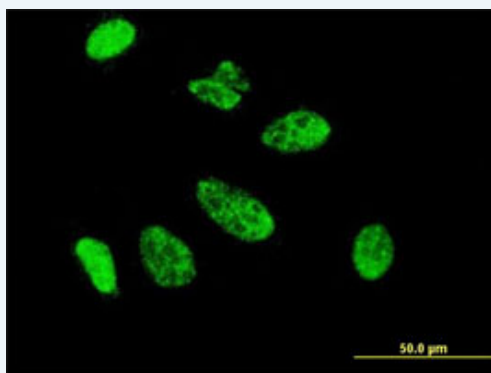
CDX1 monoclonal antibody (M01), clone 2D8. Western Blot analysis of CDX1 expression in human lung cancer.

[Protocol Download](#)

#### Western Blot (Recombinant protein)

[Protocol Download](#)

#### Immunofluorescence



[enlarge this image](#)

Immunofluorescence of monoclonal antibody to CDX1 on HeLa cell . [antibody concentration 10 ug/ml]

[Protocol Download](#)

#### ELISA

#### Gene Information

Entrez GeneID: [1044](#)

GeneBank [NM\\_001804](#)  
Accession#:

Protein [NP\\_001795](#)  
Accession#:

Gene Name: CDX1

Gene Alias: MGC116915

Gene Description: caudal type homeobox 1

Omim ID: [600746](#)

Gene Ontology: [Hyperlink](#)

**Gene Summary:** This gene is a member of the caudal-related homeobox transcription factor gene family. The encoded DNA-binding protein regulates intestine-specific gene expression and enterocyte differentiation. It has been shown to induce expression of the intestinal alkaline phosphatase gene, and inhibit beta-catenin/T-cell factor transcriptional activity. [provided by RefSeq]

**Other** caudal type homeo box transcription factor 1,caudal type homeobox  
**Designations:** transcription factor 1,caudal-type homeobox protein CDX1

---

[服務條款](#) | [隱私權政策](#) | [著作及商標](#) | [網站地圖](#)

©2018 亞諾法生技股份有限公司 Abnova Corporation. 版權所有.