

ATOH1 monoclonal antibody (M01), clone 1B12

Catalog # : H00000474-M01

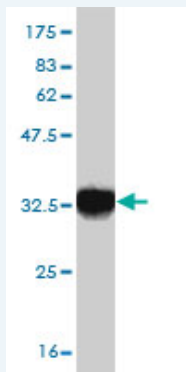
規格 : [100 ug]

[List All](#)

Specification

| | |
|-----------------------------|----------------------------------------------------------------------------------------------------------------------|
| Product Description: | Mouse monoclonal antibody raised against a partial recombinant ATOH1. |
| Immunogen: | ATOH1 (NP_005163.1, 266 a.a. ~ 354 a.a) partial recombinant protein with GST tag. MW of the GST tag alone is 26 KDa. |
| Sequence: | PTPPGSCRTRFSAPASAGGYSVQLDALHFSTFEDSALTAMMAQKNLSP SLPGSILQPVQEENSKTSPRSHRSDFGEFSPHSHYSDSDEAS |
| Host: | Mouse |
| Reactivity: | Human |
| Isotype: | IgG2a Kappa |

Quality Control Testing: Antibody Reactive Against Recombinant Protein.



Western Blot detection against Immunogen (35.53 KDa) .

Storage Buffer: In 1x PBS, pH 7.4

Storage Instruction: Store at -20°C or lower. Aliquot to avoid repeated freezing and thawing.

MSDS: [Download](#)

Datasheet: [Download](#)

Applications

Western Blot (Recombinant protein)

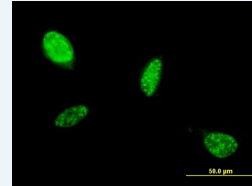
[Protocol Download](#)

Immunofluorescence

Application Image

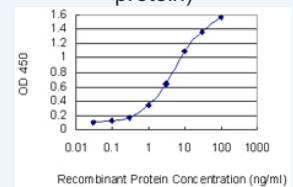
Western Blot (Recombinant protein)

Immunofluorescence



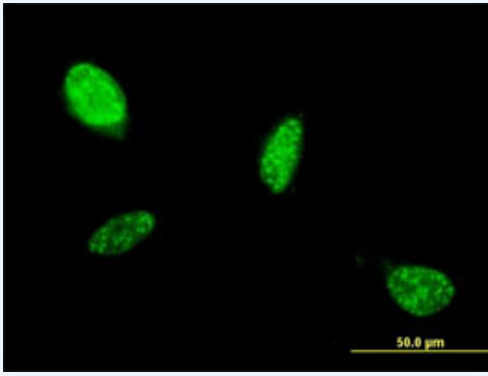
[enlarge](#)

Sandwich ELISA (Recombinant protein)



[enlarge](#)

ELISA

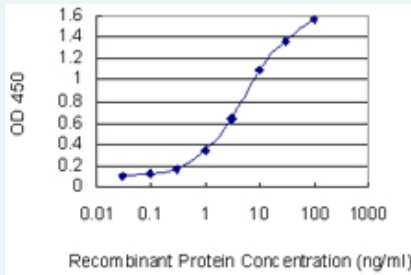


[enlarge this image](#)

Immunofluorescence of monoclonal antibody to ATOH1 on HeLa cell . [antibody concentration 10 ug/ml]

[Protocol Download](#)

Sandwich ELISA (Recombinant protein)



Detection limit for recombinant GST tagged ATOH1 is 0.03 ng/ml as a capture antibody.

[Protocol Download](#)

ELISA

Gene Information

Entrez GeneID: [474](#)

GeneBank [NM_005172](#)

Accession#:

Protein [NP_005163.1](#)

Accession#:

Gene Name: ATOH1

Gene Alias: ATH1,HATH1,MATH-1,bHLHa14

Gene atonal homolog 1 (Drosophila)

Description:

Omim ID: [601461](#)

Gene Ontology: [Hyperlink](#)

Gene Summary: This protein belongs to the basic helix-loop-helix (BHLH) family of transcription factors. It activates E-box dependent transcription along with E47. [provided by RefSeq]

Other atonal homolog 1

Designations: