

AKR1B1 purified MaxPab mouse polyclonal antibody (B01P) MaxPab®

Catalog # : H00000231-B01P

規格 : [50 ug]

[List All](#)

Specification

Product Description: Mouse polyclonal antibody raised against a full-length human AKR1B1 protein.

Immunogen: AKR1B1 (AAH00260, 1 a.a. ~ 316 a.a) full-length human protein.

Sequence:
 MASRLLLNNGAKMPILGLGTWKSPPGQVTEAVKVAIDVGYRHIDCAHVY
 QNENEVGVAIQEKLREQVVKREELFVSKLWCTYHEKGLVKGACQKTL
 DLKLDYLDLYLIHWPTGFKPGKEFFPLDESGNVVPSDTNILD
 TWAAAMEELVDEGLVKAIGISNFNHLQVEMILNKPGLKYKPAVNQIECHPYLTQEKLIQYC
 QSKGIMVTAYSPLGSPDRPWAKPEDPSLLEDPRIKAI
 AAKHNKTTAQLIRFPMQRNLVVIPKSVTPERIAENFKVDFELSSQDMTLLSYNRNWRV
 CALLSCTSHKDYPFHEEF

Host: Mouse

Reactivity: Human

Quality Control Testing: Antibody reactive against mammalian transfected lysate.

Storage Buffer: In 1x PBS, pH 7.4

Storage Instruction: Store at -20°C or lower. Aliquot to avoid repeated freezing and thawing.

MSDS:  [Download](#)

Interspecies: Mouse (86); Rat (86)

Antigen Sequence:

Datasheet:  [Download](#)

Publication Reference

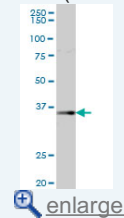
- [Elevated extracellular glucose and uncontrolled type 1 diabetes enhance NFAT5 signaling and disrupt the transverse tubular network in mouse skeletal muscle.](#) Hernandez-Ochoa EO, Robison P, Contreras M, Shen T, Zhao Z, Schneider MF. *Exp Biol Med* (Maywood). 2012 Sep 1;237(9):1068-83. Epub 2012 Sep 10.

Applications

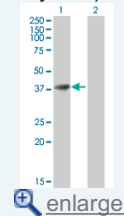
Western Blot (Tissue lysate)

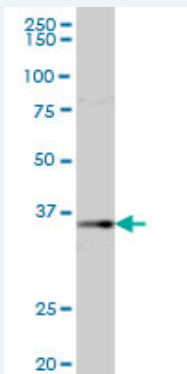
Application Image

Western Blot (Tissue lysate)




Western Blot (Transfected lysate)

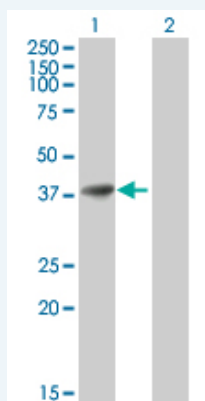




AKR1B1 MaxPab polyclonal antibody. Western Blot analysis of AKR1B1 expression in human kidney.

 [Protocol Download](#)


Western Blot (Transfected lysate)



Western Blot analysis of AKR1B1 expression in transfected 293T cell line ([H00000231-T01](#)) by AKR1B1 MaxPab polyclonal antibody.

Lane 1: AKR1B1 transfected lysate(34.76 KDa).

Lane 2: Non-transfected lysate.

 [Protocol Download](#)

Gene Information

Entrez GeneID: [231](#)

GeneBank [BC000260](#)

Accession#:

Protein [AAH00260](#)

Accession#:

Gene Name: AKR1B1

Gene Alias: ADR,ALDR1,ALR2,AR,MGC1804

Gene Description: aldo-keto reductase family 1, member B1 (aldose reductase)

Description:

Omim ID: [103880](#)

Gene Ontology: [Hyperlink](#)

Gene Summary: This gene encodes a member of the aldo/keto reductase superfamily, which consists of more than 40 known enzymes and proteins. This member catalyzes the reduction of a number of aldehydes, including the aldehyde form of glucose, and is thereby implicated in the development of diabetic complications by catalyzing the reduction of glucose to sorbitol. Multiple pseudogenes have been identified for this gene. The nomenclature system used by the HUGO Gene Nomenclature Committee to define human aldo-keto reductase family members is

known to differ from that used by the Mouse Genome Informatics database. [provided by RefSeq]

Other Lii5-2 CTCL tumor antigen,aldehyde reductase 1,aldo-keto reductase
Designations: family 1, member B1,aldose reductase,low Km aldose reductase

Gene Pathway

[Fructose and mannose metabolism](#) [Galactose metabolism](#) [Glycerolipid metabolism](#)
[Metabolic pathways](#) [Pentose and glucuronate interconversions](#) [Pyruvate metabolism](#)

Related Disease

[Albuminuria](#) [Cardiovascular Diseases](#) [Coronary Disease](#) [Diabetes Complications](#)
[Diabetes Mellitus, Type 1](#) [Diabetes Mellitus, Type 2](#) [Diabetic Angiopathies](#)
[Diabetic Nephropathies](#) [Diabetic Neuropathies](#) [Diabetic Retinopathy](#) [Disease Progression](#)
[Edema](#) [Genetic Predisposition to Disease](#) [Glomerulonephritis, IGA](#) [Hypospadias](#)
[Kidney Failure, Chronic](#) [Renal Insufficiency, Chronic](#)

[服務條款](#) | [隱私權政策](#) | [著作及商標](#) | [網站地圖](#)

©2021 亞諾法生技股份有限公司 Abnova Corporation. 版權所有.