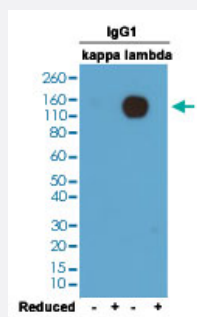


RecomAb™

# Mouse immunoglobulin lambda light chain monoclonal antibody, clone RM110

Catalog # MAB12763      Size 100 ug

## Applications



### Western Blot

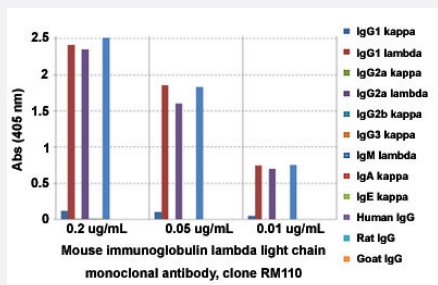
Western blot analysis of nonreduced (-) and reduced (+) mouse IgG1 (kappa) and IgG1 (lambda) (20 ng/lane) with Mouse immunoglobulin lambda light chain monoclonal antibody, clone RM110 (Cat # MAB12763) under 0.2 ug/mL working concentration. This antibody reacts to nonreduced IgG1 (lambda).

### Enzyme-linked Immunoabsorbent Assay

A titer ELISA of mouse IgG1λ. The plate was coated with different amounts of mouse IgG1λ. A serial dilution of Mouse immunoglobulin lambda light chain monoclonal antibody, clone RM110 (Cat# MAB12763) was used as the primary antibody. An alkaline phosphatase conjugated anti-rabbit IgG as the secondary antibody.

### Enzyme-linked Immunoabsorbent Assay

ELISA analysis of Mouse immunoglobulin lambda light chain monoclonal antibody, clone RM110 (Cat # MAB12763) at the following concentrations: 0.2 ug/mL, 0.05 ug/mL, and 0.01 ug/mL. The plate was coated with 50 ng/well of different immunoglobulins and the result shows this antibody reacts to the lambda light chain of mouse immunoglobulins. No cross reactivity with the kappa light chain, human IgG, rat IgG, or goat IgG. An alkaline phosphatase conjugated anti-rabbit IgG as the secondary antibody.



## Specification

<b>Product Description</b>	Rabbit recombinant monoclonal antibody raised against mouse immunoglobulin lambda light chain.
<b>Antibody Species</b>	Rabbit
<b>Immunogen</b>	Original antibody is raised against mouse IgM lambda.
<b>Sequence</b>	N/A
<b>Reactivity</b>	Mouse
<b>Specificity</b>	This antibody reacts to the lambda light chain of mouse immunoglobulins. No cross reactivity with the kappa light chain, human IgG, rat IgG, or goat IgG.
<b>Form</b>	Liquid
<b>Purification</b>	Protein A affinity purification
<b>Isotype</b>	IgG
<b>Recommend Usage</b>	ELISA (0.005 - 0.2 ug/mL) Flow Cytometry Immunocytochemistry (0.5 - 2 ug/mL) Immunohistochemistry (0.5 - 2 ug/mL) Immunoprecipitation Western Blot (0.1 - 0.5 ug/mL) The optimal working dilution should be determined by the end user.
<b>Storage Buffer</b>	In PBS (50% glycerol, 1% BSA, 0.09% sodium azide)
<b>Storage Instruction</b>	Store at -20°C. Aliquot to avoid repeated freezing and thawing.
<b>Note</b>	This product contains sodium azide: a POISONOUS AND HAZARDOUS SUBSTANCE which should be handled by trained staff only.

## Applications

- Western Blot

Western blot analysis of nonreduced (-) and reduced (+) mouse IgG1 (kappa) and IgG1 (lambda) (20 ng/lane) with Mouse immunoglobulin lambda light chain monoclonal antibody, clone RM110 (Cat # MAB12763) under 0.2 ug/mL working concentration. This antibody reacts to nonreduced IgG1 (lambda).

- Immunohistochemistry

- Immunocytochemistry

- Immunoprecipitation

- Enzyme-linked Immunoabsorbent Assay

A titer ELISA of mouse IgG1 $\lambda$ . The plate was coated with different amounts of mouse IgG1 $\lambda$ . A serial dilution of Mouse immunoglobulin lambda light chain monoclonal antibody, clone RM110 (Cat# MAB12763) was used as the primary antibody. An alkaline phosphatase conjugated anti-rabbit IgG as the secondary antibody.

- Enzyme-linked Immunoabsorbent Assay

ELISA analysis of Mouse immunoglobulin lambda light chain monoclonal antibody, clone RM110 (Cat # MAB12763) at the following concentrations: 0.2 ug/mL, 0.05 ug/mL, and 0.01 ug/mL. The plate was coated with 50 ng/well of different immunoglobulins and the result shows this antibody reacts to the lambda light chain of mouse immunoglobulins. No cross reactivity with the kappa light chain, human IgG, rat IgG, or goat IgG. An alkaline phosphatase conjugated anti-rabbit IgG as the secondary antibody.

- Flow Cytometry

## Gene Info — Igl-C1

Entrez GeneID	<a href="#">110785</a>
---------------	------------------------

Protein Accession#	<a href="#">P01843</a>
--------------------	------------------------

Gene Name	Igl-C1
-----------	--------

Gene Alias	Clambda1
------------	----------

Gene Description	immunoglobulin lambda chain, constant region 1
------------------	--

Gene Ontology	<a href="#">Hyperlink</a>
---------------	---------------------------

Gene Summary	O
--------------	---

Other Designations	-
--------------------	---