

Precipitor™ 16



High Throughput Immunoprecipitation and Purification

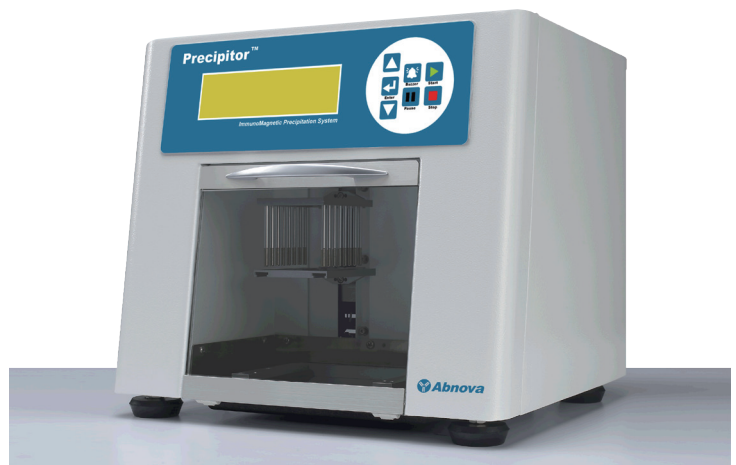
Abnova's Precipitor™ 16 system is an automated magnetic bead platform for high throughput precipitation and purification of proteins. Combining 96 deep well plate with affinity conjugated magnetic beads, Precipitor™ 16 easily handles 16 different assays simultaneously by transferring beads from one well to the next for mixing, binding, washing, and elution reactions via the robotic action of parallel magnetic rods. It simplifies the routine yet labor-intensive process and addresses the needs of rigorous proteomic screening and biomarker discovery applications such as immunoprecipitation (IP, ChIP, RIP), recombinant protein purification, and protein-protein interaction. Precipitor™ 16 delivers reproducible and consistent results by obviating the drawbacks of manual operation. Its integrated on-screen display allows easy change of parameters tailored to your experiment. Moreover, you can select from a large scope of available antibody reagents to accelerate your research!

Applications

- Immunoprecipitation
- Chromatin-Immunoprecipitation
- RNA-Immunoprecipitation
- Recombinant Protein Purification
- Protein-Protein Interaction
- Nucleic Acid Extraction

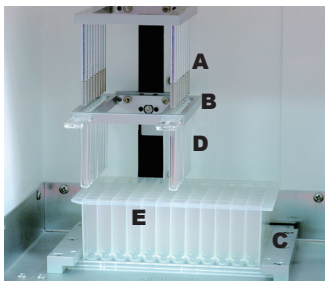
Advantages

- Rapid, multi-step automation
- Compatible with 96 well plate format
- Reproducibility and consistency of results
- Multiplex analysis of up to 16 analytes
- No external device or PC required



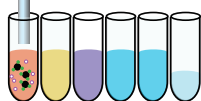
Affinity Magnetic Precipitation Principle

● Magnetic protein A bead ● Antibody ● Target ● Non-specific

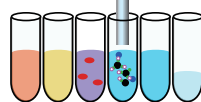


- (A) Magnetic rods
- (B) Cover strip rack
- (C) 96 deep well plate rack
- (D) 8-channel cover strip
- (E) 96 deep well plate

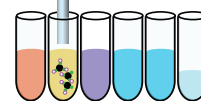
Step 1
Mix antibody with protein A beads



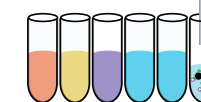
Step 4
Wash with PBS/T



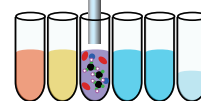
Step 2
Blocking to remove non-specific binding



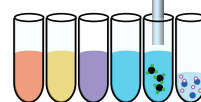
Step 5
Elute



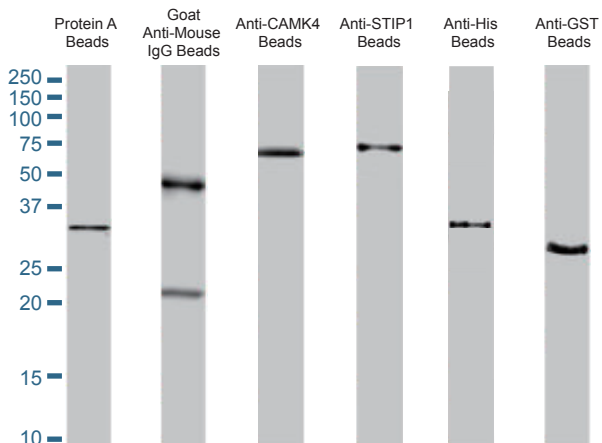
Step 3
React with sample lysate



Step 6
Release

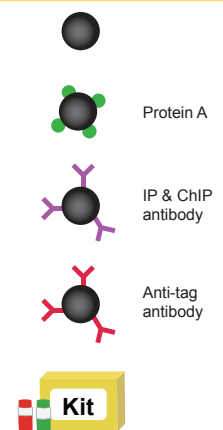


Demonstration of Precipitor™ 16



Accessory Reagents

- Naked Bead
- Indirect Antibody Conjugation
 - Protein A Bead
- Direct Antibody Conjugation
 - IP and ChIP Ab Bead
- Protein Purification
 - Anti-His Bead
 - Ni-NTA Bead
- Nucleic Acid Extraction Kits
 - Blood/Cultured Cell
 - Buffy Coat
 - Tissue Total
 - Plant
 - Bacteria



See Abnova website under "Systems" for more accessory reagents.