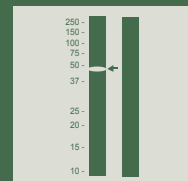


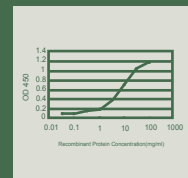
Fluorescence In Situ Hybridization (FISH)



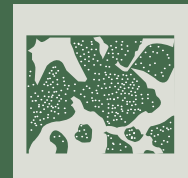
Western Blot



Sandwich ELISA



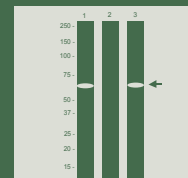
Immunohistochemistry



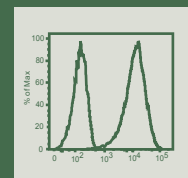
Immunofluorescence



Immunoprecipitation

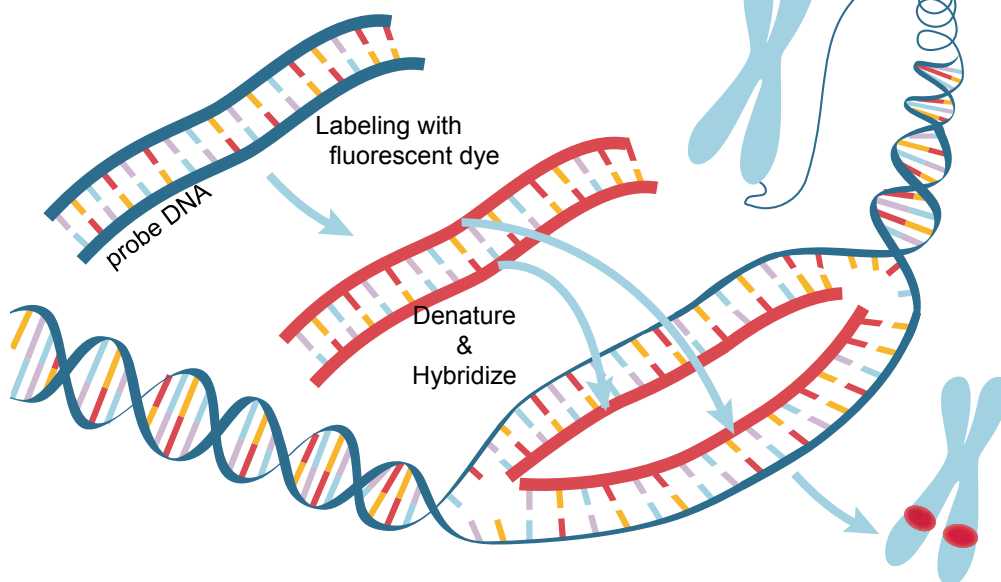


Flow Cytometry



Introduction	1
Gene FISH Probes	3
Split FISH Probes	11
Translocation FISH Probes	13
Chromosome FISH Probes	13
Subtelomere FISH Probes	17
Prenatal FISH Probes	20
Make to order	21
Accessory Kits & Reagents	22

Fluorescence In Situ Hybridization



Abnova Corporation

www.abnova.com

Email: sales@abnova.com

Address: 9F, No. 108, Jhouzih St., Neihu, Taipei 114, Taiwan

Tel: + 886 2 8751 1888 Fax: + 886 2 6602 1218

Fluorescence In Situ Hybridization (FISH)

FISH is a technique used to identify and localize the presence or absence of specific DNA sequences on cells and tissues. Abnova provides over 600 FISH probes for identification of gene amplification, split, translocation, subtelomere aberration, prenatal chromosomal aberration and chromosomal markers. It is fast, sensitive, and specific. We are expanding our FISH probe portfolio rapidly to meet your research needs. Custom-made probes are also available upon request.

Advantages

- Single, dual, and multiple colored probes for fast, sensitive, and specific detection
- Work on metaphase spread, paraffin embedded and frozen tissue
- High signal-to-noise ratio
- Low cross-reactivity

Preparation of FISH probe

1. Ready to Use

Gene FISH Probe (Cat # FGxxxx), Split FISH Probe (Cat # FSxxxx), Translocation FISH Probe (Cat # FTxxxx), Prenatal FISH Probe (Cat # FMxxxx), and Made to Order FISH Probe (Ca # FAxxxx) are ready to use, no need of any preparation.

2. Dilute Before Use

Chromosome FISH Probe (Cat # FCxxxx) and Subtelomere FISH Probe (Cat # FExxxx) are provided in 5x concentrated format, they should be either:

A. Diluted to 1x with FISH Hybridization Buffer (Cat # U0028 or U0029) before use,
OR

B. Mixed with same category of FISH Probes (up to 5 different probes) to use, for example:

Combine 2 different probes:

1 volume of probe 1 (2 uL) + 1 volume of probe 2 (2 uL)
+ 3 volume of FISH Hybridization Buffer (6 uL)

Combine 3 different probes:

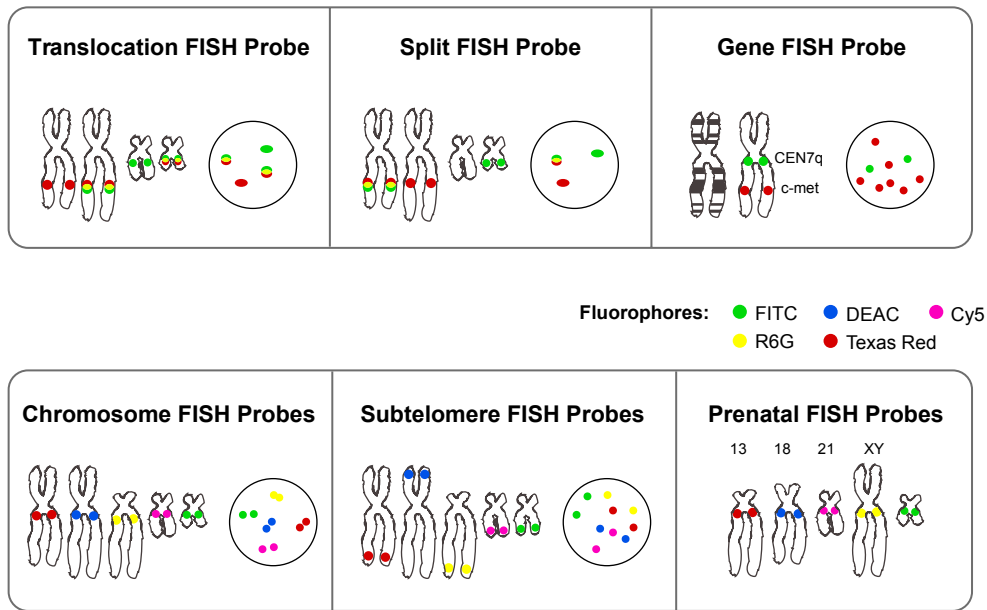
1 volume of probe 1 (2 uL) + 1 volume of probe 2 (2 uL)
+ 1 volume of probe 3 (2 uL)
+ 2 volume of FISH Hybridization Buffer (4 uL)

Recommended Filter Set

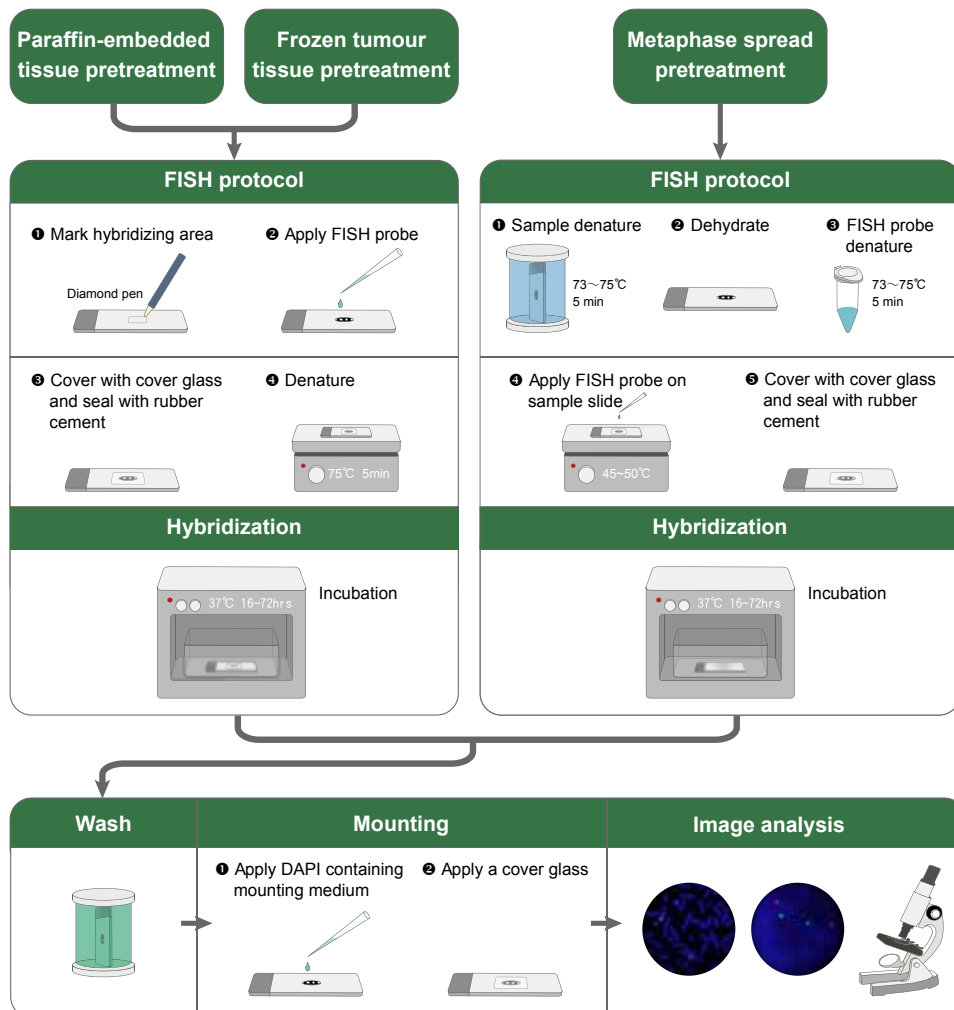
Fluorophore	Brand	Recommended Filter Set
Single Fluorophore:		
FITC (EX. 426; EM. 480)	Semrock	SpGr-B
Texas Red (EX. 593; EM. 612)	Semrock	SpRed-B
DEAC (EX. 426; EM. 480)	Semrock	SpAqua-B
R6G (EX. 525; EM. 550)	Semrock	SpGold-B
Cy5 (EX. 650; EM. 668)	Semrock	CYS-4040B
Multiple Fluorophore:		
FITC, Texas Red & DAPI	Semrock	DA/SpGr/SpRed-A

Note: EX. = excitation wavelength; EM. = emission wavelength

Product Lines

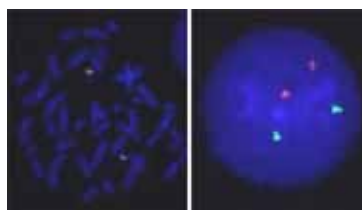


Procedure



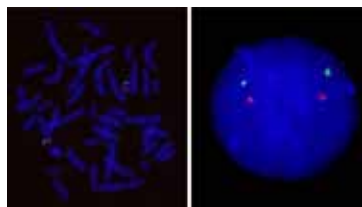
Gene FISH Probes

Product Information



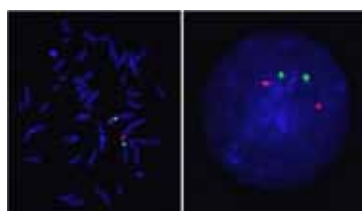
Cat.Num FG0034
Product Name AIB1/CEN20q FISH Probe

	Probe Name	Size	Fluorophore	Location
Probe 1	AIB1	Approximately 350kb	Texas Red	20q12
Probe 2	CEN20q	Approximately 680kb	FITC	20q11.22
Probe Gap	The gap between two probes is approximately 9,300 kb.			



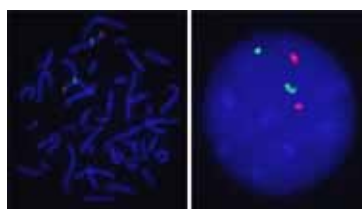
Cat.Num FG0014
Product Name AKT2/CEN19p FISH Probe

	Probe Name	Size	Fluorophore	Location
Probe 1	AKT2	Approximately 160kb	Texas Red	19q13.13
Probe 2	CEN19p	Approximately 570kb	FITC	19p13.11
Probe Gap	The gap between two probes is approximately 17,800 kb.			



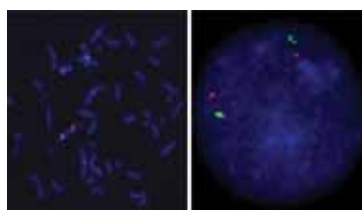
Cat.Num FG0036
Product Name ALK/CEN2p FISH Probe

	Probe Name	Size	Fluorophore	Location
Probe 1	ALK	Approximately 540kb	Texas Red	2p23
Probe 2	CEN2p	Approximately 670kb	FITC	2p11.2
Probe Gap	The gap between two probes is approximately 55,300 kb.			



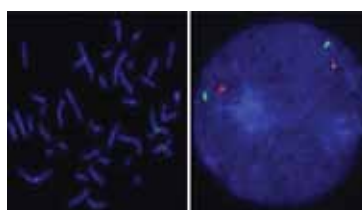
Cat.Num FG0021
Product Name APC/CEN5q FISH Probe

	Probe Name	Size	Fluorophore	Location
Probe 1	APC	Approximately 420kb	Texas Red	5q22.2
Probe 2	CEN5q	Approximately 700kb	FITC	5q11.2
Probe Gap	The gap between two probes is approximately 59,200 kb.			



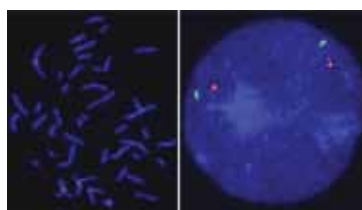
Cat.Num FG0055
Product Name ATOX1/CEN5q FISH Probe

	Probe Name	Size	Fluorophore	Location
Probe 1	ATOX1	Approximately 250kb	Texas Red	5q32
Probe 2	CEN5q	Approximately 700kb	FITC	5q11.2
Probe Gap	The gap between two probes is approximately 98,300 kb.			



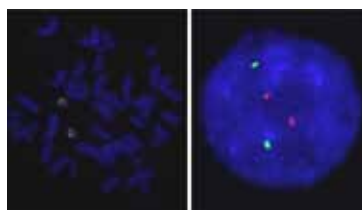
Cat.Num FG0056
Product Name ATP7A/CENXp FISH Probe

	Probe Name	Size	Fluorophore	Location
Probe 1	ATP7A	Approximately 350kb	Texas Red	Xq21.1
Probe 2	CENXp	Approximately 550kb	FITC	Xp11.22
Probe Gap	The gap between two probes is approximately 27,500 kb.			



Cat.Num FG0057
Product Name ATP7B/CEN13q FISH Probe

	Probe Name	Size	Fluorophore	Location
Probe 1	ATP7B	Approximately 350kb	Texas Red	13q14.3
Probe 2	CEN13q	Approximately 550kb	FITC	13q12.11
Probe Gap	The gap between two probes is approximately 24,100 kb.			

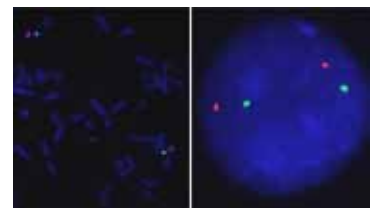
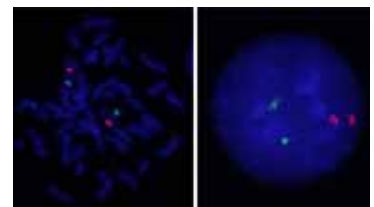
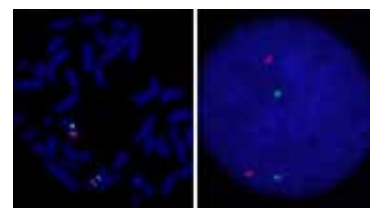
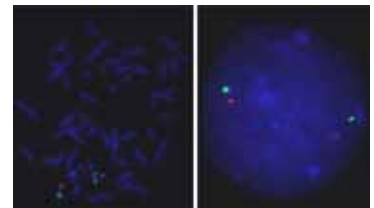
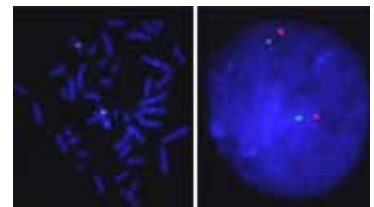
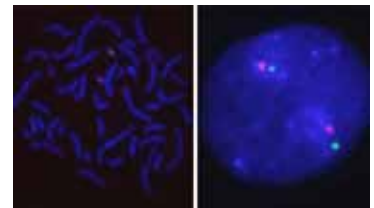
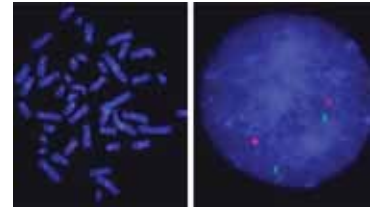
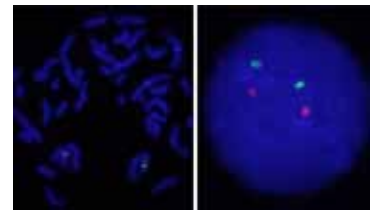


Cat.Num FG0030
Product Name CALR/CEN19q FISH Probe

	Probe Name	Size	Fluorophore	Location
Probe 1	CALR	Approximately 260kb	Texas Red	19p13.1-13.2
Probe 2	CEN19q	Approximately 400kb	FITC	19q12
Probe Gap	The gap between two probes is approximately 17,100 kb.			

Gene FISH Probes

Product Information				
Cat.Num	FG0010			
Product Name	CCND1/CEN11p FISH Probe			
	Probe Name	Size	Fluorophore	Location
Probe 1	CCND1	Approximately 400kb	Texas Red	11q13
Probe 2	CEN11p	Approximately 630kb	FITC	11p11.12
Probe Gap	The gap between two probes is approximately 21,600 kb.			
Cat.Num	FG0052			
Product Name	CCND1/CEN11p FISH Probe			
	Probe Name	Size	Fluorophore	Location
Probe 1	CCND1	Approximately 270kb	Texas Red	11q13
Probe 2	CEN11p	Approximately 630kb	FITC	11p11.12
Probe Gap	The gap between two probes is approximately 21,600 kb.			
Cat.Num	FG0013			
Product Name	CCNE1/CEN19p FISH Probe			
	Probe Name	Size	Fluorophore	Location
Probe 1	CCNE1	Approximately 150kb	Texas Red	19q12
Probe 2	CEN19p	Approximately 570kb	FITC	19p13.11
Probe Gap	The gap between two probes is approximately 7,350 kb.			
Cat.Num	FG0033			
Product Name	CDK4/CEN12q FISH Probe			
	Probe Name	Size	Fluorophore	Location
Probe 1	CDK4	Approximately 350kb	Texas Red	12q14.1
Probe 2	CEN12q	Approximately 580kb	FITC	12q12
Probe Gap	The gap between two probes is approximately 13,900 kb.			
Cat.Num	FG0032			
Product Name	CHGA-ITPK1/CEN14q FISH Probe			
	Probe Name	Size	Fluorophore	Location
Probe 1	CHGA-ITPK1	Approximately 270kb	Texas Red	14q32
Probe 2	CEN14q	Approximately 400kb	FITC	14q11.2
Probe Gap	The gap between two probes is approximately 59,900 kb.			
Cat.Num	FG0004			
Product Name	c-met/CEN7q FISH Probe			
	Probe Name	Size	Fluorophore	Location
Probe 1	c-met	Approximately 270kb	Texas Red	7q31
Probe 2	CEN7q	Approximately 820kb	FITC	7q11.21
Probe Gap	The gap between two probes is approximately 51,200 kb.			
Cat.Num	FG0009			
Product Name	c-myc/CEN8p FISH Probe			
	Probe Name	Size	Fluorophore	Location
Probe 1	c-myc	Approximately 240kb	Texas Red	8q24.12-q24.13
Probe 2	CEN8p	Approximately 520kb	FITC	8p11.21
Probe Gap	The gap between two probes is approximately 88,100 kb.			
Cat.Num	FG0065			
Product Name	c-myc/CEN8p FISH Probe			
	Probe Name	Size	Fluorophore	Location
Probe 1	c-myc	Approximately 160kb	Texas Red	8q24.12-q24.13
Probe 2	CEN8p	Approximately 520kb	FITC	8p11.21
Probe Gap	The gap between two probes is approximately 88,100 kb.			



Gene FISH Probes

Product Information

Cat.Num	FG0008			
Product Name	CX43/CEN6 FISH Probe			
	Probe Name	Size	Fluorophore	Location
Probe 1	CX43	Approximately 150kb	Texas Red	6q21-q23.2
Probe 2	CEN6p	Approximately 660kb	FITC	6p12.1
Probe Gap	The gap between two probes is approximately 66,600 kb.			

Cat.Num	FG0043			
Product Name	CXCL1/CEN4q FISH Probe			
	Probe Name	Size	Fluorophore	Location
Probe 1	CXCL1	Approximately 350kb	Texas Red	4q21
Probe 2	CEN4q	Approximately 650kb	FITC	4q12
Probe Gap	The gap between two probes is approximately 16,100 kb			

Cat.Num	FG0045			
Product Name	DTNB/CEN2p FISH Probe			
	Probe Name	Size	Fluorophore	Location
Probe 1	DTNB	Approximately 380kb	Texas Red	2p24
Probe 2	CEN2p	Approximately 670kb	FITC	2p11.2
Probe Gap	The gap between two probes is approximately 59,300 kb			

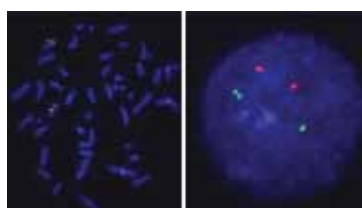
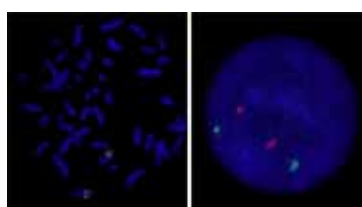
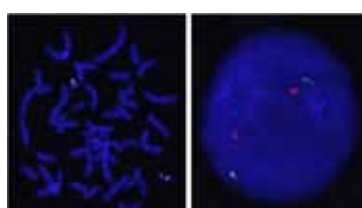
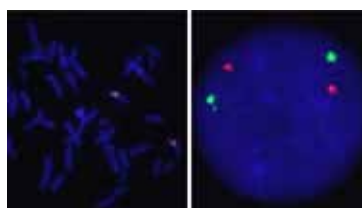
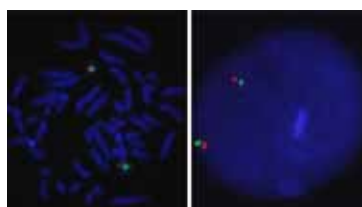
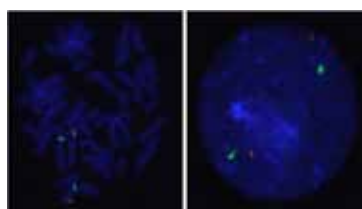
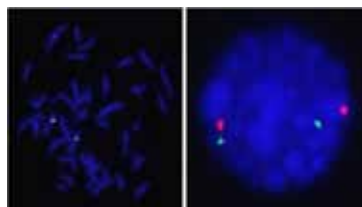
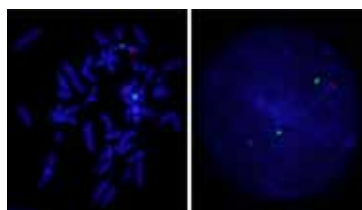
Cat.Num	FG0015			
Product Name	DYRK1A/CEN21q FISH Probe			
	Probe Name	Size	Fluorophore	Location
Probe 1	DYRK1A	Approximately 570kb	Texas Red	21q22.13
Probe 2	CEN21q	Approximately 520kb	FITC	21q11.2
Probe Gap	The gap between two probes is approximately 14,000 kb.			

Cat.Num	FG0005			
Product Name	EGFR/CEN7q FISH Probe			
	Probe Name	Size	Fluorophore	Location
Probe 1	EGFR	Approximately 300kb	Texas Red	7p12
Probe 2	CEN7q	Approximately 820kb	FITC	7q11.21
Probe Gap	The gap between two probes is approximately 8,900 kb.			

Cat.Num	FG0037			
Product Name	ERCC1/CEN19p FISH Probe			
	Probe Name	Size	Fluorophore	Location
Probe 1	ERCC1	Approximately 320kb	Texas Red	19q13.32
Probe 2	CEN19p	Approximately 570kb	FITC	19p13.11
Probe Gap	The gap between two probes is approximately 22,900 kb			

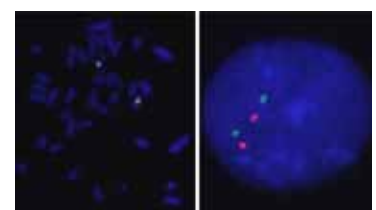
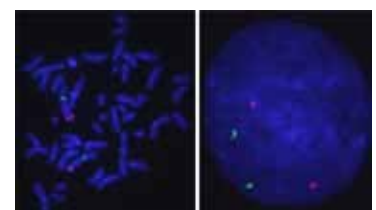
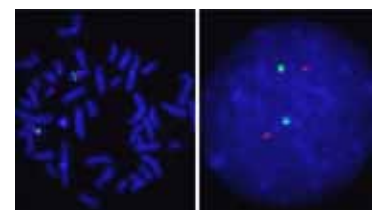
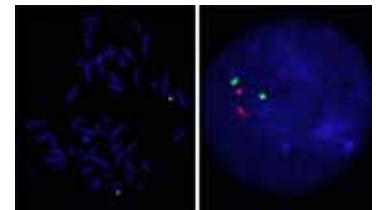
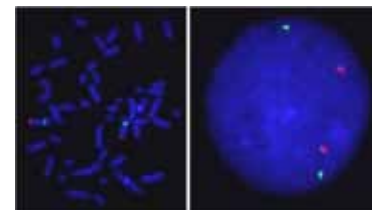
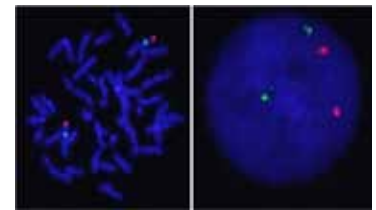
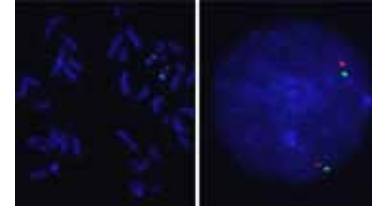
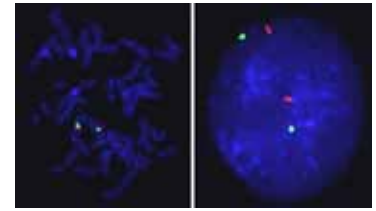
Cat.Num	FG0001			
Product Name	FGF23/CEN12p FISH Probe			
	Probe Name	Size	Fluorophore	Location
Probe 1	FGF23	Approximately 300kb	Texas Red	12p13
Probe 2	CEN12p	Approximately 530kb	FITC	12p11.22
Probe Gap	The gap between two probes is approximately 25,100 kb.			

Cat.Num	FG0058			
Product Name	FGF3,FGF4/CEN11p FISH Probe			
	Probe Name	Size	Fluorophore	Location
Probe 1	FGF3,FGF4	Approximately 320kb	Texas Red	11q13.3
Probe 2	CEN11p	Approximately 630kb	FITC	11p11.12
Probe Gap	The gap between two probes is approximately 21,900 kb.			



Gene FISH Probes

Product Information				
Cat.Num	FG0049			
Product Name	FGFR1/CEN8q FISH Probe			
	Probe Name	Size	Fluorophore	Location
Probe 1	FGFR1	Approximately 320kb	Texas Red	8p12
Probe 2	CEN8q	Approximately 520kb	FITC	8q11.21
Probe Gap	The gap between two probes is approximately 11,000 kb			
Cat.Num	FG0018			
Product Name	FGFR2/CEN10p FISH Probe			
	Probe Name	Size	Fluorophore	Location
Probe 1	FGFR2	Approximately 330kb	Texas Red	10q26
Probe 2	CEN10p	Approximately 640kb	FITC	10p11.22
Probe Gap	The gap between two probes is approximately 91,200 kb.			
Cat.Num	FG0050			
Product Name	FGFR3/CEN4p FISH Probe			
	Probe Name	Size	Fluorophore	Location
Probe 1	FGFR3	Approximately 400kb	Texas Red	4p16.3
Probe 2	CEN4q	Approximately 650kb	FITC	4q13
Probe Gap	The gap between two probes is approximately 55,800 kb			
Cat.Num	FG0051			
Product Name	FGFR4/CEN5q FISH Probe			
	Probe Name	Size	Fluorophore	Location
Probe 1	FGFR4	Approximately 450kb	Texas Red	5q35.1
Probe 2	CEN5q	Approximately 700kb	FITC	5q11.2
Probe Gap	The gap between two probes is approximately 123,600 kb			
Cat.Num	FG0006			
Product Name	HER2/CEN17q FISH Probe			
	Probe Name	Size	Fluorophore	Location
Probe 1	HER2	Approximately 220kb	Texas Red	17q21.1
Probe 2	CEN17q	Approximately 540kb	FITC	17q11.2
Probe Gap	The gap between two probes is approximately 5,700 kb.			
Cat.Num	FG0023			
Product Name	HER3/CEN12p FISH Probe			
	Probe Name	Size	Fluorophore	Location
Probe 1	HER3	Approximately 320kb	Texas Red	12q13
Probe 2	CEN12p	Approximately 530kb	FITC	12p11.22
Probe Gap	The gap between two probes is approximately 36,000 kb.			
Cat.Num	FG0024			
Product Name	HER4/CEN2p FISH Probe			
	Probe Name	Size	Fluorophore	Location
Probe 1	HER4	Approximately 360kb	Texas Red	2q33-q34
Probe 2	CEN2p	Approximately 670kb	FITC	2p11.2
Probe Gap	The gap between two probes is approximately 126,300 kb.			
Cat.Num	FG0017			
Product Name	KRAS/CEN12q FISH Probe			
	Probe Name	Size	Fluorophore	Location
Probe 1	KRAS	Approximately 250kb	Texas Red	12p12
Probe 2	CEN12q	Approximately 580kb	FITC	12q12
Probe Gap	The gap between two probes is approximately 17,900 kb.			



Gene FISH Probes

Product Information

Cat.Num FG0059
Product Name LAMP2/CENXp FISH Probe

	Probe Name	Size	Fluorophore	Location
Probe 1	LAMP2	Approximately 250kb	Texas Red	Xq24
Probe 2	CENXp	Approximately 550kb	FITC	Xp11.22
Probe Gap	The gap between two probes is approximately 70,000 kb.			

Cat.Num FG0060
Product Name LC3/CEN20p FISH Probe

	Probe Name	Size	Fluorophore	Location
Probe 1	LC3	Approximately 400kb	Texas Red	20q11.22
Probe 2	CEN20p	Approximately 400kb	FITC	20p11.21
Probe Gap	The gap between two probes is approximately 10,400 kb.			

Cat.Num FG0020
Product Name MDM2/CEN12p FISH Probe

	Probe Name	Size	Fluorophore	Location
Probe 1	MDM2	Approximately 270kb	Texas Red	12q14.3-q15
Probe 2	CEN12p	Approximately 530kb	FITC	12p11.22
Probe Gap	The gap between two probes is approximately 38,700 kb.			

Cat.Num FG0054
Product Name MDM4/CEN1q FISH Probe

	Probe Name	Size	Fluorophore	Location
Probe 1	MDM4	Approximately 350kb	Texas Red	1q32
Probe 2	CEN1q	Approximately 600kb	FITC	1q21.3
Probe Gap	The gap between two probes is approximately 49,700 kb.			

Cat.Num FG0040
Product Name MEN1/CEN11p FISH Probe

	Probe Name	Size	Fluorophore	Location
Probe 1	MEN1	Approximately 500kb	Texas Red	11q13
Probe 2	CEN11p	Approximately 630kb	FITC	11p11.12
Probe Gap	The gap between two probes is approximately 16,700 kb.			

Cat.Num FG0016
Product Name MLL/CEN11p FISH Probe

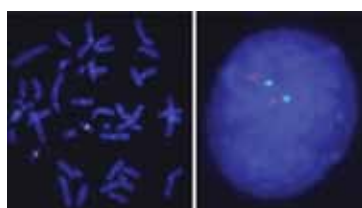
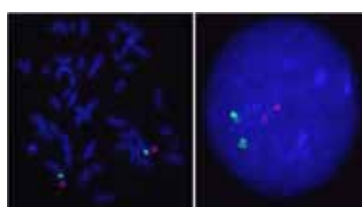
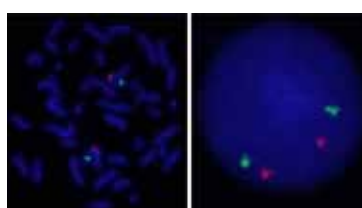
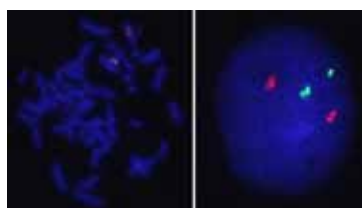
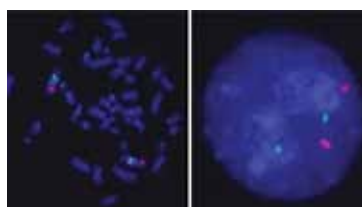
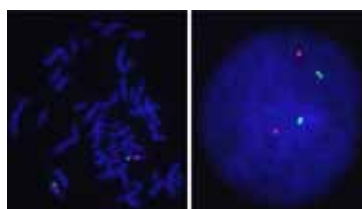
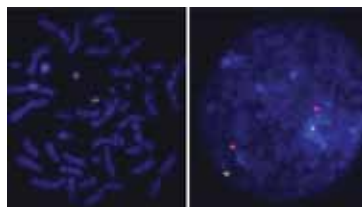
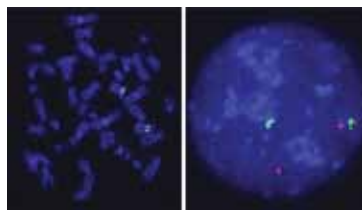
	Probe Name	Size	Fluorophore	Location
Probe 1	MLL	Approximately 380kb	Texas Red	11q23.3
Probe 2	CEN11p	Approximately 630kb	FITC	11p11.12
Probe Gap	The gap between two probes is approximately 70,500 kb.			

Cat.Num FG0048
Product Name MYCN/CEN2p FISH Probe

	Probe Name	Size	Fluorophore	Location
Probe 1	MYCN	Approximately 270kb	Texas Red	2p24.1
Probe 2	CEN2p	Approximately 670kb	FITC	2p11.2
Probe Gap	The gap between two probes is approximately 69,000 kb.			

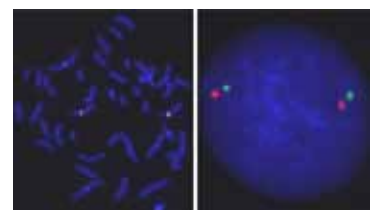
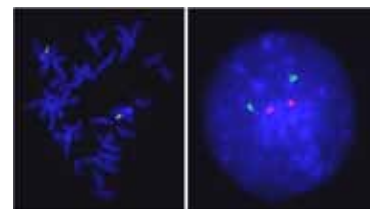
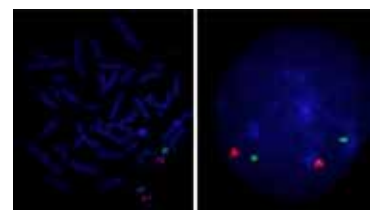
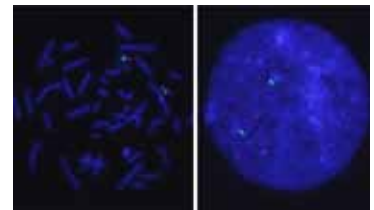
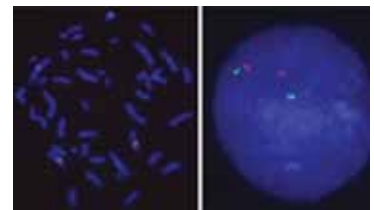
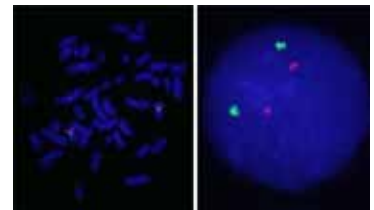
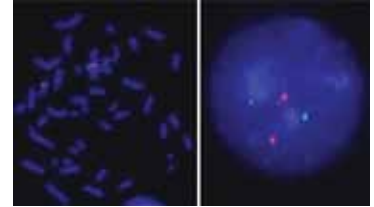
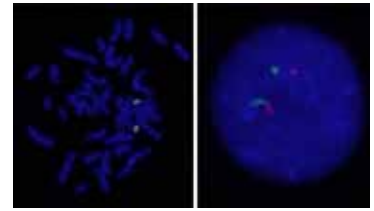
Cat.Num FG0053
Product Name NF1/CEN17q FISH Probe

	Probe Name	Size	Fluorophore	Location
Probe 1	NF1	Approximately 260kb	Texas Red	17q11.2
Probe 2	CEN17q	Approximately 540kb	FITC	17q11.2
Probe Gap	The gap between two probes is approximately 2,740 kb.			



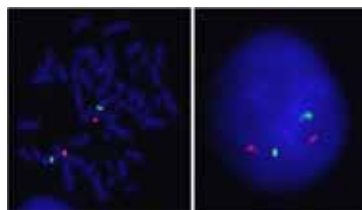
Gene FISH Probes

Product Information				
Cat.Num	FG0003			
Product Name	NF2/CEN22q FISH Probe			
	Probe Name	Size	Fluorophore	Location
Probe 1	NF2	Approximately 300kb	Texas Red	22q12.2
Probe 2	CEN22q	Approximately 620kb	FITC	22q11.22
Probe Gap	The gap between two probes is approximately 4,000 kb.			
Cat.Num	FG0061			
Product Name	p14/CEN11p FISH Probe			
	Probe Name	Size	Fluorophore	Location
Probe 1	p14	Approximately 270kb	Texas Red	11q13.2
Probe 2	CEN11p	Approximately 630kb	FITC	11p11.12
Probe Gap	The gap between two probes is approximately 19,600 kb.			
Cat.Num	FG0002			
Product Name	p16/CEN9q FISH Probe			
	Probe Name	Size	Fluorophore	Location
Probe 1	p16	Approximately 110kb	Texas Red	9p21
Probe 2	CEN9q	Approximately 470kb	FITC	9q21
Probe Gap	The gap between two probes is approximately 49,380 kb.			
Cat.Num	FG0062			
Product Name	p21/CEN6p FISH Probe			
	Probe Name	Size	Fluorophore	Location
Probe 1	p21	Approximately 270kb	Texas Red	6p21.2
Probe 2	CEN6p	Approximately 660kb	FITC	6p12.1
Probe Gap	The gap between two probes is approximately 11,500 kb.			
Cat.Num	FG0011			
Product Name	p53/CEN17q FISH Probe			
	Probe Name	Size	Fluorophore	Location
Probe 1	p53	Approximately 190kb	Texas Red	17p13.1
Probe 2	CEN17q	Approximately 540kb	FITC	17q11.2
Probe Gap	The gap between two probes is approximately 24,700 kb.			
Cat.Num	FG0019			
Product Name	PTEN/CEN10p FISH Probe			
	Probe Name	Size	Fluorophore	Location
Probe 1	PTEN	Approximately 470kb	Texas Red	10q23
Probe 2	CEN10p	Approximately 640kb	FITC	10p11.22
Probe Gap	The gap between two probes is approximately 57,500 kb.			
Cat.Num	FG0038			
Product Name	PTPRT/CEN20p FISH Probe			
	Probe Name	Size	Fluorophore	Location
Probe 1	PTPRT	Approximately 450kb	Texas Red	20q12-q13
Probe 2	CEN20q	Approximately 680kb	FITC	20q11.22
Probe Gap	The gap between two probes is approximately 4,200 kb.			
Cat.Num	FG0031			
Product Name	RUNX2/CEN6p FISH Probe			
	Probe Name	Size	Fluorophore	Location
Probe 1	RUNX2	Approximately 230kb	Texas Red	6p21
Probe 2	CEN6p	Approximately 660kb	FITC	6p12.1
Probe Gap	The gap between two probes is approximately 2,800 kb.			



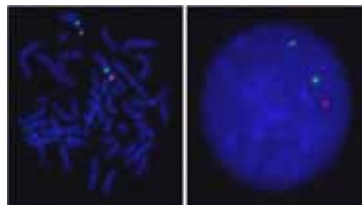
Gene FISH Probes

Product Information



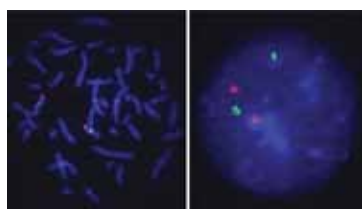
Cat.Num FG0039
Product Name SDHB/CEN1p FISH Probe

	Probe Name	Size	Fluorophore	Location
Probe 1	SDHB	Approximately 400kb	Texas Red	1p36.13
Probe 2	CEN1p	Approximately 780kb	FITC	1p13.3
Probe Gap	The gap between two probes is approximately 92,300 kb			



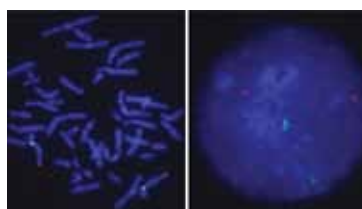
Cat.Num FG0046
Product Name SERPINB6/CEN6p FISH Probe

	Probe Name	Size	Fluorophore	Location
Probe 1	SERPINB6	Approximately 400kb	Texas Red	6p25
Probe 2	CEN6p	Approximately 660kb	FITC	6p12.1
Probe Gap	The gap between two probes is approximately 45,000 kb			



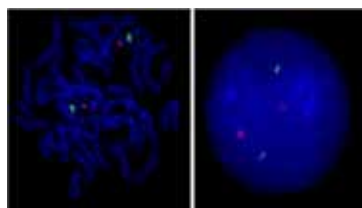
Cat.Num FG0063
Product Name SLC31A/CEN9q FISH Probe

	Probe Name	Size	Fluorophore	Location
Probe 1	SLC31A	Approximately 300kb	Texas Red	9q32
Probe 2	CEN9q	Approximately 470kb	FITC	9q21
Probe Gap	The gap between two probes is approximately 44,000 kb.			



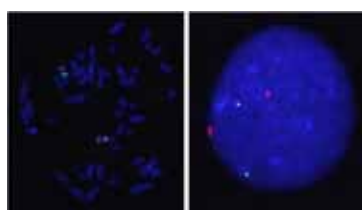
Cat.Num FG0064
Product Name SQSTM1/CEN5q FISH Probe

	Probe Name	Size	Fluorophore	Location
Probe 1	SQSTM1	Approximately 350kb	Texas Red	5q35.3
Probe 2	CEN5q	Approximately 700kb	FITC	5q11.2
Probe Gap	The gap between two probes is approximately 126,300 kb.			



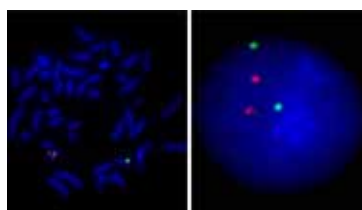
Cat.Num FG0047
Product Name SYT9/CEN11p FISH Probe

	Probe Name	Size	Fluorophore	Location
Probe 1	SYT9	Approximately 400kb	Texas Red	11p15.4
Probe 2	CEN11p	Approximately 630kb	FITC	11p11.12
Probe Gap	The gap between two probes is approximately 39,400 kb			



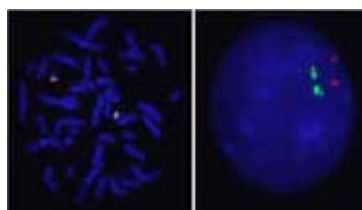
Cat.Num FG0042
Product Name TNIK/CEN3q FISH Probe

	Probe Name	Size	Fluorophore	Location
Probe 1	TNIK	Approximately 490kb	Texas Red	3q26.2-p26.31
Probe 2	CEN3q	Approximately 500kb	FITC	3q12.1
Probe Gap	The gap between two probes is approximately 74,800 kb			



Cat.Num FG0007
Product Name TOP2A/CEN17q FISH Probe

	Probe Name	Size	Fluorophore	Location
Probe 1	TOP2A	Approximately 180kb	Texas Red	17q21
Probe 2	CEN17q	Approximately 540kb	FITC	17q11.2
Probe Gap	The gap between two probes is approximately 6,400 kb.			

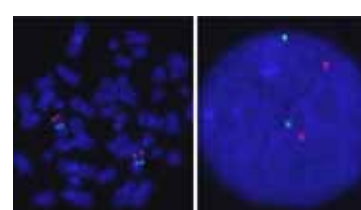
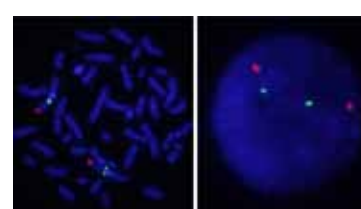
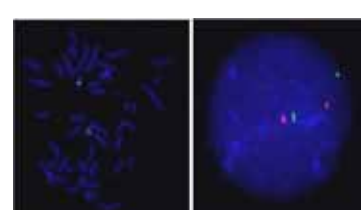
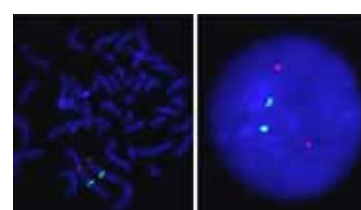
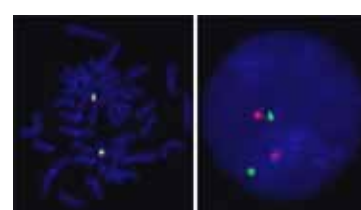
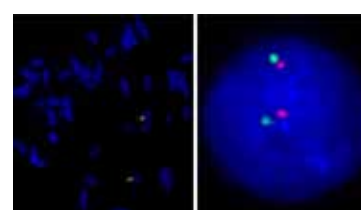
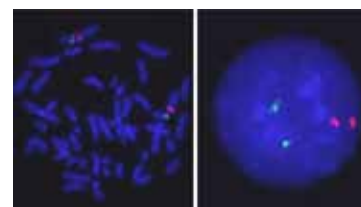
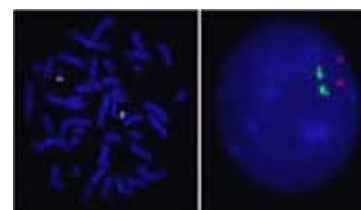


Cat.Num FG0044
Product Name TPM4/CEN19q FISH Probe

	Probe Name	Size	Fluorophore	Location
Probe 1	TPM4	Approximately 380kb	Texas Red	19p13.1
Probe 2	CEN19q	Approximately 400kb	FITC	19q12
Probe Gap	The gap between two probes is approximately 13,800 kb			

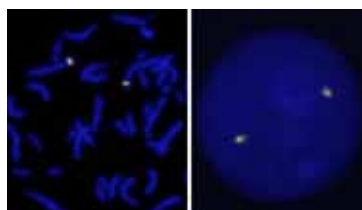
Gene FISH Probes

Product Information				
Cat.Num	FG0041			
Product Name	TPX2/CEN20p FISH Probe			
	Probe Name	Size	Fluorophore	Location
Probe 1	TPX2	Approximately 150kb	Texas Red	20q11.2
Probe 2	CEN20p	Approximately 400kb	FITC	20p11.21
Probe Gap	The gap between two probes is approximately 7,900 kb			
Cat.Num	FG0026			
Product Name	TRF1/CEN8p FISH Probe			
	Probe Name	Size	Fluorophore	Location
Probe 1	TRF1	Approximately 290kb	Texas Red	8q13
Probe 2	CEN8p	Approximately 520kb	FITC	8p11.21
Probe Gap	The gap between two probes is approximately 33,200 kb.			
Cat.Num	FG0012			
Product Name	TYMS/CEN18q FISH Probe			
	Probe Name	Size	Fluorophore	Location
Probe 1	TYMS	Approximately 180kb	Texas Red	18p11.32
Probe 2	CEN18q	Approximately 660kb	FITC	18q11.2
Probe Gap	The gap between two probes is approximately 29,300 kb.			
Cat.Num	FG0025			
Product Name	UBE3A/CEN15q FISH Probe			
	Probe Name	Size	Fluorophore	Location
Probe 1	UBE3A	Approximately 370kb	Texas Red	15q11.2
Probe 2	CEN15q	Approximately 680kb	FITC	15q11.2
Probe Gap	The gap between two probes is approximately 5,700 kb.			
Cat.Num	FG0029			
Product Name	VHL/CEN3q FISH Probe			
	Probe Name	Size	Fluorophore	Location
Probe 1	VHL	Approximately 170kb	Texas Red	3p26-p25
Probe 2	CEN3q	Approximately 500kb	FITC	3q12.1
Probe Gap	The gap between two probes is approximately 85,100 kb.			
Cat.Num	FG0035			
Product Name	YES1/CEN18q FISH Probe			
	Probe Name	Size	Fluorophore	Location
Probe 1	YES1	Approximately 150kb	Texas Red	18p11.32
Probe 2	CEN18q	Approximately 660kb	FITC	18q11.2
Probe Gap	The gap between two probes is approximately 29,200 kb			
Cat.Num	FG0027			
Product Name	1p36.33/CEN1p FISH Probe			
	Probe Name	Size	Fluorophore	Location
Probe 1	1p36.33	Approximately 600kb	Texas Red	1p36.33
Probe 2	CEN1p	Approximately 780kb	FITC	1p13.3
Probe Gap	The gap between two probes is approximately 107,700 kb.			
Cat.Num	FG0028			
Product Name	9q34/CEN9q FISH Probe			
	Probe Name	Size	Fluorophore	Location
Probe 1	9q34	Approximately 330kb	Texas Red	9q34
Probe 2	CEN9q	Approximately 470kb	FITC	9q21
Probe Gap	The gap between two probes is approximately 61,400 kb.			

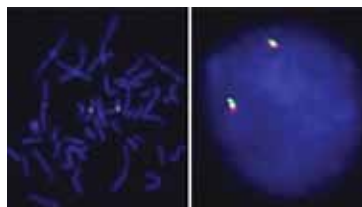


Split FISH Probes

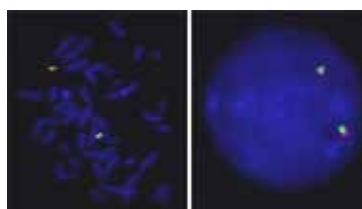
Product Information



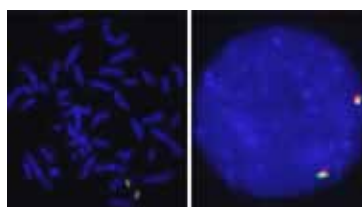
Cat.Num	FS0001			
Product Name	ALK Split FISH Probe			
	Probe Name	Size	Fluorophore	Location
Probe 1	ALK(FITC)	Approximately 770kb	FITC	2p23
Probe 2	ALK(Texas Red)	Approximately 640kb	Texas Red	2p23
Probe Gap	The gap between two probes is approximately 0 kb.			



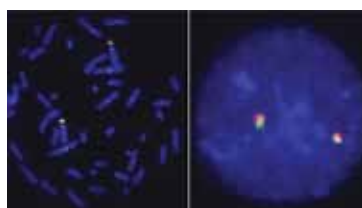
Cat.Num	FS0014			
Product Name	CHOP Split FISH Probe			
	Probe Name	Size	Fluorophore	Location
Probe 1	CHOP(Texas Red)	Approximately 300kb	Texas Red	12q13.3
Probe 2	CHOP(FITC)	Approximately 430kb	FITC	12q13.3
Probe Gap	The gap between two probes is approximately 20 kb.			



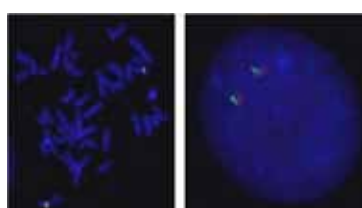
Cat.Num	FS0008			
Product Name	ERG Split FISH Probe			
	Probe Name	Size	Fluorophore	Location
Probe 1	ERG(Texas Red)	Approximately 330kb	Texas Red	21q22.2-22.3
Probe 2	ERG(FITC)	Approximately 540kb	FITC	21q22.2-22.3
Probe Gap	The gap between two probes is approximately 70 kb.			



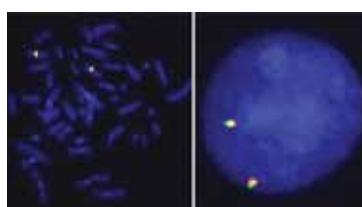
Cat.Num	FS0003			
Product Name	EWSR1 Split FISH Probe			
	Probe Name	Size	Fluorophore	Location
Probe 1	EWSR1(Texas Red)	Approximately 590kb	Texas Red	22q12
Probe 2	EWSR1(FITC)	Approximately 610kb	FITC	22q12
Probe Gap	The gap between two probes is approximately 40 kb.			



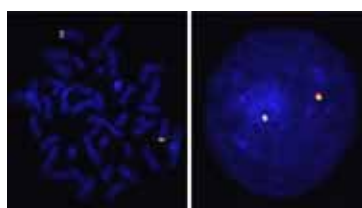
Cat.Num	FS0011			
Product Name	FGFR3 Split FISH Probe			
	Probe Name	Size	Fluorophore	Location
Probe 1	FGFR3(Texas Red)	Approximately 700kb	Texas Red	4p16.3
Probe 2	FGFR3(FITC)	Approximately 500kb	FITC	4p16.3
Probe Gap	The gap between two probes is approximately 30 kb.			



Cat.Num	FS0010			
Product Name	FKHR Split FISH Probe			
	Probe Name	Size	Fluorophore	Location
Probe 1	FKHR(FITC)	Approximately 600kb	FITC	13q14.1
Probe 2	FKHR(Texas Red)	Approximately 510kb	Texas Red	13q14.1
Probe Gap	The gap between two probes is approximately 90 kb			



Cat.Num	FS0012			
Product Name	HEY1 Split FISH Probe			
	Probe Name	Size	Fluorophore	Location
Probe 1	HEY1(Texas Red)	Approximately 600kb	Texas Red	8q21.13
Probe 2	HEY1(FITC)	Approximately 650kb	FITC	8q21.13
Probe Gap	The length of overlap between two probes is approximately 80 kb.			

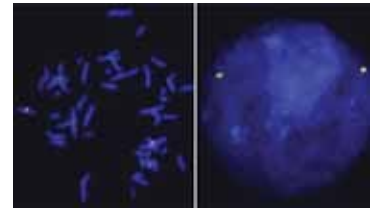


Cat.Num	FS0006			
Product Name	MYC Split FISH Probe			
	Probe Name	Size	Fluorophore	Location
Probe 1	MYC(FITC)	Approximately 400kb	FITC	8q24.21
Probe 2	MYC(Texas Red)	Approximately 340kb	Texas Red	8q24.21
Probe Gap	The gap between two probes is approximately 0 kb.			

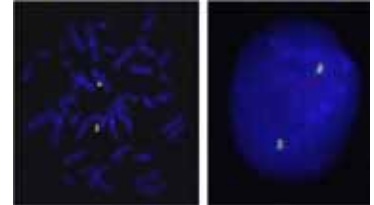
Split FISH Probes

Product Information

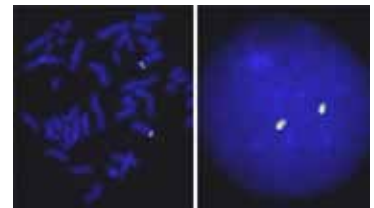
Cat.Num	FS0013			
Product Name	NCOA2 Split FISH Probe			
	Probe Name	Size	Fluorophore	Location
Probe 1	NCOA2(Texas Red)	Approximately 600kb	Texas Red	8q13.3
Probe 2	NCOA2(FITC)	Approximately 650kb	FITC	8q13.3
Probe Gap	The gap between two probes is approximately 20 kb.			



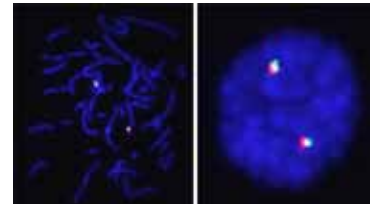
Cat.Num	FS0009			
Product Name	PDGFB Split FISH Probe			
	Probe Name	Size	Fluorophore	Location
Probe 1	PDGFB(Texas Red)	Approximately 470kb	Texas Red	22q13.1
Probe 2	PDGFB(FITC)	Approximately 610kb	FITC	22q13.1
Probe Gap	The gap between two probes is approximately 50 kb			



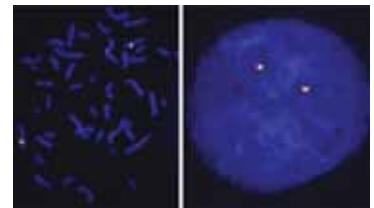
Cat.Num	FS0007			
Product Name	PDGFRB Split FISH Probe			
	Probe Name	Size	Fluorophore	Location
Probe 1	PDGFRB(Texas Red)	Approximately 380kb	Texas Red	5q33
Probe 2	PDGFRB(FITC)	Approximately 560kb	FITC	5q33
Probe Gap	The gap between two probes is approximately 0 kb.			



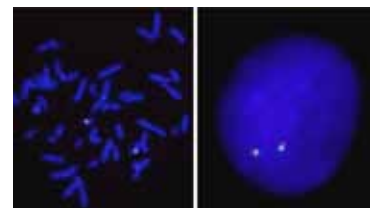
Cat.Num	FS0005			
Product Name	RARA Split FISH Probe			
	Probe Name	Size	Fluorophore	Location
Probe 1	RARA(Texas Red)	Approximately 490kb	Texas Red	17q21.2
Probe 2	RARA(FITC)	Approximately 690kb	FITC	17q21.2
Probe Gap	The gap between two probes is approximately 15 kb.			



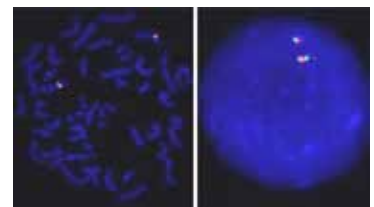
Cat.Num	FS0015			
Product Name	ROS1 Split FISH Probe			
	Probe Name	Size	Fluorophore	Location
Probe 1	ROS1(Texas Red)	Approximately 250kb	Texas Red	6q22.1
Probe 2	ROS1(FITC)	Approximately 720kb	FITC	6q22.1
Probe Gap	The length of overlap between two probes is approximately 60 kb.			



Cat.Num	FS0002			
Product Name	SYT Split FISH Probe			
	Probe Name	Size	Fluorophore	Location
Probe 1	SYT(FITC)	Approximately 700kb	FITC	18q11.2
Probe 2	SYT(Texas Red)	Approximately 500kb	Texas Red	18q11.2
Probe Gap	The gap between two probes is approximately 110 kb.			

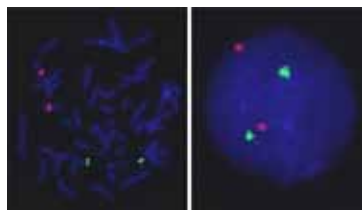


Cat.Num	FS0004			
Product Name	TFE3 Split FISH Probe			
	Probe Name	Size	Fluorophore	Location
Probe 1	TFE3(Texas Red)	Approximately 570kb	Texas Red	Xp11.22
Probe 2	TFE3(FITC)	Approximately 550kb	FITC	Xp11.22
Probe Gap	The gap between two probes is approximately 90 kb.			



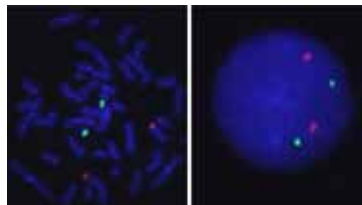
Translocation FISH Probes

Product Information



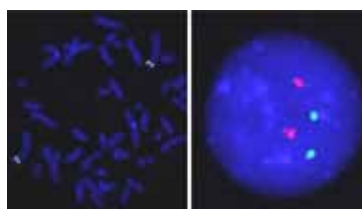
Cat.Num FT0003
Product Name AML1/ETO DY Translocation FISH Probe

	Probe Name	Size	Fluorophore	Location
Probe 1	AML1	Approximately 1340kb	FITC	21q22.12
Probe 2	ETO	Approximately 1110kb	Texas Red	8q21.3



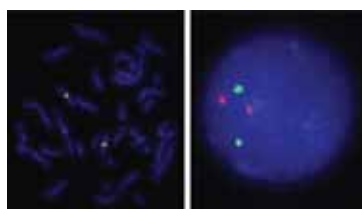
Cat.Num FT0002
Product Name bcr/abl DY Translocation FISH Probe

	Probe Name	Size	Fluorophore	Location
Probe 1	BCR	Approximately 1520kb	FITC	22q11.23
Probe 2	ABL	Approximately 780kb	Texas Red	9q34.1



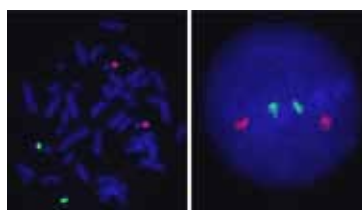
Cat.Num FT0001
Product Name EML4/ALK DY Translocation FISH Probe

	Probe Name	Size	Fluorophore	Location
Probe 1	EML4	Approximately 1130kb	FITC	2p22-p21
Probe 2	ALK	Approximately 700kb	Texas Red	2p23
Probe Gap	The gap between two probes is approximately 13,900 kb.			



Cat.Num FT0005
Product Name HEY1/NCOA2 DY Translocation FISH Probe

	Probe Name	Size	Fluorophore	Location
Probe 1	NCOA2	Approximately 1300kb	Texas Red	8q13.3
Probe 2	HEY1	Approximately 1250kb	FITC	8q21.13
Probe Gap	The gap between two probes is approximately 8,200 kb.			

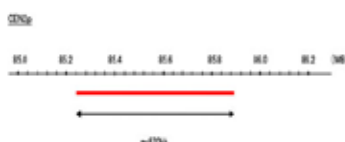
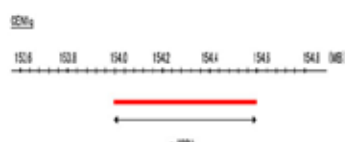


Cat.Num FT0004
Product Name PML/RARA DY Translocation FISH Probe

	Probe Name	Size	Fluorophore	Location
Probe 1	RARA	Approximately 1200kb	FITC	17q21.2
Probe 2	PML	Approximately 540kb	Texas Red	15q24.1

Representative images of normal human cell (lymphocyte) stain with the dual color FISH probe. The left image is chromosomes at metaphase, and the right image is an interphase nucleus.

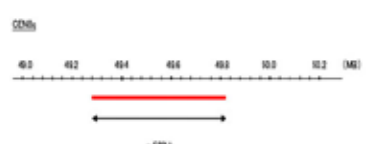
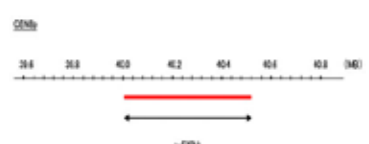
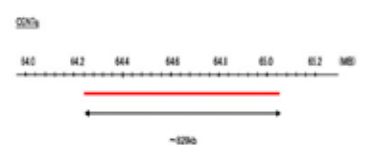
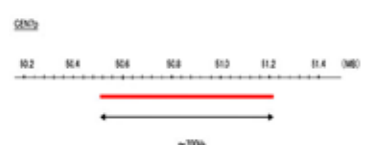
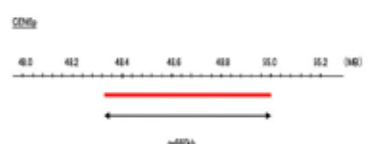
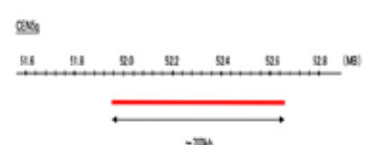
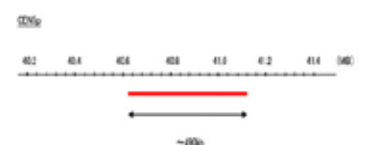
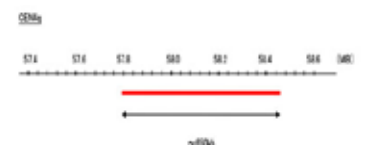
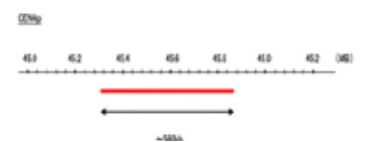
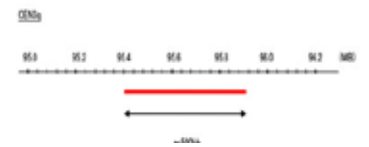
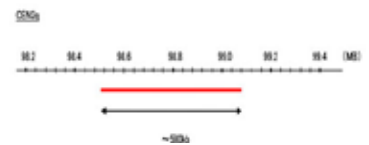
Chromosome FISH Probes



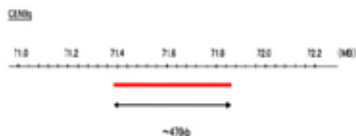
Cat. Num.	Product Name	Fluorophore	Size	Location
FC0001	CEN1p (FITC) FISH Probe	FITC	Approximately 780kb	1p13.3
FC0002	CEN1p (Texas Red) FISH Probe	Texas Red	Approximately 780kb	1p13.3
FC0003	CEN1p (R6G) FISH Probe	R6G	Approximately 780kb	1p13.3
FC0004	CEN1p (DEAC) FISH Probe	DEAC	Approximately 780kb	1p13.3
FC0005	CEN1p (Cy5) FISH Probe	Cy5	Approximately 780kb	1p13.3
FC0006	CEN1q (FITC) FISH Probe	FITC	Approximately 600kb	1q21.3
FC0007	CEN1q (Texas Red) FISH Probe	Texas Red	Approximately 600kb	1q21.3
FC0008	CEN1q (R6G) FISH Probe	R6G	Approximately 600kb	1q21.3
FC0009	CEN1q (DEAC) FISH Probe	DEAC	Approximately 600kb	1q21.3
FC0010	CEN1q (Cy5) FISH Probe	Cy5	Approximately 600kb	1q21.3
FC0011	CEN2p (FITC) FISH Probe	FITC	Approximately 670kb	2p11.2
FC0012	CEN2p (Texas Red) FISH Probe	Texas Red	Approximately 670kb	2p11.2
FC0013	CEN2p (R6G) FISH Probe	R6G	Approximately 670kb	2p11.2
FC0014	CEN2p (DEAC) FISH Probe	DEAC	Approximately 670kb	2p11.2
FC0015	CEN2p (Cy5) FISH Probe	Cy5	Approximately 670kb	2p11.2

Chromosome FISH Probes

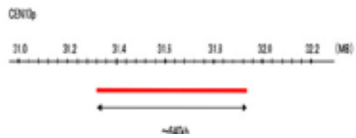
Cat. Num.	Product Name	Fluorophore	Size	Location
FC0016	CEN2q (FITC) FISH Probe	FITC	Approximately 580kb	2q11.2
FC0017	CEN2q (Texas Red) FISH Probe	Texas Red	Approximately 580kb	2q11.2
FC0018	CEN2q (R6G) FISH Probe	R6G	Approximately 580kb	2q11.2
FC0019	CEN2q (DEAC) FISH Probe	DEAC	Approximately 580kb	2q11.2
FC0020	CEN2q (Cy5) FISH Probe	Cy5	Approximately 580kb	2q11.2
FC0021	CEN3q (FITC) FISH Probe	FITC	Approximately 500kb	3q12.1
FC0022	CEN3q (Texas Red) FISH Probe	Texas Red	Approximately 500kb	3q12.1
FC0023	CEN3q (R6G) FISH Probe	R6G	Approximately 500kb	3q12.1
FC0024	CEN3q (DEAC) FISH Probe	DEAC	Approximately 500kb	3q12.1
FC0025	CEN3q (Cy5) FISH Probe	Cy5	Approximately 500kb	3q12.1
FC0026	CEN4p (FITC) FISH Probe	FITC	Approximately 660kb	4p13
FC0027	CEN4p (Texas Red) FISH Probe	Texas Red	Approximately 660kb	4p13
FC0028	CEN4p (R6G) FISH Probe	R6G	Approximately 660kb	4p13
FC0029	CEN4p (DEAC) FISH Probe	DEAC	Approximately 660kb	4p13
FC0030	CEN4p (Cy5) FISH Probe	Cy5	Approximately 660kb	4p13
FC0031	CEN4q (FITC) FISH Probe	FITC	Approximately 650kb	4q12
FC0032	CEN4q (Texas Red) FISH Probe	Texas Red	Approximately 650kb	4q12
FC0033	CEN4q (R6G) FISH Probe	R6G	Approximately 650kb	4q12
FC0034	CEN4q (DEAC) FISH Probe	DEAC	Approximately 650kb	4q12
FC0035	CEN4q (Cy5) FISH Probe	Cy5	Approximately 650kb	4q12
FC0036	CEN5p (FITC) FISH Probe	FITC	Approximately 490kb	5p12
FC0037	CEN5p (Texas Red) FISH Probe	Texas Red	Approximately 490kb	5p12
FC0038	CEN5p (R6G) FISH Probe	R6G	Approximately 490kb	5p12
FC0039	CEN5p (DEAC) FISH Probe	DEAC	Approximately 490kb	5p12
FC0040	CEN5p (Cy5) FISH Probe	Cy5	Approximately 490kb	5p12
FC0041	CEN5q (FITC) FISH Probe	FITC	Approximately 700kb	5q11.2
FC0042	CEN5q (Texas Red) FISH Probe	Texas Red	Approximately 700kb	5q11.2
FC0043	CEN5q (R6G) FISH Probe	R6G	Approximately 700kb	5q11.2
FC0044	CEN5q (DEAC) FISH Probe	DEAC	Approximately 700kb	5q11.2
FC0045	CEN5q (Cy5) FISH Probe	Cy5	Approximately 700kb	5q11.2
FC0046	CEN6p (FITC) FISH Probe	FITC	Approximately 660kb	6p12.1
FC0047	CEN6p (Texas Red) FISH Probe	Texas Red	Approximately 660kb	6p12.1
FC0048	CEN6p (R6G) FISH Probe	R6G	Approximately 660kb	6p12.1
FC0049	CEN6p (DEAC) FISH Probe	DEAC	Approximately 660kb	6p12.1
FC0050	CEN6p (Cy5) FISH Probe	Cy5	Approximately 660kb	6p12.1
FC0051	CEN7p (FITC) FISH Probe	FITC	Approximately 700kb	7p12.1
FC0052	CEN7p (Texas Red) FISH Probe	Texas Red	Approximately 700kb	7p12.1
FC0053	CEN7p (R6G) FISH Probe	R6G	Approximately 700kb	7p12.1
FC0054	CEN7p (DEAC) FISH Probe	DEAC	Approximately 700kb	7p12.1
FC0055	CEN7p (Cy5) FISH Probe	Cy5	Approximately 700kb	7p12.1
FC0056	CEN7q (FITC) FISH Probe	FITC	Approximately 820kb	7q11.21
FC0057	CEN7q (Texas Red) FISH Probe	Texas Red	Approximately 820kb	7q11.21
FC0058	CEN7q (R6G) FISH Probe	R6G	Approximately 820kb	7q11.21
FC0059	CEN7q (DEAC) FISH Probe	DEAC	Approximately 820kb	7q11.21
FC0060	CEN7q (Cy5) FISH Probe	Cy5	Approximately 820kb	7q11.21
FC0061	CEN8p (FITC) FISH Probe	FITC	Approximately 520kb	8p11.21
FC0062	CEN8p (Texas Red) FISH Probe	Texas Red	Approximately 520kb	8p11.21
FC0063	CEN8p (R6G) FISH Probe	R6G	Approximately 520kb	8p11.21
FC0064	CEN8p (DEAC) FISH Probe	DEAC	Approximately 520kb	8p11.21
FC0065	CEN8p (Cy5) FISH Probe	Cy5	Approximately 520kb	8p11.21
FC0066	CEN8q (FITC) FISH Probe	FITC	Approximately 520kb	8q11.21
FC0067	CEN8q (Texas Red) FISH Probe	Texas Red	Approximately 520kb	8q11.21
FC0068	CEN8q (R6G) FISH Probe	R6G	Approximately 520kb	8q11.21
FC0069	CEN8q (DEAC) FISH Probe	DEAC	Approximately 520kb	8q11.21
FC0070	CEN8q (Cy5) FISH Probe	Cy5	Approximately 520kb	8q11.21



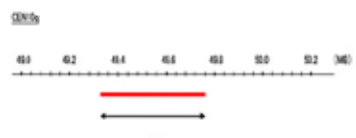
Chromosome FISH Probes



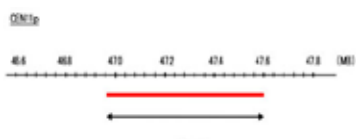
Cat. Num.	Product Name	Fluorophore	Size	Location
FC0071	CEN9q (FITC) FISH Probe	FITC	Approximately 470kb	9q21
FC0072	CEN9q (Texas Red) FISH Probe	Texas Red	Approximately 470kb	9q21
FC0073	CEN9q (R6G) FISH Probe	R6G	Approximately 470kb	9q21
FC0074	CEN9q (DEAC) FISH Probe	DEAC	Approximately 470kb	9q21
FC0075	CEN9q (Cy5) FISH Probe	Cy5	Approximately 470kb	9q21



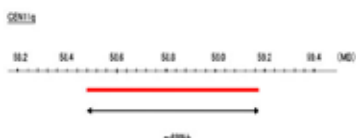
FC0086	CEN10p (FITC) FISH Probe	FITC	Approximately 640kb	10p11.22
FC0087	CEN10p (Texas Red) FISH Probe	Texas Red	Approximately 640kb	10p11.22
FC0088	CEN10p (R6G) FISH Probe	R6G	Approximately 640kb	10p11.22
FC0089	CEN10p (DEAC) FISH Probe	DEAC	Approximately 640kb	10p11.22
FC0090	CEN10p (Cy5) FISH Probe	Cy5	Approximately 640kb	10p11.22



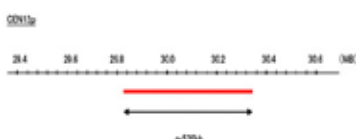
FC0091	CEN10q (FITC) FISH Probe	FITC	Approximately 450kb	10q11.21
FC0092	CEN10q (Texas Red) FISH Probe	Texas Red	Approximately 450kb	10q11.21
FC0093	CEN10q (R6G) FISH Probe	R6G	Approximately 450kb	10q11.21
FC0094	CEN10q (DEAC) FISH Probe	DEAC	Approximately 450kb	10q11.21
FC0095	CEN10q (Cy5) FISH Probe	Cy5	Approximately 450kb	10q11.21



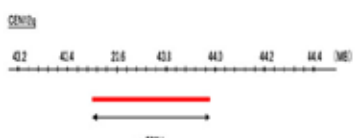
FC0096	CEN11p (FITC) FISH Probe	FITC	Approximately 630kb	11p11.12
FC0097	CEN11p (Texas Red) FISH Probe	Texas Red	Approximately 630kb	11p11.12
FC0098	CEN11p (R6G) FISH Probe	R6G	Approximately 630kb	11p11.12
FC0099	CEN11p (DEAC) FISH Probe	DEAC	Approximately 630kb	11p11.12
FC0100	CEN11p (Cy5) FISH Probe	Cy5	Approximately 630kb	11p11.12



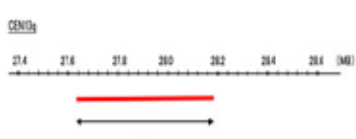
FC0101	CEN11q (FITC) FISH Probe	FITC	Approximately 680kb	11q12.1
FC0102	CEN11q (Texas Red) FISH Probe	Texas Red	Approximately 680kb	11q12.1
FC0103	CEN11q (R6G) FISH Probe	R6G	Approximately 680kb	11q12.1
FC0104	CEN11q (DEAC) FISH Probe	DEAC	Approximately 680kb	11q12.1
FC0105	CEN11q (Cy5) FISH Probe	Cy5	Approximately 680kb	11q12.1



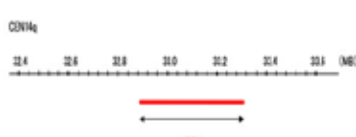
FC0106	CEN12p (FITC) FISH Probe	FITC	Approximately 530kb	12p11.22
FC0107	CEN12p (Texas Red) FISH Probe	Texas Red	Approximately 530kb	12p11.22
FC0108	CEN12p (R6G) FISH Probe	R6G	Approximately 530kb	12p11.22
FC0109	CEN12p (DEAC) FISH Probe	DEAC	Approximately 530kb	12p11.22
FC0110	CEN12p (Cy5) FISH Probe	Cy5	Approximately 530kb	12p11.22



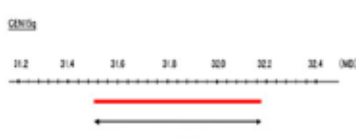
FC0111	CEN12q (FITC) FISH Probe	FITC	Approximately 580kb	12q12
FC0112	CEN12q (Texas Red) FISH Probe	Texas Red	Approximately 580kb	12q12
FC0113	CEN12q (R6G) FISH Probe	R6G	Approximately 580kb	12q12
FC0114	CEN12q (DEAC) FISH Probe	DEAC	Approximately 580kb	12q12
FC0115	CEN12q (Cy5) FISH Probe	Cy5	Approximately 580kb	12q12



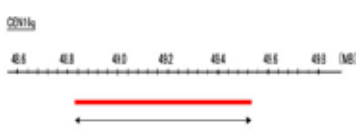
FC0116	CEN13q (FITC) FISH Probe	FITC	Approximately 550kb	13q12.11
FC0117	CEN13q (Texas Red) FISH Probe	Texas Red	Approximately 550kb	13q12.11
FC0118	CEN13q (R6G) FISH Probe	R6G	Approximately 550kb	13q12.11
FC0119	CEN13q (DEAC) FISH Probe	DEAC	Approximately 550kb	13q12.11
FC0120	CEN13q (Cy5) FISH Probe	Cy5	Approximately 550kb	13q12.11



FC0121	CEN14q (FITC) FISH Probe	FITC	Approximately 400kb	14q11.2
FC0122	CEN14q (Texas Red) FISH Probe	Texas Red	Approximately 400kb	14q11.2
FC0123	CEN14q (R6G) FISH Probe	R6G	Approximately 400kb	14q11.2
FC0124	CEN14q (DEAC) FISH Probe	DEAC	Approximately 400kb	14q11.2
FC0125	CEN14q (Cy5) FISH Probe	Cy5	Approximately 400kb	14q11.2



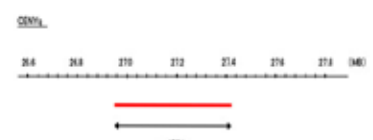
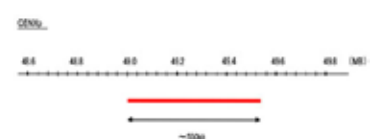
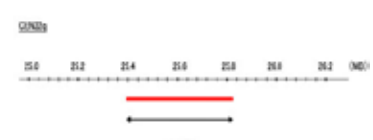
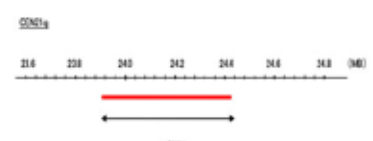
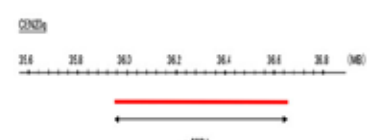
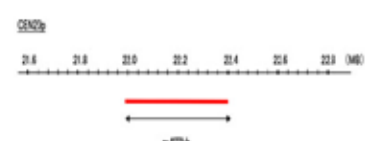
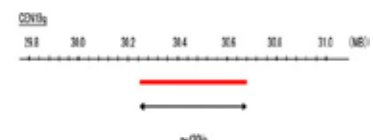
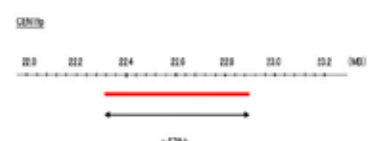
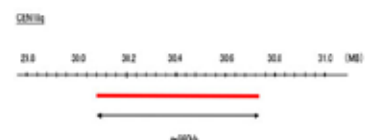
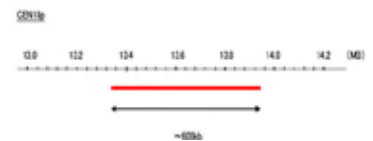
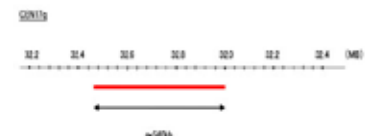
FC0126	CEN15q (FITC) FISH Probe	FITC	Approximately 680kb	15q11.2
FC0127	CEN15q (Texas Red) FISH Probe	Texas Red	Approximately 680kb	15q11.2
FC0128	CEN15q (R6G) FISH Probe	R6G	Approximately 680kb	15q11.2
FC0129	CEN15q (DEAC) FISH Probe	DEAC	Approximately 680kb	15q11.2
FC0130	CEN15q (Cy5) FISH Probe	Cy5	Approximately 680kb	15q11.2



FC0131	CEN16q (FITC) FISH Probe	FITC	Approximately 700kb	16q12.1
FC0132	CEN16q (Texas Red) FISH Probe	Texas Red	Approximately 700kb	16q12.1
FC0133	CEN16q (R6G) FISH Probe	R6G	Approximately 700kb	16q12.1
FC0134	CEN16q (DEAC) FISH Probe	DEAC	Approximately 700kb	16q12.1
FC0135	CEN16q (Cy5) FISH Probe	Cy5	Approximately 700kb	16q12.1

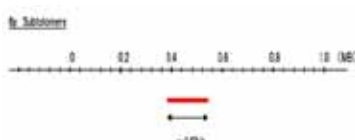
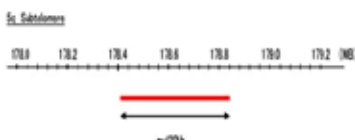
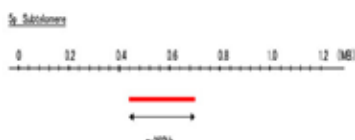
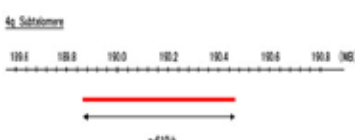
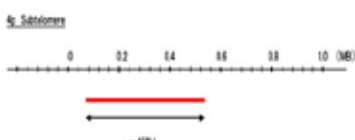
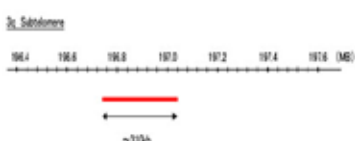
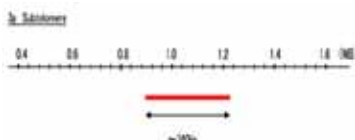
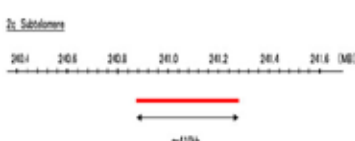
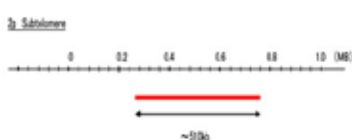
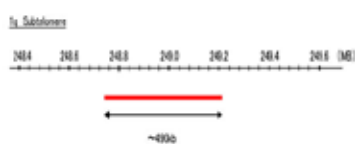
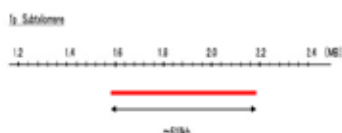
Chromosome FISH Probes

Cat. Num.	Product Name	Fluorophore	Size	Location
FC0136	CEN17q (FITC) FISH Probe	FITC	Approximately 540kb	17q11.2
FC0137	CEN17q (Texas Red) FISH Probe	Texas Red	Approximately 540kb	17q11.2
FC0138	CEN17q (R6G) FISH Probe	R6G	Approximately 540kb	17q11.2
FC0139	CEN17q (DEAC) FISH Probe	DEAC	Approximately 540kb	17q11.2
FC0140	CEN17q (Cy5) FISH Probe	Cy5	Approximately 540kb	17q11.2
FC0141	CEN18p (FITC) FISH Probe	FITC	Approximately 600kb	18p11.21
FC0142	CEN18p (Texas Red) FISH Probe	Texas Red	Approximately 600kb	18p11.21
FC0143	CEN18p (R6G) FISH Probe	R6G	Approximately 600kb	18p11.21
FC0144	CEN18p (DEAC) FISH Probe	DEAC	Approximately 600kb	18p11.21
FC0145	CEN18p (Cy5) FISH Probe	Cy5	Approximately 600kb	18p11.21
FC0146	CEN18q (FITC) FISH Probe	FITC	Approximately 660kb	18q11.2
FC0147	CEN18q (Texas Red) FISH Probe	Texas Red	Approximately 660kb	18q11.2
FC0148	CEN18q (R6G) FISH Probe	R6G	Approximately 660kb	18q11.2
FC0149	CEN18q (DEAC) FISH Probe	DEAC	Approximately 660kb	18q11.2
FC0150	CEN18q (Cy5) FISH Probe	Cy5	Approximately 660kb	18q11.2
FC0151	CEN19p (FITC) FISH Probe	FITC	Approximately 570kb	19p13.11
FC0152	CEN19p (Texas Red) FISH Probe	Texas Red	Approximately 570kb	19p13.11
FC0153	CEN19p (R6G) FISH Probe	R6G	Approximately 570kb	19p13.11
FC0154	CEN19p (DEAC) FISH Probe	DEAC	Approximately 570kb	19p13.11
FC0155	CEN19p (Cy5) FISH Probe	Cy5	Approximately 570kb	19p13.11
FC0156	CEN19q (FITC) FISH Probe	FITC	Approximately 430kb	19q12
FC0157	CEN19q (Texas Red) FISH Probe	Texas Red	Approximately 430kb	19q12
FC0158	CEN19q (R6G) FISH Probe	R6G	Approximately 430kb	19q12
FC0159	CEN19q (DEAC) FISH Probe	DEAC	Approximately 430kb	19q12
FC0160	CEN19q (Cy5) FISH Probe	Cy5	Approximately 430kb	19q12
FC0161	CEN20p (FITC) FISH Probe	FITC	Approximately 400kb	20p11.21
FC0162	CEN20p (Texas Red) FISH Probe	Texas Red	Approximately 400kb	20p11.21
FC0163	CEN20p (R6G) FISH Probe	R6G	Approximately 400kb	20p11.21
FC0164	CEN20p (DEAC) FISH Probe	DEAC	Approximately 400kb	20p11.21
FC0165	CEN20p (Cy5) FISH Probe	Cy5	Approximately 400kb	20p11.21
FC0166	CEN20q (FITC) FISH Probe	FITC	Approximately 680kb	20q11.22
FC0167	CEN20q (Texas Red) FISH Probe	Texas Red	Approximately 680kb	20q11.22
FC0168	CEN20q (R6G) FISH Probe	R6G	Approximately 680kb	20q11.22
FC0169	CEN20q (DEAC) FISH Probe	DEAC	Approximately 680kb	20q11.22
FC0170	CEN20q (Cy5) FISH Probe	Cy5	Approximately 680kb	20q11.22
FC0171	CEN21q (FITC) FISH Probe	FITC	Approximately 520kb	21q11.2
FC0172	CEN21q (Texas Red) FISH Probe	Texas Red	Approximately 520kb	21q11.2
FC0173	CEN21q (R6G) FISH Probe	R6G	Approximately 520kb	21q11.2
FC0174	CEN21q (DEAC) FISH Probe	DEAC	Approximately 520kb	21q11.2
FC0175	CEN21q (Cy5) FISH Probe	Cy5	Approximately 520kb	21q11.2
FC0176	CEN22q (FITC) FISH Probe	FITC	Approximately 450kb	22q11.22
FC0177	CEN22q (Texas Red) FISH Probe	Texas Red	Approximately 450kb	22q11.22
FC0178	CEN22q (R6G) FISH Probe	R6G	Approximately 450kb	22q11.22
FC0179	CEN22q (DEAC) FISH Probe	DEAC	Approximately 450kb	22q11.22
FC0180	CEN22q (Cy5) FISH Probe	Cy5	Approximately 450kb	22q11.22
FC0076	CENXp (FITC) FISH Probe	FITC	Approximately 640kb	Xp11.22
FC0077	CENXp (Texas Red) FISH Probe	Texas Red	Approximately 640kb	Xp11.22
FC0078	CENXp (R6G) FISH Probe	R6G	Approximately 640kb	Xp11.22
FC0079	CENXp (DEAC) FISH Probe	DEAC	Approximately 640kb	Xp11.22
FC0080	CENXp (Cy5) FISH Probe	Cy5	Approximately 640kb	Xp11.22
FC0081	CENYq (FITC) FISH Probe	FITC	Approximately 470kb	Yq11.221
FC0082	CENYq (Texas Red) FISH Probe	Texas Red	Approximately 470kb	Yq11.221
FC0083	CENYq (R6G) FISH Probe	R6G	Approximately 470kb	Yq11.221
FC0084	CENYq (DEAC) FISH Probe	DEAC	Approximately 470kb	Yq11.221
FC0085	CENYq (Cy5) FISH Probe	Cy5	Approximately 470kb	Yq11.221



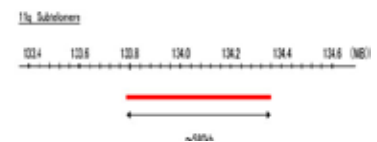
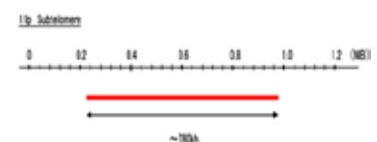
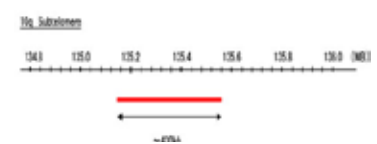
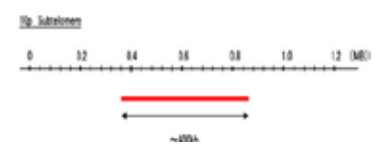
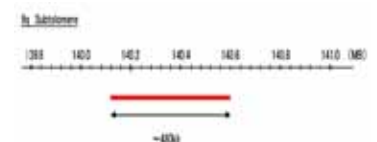
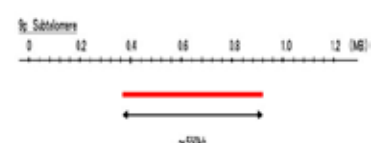
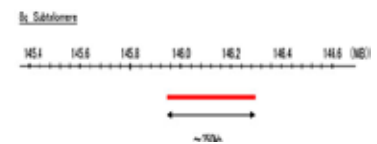
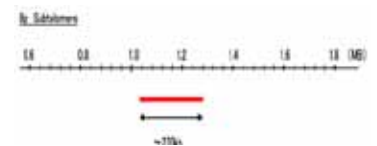
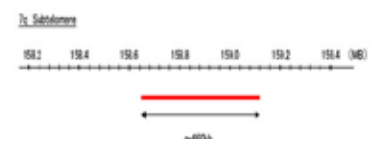
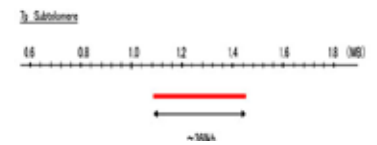
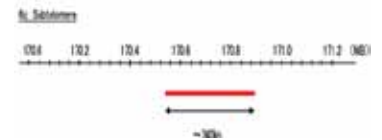
Subtelomere FISH Probes

Cat. Num.	Product Name	Fluorophore	Size	Location
FE0001	1p Subtelomere(FITC) FISH Probe	FITC	Approximately 610kb	1p Subtelomere
FE0002	1p Subtelomere(Texas Red) FISH Probe	Texas Red	Approximately 610kb	1p Subtelomere
FE0003	1p Subtelomere(R6G) FISH Probe	R6G	Approximately 610kb	1p Subtelomere
FE0004	1p Subtelomere(DEAC) FISH Probe	DEAC	Approximately 610kb	1p Subtelomere
FE0005	1p Subtelomere(Cy5) FISH Probe	Cy5	Approximately 610kb	1p Subtelomere
FE0006	1q Subtelomere(FITC) FISH Probe	FITC	Approximately 490kb	1q Subtelomere
FE0007	1q Subtelomere(Texas Red) FISH Probe	Texas Red	Approximately 490kb	1q Subtelomere
FE0008	1q Subtelomere(R6G) FISH Probe	R6G	Approximately 490kb	1q Subtelomere
FE0009	1q Subtelomere(DEAC) FISH Probe	DEAC	Approximately 490kb	1q Subtelomere
FE0010	1q Subtelomere(Cy5) FISH Probe	Cy5	Approximately 490kb	1q Subtelomere
FE0011	2p Subtelomere(FITC) FISH Probe	FITC	Approximately 510kb	2p Subtelomere
FE0012	2p Subtelomere(Texas Red) FISH Probe	Texas Red	Approximately 510kb	2p Subtelomere
FE0013	2p Subtelomere(R6G) FISH Probe	R6G	Approximately 510kb	2p Subtelomere
FE0014	2p Subtelomere(DEAC) FISH Probe	DEAC	Approximately 510kb	2p Subtelomere
FE0015	2p Subtelomere(Cy5) FISH Probe	Cy5	Approximately 510kb	2p Subtelomere
FE0016	2q Subtelomere(FITC) FISH Probe	FITC	Approximately 410kb	2q Subtelomere
FE0017	2q Subtelomere(Texas Red) FISH Probe	Texas Red	Approximately 410kb	2q Subtelomere
FE0018	2q Subtelomere(R6G) FISH Probe	R6G	Approximately 410kb	2q Subtelomere
FE0019	2q Subtelomere(DEAC) FISH Probe	DEAC	Approximately 410kb	2q Subtelomere
FE0020	2q Subtelomere(Cy5) FISH Probe	Cy5	Approximately 410kb	2q Subtelomere
FE0021	3p Subtelomere(FITC) FISH Probe	FITC	Approximately 340kb	3p Subtelomere
FE0022	3p Subtelomere(Texas Red) FISH Probe	Texas Red	Approximately 340kb	3p Subtelomere
FE0023	3p Subtelomere(R6G) FISH Probe	R6G	Approximately 340kb	3p Subtelomere
FE0024	3p Subtelomere(DEAC) FISH Probe	DEAC	Approximately 340kb	3p Subtelomere
FE0025	3p Subtelomere(Cy5) FISH Probe	Cy5	Approximately 340kb	3p Subtelomere
FE0026	3q Subtelomere(FITC) FISH Probe	FITC	Approximately 310kb	3q Subtelomere
FE0027	3q Subtelomere(Texas Red) FISH Probe	Texas Red	Approximately 310kb	3q Subtelomere
FE0028	3q Subtelomere(R6G) FISH Probe	R6G	Approximately 310kb	3q Subtelomere
FE0029	3q Subtelomere(DEAC) FISH Probe	DEAC	Approximately 310kb	3q Subtelomere
FE0030	3q Subtelomere(Cy5) FISH Probe	Cy5	Approximately 310kb	3q Subtelomere
FE0031	4p Subtelomere(FITC) FISH Probe	FITC	Approximately 450kb	4p Subtelomere
FE0032	4p Subtelomere(Texas Red) FISH Probe	Texas Red	Approximately 450kb	4p Subtelomere
FE0033	4p Subtelomere(R6G) FISH Probe	R6G	Approximately 450kb	4p Subtelomere
FE0034	4p Subtelomere(DEAC) FISH Probe	DEAC	Approximately 450kb	4p Subtelomere
FE0035	4p Subtelomere(Cy5) FISH Probe	Cy5	Approximately 450kb	4p Subtelomere
FE0036	4q Subtelomere(FITC) FISH Probe	FITC	Approximately 610kb	4q Subtelomere
FE0037	4q Subtelomere(Texas Red) FISH Probe	Texas Red	Approximately 610kb	4q Subtelomere
FE0038	4q Subtelomere(R6G) FISH Probe	R6G	Approximately 610kb	4q Subtelomere
FE0039	4q Subtelomere(DEAC) FISH Probe	DEAC	Approximately 610kb	4q Subtelomere
FE0040	4q Subtelomere(Cy5) FISH Probe	Cy5	Approximately 610kb	4q Subtelomere
FE0041	5p Subtelomere(FITC) FISH Probe	FITC	Approximately 260kb	5p Subtelomere
FE0042	5p Subtelomere(Texas Red) FISH Probe	Texas Red	Approximately 260kb	5p Subtelomere
FE0043	5p Subtelomere(R6G) FISH Probe	R6G	Approximately 260kb	5p Subtelomere
FE0044	5p Subtelomere(DEAC) FISH Probe	DEAC	Approximately 260kb	5p Subtelomere
FE0045	5p Subtelomere(Cy5) FISH Probe	Cy5	Approximately 260kb	5p Subtelomere
FE0046	5q Subtelomere(FITC) FISH Probe	FITC	Approximately 420kb	5q Subtelomere
FE0047	5q Subtelomere(Texas Red) FISH Probe	Texas Red	Approximately 420kb	5q Subtelomere
FE0048	5q Subtelomere(R6G) FISH Probe	R6G	Approximately 420kb	5q Subtelomere
FE0049	5q Subtelomere(DEAC) FISH Probe	DEAC	Approximately 420kb	5q Subtelomere
FE0050	5q Subtelomere(Cy5) FISH Probe	Cy5	Approximately 420kb	5q Subtelomere
FE0051	6p Subtelomere(FITC) FISH Probe	FITC	Approximately 140kb	6p Subtelomere
FE0052	6p Subtelomere(Texas Red) FISH Probe	Texas Red	Approximately 140kb	6p Subtelomere
FE0053	6p Subtelomere(R6G) FISH Probe	R6G	Approximately 140kb	6p Subtelomere
FE0054	6p Subtelomere(DEAC) FISH Probe	DEAC	Approximately 140kb	6p Subtelomere
FE0055	6p Subtelomere(Cy5) FISH Probe	Cy5	Approximately 140kb	6p Subtelomere

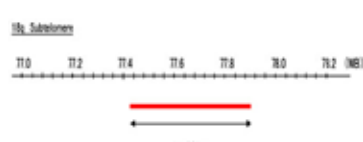
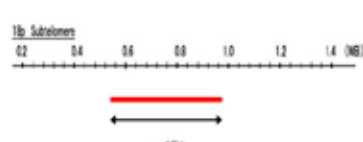
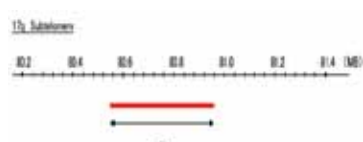
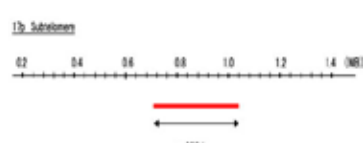
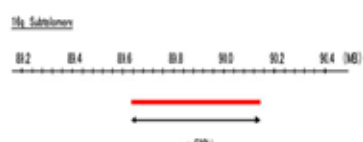
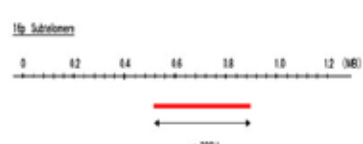
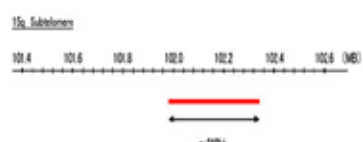
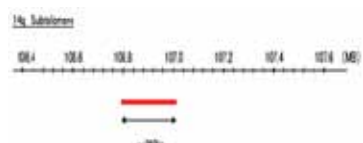
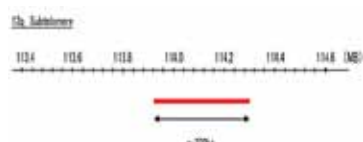
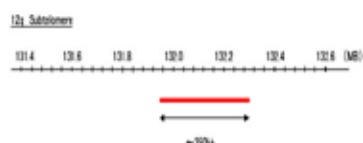
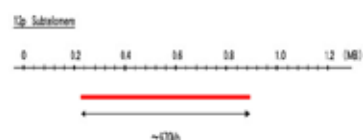


Subtelomere FISH Probes

Cat. Num.	Product Name	Fluorophore	Size	Location
FE0056	6q Subtelomere(FITC) FISH Probe	FITC	Approximately 340kb	6q Subtelomere
FE0057	6q Subtelomere(Texas Red) FISH Probe	Texas Red	Approximately 340kb	6q Subtelomere
FE0058	6q Subtelomere(R6G) FISH Probe	R6G	Approximately 340kb	6q Subtelomere
FE0059	6q Subtelomere(DEAC) FISH Probe	DEAC	Approximately 340kb	6q Subtelomere
FE0060	6q Subtelomere(Cy5) FISH Probe	Cy5	Approximately 340kb	6q Subtelomere
FE0061	7p Subtelomere(FITC) FISH Probe	FITC	Approximately 360kb	7p Subtelomere
FE0062	7p Subtelomere(Texas Red) FISH Probe	Texas Red	Approximately 360kb	7p Subtelomere
FE0063	7p Subtelomere(R6G) FISH Probe	R6G	Approximately 360kb	7p Subtelomere
FE0064	7p Subtelomere(DEAC) FISH Probe	DEAC	Approximately 360kb	7p Subtelomere
FE0065	7p Subtelomere(Cy5) FISH Probe	Cy5	Approximately 360kb	7p Subtelomere
FE0066	7q Subtelomere(FITC) FISH Probe	FITC	Approximately 460kb	7q Subtelomere
FE0067	7q Subtelomere(Texas Red) FISH Probe	Texas Red	Approximately 460kb	7q Subtelomere
FE0068	7q Subtelomere(R6G) FISH Probe	R6G	Approximately 460kb	7q Subtelomere
FE0069	7q Subtelomere(DEAC) FISH Probe	DEAC	Approximately 460kb	7q Subtelomere
FE0070	7q Subtelomere(Cy5) FISH Probe	Cy5	Approximately 460kb	7q Subtelomere
FE0071	8p Subtelomere(FITC) FISH Probe	FITC	Approximately 270kb	8p Subtelomere
FE0072	8p Subtelomere(Texas Red) FISH Probe	Texas Red	Approximately 270kb	8p Subtelomere
FE0073	8p Subtelomere(R6G) FISH Probe	R6G	Approximately 270kb	8p Subtelomere
FE0074	8p Subtelomere(DEAC) FISH Probe	DEAC	Approximately 270kb	8p Subtelomere
FE0075	8p Subtelomere(Cy5) FISH Probe	Cy5	Approximately 270kb	8p Subtelomere
FE0076	8q Subtelomere(FITC) FISH Probe	FITC	Approximately 350kb	8q Subtelomere
FE0077	8q Subtelomere(Texas Red) FISH Probe	Texas Red	Approximately 350kb	8q Subtelomere
FE0078	8q Subtelomere(R6G) FISH Probe	R6G	Approximately 350kb	8q Subtelomere
FE0079	8q Subtelomere(DEAC) FISH Probe	DEAC	Approximately 350kb	8q Subtelomere
FE0080	8q Subtelomere(Cy5) FISH Probe	Cy5	Approximately 350kb	8q Subtelomere
FE0081	9p Subtelomere(FITC) FISH Probe	FITC	Approximately 550kb	9p Subtelomere
FE0082	9p Subtelomere(Texas Red) FISH Probe	Texas Red	Approximately 550kb	9p Subtelomere
FE0083	9p Subtelomere(R6G) FISH Probe	R6G	Approximately 550kb	9p Subtelomere
FE0084	9p Subtelomere(DEAC) FISH Probe	DEAC	Approximately 550kb	9p Subtelomere
FE0085	9p Subtelomere(Cy5) FISH Probe	Cy5	Approximately 550kb	9p Subtelomere
FE0086	9q Subtelomere(FITC) FISH Probe	FITC	Approximately 480kb	9q Subtelomere
FE0087	9q Subtelomere(Texas Red) FISH Probe	Texas Red	Approximately 480kb	9q Subtelomere
FE0088	9q Subtelomere(R6G) FISH Probe	R6G	Approximately 480kb	9q Subtelomere
FE0089	9q Subtelomere(DEAC) FISH Probe	DEAC	Approximately 480kb	9q Subtelomere
FE0090	9q Subtelomere(Cy5) FISH Probe	Cy5	Approximately 480kb	9q Subtelomere
FE0091	10p Subtelomere(FITC) FISH Probe	FITC	Approximately 400kb	10p Subtelomere
FE0092	10p Subtelomere(Texas Red) FISH Probe	Texas Red	Approximately 400kb	10p Subtelomere
FE0093	10p Subtelomere(R6G) FISH Probe	R6G	Approximately 400kb	10p Subtelomere
FE0094	10p Subtelomere(DEAC) FISH Probe	DEAC	Approximately 400kb	10p Subtelomere
FE0095	10p Subtelomere(Cy5) FISH Probe	Cy5	Approximately 400kb	10p Subtelomere
FE0096	10q Subtelomere(FITC) FISH Probe	FITC	Approximately 430kb	10q Subtelomere
FE0097	10q Subtelomere(Texas Red) FISH Probe	Texas Red	Approximately 430kb	10q Subtelomere
FE0098	10q Subtelomere(R6G) FISH Probe	R6G	Approximately 430kb	10q Subtelomere
FE0099	10q Subtelomere(DEAC) FISH Probe	DEAC	Approximately 430kb	10q Subtelomere
FE0100	10q Subtelomere(Cy5) FISH Probe	Cy5	Approximately 430kb	10q Subtelomere
FE0101	11p Subtelomere(FITC) FISH Probe	FITC	Approximately 780kb	11p Subtelomere
FE0102	11p Subtelomere(Texas Red) FISH Probe	Texas Red	Approximately 780kb	11p Subtelomere
FE0103	11p Subtelomere(R6G) FISH Probe	R6G	Approximately 780kb	11p Subtelomere
FE0104	11p Subtelomere(DEAC) FISH Probe	DEAC	Approximately 780kb	11p Subtelomere
FE0105	11p Subtelomere(Cy5) FISH Probe	Cy5	Approximately 780kb	11p Subtelomere
FE0106	11q Subtelomere(FITC) FISH Probe	FITC	Approximately 580kb	11q Subtelomere
FE0107	11q Subtelomere(Texas Red) FISH Probe	Texas Red	Approximately 580kb	11q Subtelomere
FE0108	11q Subtelomere(R6G) FISH Probe	R6G	Approximately 580kb	11q Subtelomere
FE0109	11q Subtelomere(DEAC) FISH Probe	DEAC	Approximately 580kb	11q Subtelomere
FE0110	11q Subtelomere(Cy5) FISH Probe	Cy5	Approximately 580kb	11q Subtelomere



Subtelomere FISH Probes

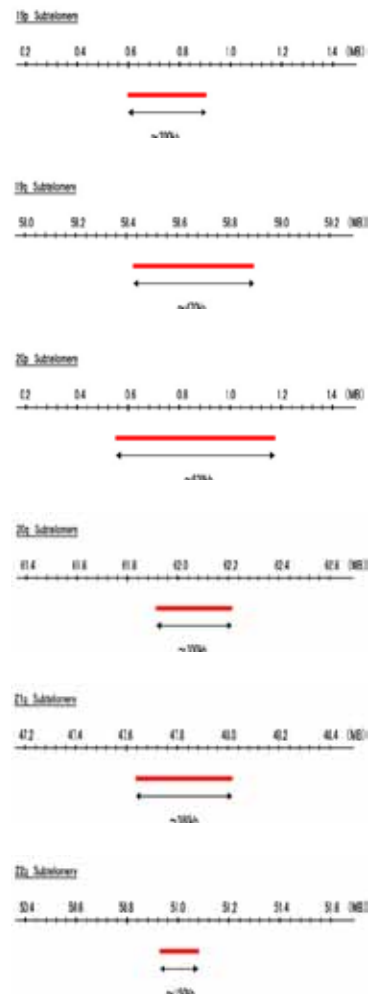


Cat. Num.	Product Name	Fluorophore	Size	Location
FE0111	12p Subtelomere(FITC) FISH Probe	FITC	Approximately 670kb	12p Subtelomere
FE0112	12p Subtelomere(Texas Red) FISH Probe	Texas Red	Approximately 670kb	12p Subtelomere
FE0113	12p Subtelomere(R6G) FISH Probe	R6G	Approximately 670kb	12p Subtelomere
FE0114	12p Subtelomere(DEAC) FISH Probe	DEAC	Approximately 670kb	12p Subtelomere
FE0115	12p Subtelomere(Cy5) FISH Probe	Cy5	Approximately 670kb	12p Subtelomere
FE0116	12q Subtelomere(FITC) FISH Probe	FITC	Approximately 350kb	12q Subtelomere
FE0117	12q Subtelomere(Texas Red) FISH Probe	Texas Red	Approximately 350kb	12q Subtelomere
FE0118	12q Subtelomere(R6G) FISH Probe	R6G	Approximately 350kb	12q Subtelomere
FE0119	12q Subtelomere(DEAC) FISH Probe	DEAC	Approximately 350kb	12q Subtelomere
FE0120	12q Subtelomere(Cy5) FISH Probe	Cy5	Approximately 350kb	12q Subtelomere
FE0121	13q Subtelomere(FITC) FISH Probe	FITC	Approximately 370kb	13q Subtelomere
FE0122	13q Subtelomere(Texas Red) FISH Probe	Texas Red	Approximately 370kb	13q Subtelomere
FE0123	13q Subtelomere(R6G) FISH Probe	R6G	Approximately 370kb	13q Subtelomere
FE0124	13q Subtelomere(DEAC) FISH Probe	DEAC	Approximately 370kb	13q Subtelomere
FE0125	13q Subtelomere(Cy5) FISH Probe	Cy5	Approximately 370kb	13q Subtelomere
FE0126	14q Subtelomere(FITC) FISH Probe	FITC	Approximately 260kb	14q Subtelomere
FE0127	14q Subtelomere(Texas Red) FISH Probe	Texas Red	Approximately 260kb	14q Subtelomere
FE0128	14q Subtelomere(R6G) FISH Probe	R6G	Approximately 260kb	14q Subtelomere
FE0129	14q Subtelomere(DEAC) FISH Probe	DEAC	Approximately 260kb	14q Subtelomere
FE0130	14q Subtelomere(Cy5) FISH Probe	Cy5	Approximately 260kb	14q Subtelomere
FE0131	15q Subtelomere(FITC) FISH Probe	FITC	Approximately 240kb	15q Subtelomere
FE0132	15q Subtelomere(Texas Red) FISH Probe	Texas Red	Approximately 240kb	15q Subtelomere
FE0133	15q Subtelomere(R6G) FISH Probe	R6G	Approximately 240kb	15q Subtelomere
FE0134	15q Subtelomere(DEAC) FISH Probe	DEAC	Approximately 240kb	15q Subtelomere
FE0135	15q Subtelomere(Cy5) FISH Probe	Cy5	Approximately 240kb	15q Subtelomere
FE0136	16p Subtelomere(FITC) FISH Probe	FITC	Approximately 380kb	16p Subtelomere
FE0137	16p Subtelomere(Texas Red) FISH Probe	Texas Red	Approximately 380kb	16p Subtelomere
FE0138	16p Subtelomere(R6G) FISH Probe	R6G	Approximately 380kb	16p Subtelomere
FE0139	16p Subtelomere(DEAC) FISH Probe	DEAC	Approximately 380kb	16p Subtelomere
FE0140	16p Subtelomere(Cy5) FISH Probe	Cy5	Approximately 380kb	16p Subtelomere
FE0141	16q Subtelomere(FITC) FISH Probe	FITC	Approximately 520kb	16q Subtelomere
FE0142	16q Subtelomere(Texas Red) FISH Probe	Texas Red	Approximately 520kb	16q Subtelomere
FE0143	16q Subtelomere(R6G) FISH Probe	R6G	Approximately 520kb	16q Subtelomere
FE0144	16q Subtelomere(DEAC) FISH Probe	DEAC	Approximately 520kb	16q Subtelomere
FE0145	16q Subtelomere(Cy5) FISH Probe	Cy5	Approximately 520kb	16q Subtelomere
FE0146	17p Subtelomere(FITC) FISH Probe	FITC	Approximately 300kb	17p Subtelomere
FE0147	17p Subtelomere(Texas Red) FISH Probe	Texas Red	Approximately 300kb	17p Subtelomere
FE0148	17p Subtelomere(R6G) FISH Probe	R6G	Approximately 300kb	17p Subtelomere
FE0149	17p Subtelomere(DEAC) FISH Probe	DEAC	Approximately 300kb	17p Subtelomere
FE0150	17p Subtelomere(Cy5) FISH Probe	Cy5	Approximately 300kb	17p Subtelomere
FE0151	17q Subtelomere(FITC) FISH Probe	FITC	Approximately 420kb	17q Subtelomere
FE0152	17q Subtelomere(Texas Red) FISH Probe	Texas Red	Approximately 420kb	17q Subtelomere
FE0153	17q Subtelomere(R6G) FISH Probe	R6G	Approximately 420kb	17q Subtelomere
FE0154	17q Subtelomere(DEAC) FISH Probe	DEAC	Approximately 420kb	17q Subtelomere
FE0155	17q Subtelomere(Cy5) FISH Probe	Cy5	Approximately 420kb	17q Subtelomere
FE0156	18p Subtelomere(FITC) FISH Probe	FITC	Approximately 440kb	18p Subtelomere
FE0157	18p Subtelomere(Texas Red) FISH Probe	Texas Red	Approximately 440kb	18p Subtelomere
FE0158	18p Subtelomere(R6G) FISH Probe	R6G	Approximately 440kb	18p Subtelomere
FE0159	18p Subtelomere(DEAC) FISH Probe	DEAC	Approximately 440kb	18p Subtelomere
FE0160	18p Subtelomere(Cy5) FISH Probe	Cy5	Approximately 440kb	18p Subtelomere
FE0161	18q Subtelomere(FITC) FISH Probe	FITC	Approximately 480kb	18q Subtelomere
FE0162	18q Subtelomere(Texas Red) FISH Probe	Texas Red	Approximately 480kb	18q Subtelomere
FE0163	18q Subtelomere(R6G) FISH Probe	R6G	Approximately 480kb	18q Subtelomere
FE0164	18q Subtelomere(DEAC) FISH Probe	DEAC	Approximately 480kb	18q Subtelomere
FE0165	18q Subtelomere(Cy5) FISH Probe	Cy5	Approximately 480kb	18q Subtelomere

Subtelomere FISH Probes

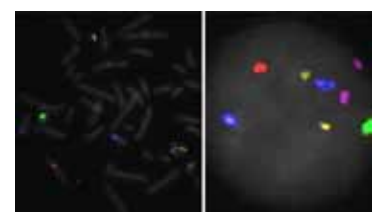
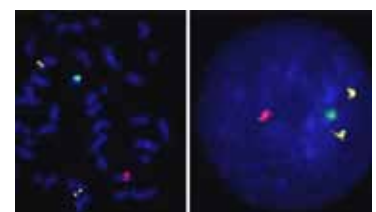
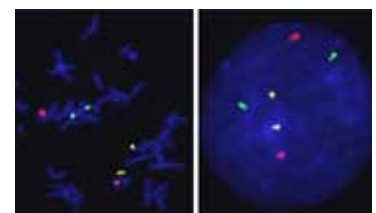
Subtelomere FISH Probes

Cat. Num.	Product Name	Fluorophore	Size	Location
FE0166	19p Subtelomere(FITC) FISH Probe	FITC	Approximately 300kb	19p Subtelomere
FE0167	19p Subtelomere(Texas Red) FISH Probe	Texas Red	Approximately 300kb	19p Subtelomere
FE0168	19p Subtelomere(R6G) FISH Probe	R6G	Approximately 300kb	19p Subtelomere
FE0169	19p Subtelomere(DEAC) FISH Probe	DEAC	Approximately 300kb	19p Subtelomere
FE0170	19p Subtelomere(Cy5) FISH Probe	Cy5	Approximately 300kb	19p Subtelomere
FE0171	19q Subtelomere(FITC) FISH Probe	FITC	Approximately 470kb	19q Subtelomere
FE0172	19q Subtelomere(Texas Red) FISH Probe	Texas Red	Approximately 470kb	19q Subtelomere
FE0173	19q Subtelomere(R6G) FISH Probe	R6G	Approximately 470kb	19q Subtelomere
FE0174	19q Subtelomere(DEAC) FISH Probe	DEAC	Approximately 470kb	19q Subtelomere
FE0175	19q Subtelomere(Cy5) FISH Probe	Cy5	Approximately 470kb	19q Subtelomere
FE0176	20p Subtelomere(FITC) FISH Probe	FITC	Approximately 630kb	20p Subtelomere
FE0177	20p Subtelomere(Texas Red) FISH Probe	Texas Red	Approximately 630kb	20p Subtelomere
FE0178	20p Subtelomere(R6G) FISH Probe	R6G	Approximately 630kb	20p Subtelomere
FE0179	20p Subtelomere(DEAC) FISH Probe	DEAC	Approximately 630kb	20p Subtelomere
FE0180	20p Subtelomere(Cy5) FISH Probe	Cy5	Approximately 630kb	20p Subtelomere
FE0181	20q Subtelomere(FITC) FISH Probe	FITC	Approximately 300kb	20q Subtelomere
FE0182	20q Subtelomere(Texas Red) FISH Probe	Texas Red	Approximately 300kb	20q Subtelomere
FE0183	20q Subtelomere(R6G) FISH Probe	R6G	Approximately 300kb	20q Subtelomere
FE0184	20q Subtelomere(DEAC) FISH Probe	DEAC	Approximately 300kb	20q Subtelomere
FE0185	20q Subtelomere(Cy5) FISH Probe	Cy5	Approximately 300kb	20q Subtelomere
FE0186	21q Subtelomere(FITC) FISH Probe	FITC	Approximately 380kb	21q Subtelomere
FE0187	21q Subtelomere(Texas Red) FISH Probe	Texas Red	Approximately 380kb	21q Subtelomere
FE0188	21q Subtelomere(R6G) FISH Probe	R6G	Approximately 380kb	21q Subtelomere
FE0189	21q Subtelomere(DEAC) FISH Probe	DEAC	Approximately 380kb	21q Subtelomere
FE0190	21q Subtelomere(Cy5) FISH Probe	Cy5	Approximately 380kb	21q Subtelomere
FE0191	22q Subtelomere(FITC) FISH Probe	FITC	Approximately 150kb	22q Subtelomere
FE0192	22q Subtelomere(Texas Red) FISH Probe	Texas Red	Approximately 150kb	22q Subtelomere
FE0193	22q Subtelomere(R6G) FISH Probe	R6G	Approximately 150kb	22q Subtelomere
FE0194	22q Subtelomere(DEAC) FISH Probe	DEAC	Approximately 150kb	22q Subtelomere
FE0195	22q Subtelomere(Cy5) FISH Probe	Cy5	Approximately 150kb	22q Subtelomere



Prenatal FISH Probes

Product Information				
Cat.Num	FM0001			
Product Name	3-Color FISH Probe (chromosome 13, 18 & 21)			
	Probe Name	Size	Fluorophore	Location
Probe 1	CEN13q	Approximately 550kb	FITC	13q12.11
Probe 2	CEN18q	Approximately 660kb	Texas Red	18q11.2
Probe 3	CEN21q	Approximately 550kb	R6G	21q22.13
Cat.Num	FM0002			
Product Name	3-Color FISH Probe (chromosome 21, X & Y)			
	Probe Name	Size	Fluorophore	Location
Probe 1	CEN21q	Approximately 550kb	R6G	21q22.13
Probe 2	CENXp	Approximately 550kb	Texas Red	Xp11.23
Probe 3	CENYq	Approximately 470kb	FITC	Yq11.221
Cat.Num	FM0003			
Product Name	5-Color FISH Probe (chromosome 13, 18, 21, X & Y)			
	Probe Name	Size	Fluorophore	Location
Probe 1	CEN13q	Approximately 550kb	DEAC	13q12.11
Probe 2	CEN18q	Approximately 660kb	Cy5	18q11.2
Probe 3	CEN21q	Approximately 550kb	R6G	21q22.13
Probe 4	CENXp	Approximately 550kb	Texas Red	Xp11.23
Probe 5	CENYq	Approximately 470kb	FITC	Yq11.221



Make to order

Cat. Num.	Product Name	Cat. Num.	Product Name
FA0520	ABC2(Texas Red)/CEN4q(FITC) FISH Probe	FA0514	HD(Texas Red)/CEN4p(FITC) FISH Probe
FA0605	ADA(Texas Red)/CEN20p(FITC) FISH Probe	FA0479	HKR3(Texas Red)/CEN1p(FITC) FISH Probe
FA0554	AF10(Texas Red)/CEN10q(FITC) FISH Probe	FA0534	HOXA9(Texas Red)/CEN7p(FITC) FISH Probe
FA0519	AF4(Texas Red)/CEN4p(FITC) FISH Probe	FA0558	HRAS(Texas Red)/CEN11p(FITC) FISH Probe
FA0546	AF9(Texas Red)/CEN9q(FITC) FISH Probe	FA0507	hTR(Texas Red)/CEN3q(FITC) FISH Probe
FA0576	AKT1(Texas Red)/CEN14q(FITC) FISH Probe	FA0535	IGFBP1(Texas Red)/CEN7p(FITC) FISH Probe
FA0596	APOC2(Texas Red)/CEN19p(FITC) FISH Probe	FA0579	IGFR(Texas Red)/CEN15q(FITC) FISH Probe
FA0583	APRT(Texas Red)/CEN16q(FITC) FISH Probe	FA0496	IGFR1(Texas Red)/CEN1p(FITC) FISH Probe
FA0617	AR(Texas Red)/CENXp(FITC) FISH Probe	FA0594	INSR(Texas Red)/CEN19q(FITC) FISH Probe
FA0620	ARMET(Texas Red)/CEN3q(FITC) FISH Probe	FA0522	IRF1(Texas Red)/CEN5q(FITC) FISH Probe
FA0562	ATM(Texas Red)/CEN11q(FITC) FISH Probe	FA0521	IRF2(Texas Red)/CEN4q(FITC) FISH Probe
FA0601	AVP(Texas Red)/CEN20q(FITC) FISH Probe	FA0526	IRF4(Texas Red)/CEN6p(FITC) FISH Probe
FA0600	AXL(Texas Red)/CEN19q(FITC) FISH Probe	FA0498	IRR(Texas Red)/CEN1p(FITC) FISH Probe
FA0492	BCAS2(Texas Red)/CEN1p(FITC) FISH Probe	FA0602	JAG1(Texas Red)/CEN20q(FITC) FISH Probe
FA0592	BCL2(Texas Red)/CEN18q(FITC) FISH Probe	FA0491	JUN(Texas Red)/CEN1p(FITC) FISH Probe
FA0599	BCL3(Texas Red)/CEN19p(FITC) FISH Probe	FA0517	KIT(Texas Red)/CEN4p(FITC) FISH Probe
FA0512	BCL6(Texas Red)/CEN3q(FITC) FISH Probe	FA0499	LAMC2(Texas Red)/CEN1q(FITC) FISH Probe
FA0586	BRCA1(Texas Red)/CEN17q(FITC) FISH Probe	FA0584	LIS1(Texas Red)/CEN17q(FITC) FISH Probe
FA0622	BWS(Texas Red)/CEN11p(FITC) FISH Probe	FA0590	MADH4(Texas Red)/CEN18q(FITC) FISH Probe
FA0552	CAN(Texas Red)/CEN9q(FITC) FISH Probe	FA0513	MASP1(Texas Red)/CEN3q(FITC) FISH Probe
FA0504	CATENINB1(Texas Red)/CEN3q(FITC) FISH Probe	FA0618	MCF2(Texas Red)/CENXp(FITC) FISH Probe
FA0566	CCND2(Texas Red)/CEN12p(FITC) FISH Probe	FA0501	MER(Texas Red)/CEN2q(FITC) FISH Probe
FA0529	CCND3(Texas Red)/CEN6p(FITC) FISH Probe	FA0503	MLH1(Texas Red)/CEN3q(FITC) FISH Probe
FA0582	CDH1(Texas Red)/CEN16q(FITC) FISH Probe	FA0606	MODY1(Texas Red)/CEN20p(FITC) FISH Probe
FA0613	CHRNA4(Texas Red)/CEN20p(FITC) FISH Probe	FA0543	MOS1(Texas Red)/CEN8p(FITC) FISH Probe
FA0500	c-rel(Texas Red)/CEN2p(FITC) FISH Probe	FA0581	MRP1(Texas Red)/CEN16q(FITC) FISH Probe
FA0609	CSE1(Texas Red)/CEN20p(FITC) FISH Probe	FA0544	MTG81(Texas Red)/CEN8q(FITC) FISH Probe
FA0523	CSF1R(Texas Red)/CEN5q(FITC) FISH Probe	FA0551	MUSK(Texas Red)/CEN9q(FITC) FISH Probe
FA0621	CTNNA1(Texas Red)/CEN9q(FITC) FISH Probe	FA0532	MYB(Texas Red)/CEN6p(FITC) FISH Probe
FA0542	CTSB1(Texas Red)/CEN8p(FITC) FISH Probe	FA0488	MYCL1(Texas Red)/CEN1p(FITC) FISH Probe
FA0619	DAZ1(Texas Red or FITC) FISH Probe	FA0580	MYH11(Texas Red)/CEN16q(FITC) FISH Probe
FA0591	DCC(Texas Red)/CEN18q(FITC) FISH Probe	FA0623	NEO1(Texas Red)/CEN15q(FITC) FISH Probe
FA0528	DDR1(Texas Red)/CEN6p(FITC) FISH Probe	FA0588	NM23H1(Texas Red)/CEN17q(FITC) FISH Probe
FA0493	DDR2(Texas Red)/CEN1p(FITC) FISH Probe	FA0494	NRAS(Texas Red)/CEN1q(FITC) FISH Probe
FA0527	dek(Texas Red)/CEN6p(FITC) FISH Probe	FA0557	NRG3(Texas Red)/CEN9q(FITC) FISH Probe
FA0616	DMD(Texas Red)/CENXp(FITC) FISH Probe	FA0495	NTRK1(Texas Red)/CEN1p(FITC) FISH Probe
FA0595	E2A(Texas Red)/CEN19q(FITC) FISH Probe	FA0559	NUP98(Texas Red)/CEN11p(FITC) FISH Probe
FA0537	ELN(Texas Red)/CEN7p(FITC) FISH Probe	FA0480	p58(Texas Red)/CEN1p(FITC) FISH Probe
FA0560	EMS1(Texas Red)/CEN11p(FITC) FISH Probe	FA0561	PAK1(Texas Red)/CEN11p(FITC) FISH Probe
FA0505	Eph A4(Texas Red)/CEN2q(FITC) FISH Probe	FA0518	PDGFRA(Texas Red)/CEN4p(FITC) FISH Probe
FA0530	Eph A7(Texas Red)/CEN6p(FITC) FISH Probe	FA0538	PGY1(Texas Red)/CEN7q(FITC) FISH Probe
FA0487	EPHA10(Texas Red)/CEN1p(FITC) FISH Probe	FA0508	PIK3CA(Texas Red)/CEN3q(FITC) FISH Probe
FA0540	EPHA11(Texas Red)/CEN7q(FITC) FISH Probe	FA0608	PTGIS(Texas Red)/CEN20p(FITC) FISH Probe
FA0483	EPHA2(Texas Red)/CEN1p(FITC) FISH Probe	FA0607	PTPN1(Texas Red)/CEN20p(FITC) FISH Probe
FA0509	EPHA3(Texas Red)/CEN3q(FITC) FISH Probe	FA0545	PTPRD1(Texas Red)/CEN9q(FITC) FISH Probe
FA0482	EPHA8(Texas Red)/CEN1p(FITC) FISH Probe	FA0574	RB1(Texas Red)/CEN13q(FITC) FISH Probe
FA0510	EPHB1(Texas Red)/CEN3q(FITC) FISH Probe	FA0555	RET(Texas Red)/CEN9q(FITC) FISH Probe
FA0484	EPHB2(Texas Red)/CEN1p(FITC) FISH Probe	FA0490	ROR1(Texas Red)/CEN1p(FITC) FISH Probe
FA0511	EPHB3(Texas Red)/CEN3q(FITC) FISH Probe	FA0548	ROR2(Texas Red)/CEN9q(FITC) FISH Probe
FA0539	EPHB41(Texas Red)/CEN7q(FITC) FISH Probe	FA0531	ROS1(Texas Red)/CEN6p(FITC) FISH Probe
FA0533	ESR(Texas Red)/CEN6p(FITC) FISH Probe	FA0589	RPS6KB1(Texas Red)/CEN17q(FITC) FISH Probe
FA0564	ETS1(Texas Red)/CEN11q(FITC) FISH Probe	FA0553	RXRA(Texas Red)/CEN9q(FITC) FISH Probe
FA0614	ETS2(Texas Red)/CEN21q(FITC) FISH Probe	FA0585	RYK(Texas Red)/CEN17q(FITC) FISH Probe
FA0556	FAS(Texas Red)/CEN9q(FITC) FISH Probe	FA0570	SAS(Texas Red)/CEN12p(FITC) FISH Probe
FA0577	FES(Texas Red)/CEN15q(FITC) FISH Probe	FA0615	SHOX(Texas Red)/CENXp(FITC) FISH Probe
FA0515	FGFR5(Texas Red)/CEN4p(FITC) FISH Probe	FA0603	SRC(Texas Red)/CEN20p(FITC) FISH Probe
FA0485	FGR(Texas Red)/CEN1p(FITC) FISH Probe	FA0611	STK15(Texas Red)/CEN20p(FITC) FISH Probe
FA0506	FHIT(Texas Red)/CEN3q(FITC) FISH Probe	FA0612	STK6(Texas Red)/CEN20p(FITC) FISH Probe
FA0565	FLI1(Texas Red)/CEN11q(FITC) FISH Probe	FA0569	STYK1(Texas Red)/CEN12q(FITC) FISH Probe
FA0572	FLT3(Texas Red)/CEN13q(FITC) FISH Probe	FA0563	T3D(Texas Red)/CEN11q(FITC) FISH Probe
FA0524	FMS(Texas Red)/CEN5q(FITC) FISH Probe	FA0486	TAL1(Texas Red)/CEN1p(FITC) FISH Probe
FA0575	FOS(Texas Red)/CEN14q(FITC) FISH Probe	FA0550	TAL2(Texas Red)/CEN9q(FITC) FISH Probe
FA0567	GAPDH(Texas Red)/CEN12p(FITC) FISH Probe	FA0541	TCRB1(Texas Red)/CEN7q(FITC) FISH Probe
FA0571	GLI(Texas Red)/CEN12p(FITC) FISH Probe	FA0568	TEL(Texas Red)/CEN12p(FITC) FISH Probe
FA0536	GRB10(Texas Red)/CEN7q(FITC) FISH Probe	FA0597	TGFB1(Texas Red)/CEN19p(FITC) FISH Probe

Make to order

Make to order

Cat. Num.	Product Name	Cat. Num.	Product Name
FA0587	THRA(Texas Red)/CEN17q(FITC) FISH Probe	FA0578	TRKC(Texas Red)/CEN15q(FITC) FISH Probe
FA0489	TIE1(Texas Red)/CEN1p(FITC) FISH Probe	FA0598	TYROBP(Texas Red)/CEN19p(FITC) FISH Probe
FA0547	TIE2(Texas Red)/CEN9q(FITC) FISH Probe	FA0593	VAV1(Texas Red)/CEN19q(FITC) FISH Probe
FA0481	TNFRSF1B(Texas Red)/CEN1p(FITC) FISH Probe	FA0573	VEGFR1(Texas Red)/CEN13q(FITC) FISH Probe1
FA0604	TOP1(Texas Red)/CEN20p(FITC) FISH Probe	FA0516	VEGFR2(Texas Red)/CEN4p(FITC) FISH Probe
FA0502	TOP2B(Texas Red)/CEN3q(FITC) FISH Probe	FA0525	VEGFR3(Texas Red)/CEN5q(FITC) FISH Probe
FA0497	TRKA(Texas Red)/CEN1p(FITC) FISH Probe	FA0624	ZNF146(Texas Red)/CEN19p(FITC) FISH Probe
FA0549	TRKB(Texas Red)/CEN9q(FITC) FISH Probe	FA0610	ZNF217(Texas Red)/CEN20p(FITC) FISH Probe

Accessory Kits & Reagents

Product Name : FFPE FISH PreTreatment Kit

Cat. Num. : KA1122

Product Description :

Pre-treatment is an essential step for effective FISH on Formalin-Fixed Paraffin-Embedded (FFPE) tissue sections. This kit contains key reagents used to pretreat FFPE tissue sections from dewaxing with xylene through proteolytic digestion to help permeabilization of cell membranes to facilitate penetration of fluorescence labeled probes. After proteolytic digestion, proceed the subsequent steps with the FISH assay protocol.



Kit content:

1. Pretreatment Solution, 500 mL
2. Protease (Pepsin), 0.5ml x 10 vials
3. Protease Buffer (HCl solution, pH 2), 500 mL

Accessory Kits & Reagents

Cat. Num.	Product Name	Product Description
U0032	Antifade Solution	Antifade Solution is comprised of Antifade and glycerol in an aqueous buffer solution.
U0030	DAPI Counterstain (150ng/ml)	DAPI is the recommended counterstain for FISH probes. This concentration of DAPI provides a weaker DAPI stain usually preferred with smaller probe signals such as FISH probes.
U0031	DAPI Counterstain (1500ng/ml)	Recommended counterstain when a more intense DAPI stain is desired. Provides more distinct DAPI banding patterns than achievable with DAPI Counterstain (150ng/ml) in certain applications such as staining of nuclear DNA in paraffin sections.
U0028	FISH Hybridization Buffer(1ml)	FISH Hybridization Buffer is optimized for performance with FISH probes and contains dextran sulfate, formamide, and SSC (pH 7.0).
U0029	FISH Hybridization Buffer(5ml)	FISH Hybridization Buffer is optimized for performance with FISH probes and contains dextran sulfate, formamide, and SSC (pH 7.0).

