

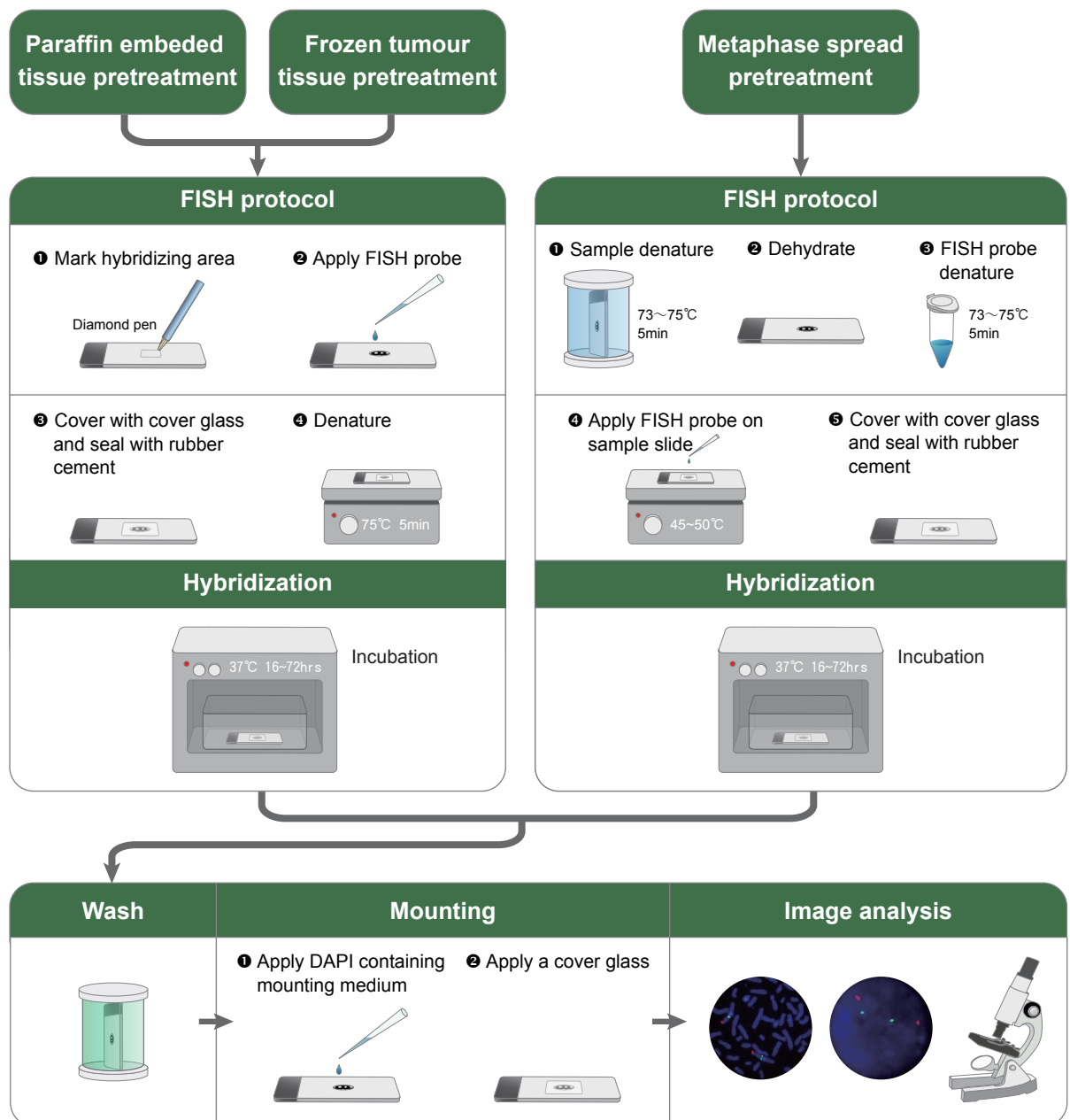
Fluorescence *In Situ* Hybridization (FISH)

FISH is a technique used to identify and localize the presence or absence of specific DNA sequences on cells and tissues. Abnova has developed a range of FISH probes for the detection of gene amplification, loss and translocation. Each FISH probe product has a pair of locus-specific, fluorophore-labeled probes originated from a bacterial artificial chromosome (BAC) library. We continue to expand the scope of the FISH probes to meet the customer's research needs. Custom probes are also available upon request.

Advantages

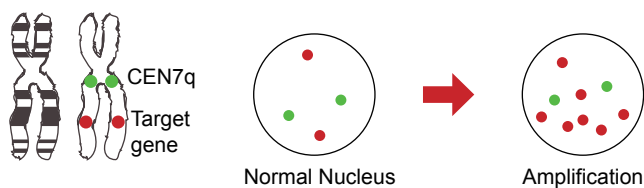
- Dual colored probes for fast, sensitive, and specific detection
- Work on metaphase spread, paraffin embedded and frozen tissue
- Identify gene amplification, loss, and translocation
- High signal to noise ratio
- Low cross reactivity

Procedure



Product Lines

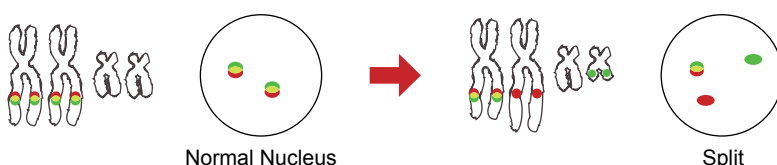
Gene Amplification / Gene Loss



| Catalog No. | Product Name |
|-------------|--------------------------|
| FG0001 | FGF23/CEN12p FISH Probe |
| FG0002 | p16/CEN9q FISH Probe |
| FG0003 | NF2/CEN22q FISH Probe |
| FG0004 | c-met/CEN7q FISH Probe |
| FG0005 | EGFR/CEN7q FISH Probe |
| FG0006 | HRE2/CEN17q FISH Probe |
| FG0007 | TOP2A/CEN17q FISH Probe |
| FG0008 | CX43/CEN6 FISH Probe |
| FG0009 | c-myc/CEN8p FISH Probe |
| FG0010 | CCND1/CEN11p FISH Probe |
| FG0011 | p53/CEN17q FISH Probe |
| FG0012 | TYMS/CEN18q FISH Probe |
| FG0013 | CCNE1/CEN19p FISH Probe |
| FG0014 | AKT2/CEN19p FISH Probe |
| FG0015 | DYRK1A/CEN21q FISH Probe |
| FG0016 | MLL/CEN11p FISH Probe |
| FG0017 | KRAS/CEN12q FISH Probe |

| Catalog No. | Product Name |
|-------------|------------------------------|
| FG0018 | FGFR2/CEN10p FISH Probe |
| FG0019 | PTEN/CEN10p FISH Probe |
| FG0020 | MDM2/CEN12p FISH Probe |
| FG0021 | APC/CEN5q FISH Probe |
| FG0022 | ACTN4/CEN19p FISH Probe |
| FG0023 | HER3/CEN12p FISH Probe |
| FG0024 | HER4/CEN2p FISH Probe |
| FG0025 | UBE3A/CEN15q FISH Probe |
| FG0026 | TRF1/CEN8p FISH Probe |
| FG0027 | 1p36.33/CEN11p FISH Probe |
| FG0028 | 9q34/CEN9q FISH Probe |
| FG0029 | VHL/CEN3q FISH Probe |
| FG0030 | CALR/CEN19q FISH Probe |
| FG0031 | RUNX2/CEN6p FISH Probe |
| FG0032 | CHGA-ITPK1/CEN14q FISH Probe |
| FG0033 | CDK4/CEN12q FISH Probe |
| FG0034 | AIB1/CEN20q FISH Probe |

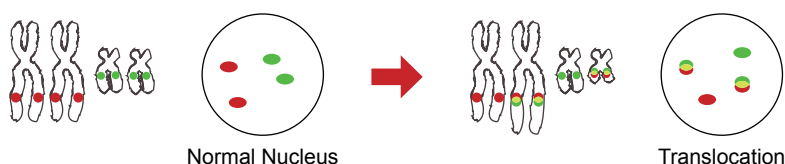
Split Dual Color FISH Probe



| Catalog No. | Product Name |
|-------------|------------------------|
| FS0001 | ALK Split FISH Probe |
| FS0002 | SYT Split FISH Probe |
| FS0003 | EWSR1 Split FISH Probe |
| FS0004 | TFE3 Split FISH Probe |

| Catalog No. | Product Name |
|-------------|-------------------------|
| FS0005 | RARA Split FISH Probe |
| FS0006 | MYC Split FISH Probe |
| FS0007 | PDGFRB Split FISH Probe |
| FS0008 | ERG Split FISH Probe |

Translocation Dual Color FISH Probe



| Catalog No. | Product Name |
|-------------|--------------------------------------|
| FT0001 | EML4/ALK DY Translocation FISH Probe |
| FT0002 | bcr/abl DY Translocation FISH Probe |

| Catalog No. | Product Name |
|-------------|--------------------------------------|
| FT0003 | AML1/ETO DY Translocation FISH Probe |
| FT0004 | PML/RARA DY Translocation FISH Probe |

Accessory Kits & Reagents

| Catalog No. | Product Name |
|-------------|------------------------------|
| KA1122 | FFPE FISH PreTreatment Kit |
| U0032 | Antifade Solution |
| U0030 | DAPI Counterstain (150ng/ml) |

| Catalog No. | Product Name |
|-------------|--------------------------------|
| U0031 | DAPI Counterstain (1500ng/ml) |
| U0028 | FISH Hybridization Buffer(1ml) |
| U0029 | FISH Hybridization Buffer(5ml) |