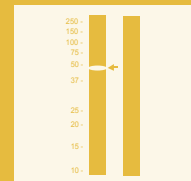


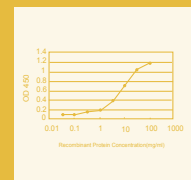
ELISA and Assay Kits



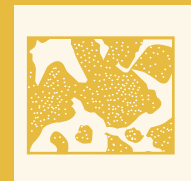
Western Blot



Sandwich ELISA



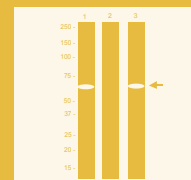
Immunohistochemistry



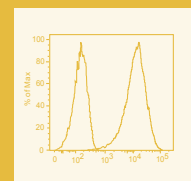
Immunofluorescence



Immunoprecipitation



Flow Cytometry



ELISA Kits	1
Autoimmune Disease ELISA Kits	8
Infectious Disease ELISA Kits	8
Ab Labeling Kits	10
Activity Assay Kits	10
Apoptosis Assay Kits	11
Cell Damage and Oxidative Stress Assay Kits	11
Cell Proliferation and Cytotoxicity Assay Kits	11
Epigenetic Assay Kits	12
Fluorescent Protein Assay Kits	13
IHC Kits	13
IP & CHIP Kits	13
Metabolism Assay Kits	14
Signal Transduction Assay Kits	15

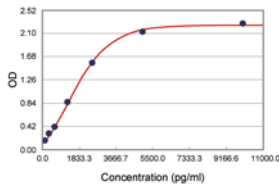
Abnova Corporation

www.abnova.com

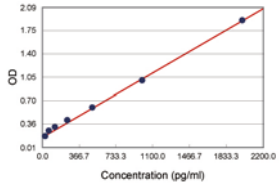
Email: sales@abnova.com

Address: 9F, No. 108, Jhouzih St., Neihu, Taipei 114, Taiwan

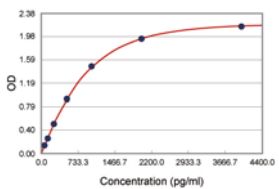
Tel: + 886 2 8751 1888 Fax: + 886 2 6602 1218



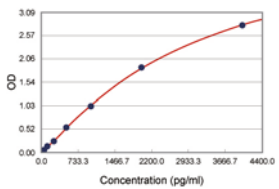
KA0432



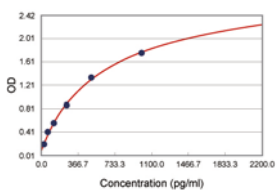
KA0329



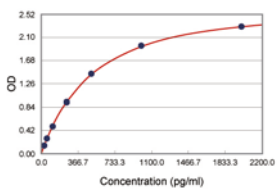
KA0441



KA0543



KA0389



KA0386

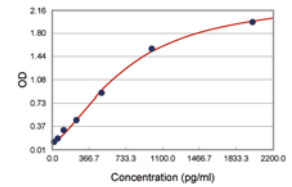
ELISA Kits

Cat. Num.	Product Name	Calibration Range	Limit of Detection
KA0486	A2M (Human) ELISA Kit	0.002 to 0.5 ug/mL	2 ng/mL
KA0487	A2M (Human) ELISA Kit	0.63 to 40 ug/mL	1 ug/mL
KA0432	ACE (Human) ELISA Kit	156 to 10,000 pg/mL	5 pg/mL
KA0041	ACP5 (Human) ELISA Kit	0.2 to 4 U/L	0.4 U/L
KA0916	ACTH (Human) ELISA Kit	5 to 165 pg/mL	0.46 pg/mL
KA0917	ACTH (Mouse/Rat) ELISA Kit (Chemiluninescence)	7 to 515 pg/mL	1 pg/mL
KA0016	ADIPOQ (Human) ELISA Kit	0.1 to 10 ug/mL	26 ng/mL
KA0089	ADIPOQ (Human) ELISA Kit	2.5 to 160 ng/mL	1.46 ng/mL
KA0978	ADIPOQ (Human) ELISA Kit	0.78 to 50 ng/mL	0.5 ng/mL
KA0017	ADIPOQ (Human) High Sensitivity ELISA Kit	1 to 150 ng/mL	0.47 ng/mL ¹
KA0018	Adipoq (Mouse) ELISA Kit	0.25 to 8 ng/mL	0.1 ng/mL
KA0090	Adipoq (Mouse) ELISA Kit	0.19 to 12 ng/mL	0.173 ng/mL
KA0202	AFP (Human) ELISA Kit	0 to 300 ng/mL	2 ng/mL
KA0457	AGT (Human) ELISA Kit	0.063 to 1 ng/mL	30 pg/mL
KA0478	AHSG (Human) ELISA Kit	6.25 to 400 ng/mL	5 ng/mL
KA0454	Albumin (Human) ELISA Kit	0.391 to 100 ug/mL	300 ng/mL
KA0455	Albumin (Human) ELISA Kit	3.125 to 200 ng/mL	500 pg/mL
KA0488	Albumin (Mouse) ELISA Kit	0.098 to 25 ug/mL	300 ng/mL
KA0489	Albumin (Mouse) ELISA Kit	1.56 to 400 ng/mL	1 ng/mL
KA0497	Albumin (Pig) ELISA Kit	1.56 to 100 ng/mL	1 ng/mL
KA0980	Albumin (Rabbit) ELISA Kit	1.56 to 100 ug/mL	100 ng/mL
KA0501	Albumin (Rat) ELISA Kit	0.391 to 100 ug/mL	300 ng/mL
KA0502	Albumin (Rat) ELISA Kit	0.781 to 200 ng/mL	150 pg/mL
KA0926	Amphetamine ELISA Kit	10 to 50 ng/mL	1 ng/mL
KA0150	anti-Annexin V (Human) ELISA Kit	6.25 to 400 ng/mL	1.18 ng/mL
KA0098	anti-CML autoantibody (Human) ELISA Kit	0.31 to 20 ng/mL	0.32 ng/mL
KA0097	anti-CML autoantibody (Mouse) ELISA Kit	0.31 to 20 ng/mL	0.324 ng/mL
KA0099	anti-CML autoantibody (Rat) ELISA Kit	0.31 to 20 ng/mL	0.879 ng/mL
KA0127	anti-IFN-alpha (Human) ELISA Kit	3.2 to 200 ng/mL	1.38 ng/mL
KA0158	AOC3 (Human) ELISA Kit	31.3 to 2,000 pg/mL	19 pg/mL
KA0460	APOA1 (Human) ELISA Kit	0.63 to 20 ug/mL	100 ng/mL
KA0462	APOA1 (Human) ELISA Kit	3.13 to 200 ug/mL	3 ng/mL
KA0461	APOA2 (Human) ELISA Kit	0.016 to 16 ug/mL	50 ng/mL
KA0463	APOC1 (Human) ELISA Kit	0.063 to 2 ug/mL	30 ng/mL
KA0464	APOC2 (Human) ELISA Kit	0.0019 to 2 ug/mL	10 ng/mL
KA0465	APOC3 (Human) ELISA Kit	0.002 to 2 ug/mL	5 ng/mL
KA0982	APOH (Human) ELISA Kit	0.625 to 40 ng/mL	0.5 ng/mL
KA0019	ARG1 (Human) ELISA Kit	5 to 320 ng/mL	0.5 ng/mL
KA0301	Arg8-Vasopressin ELISA Kit	4.10 to 1,000 pg/mL	3.39 pg/mL
KA0222	B2M (Human) ELISA Kit	0 to 10 ug/mL	0.1 ug/mL
KA0927	Barbiturate ELISA Kit	5 to 25 ng/mL	1 ng/mL
KA0147	BCL2 (Human) ELISA Kit	0.50 to 32 ng/mL	0.5 ng/mL
KA0329	BDNF (Human) ELISA Kit	31.2 to 2,000 pg/mL	2 pg/mL
KA0331	Bdnf (Mouse) ELISA Kit	31.2 to 2,000 pg/mL	2 pg/mL
KA0330	Bdnf (Rat) ELISA Kit	31.2 to 2,000 pg/mL	2 pg/mL
KA0441	BIRC5 (Human) ELISA Kit	62.5 to 4,000 pg/mL	2 pg/mL
KA0540	BMP2 (Human) ELISA Kit	62.5 to 4,000 pg/mL	2 pg/mL
KA0542	Bmp2 (Mouse) ELISA Kit	62.5 to 4,000 pg/mL	2 pg/mL
KA0541	Bmp2 (Rat) ELISA Kit	62.5 to 4,000 pg/mL	2 pg/mL
KA0543	BMP4 (Human) ELISA Kit	62.5 to 4,000 pg/mL	4 pg/mL
KA0988	BSG (Human) ELISA Kit	31.2 to 2,000 pg/mL	2 pg/mL
KA0466	C3 (Human) ELISA Kit	0.47 to 30 ug/mL	100 ng/mL
KA0205	CA125 (Human) ELISA Kit	0 to 400 U/mL	5 U/mL
KA0206	CA15-3 (Human) ELISA Kit	0 to 240 U/mL	5 U/mL
KA0207	CA19-9 (Human) ELISA Kit	0 to 600 U/mL	10 U/mL
KA0928	Cannabinoids ELISA Kit	2 to 10 ng/mL	1 ng/mL
KA0184	CASP8 (Human) ELISA Kit	0.16 to 10 ng/mL	0.1 ng/mL
KA0185	CASP9 (Human) ELISA Kit	1.6 to 100 ng/mL	0.4 ng/mL
KA0334	CCL11 (Human) ELISA Kit	31.2 to 2,000 pg/mL	2 pg/mL
KA0240	Ccl11 (Mouse) ELISA Kit	31.3 to 2,000 pg/mL	3.6 pg/mL
KA0169	CCL2 (Human) ELISA Kit	15.6 to 1,000 pg/mL	2.3 pg/mL
KA0255	Ccl2 (Mouse) ELISA Kit	15.6 to 1,000 pg/mL	2.2 pg/mL
KA0389	CCL20 (Human) ELISA Kit	15.6 to 1,000 pg/mL	1 pg/mL
KA0386	CCL22 (Human) ELISA Kit	31.2 to 2,000 pg/mL	1 pg/mL
KA0387	Ccl22 (Mouse) ELISA Kit	15.6 to 1,000 pg/mL	1 pg/mL

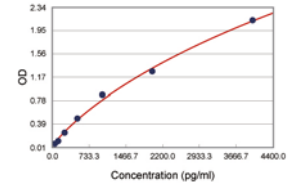
Note:
1. 0.47 ng/mL (serum, pLasma), 0.156 ng/mL (miLk, urine, CSF)

ELISA Kits

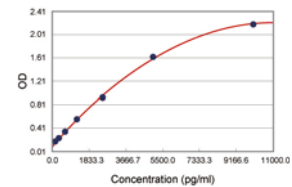
Cat. Num.	Product Name	Calibration Range	Limit of Detection
KA0388	CCL3 (Human) ELISA Kit	31.2 to 2,000 pg/mL	10 pg/mL
KA0411	CCL5 (Human) ELISA Kit	31.2 to 2,000 pg/mL	3 pg/mL
KA0519	CCL7 (Human) ELISA Kit	30 to 1,600 pg/mL	30 pg/mL
KA0446	CD14 (Human) ELISA Kit	5 to 50 ng/mL	5 ng/mL
KA0447	Cd14 (Mouse) ELISA Kit	5 to 50 ng/mL	5 ng/mL
KA0172	CD28 (Human) ELISA Kit	0.8 to 50 ng/mL	0.18 ng/mL
KA0161	CD40 (Human) ELISA Kit	7.8 to 500 pg/mL	6.92 pg/mL
KA0144	CD40LG (Human) ELISA Kit	0.16 to 10 ng/mL	0.062 ng/mL
KA0551	CD40LG (Human) ELISA Kit	62.5 to 4,000 pg/mL	6 pg/mL
KA0239	Cd40lg (Mouse) ELISA Kit	0.31 to 20 ng/mL	0.14 ng/mL
KA0119	CD44std (Human) ELISA Kit	0.12 to 4 ng/mL	0.015 ng/mL
KA0129	CD44var (v5) (Human) ELISA Kit	0.32 to 10 ng/mL	0.14 ng/mL
KA0120	CD44var (v6) (Human) ELISA Kit	0.32 to 10 ng/mL	0.05 ng/mL
KA0133	CD8 (Human) ELISA Kit	31.3 to 2,000 U/mL	6.9 U/mL
KA0991	Cd80 (Mouse) ELISA Kit	62.5 to 4,000 pg/mL	10 pg/mL
KA0433	CDH1 (Human) ELISA Kit	156 to 10,000 pg/mL	15 pg/mL
KA0668	CDH3 (Human) ELISA Kit	62.5 to 4,000 pg/mL	2 pg/mL
KA0152	CDH5 (Human) ELISA Kit	0.16 to 10 ng/mL	0.15 ng/mL
KA0271	CDH5 (Monkey) ELISA Kit	0.19 to 12.5 U/mL	0.1 U/mL
KA0204	CEA (Human) ELISA Kit	0 to 120 ng/mL	1 ng/mL
KA0102	Cellular BrdU (Human) ELISA Kit	N/A	N/A
KA0212	CG (Human) ELISA Kit	0 to 300 mIU/mL	2 mIU/mL
KA0042	Clu (Rat) ELISA Kit	4 to 128 ng/mL	0.7 ng/mL
KA0096	CML/Nε-(carboxymethyl) lysine ELISA Kit	0.08 to 5 ug/mL	0.127 ng/mL
KA0929	Cocaine Metabolite ELISA Kit	10 to 50 ng/mL	1 ng/mL
KA0021	COMP (Human) ELISA Kit	4 to 128 ng/mL	0.5 ng/mL
KA0467	Complement C4 (Human) ELISA Kit	0.313 to 5 ug/mL	50 ng/mL
KA0308	Complement C4a des Arg (Human) ELISA Kit	0.78 to 200 ng/mL	0.76 ng/mL
KA0468	Corticosterone ELISA Kit	0.098 to 100 ng/mL	40 pg/mL
KA0918	Cortisol (Human) ELISA Kit	20 to 80 ng/mL	0.44 ng/mL
KA0919	Cortisol (Sheep) ELISA Kit	1 to 60 ng/mL	0.1 ng/mL
KA0930	Cotinine ELISA Kit	5 to 100 ng/mL	1 ng/mL
KA0469	CP (Human) ELISA Kit	0.63 to 40 ug/mL	100 ng/mL
KA0470	CP (Human) ELISA Kit	1.25 to 320 ng/mL	1 ng/mL
KA0238	CRP (Human) ELISA Kit	0 to 0.10 mg/L	0.1 mg/L
KA0384	CSF1 (Human) ELISA Kit	15.6 to 1,000 pg/mL	1 pg/mL
KA0385	Csf1 (Mouse) ELISA Kit	15.6 to 1,000 pg/mL	1 pg/mL
KA0170	CSF2 (Human) ELISA Kit	7.8 to 500 pg/mL	2.9 pg/mL
KA0241	Csf2 (Mouse) ELISA Kit	3.9 to 250 pg/mL	1.98 pg/mL
KA0272	Csf2 (Rat) ELISA Kit	7.8 to 500 pg/mL	3.5 pg/mL
KA0985	Csf2 (Rat) ELISA Kit	15.6 to 1,000 pg/mL	1 pg/mL
KA0983	Csf3 (Mouse) ELISA Kit	31.2 to 2,000 pg/mL	4 pg/mL
KA0022	CST3 (Human) ELISA Kit	200 to 10,000 ng/mL	0.2 ng/mL
KA0434	CTF1 (Human) ELISA Kit	31.2 to 2,000 pg/mL	10 pg/mL
KA0165	CTLA4 (Human) ELISA Kit	0.16 to 10 ng/mL	0.13 ng/mL
KA0552	CTSB (Human) ELISA Kit	156 to 10,000 pg/mL	5 pg/mL
KA0992	Ctsb (Mouse) ELISA Kit	156 to 10,000 pg/mL	5 pg/mL
KA0156	CTSL1 (Human) ELISA Kit	3.1 to 50 ng/mL	1.71 ng/mL
KA0131	Cu/ZnSOD (Human) ELISA Kit	0.08 to 5 ng/mL	0.04 ng/mL
KA0545	CX3CL1 (Human) ELISA Kit	156 to 10,000 pg/mL	50 pg/mL
KA0663	Cx3cl1 (Mouse) ELISA Kit	156 to 10,000 pg/mL	10 pg/mL
KA0553	Cxcl1 (Mouse) ELISA Kit	15.6 to 1,000 pg/mL	1 pg/mL
KA0554	Cxcl1 (Rat) ELISA Kit	15.6 to 1,000 pg/mL	1 pg/mL
KA0259	Cxcl10 (Mouse) ELISA Kit	7.8 to 500 pg/mL	6.5 pg/mL
KA0664	Cxcl12 (Mouse) ELISA Kit	62.5 to 4,000 pg/mL	10 pg/mL
KA0556	Cxcl16 (Mouse) ELISA Kit	15.6 to 1,000 pg/mL	1 pg/mL
KA0555	CXCL9 (Human) ELISA Kit	31.2 to 2,000 pg/mL	2 pg/mL
KA0320	cyclic AMP Complete ELISA Kit	0.078 to 20 pmol/mL ²	0.039 pmol/mL ³
KA0321	cyclic GMP Complete ELISA Kit	0.08 to 50 pmol/mL ⁴	0.043 pmol/mL ⁵
KA0311	Cysteinyl Leukotriene ELISA Kit	78.1 to 2,500 pg/mL	26.6 pg/mL
KA0160	Cytochrome c (Human) ELISA Kit	0.08 to 5 ng/mL	0.05 ng/mL
KA0532	DBI (Human) ELISA Kit	25 to 1,600 pg/mL	25 pg/mL
KA0315	DHEA ELISA Kit	12.21 to 50,000 pg/mL	2.9 pg/mL
KA0920	DHEA-S (Human) ELISA Kit	0.1 to 10 ug/mL	0.02 ug/mL
KA0141	DPP4 (Human) ELISA Kit	15.6 to 500 ng/mL	7.26 ng/mL



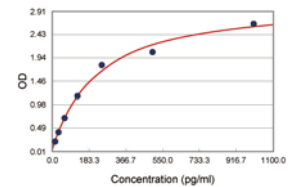
KA0388



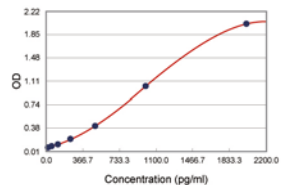
KA0551



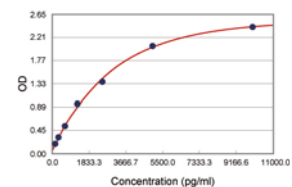
KA0433



KA0384



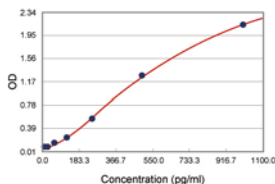
KA0434



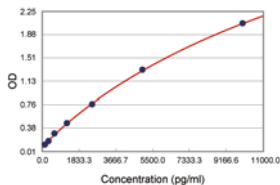
KA0545

Note:

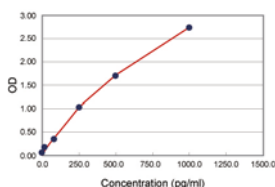
- 0.78 to 200 pmol/mL (non-acetylated) 0.078 to 20 pmol/mL (acetylated)
- Assay Buffer : 0.30 pmol/ml (non-acetylated) 0.039 pmol/ml (acetylated) HCl: 0.39 pmol/ml (non-acetylated) 0.037 pmol/ml (acetylated)
- 0.8 to 500 pmol/mL (non-acetylated) 0.08 to 50 pmol/mL (acetylated)
- Assay Buffer: 0.42 pmol/ml (non-acetylated) 0.043 pmol/ml (acetylated) HCl: 0.604 pmol/ml (non-acetylated) 0.059 pmol/ml (acetylated)



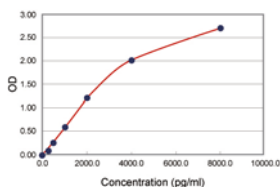
KA0544



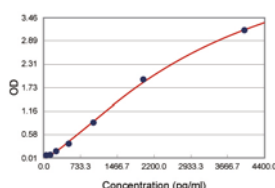
KA0442



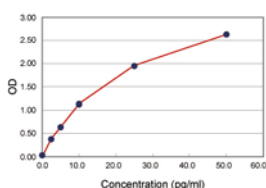
KA0211



KA0527



KA0665



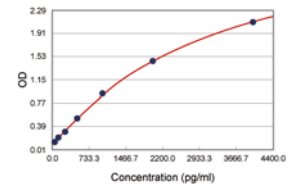
KA0215

ELISA Kits

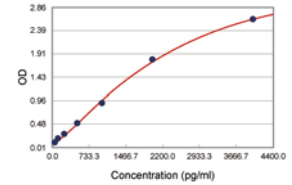
Cat. Num.	Product Name	Calibration Range	Limit of Detection
KA0514	EGF (Human) ELISA Kit	20 to 1,000 pg/mL	20 pg/mL
KA0544	Egf (Mouse) ELISA Kit	15.6 to 1,000 pg/mL	1 pg/mL
KA0442	ENG (Human) ELISA Kit	156 to 10,000 pg/mL	5 pg/mL
KA0175	EPO (Human) ELISA Kit	1.6 to 100 mIU/mL	0.4 mIU/mL
KA0118	ERBB2 (Human) ELISA Kit	0.16 to 10 ng/mL	0.06 ng/mL
KA0116	E-selectin (Human) ELISA Kit	0.8 to 50 ng/mL	0.33 ng/mL
KA0260	E-selectin (Monkey) ELISA Kit	0.9 to 60 U/mL	0.39 U/mL
KA0234	Estradiol (Human) ELISA Kit	0 to 1000 pg/mL	10 pg/mL
KA0316	Estriol ELISA Kit	122 to 500,000 pg/mL	59.6 pg/mL
KA0471	F7 (Human) ELISA Kit	3.13 to 200 ng/mL	6 ng/mL
KA0472	F9 (Human) ELISA Kit	1.56 to 100 ng/mL	1 ng/mL
KA0473	F10 (Human) ELISA Kit	1.56 to 100 ng/mL	1 ng/mL
KA0474	F13 (Human) ELISA Kit	2.5 to 160 ng/mL	50 pg/mL
KA0148	FAS (Human) ELISA Kit	15.6 to 1,000 pg/mL	13.2 pg/mL
KA0159	Fas Ligand (Human) ELISA Kit	0.16 to 10 ng/mL	0.07 ng/mL
KA0134	FCER2 (Human) ELISA Kit	12.5 to 400 U/mL	6.8 U/mL
KA0932	Fentanyl (Canine) ELISA Kit	0.1 to 5 ng/mL	0.1 ng/mL
KA0931	Fentanyl (Human) ELISA Kit	0.5 to 5 ng/mL	0.1 ng/mL
KA0211	Ferritin (Human) ELISA Kit	0 to 1,000 ng/mL	5 ng/mL
KA0527	FGF2 (Human) ELISA Kit	78 to 8,000 pg/mL	78 pg/mL
KA0337	FGF9 (Human) ELISA Kit	62.5 to 4,000 pg/mL	15 pg/mL
KA0475	Fibrinogen (Human) ELISA Kit	0.16 to 40 ug/mL	100 ng/mL
KA0476	Fibrinogen (Human) ELISA Kit	1.25 to 80 ng/mL	500 pg/mL
KA0492	Fibrinogen (Mouse) ELISA Kit	3.13 to 200 ng/mL	2 ng/mL
KA0505	Fibrinogen (Rat) ELISA Kit	3.125 to 200 ng/mL	2 ng/mL
KA0188	Fibronectin (Human) ELISA Kit	0.31 to 20 ng/mL	0.1 ng/mL
KA0162	FLT1 (Human) ELISA Kit	0.16 to 10 ng/mL	29.5 pg/mL
KA0665	FLT1 (Human) ELISA Kit	31.2 to 2,000 pg/mL	4 pg/mL
KA0933	Flunitrazepam ELISA Kit	5 to 25 ng/mL	N/A
KA0491	Fn1 (Mouse) ELISA Kit	3.13 to 200 ng/mL	2 ng/mL
KA0339	Fn1 (Rat) ELISA Kit	156 to 10,000 pg/mL	15 pg/mL
KA0210	Free beta-CG (Human) ELISA Kit	0 to 50 ng/mL	0.25 ng/mL
KA0209	Free PSA (Human) ELISA Kit	0 to 25 ng/mL	0.1 ng/mL
KA0213	FSH (Human) ELISA Kit	0 to 200 mIU/mL	2.5 mIU/mL
KA0305	GAST (Human) ELISA Kit	39.1 to 10,000 pg/mL	7.27 pg/mL
KA0319	Gast (Rat) ELISA Kit	78.1 to 5,000 pg/mL	78.1 pg/mL
KA0479	GC (Human) ELISA Kit	0.025 to 100 ug/mL	20 ng/mL
KA0984	GDNF (Human) ELISA Kit	31.2 to 2,000 pg/mL	4 pg/mL
KA0341	Gdnf (Rat) ELISA Kit	31.2 to 2,000 pg/mL	4 pg/mL
KA0024	GFAP (Human) ELISA Kit	0.25 to 25 ng/mL	0.33 ng/mL
KA0215	GH (Human) ELISA Kit	0 to 50 ng/mL	5 ng/mL
KA0521	GH (Human) High sensitivity ELISA Kit	0.1 to 12 ng/mL	0.1 ng/mL
KA0530	GPX1 (Human) ELISA Kit	1.56 to 100 ng/mL	1.56 ng/mL
KA0318	GSK-3β (total) ELISA Kit	78.1 to 5,000 pg/mL	74.4 pg/mL
KA0186	GZMA (Human) ELISA Kit	0.8 to 600 pg/mL	0.4 pg/mL
KA0187	GZMB (Human) ELISA Kit	0.66 to 480 pg/mL	0.2 pg/mL
KA0343	HGF (Human) ELISA Kit	31.2 to 2,000 pg/mL	5 pg/mL
KA0103	Histone H2A.X Phosphorylation Cellular (Human) ELISA Kit	N/A	N/A
KA0483	HP (Human) ELISA Kit	1.56 to 400 ng/mL	0.3 ng/mL
KA0533	HP (Human) ELISA Kit	0.78 to 50 ng/mL	0.78 ng/mL
KA0481	HPX (Human) ELISA Kit	0.078 to 5 ug/mL	50 ng/mL
KA0482	HPX (Human) ELISA Kit	6.25 to 400 ng/mL	4 ng/mL
KA0981	HSP27 (Human) ELISA Kit	0.078 to 80 ng/mL	0.1 ng/mL
KA0113	ICAM1 (Human) ELISA Kit	6.25 to 100 ng/mL	2.17 ng/mL
KA0261	ICAM1 (Monkey) ELISA Kit	6.25 to 100 U/mL	1.05 U/mL
KA0345	Icam1 (Mouse) ELISA Kit	156 to 10,000 pg/mL	10 pg/mL
KA0346	Icam1 (Rat) ELISA Kit	31.2 to 2,000 pg/mL	2 pg/mL
KA0142	ICAM2 (Human) ELISA Kit	0.75 to 24 U/mL	0.3 U/mL
KA0128	ICAM3 (Human) ELISA Kit	0.8 to 50 ng/mL	0.38 ng/mL
KA0126	IFNA1 (Human) ELISA Kit	7.8 to 500 pg/mL	3.16 pg/mL
KA0135	IFNG (Human) ELISA Kit	1.6 to 100 pg/mL	0.99 pg/mL
KA0242	Ifnγ (Mouse) ELISA Kit	15.6 to 1,000 pg/mL	5.3 pg/mL
KA0282	IFNG (Pig) ELISA Kit	31.3 to 2,000 pg/mL	3.3 pg/mL
KA0273	Ifnγ (Rat) ELISA Kit	31.3 to 2,000 pg/mL	9.9 pg/mL
KA0139	IFNW1 (Human) ELISA Kit	4.7 to 300 pg/mL	1.51 pg/mL

ELISA Kits

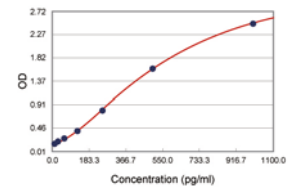
Cat. Num.	Product Name	Calibration Range	Limit of Detection
KA0216	IgE (Human) ELISA Kit	0 to 800 IU/mL	5 IU/mL
KA0349	IGF1 (Human) ELISA Kit	62.5 to 4,000 pg/mL	10 pg/mL
KA0493	Igf1 (Mouse) ELISA Kit	0.16 to 10 ng/mL	0.1 ng/mL
KA0546	Igf1 (Rat) ELISA Kit	62.5 to 4,000 pg/mL	5 pg/mL
KA0350	IGF2 (Human) ELISA Kit	62.5 to 4,000 pg/mL	2 pg/mL
KA0353	IGFBP3 (Human) ELISA Kit	156.2 to 10,000 pg/mL	10 pg/mL
KA0125	IL10 (Human) ELISA Kit	3.2 to 200 pg/mL	0.99 pg/mL
KA0262	IL10 (Monkey) ELISA Kit	3.9 to 250 U/mL	1.32 U/mL
KA0243	IL10 (Mouse) ELISA Kit	15.6 to 1,000 pg/mL	5 pg/mL
KA0274	IL10 (Rat) ELISA Kit	15.6 to 1,000 pg/mL	1.5 pg/mL
KA0526	IL11 (Human) ELISA Kit	4 to 1,600 pg/mL	4 pg/mL
KA0647	IL12 (Human) ELISA Kit	7.8 to 500 pg/mL	7 pg/mL
KA0263	IL-12 (Monkey) ELISA Kit	3.9 to 250 U/mL	1.6 U/mL
KA0244	IL-12 (Mouse) ELISA Kit	15.6 to 1,000 pg/mL	10 pg/mL
KA0143	IL-12 (p70) (Human) ELISA Kit	3.2 to 200 pg/mL	2.1 pg/mL
KA0245	IL-12 total (Mouse) ELISA Kit	31.3 to 2,000 pg/mL	1.9 pg/mL
KA0374	IL12B (Human) ELISA Kit	31.2 to 2,000 pg/mL	2 pg/mL
KA0137	IL13 (Human) ELISA Kit	1.6 to 100 pg/mL	0.73 pg/mL
KA0246	IL13 (Mouse) ELISA Kit	7.8 to 500 pg/mL	2.8 pg/mL
KA0524	IL13RA2 (Human) ELISA Kit	10 to 500 pg/mL	10 pg/mL
KA0376	IL15 (Human) ELISA Kit	15.6 to 1,000 pg/mL	3 pg/mL
KA0520	IL16 (Human) ELISA Kit	20 to 3,200 pg/mL	20 pg/mL
KA0180	IL17A (Human) ELISA Kit	1.6 to 100 pg/mL	0.5 pg/mL
KA0247	IL17a (Mouse) ELISA Kit	7.8 to 500 pg/mL	1.6 pg/mL
KA1001	IL17a (Rat) ELISA Kit	1.6 to 100 pg/mL	1 pg/mL
KA1000	IL17f (Mouse) ELISA Kit	62.5 to 4,000 pg/mL	10 pg/mL
KA0561	IL18 (Human) ELISA Kit	15.6 to 1,000 pg/mL	1 pg/mL
KA0248	IL18 (Mouse) ELISA Kit	31.3 to 2,000 pg/mL	10 pg/mL
KA0283	IL18 (Pig) ELISA Kit	39 to 2,500 pg/mL	23.1 pg/mL
KA0439	IL18 (Rat) ELISA Kit	15.6 to 1,000 pg/mL	1 pg/mL
KA0146	IL1A (Human) ELISA Kit	3.2 to 200 pg/mL	0.66 pg/mL
KA0249	IL1a alpha (Mouse) ELISA Kit	7.8 to 500 pg/mL	3.9 pg/mL
KA0275	IL1a alpha (Rat) ELISA Kit	15.6 to 1,000 pg/mL	4.1 pg/mL
KA0356	IL1B (Human) ELISA Kit	1.56 to 100 pg/mL	0.15 pg/mL
KA0357	IL1b (Mouse) ELISA Kit	7.8 to 500 pg/mL	1 pg/mL
KA0130	IL2 (Human) ELISA Kit	19 to 1,200 pg/mL	9.9 pg/mL
KA0264	IL2 (Monkey) ELISA Kit	19.5 to 1,250 U/mL	9.9 U/mL
KA0250	IL2 (Mouse) ELISA Kit	15.6 to 1,000 pg/mL	5.3 pg/mL
KA0276	IL2 (Rat) ELISA Kit	31.3 to 2,000 pg/mL	9.6 pg/mL
KA0986	IL2 (Rat) ELISA Kit	15.6 to 1,000 pg/mL	1 pg/mL
KA0194	IL21 (Human) ELISA Kit	78 to 5,000 pg/mL	20 pg/mL
KA0195	IL22 (Human) ELISA Kit	31.3 to 2,000 pg/mL	5 pg/mL
KA0251	IL22 (Mouse) ELISA Kit	7.8 to 500 pg/mL	1.6 pg/mL
KA0183	IL-23 (Human) ELISA Kit	78 to 5,000 pg/mL	10 pg/mL
KA0997	IL29 (Human) ELISA Kit	15.6 to 1,000 pg/mL	2 pg/mL
KA0122	IL-2R (Human) ELISA Kit	0.31 to 20 ng/mL	0.27 ng/mL
KA0522	IL2RA (Human) ELISA Kit	10 to 2,000 pg/mL	10 pg/mL
KA0360	IL3 (Human) ELISA Kit	15.6 to 1,000 pg/mL	1 pg/mL
KA0361	IL3 (Mouse) ELISA Kit	7.8 to 500 pg/mL	1 pg/mL
KA0998	IL31 (Human) ELISA Kit	7.8 to 500 pg/mL	1 pg/mL
KA0999	IL33 (Human) ELISA Kit	4 to 250 pg/mL	1 pg/mL
KA0132	IL4 (Human) ELISA Kit	7.8 to 500 pg/mL	1.3 pg/mL
KA0252	IL4 (Mouse) ELISA Kit	3.9 to 250 pg/mL	1.98 pg/mL
KA0277	IL4 (Rat) ELISA Kit	1.6 to 100 pg/mL	0.2 pg/mL
KA0167	IL5 (Human) ELISA Kit	7.8 to 500 pg/mL	1.45 pg/mL
KA0987	IL5 (Human) ELISA Kit	15.6 to 1,000 pg/mL	2 pg/mL
KA0253	IL5 (Mouse) ELISA Kit	7.8 to 500 pg/mL	3.3 pg/mL
KA0123	IL6 (Human) ELISA Kit	1.6 to 100 pg/mL	0.92 pg/mL
KA0265	IL6 (Monkey) ELISA Kit	1.9 to 120 U/mL	1.25 U/mL
KA0254	IL6 (Mouse) ELISA Kit	31.3 to 2,000 pg/mL	7.92 pg/mL
KA0278	IL6 (Rat) ELISA Kit	31.3 to 2,000 pg/mL	12 pg/mL
KA0124	IL6R (Human) ELISA Kit	0.08 to 5 ng/mL	0.01 ng/mL
KA0523	IL6R (Human) ELISA Kit	1.75 to 400 pg/mL	1.75 pg/mL
KA0525	IL7 (Human) ELISA Kit	1.5 to 50 pg/mL	1 pg/mL
KA0115	IL8 (Human) ELISA Kit	15.6 to 1,000 pg/mL	2 pg/mL



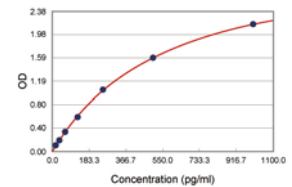
KA0349



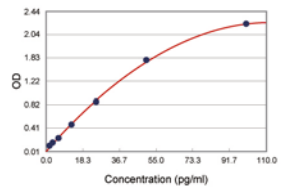
KA0350



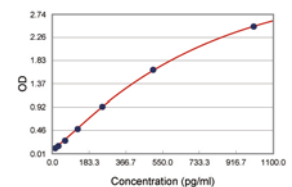
KA0376



KA0561

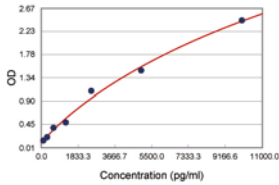


KA0356

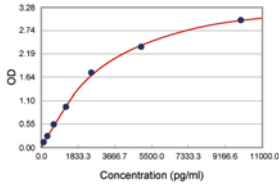


KA0360

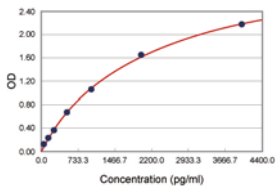
ELISA Kits



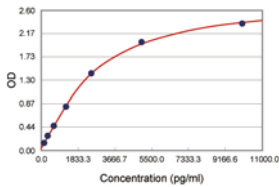
KA0380



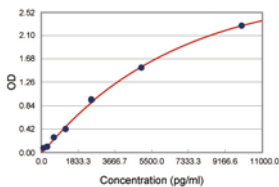
KA0559



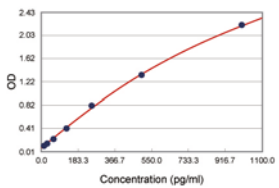
KA0438



KA0391



KA0395



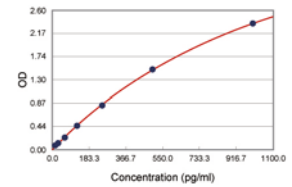
KA0399

ELISA Kits

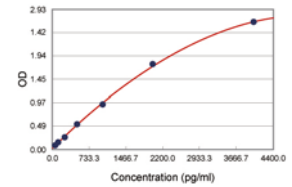
Cat. Num.	Product Name	Calibration Range	Limit of Detection
KA0266	IL8 (Monkey) ELISA Kit	19.5 to 1,250 U/mL	2.5 U/mL
KA0328	INHBA (Human) ELISA Kit	62.5 to 4,000 pg/mL	12 pg/mL
KA0538	Inhba (Mouse) ELISA Kit	62.5 to 4,000 pg/mL	10 pg/mL
KA0539	Inhba (Rat) ELISA Kit	62.5 to 4,000 pg/mL	12 pg/mL
KA0921	Insulin (Human) ELISA Kit	6.25 to 100 uIU/mL	1.467 uIU/mL
KA0477	ITGA2B/ITGB3 (Human) ELISA Kit	1.25 to 40 ng/mL	1 ng/mL
KA0178	L-12/IL-23 p40 (Human) ELISA Kit	31.3 to 2,000 pg/mL	10 pg/mL
KA0380	Laminin (Mouse) ELISA Kit	156 to 10,000 pg/mL	10 pg/mL
KA0379	Laminin (Rat) ELISA Kit	156 to 10,000 pg/mL	10 pg/mL
KA0448	LBP (Human) ELISA Kit	5 to 50 ng/mL	5 ng/mL
KA0449	Lbp (Mouse) ELISA Kit	5 to 50 ng/mL	5 ng/mL
KA0043	LCN2 (Human) ELISA Kit	2 to 100 ng/mL	20 pg/mL
KA0559	Lcn2 (Mouse) ELISA Kit	156 to 10,000 pg/mL	5 pg/mL
KA0560	Lcn2 (Rat) ELISA Kit	156 to 10,000 pg/mL	15 pg/mL
KA0025	LEP (Human) Clinical Range ELISA Kit	1 to 50 ng/mL	0.17 ng/mL
KA0649	LEP (Human) ELISA Kit	0 to 2,000 pg/mL	125 pg/mL
KA0994	Lep (Mouse) ELISA Kit	62.5 to 4,000 pg/mL	10 pg/mL
KA0026	Lep (Mouse/Rat) ELISA Kit	100 to 4,000 pg/mL	30 pg/mL (mouse) 50 pg/mL (rat)
KA0027	LEPR (Human) ELISA Kit	2 to 100 ng/mL	0.4 ng/mL
KA0993	Lgals1 (Mouse) ELISA Kit	156 to 10,000 pg/mL	5 pg/mL
KA0168	LGALS3 (Human) ELISA Kit	0.39 to 25 ng/mL	0.12 ng/mL
KA0140	LGALS3BP (Human) ELISA Kit	12.5 to 200 ng/mL	0.92 ng/mL
KA0214	LH (Human) ELISA Kit	0 to 200 mIU/mL	1 mIU/mL
KA0149	LIFR (Human) ELISA Kit	0.08 to 5 ng/mL	0.052 ng/mL
KA0117	L-selectin (Human) ELISA Kit	0.39 to 25 ng/mL	0.19 ng/mL
KA0438	LTA (Human) ELISA Kit	62.5 to 4,000 pg/mL	5 pg/mL
KA0484	LTF (Human) ELISA Kit	0.625 to 40 ng/mL	0.1 ng/mL
KA0485	LYZ (Human) ELISA Kit	0.313 to 10 ng/mL	0.1 ng/mL
KA0237	MB (Human) ELISA Kit	0 to 1,000 ng/mL	5 ng/mL
KA0028	MDK (Human) ELISA Kit	2 to 10 ng/mL	0.33 ng/mL
KA0934	Methamphetamine ELISA Kit	10 to 50 ng/mL	N/A
KA0557	MICA (Human) ELISA Kit	62.5 to 4,000 pg/mL	10 pg/mL
KA0558	MIF (Human) ELISA Kit	156 to 10,000 pg/mL	20 pg/mL
KA0390	MMP1 (Human) ELISA Kit	156 to 10,000 pg/mL	20 pg/mL
KA0182	MMP13 (Human) ELISA Kit	0.31 to 20 ng/mL	0.18 ng/mL
KA0391	MMP2 (Human) ELISA Kit	156 to 10,000 pg/mL	10 pg/mL
KA0392	Mmp2 (Mouse) ELISA Kit	156 to 10,000 pg/mL	10 pg/mL
KA0393	Mmp2 (Rat) ELISA Kit	156 to 10,000 pg/mL	10 pg/mL
KA0394	MMP3 (Human) ELISA Kit	156 to 10,000 pg/mL	10 pg/mL
KA0395	MMP7 (Human) ELISA Kit	156 to 10,000 pg/mL	6 pg/mL
KA0396	MMP8 (Human) ELISA Kit	156 to 10,000 pg/mL	10 pg/mL
KA0179	MMP9 (Human) ELISA Kit	0.23 to 15 ng/mL	0.05 ng/mL
KA0398	Mmp9 (Mouse) ELISA Kit	156 to 10,000 pg/mL	20 pg/mL
KA0936	Morphine (Canine) Specific ELISA Kit	5 to 25 ng/mL	1 ng/mL
KA0935	Morphine ELISA Kit	5 to 25 ng/mL	N/A
KA0537	MPO (Human) ELISA Kit	0.78 to 50 ng/mL	0.78 ng/mL
KA0095	Nampt (Mouse) ELISA Kit	0.75 to 60 ng/mL	0.24 ng/mL
KA0399	NGF (Human) ELISA Kit	15.6 to 1,000 pg/mL	1 pg/mL
KA0400	Ngf (Mouse) ELISA Kit	31.2 to 2,000 pg/mL	1 pg/mL
KA0401	Ngf (Rat) ELISA Kit	15.6 to 1,000 pg/mL	1 pg/mL
KA0445	Nitrotyrosine ELISA Kit	2.1 nM to 1,500 nM	2 nM
KA0503	Nppa (Rat) ELISA Kit	0.25 to 4 ng/mL	100 pg/mL
KA0504	Nppb (Rat) ELISA Kit	0.031 to 2 ng/mL	10 pg/mL
KA0979	Nppb (Rat) ELISA Kit	0.031 to 1 ng/mL	30 pg/mL
KA0402	NTF3 (Human) ELISA Kit	15.6 to 1,000 pg/mL	2 pg/mL
KA0403	Ntf3 (Mouse) ELISA Kit	15.6 to 1,000 pg/mL	2 pg/mL
KA0404	Ntf3 (Rat) ELISA Kit	15.6 to 1,000 pg/mL	2 pg/mL
KA0996	Ntrk2 (Mouse) ELISA Kit	93.8 to 6,000 pg/mL	5 pg/mL
KA0937	Opiates ELISA Kit	5 to 25 ng/mL	0.25 ng/mL
KA0480	ORM2 (Human) ELISA Kit	0.063 to 4 ug/mL	80 ng/mL
KA0100	PARK7 (Human) ELISA Kit	1.56 to 100 ng/mL	0.55 ng/mL
KA0938	PCP ELISA Kit	2 to 10 ng/mL	500 pg/mL
KA0408	PDGF-AB (Human) ELISA Kit	31.2 to 2,000 pg/mL	2 pg/mL
KA0409	PdGF-ab (Rat) ELISA Kit	31.2 to 2,000 pg/mL	3 pg/mL

ELISA Kits

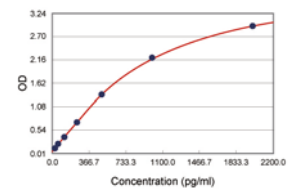
Cat. Num.	Product Name	Calibration Range	Limit of Detection
KA0136	PECAM1 (Human) ELISA Kit	0.48 to 30 ng/mL	0.06 ng/mL
KA0267	PECAM1 (Monkey) ELISA Kit	0.48 to 30 U/mL	0.06 U/mL
KA0324	PGE2 (CLIA) ELISA Kit	7.81 to 1,000 pg/mL	6.03 pg/mL
KA0325	PGE2 (FPIA) ELISA Kit	1562 to 100,000 pg/mL	684 pg/mL
KA0326	PGE2 High Sensitivity ELISA Kit	7.8 to 1,000 pg/mL	8.26 pg/mL
KA0410	PGF (Human) ELISA Kit	15.6 to 1,000 pg/mL	1 pg/mL
KA0310	PGF2α ELISA Kit	3.05 to 50,000 pg/mL	6.71 pg/mL
KA0327	PGF2α High Sensitivity ELISA Kit	1.95 to 2,000 pg/mL	0.98 pg/mL
KA0157	PLAT (Human) ELISA Kit	15.6 to 1,000 pg/mL	6.4 pg/mL
KA0425	PLAU (Human) ELISA Kit	62.5 to 4,000 pg/mL	5 pg/mL
KA0426	PLAUR (Human) ELISA Kit	62.5 to 4,000 pg/mL	4 pg/mL
KA0494	PLG (Human) ELISA Kit	1.25 to 80 ng/mL	1 ng/mL
KA0163	PMN-Elastase (Human) ELISA Kit	0.16 to 10 ng/mL	1.98 ng/mL
KA0112	Poly-Ubiquitinated Protein (Human) ELISA Kit	1.56 to 100 U/mL	1.182 U/mL
KA0536	PRDX1 (Human) ELISA Kit	0.5 to 32 ng/mL	0.5 ng/mL
KA0531	PRDX3 (Human) ELISA Kit	2 to 32 ng/mL	2 ng/mL
KA0923	PrI (Mouse/Rat) ELISA Kit	0.2 to 200 ng/mL	0.2 ng/mL
KA0235	Progesterone (Human) ELISA Kit	0 to 50 ng/mL	0.3 ng/mL
KA0299	Progesterone ELISA Kit	15.62 to 500 pg/mL	8.57 pg/mL
KA0922	Pro-insulin (Human) ELISA Kit	2.6 to 66 pmol/L	0.5 pmol/L
KA0217	Prolactin (Human) ELISA Kit	0 to 200 ng/mL	2 ng/mL
KA0296	Prostaglandin E1 ELISA Kit	4.88 to 5,000 pg/mL	5.58 pg/mL
KA0496	Prothrombin (Human) ELISA Kit	0.13 to 32 ug/mL	130 ng/mL
KA0511	Prothrombin (Human) ELISA Kit	0.313 to 20 ng/mL	300 pg/mL
KA0208	PSA (Human) ELISA Kit	0 to 120 ng/mL	1 ng/mL
KA0268	P-selectin (Monkey) ELISA Kit	0.8 to 50 U/mL	1.3 U/mL
KA0924	PTH (Human) ELISA Kit	N/A	N/A
KA0499	RBP4 (Human) ELISA Kit	6.25 to 400 ng/mL	10 ng/mL
KA0989	RBP4 (Human) ELISA Kit	312 to 20,000 pg/mL	10 pg/mL
KA0500	RCVRN (Human) ELISA Kit	0.078 to 20 ng/mL	50 pg/mL
KA0498	REBNP (Human) ELISA Kit	0.031 to 2 ug/mL	8 ng/mL
KA0034	RETN (Human) ELISA Kit	1 to 50 ng/mL	0.033 ng/mL
KA0192	RETN (Human) ELISA Kit	31.3 to 2,000 pg/mL	3.1 pg/mL
KA0035	Retn (Mouse) ELISA Kit	1 to 100 ng/mL	5 pg/mL
KA0995	Retn (Mouse) ELISA Kit	156 to 10,000 pg/mL	3 pg/mL
KA0036	Retn (Rat) ELISA Kit	0.25 to 20 ng/mL	0.05 ng/mL
KA0091	S100A12 (Human) ELISA Kit	78 to 5,000 pg/mL	0.107 ng/mL
KA0092	S100A4 (Human) ELISA Kit	0.39 to 25 ng/mL	0.28 ng/mL
KA0037	S100B (Human) ELISA Kit	0.05 to 2 ng/mL	5 pg/mL
KA0093	S100P (Human) ELISA Kit	39.0 to 2,500 pg/mL	29 pg/mL
KA0518	SAA (Human) ELISA Kit	1.1 to 80 ng/mL	1.1 ng/mL
KA0020	SCGB1A1 (Human) ELISA Kit	2 to 100 ng/mL	20 pg/mL
KA0548	SELP (Human) ELISA Kit	62.5 to 4,000 pg/mL	5 pg/mL
KA0413	Selp (Mouse) ELISA Kit	62.5 to 4,000 pg/mL	5 pg/mL
KA0154	SELPLG (Human) ELISA Kit	1.6 to 50 U/mL	0.99 U/mL
KA0458	SERPINA1 (Human) ELISA Kit	0.039 to 40 ug/mL	20 ng/mL
KA0459	SERPINA1 (Human) ELISA Kit	0.39 to 100 ng/mL	0.4 ng/mL
KA0456	SERPINC1 (Human) ELISA Kit	3.125 to 200 ng/mL	2 ng/mL
KA0490	Serpinc1 (Mouse) ELISA Kit	1.56 to 400 ng/mL	1 ng/mL
KA0190	SERPINE1 (Human) ELISA Kit	78 to 5,000 pg/mL	29 pg/mL
KA0040	SFTPD (Human) ELISA Kit	1.56 to 100 ng/mL	0.2 ng/mL
KA0528	SOD2 (Human) ELISA Kit	78.12 to 5000 pg/mL	25 pg/mL
KA0529	SOD3 (Human) ELISA Kit	2 to 128 ng/mL	2 ng/mL
KA0407	SPP1 (Human) ELISA Kit	156 to 10,000 pg/mL	10 pg/mL
KA0547	Spp1 (Mouse) ELISA Kit	156 to 10,000 pg/mL	10 pg/mL
KA0312	Spp1 (Rat) ELISA Kit	3.13 to 100 ng/mL	3.03 ng/mL
KA0302	Substance P ELISA Kit	9.76 to 10,000 pg/mL	8.04 pg/mL
KA0199	T3 (Free) (Human) ELISA Kit	0 to 19 pg/mL	0.05 pg/mL
KA0198	T3 (Total) (Human) ELISA Kit	0 to 10 ng/mL	0.2 ng/mL
KA0925	T3 (Total) (Mouse/Rat) ELISA Kit	0.25 to 7.5 ng/mL	0.125 ng/mL
KA0513	T4 (Human) ELISA Kit	0.27 to 18 ug/dL	0.27 ug/dL
KA0200	T4 (Total) (Human) ELISA Kit	0 to 25 ug/dL	0.4 ug/dL
KA0508	TAT Complexes (Human) ELISA Kit	1.48 to 120 ng/mL	1 ng/mL
KA0193	TEK (Human) ELISA Kit	0.16 to 10 ng/mL	0.03 ng/mL
KA0236	Testosterone (Human) ELISA Kit	0 to 18 ng/mL	0.05 ng/mL



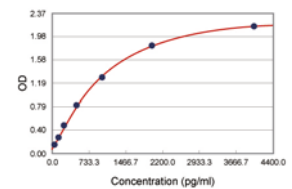
KA0410



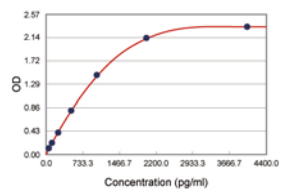
KA0425



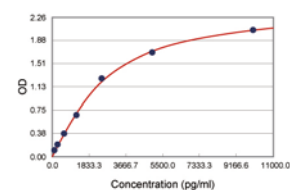
KA0995



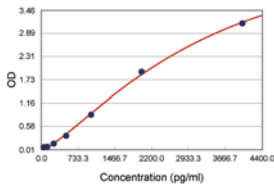
KA0548



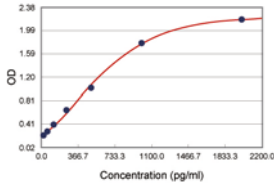
KA0413



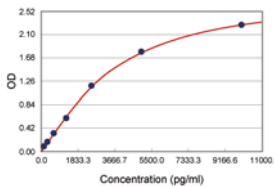
KA0547



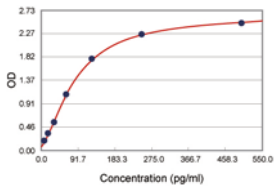
KA0667



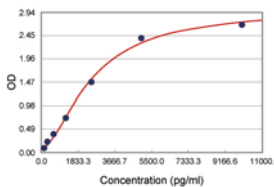
KA0437



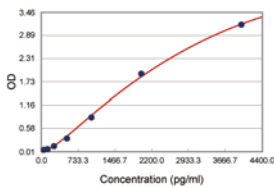
KA0549



KA0424



KA0428



KA0666

ELISA Kits

Cat. Num.	Product Name	Calibration Range	Limit of Detection
KA0309	Testosterone ELISA Kit	7.81 to 2,000 pg/mL	5.67 pg/mL
KA0509	TF (Human) ELISA Kit	0.39 to 25 ug/mL	100 ng/mL
KA0510	TF (Human) ELISA Kit	1.56 to 100 ng/mL	0.2 ng/mL
KA0507	TFPI (Human) ELISA Kit	0.63 to 20 ng/mL	0.5 ng/mL
KA0039	TFRC (Human) ELISA Kit	0.05 to 2 ng/mL	10 ng/mL
KA0151	TGFB1 (Human) ELISA Kit	31.3 to 2,000 pg/mL	9 pg/mL
KA0256	Tgfb1 (Mouse) ELISA Kit	31.3 to 2,000 pg/mL	9 pg/mL
KA0279	Tgfb1 (Rat) ELISA Kit	0.48 to 30 ng/mL	48 pg/mL
KA0416	Tgfb1 (Rat) ELISA Kit	15.6 to 1,000 pg/mL	1 pg/mL
KA0153	TGFB2 (Human) ELISA Kit	31.3 to 1,000 pg/mL	6.6 pg/mL
KA0667	THBS2 (Human) ELISA Kit	156 to 10,000 pg/mL	5 pg/mL
KA0294	Thromboxane B2 ELISA Kit	13.7 to 10,000 pg/mL	10.54 pg/mL
KA0181	TIMP1 (Human) ELISA Kit	39 to 2,500 pg/mL	10 pg/mL
KA0437	Timp1 (Rat) ELISA Kit	31.2 to 2,000 pg/mL	3 pg/mL
KA0549	TIMP2 (Human) ELISA Kit	156 to 10,000 pg/mL	2 pg/mL
KA0420	TIMP3 (Human) ELISA Kit	156 to 10,000 pg/mL	2 pg/mL
KA0506	Tissue Factor (Human) ELISA Kit	25 to 800 pg/mL	10 pg/mL
KA0191	TNF (Human) ELISA Kit	23 to 1,500 pg/mL	5 pg/mL
KA0648	TNF (Human) ELISA Kit	0 to 500 pg/mL	7 pg/mL
KA0257	Tnf (Mouse) ELISA Kit	15.6 to 1,000 pg/mL	3 pg/mL
KA0280	Tnf (Rat) ELISA Kit	39 to 2,500 pg/mL	11.2 pg/mL
KA0270	TNF-R I (Monkey) ELISA Kit	0.09 to 6 U/mL	0.05 U/mL
KA0030	TNFRSF11B (Human) ELISA Kit	1.5 to 60 pmol/L	0.13 pmol/L
KA0406	Tnfrsf11b (Mouse) ELISA Kit	93.8 to 6,000 pg/mL	5 pg/mL
KA0114	TNFRSF1A (Human) ELISA Kit	0.08 to 5 ng/mL	53 pg/mL
KA0121	TNFRSF1A (Human) ELISA Kit	0.16 to 10 ng/mL	0.09 ng/mL
KA0424	TNFRSF1B (Human) ELISA Kit	7.8 to 500 pg/mL	2 pg/mL
KA0145	TNFRSF8 (Human) ELISA Kit	1.6 to 100 ng/mL	0.33 ng/mL
KA0171	TNFRSF9 (Human) ELISA Kit	0.8 to 50 ng/mL	0.2 ng/mL
KA0176	TNFSF10 (Human) ELISA Kit	15.6 to 1,000 pg/mL	5.4 pg/mL
KA0990	TNFSF10 (Human) ELISA Kit	15.6 to 1,000 pg/mL	1 pg/mL
KA0177	TNFSF13 (Human) ELISA Kit	0.8 to 50 ng/mL	0.4 ng/mL
KA0174	TNFSF8 (Human) ELISA Kit	1.6 to 100 ng/mL	0.5 ng/mL
KA0550	Tnfsf8 (Mouse) ELISA Kit	15.6 to 1,000 pg/mL	1 pg/mL
KA0108	Total p53 (Human) ELISA Kit	1.56 to 100 U/mL	1.335 U/mL
KA0155	TP53 (Human) ELISA Kit	0.8 to 50 U/mL	0.33 U/mL
KA0110	TP53 (phospho S392) (Human) ELISA Kit	1.56 to 100 U/mL	1.413 U/mL
KA0109	TP53 (phospho S46) (Human) ELISA Kit	1.56 to 100 U/mL	1.450 U/mL
KA0418	Tpo (Mouse) ELISA Kit	31.2 to 2,000 pg/mL	5 pg/mL
KA0233	Troponin I (Human) ELISA Kit	0 to 75 ng/mL	1 ng/mL
KA0196	TSH (Human) ELISA Kit	0 to 25 uIU/mL	0.2 uIU/mL
KA0515	TSH (Human) ELISA Kit	0.2 to 40 uIU/mL	0.2 uIU/mL
KA0516	TSH (Human) ELISA Kit	0.77 to 150 uIU/mL	0.77 uIU/mL
KA0197	TSH (Human) High Sensitive ELISA Kit	0 to 10 uIU/mL	0.07 uIU/mL
KA0517	TSH (Human) High sensitivity ELISA Kit	0.05 to 12 uIU/mL	0.05 uIU/mL
KA0495	TTR (Human) ELISA Kit	0.12 to 125 ng/mL	1 ng/mL
KA0535	TXN (Human) ELISA Kit	0.39 to 25 ng/mL	0.39 ng/mL
KA0534	TXNRD1 (Human) ELISA Kit	0.39 to 25 ng/mL	0.39 ng/mL
KA0304	Urinary Prostacyclin ELISA Kit	7.81 to 2,000 pg/mL	6.58 pg/mL
KA0138	VCAM1 (Human) ELISA Kit	3.2 to 100 ng/mL	0.59 ng/mL
KA0428	Vcam1 (Mouse) ELISA Kit	156 to 10,000 pg/mL	5 pg/mL
KA0650	VEGF (Human) ELISA Kit	9 to 700 pg/mL	5 pg/mL
KA0166	VEGFA (Human) ELISA Kit	15.6 to 1,000 pg/mL	7.9 pg/mL
KA0258	Vegfa (Mouse) ELISA Kit	62.5 to 4,000 pg/mL	20 pg/mL
KA0430	Vegfa (Rat) ELISA Kit	15.6 to 1,000 pg/mL	1 pg/mL
KA0173	VEGFC (Human) ELISA Kit	0.23 to 15 ng/mL	0.057 ng/mL
KA0666	VEGFC (Human) ELISA Kit	31.2 to 2,000 pg/mL	2 pg/mL
KA0512	VWF (Human) ELISA Kit	2.5 to 80 mU/mL	1 mU/mL
KA0314	11-dehydro-TXB2 ELISA Kit	9.8 to 10,000 pg/mL	4.31 pg/mL
KA0306	12(S)-HETE ELISA Kit	195 to 50,000 pg/mL	146 pg/mL
KA0317	13(S)-HODE ELISA Kit	3.9 to 1,000 ng/mL	1.6 ng/mL
KA0307	15(S)-HETE ELISA Kit	78.1 to 20,000 pg/mL	69.21 pg/mL
KA0303	15-deoxy-Δ12,14-PGJ2 ELISA Kit	195 to 200,000 pg/mL	36.8 pg/mL
KA0297	17β-Estradiol ELISA Kit	29.3 to 30,000 pg/mL	28.5 pg/mL
KA0295	6-keto-PGF1α ELISA Kit	3.2 to 50,000 pg/mL	1.40 pg/mL

ELISA Kits

Cat. Num.	Product Name	Calibration Range	Limit of Detection
KA0443	8-Epi-Prostaglandin F2 alpha ELISA Kit	0.1 to 100 ng/mL	0.1 ng/mL
KA0444	8-hydroxy-2'-deoxyguanosine ELISA Kit	0.5 to 200 ng/mL	N/A
KA0298	8-iso-PGF2 α ELISA Kit	6.1 to 100,000 pg/mL	16.3 pg/mL
KA0313	8-iso-PGF2 α ELISA Kit	160 to 100,000 pg/mL	103.2 pg/mL

Autoimmune Disease ELISA Kits

Cat. Num.	Product Name	Suitable Samples	Label	Detection Methods
KA0939	ANA (Human) IgG ELISA Kit	Serum, Plasma	HRP-conjugate	Colorimetric
KA0940	Cardiolipin IgA ELISA Kit	Serum, Plasma	HRP-conjugate	Colorimetric
KA0941	Cardiolipin IgG ELISA Kit	Serum, Plasma	HRP-conjugate	Colorimetric
KA0942	Cardiolipin IgM ELISA Kit	Serum, Plasma	HRP-conjugate	Colorimetric
KA0943	Cardiolipin Total Antibody ELISA Kit	Serum, Plasma	HRP-conjugate	Colorimetric
KA0944	dsDNA IgG ELISA Kit	Serum, Plasma	HRP-conjugate	Colorimetric
KA0945	Mitochondrial IgG ELISA Kit	Serum, Plasma	HRP-conjugate	Colorimetric
KA0946	RNP/Sm (Human) IgG ELISA Kit	Serum, Plasma	HRP-conjugate	Colorimetric
KA0947	Scl-70 (Human) ELISA Kit	Serum, Plasma	HRP-conjugate	Colorimetric
KA0948	Sm (Human) IgG ELISA Kit	Serum, Plasma	HRP-conjugate	Colorimetric
KA0949	SSA (Ro) (Human) IgG ELISA Kit	Serum, Plasma	HRP-conjugate	Colorimetric
KA0950	SSB (La) (Human) IgG ELISA Kit	Serum, Plasma	HRP-conjugate	Colorimetric
KA0951	Thyroglobulin Antibody ELISA Kit	Serum, Plasma	HRP-conjugate	Colorimetric
KA0952	Thyroid Peroxidase IgG ELISA Kit	Serum, Plasma	HRP-conjugate	Colorimetric

Infectious Disease ELISA Kits

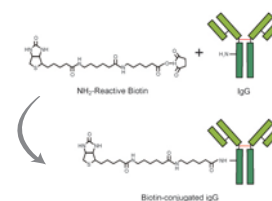
Cat. Num.	Product Name	Suitable Samples	Label	Detection Methods
KA0953	Anthrax protective antigen IgG ELISA Kit	Serum	HRP-conjugate	Colorimetric
KA0954	Brucella IgG ELISA Kit	Serum, Plasma	HRP-conjugate	Colorimetric
KA0955	Brucella IgM ELISA Kit	Serum, Plasma	HRP-conjugate	Colorimetric
KA0956	Chlamydia Pneumoniae IgG ELISA Kit	Serum, Plasma	HRP-conjugate	Colorimetric
KA0957	Chlamydia Pneumoniae IgM ELISA Kit	Serum, Plasma	HRP-conjugate	Colorimetric
KA0958	Chlamydia Trachomatis IgA ELISA Kit	Serum, Plasma	HRP-conjugate	Colorimetric
KA0959	Chlamydia Trachomatis IgG ELISA Kit	Serum, Plasma	HRP-conjugate	Colorimetric
KA0960	Chlamydia Trachomatis IgM ELISA Kit	Serum, Plasma	HRP-conjugate	Colorimetric
KA0227	Cytomegalovirus IgG ELISA Kit	Serum	HRP-conjugate	Colorimetric
KA0228	Cytomegalovirus IgM ELISA Kit	Serum	HRP-conjugate	Colorimetric
KA0961	Dengue virus IgG ELISA Kit	Serum, Plasma	HRP-conjugate	Colorimetric
KA0962	Dengue virus IgM ELISA Kit	Serum, Plasma	HRP-conjugate	Colorimetric
KA0963	Epstein Barr Virus VCA IgA ELISA Kit	Serum, Plasma	HRP-conjugate	Colorimetric
KA0653	Epstein Barr Virus IgG ELISA Kit	Serum, Plasma	HRP-conjugate	Colorimetric
KA0654	Epstein Barr Virus IgM ELISA Kit	Serum, Plasma	HRP-conjugate	Colorimetric
KA0964	H. pylori IgA ELISA Kit	Serum, Plasma	HRP-conjugate	Colorimetric
KA0220	H. pylori IgG (Quantitative) ELISA Kit	Serum	HRP-conjugate	Colorimetric
KA0219	H. pylori IgG ELISA Kit	Serum	HRP-conjugate	Colorimetric
KA0221	H. pylori IgM ELISA Kit	Serum	HRP-conjugate	Colorimetric
KA0290	HBeAg and HBeAg antibody ELISA Kit	Serum, Plasma	HRP-conjugate	Colorimetric
KA0284	Hepatitis A virus antibody ELISA Kit	Serum, Plasma	HRP-conjugate	Colorimetric
KA0285	Hepatitis A virus IgM ELISA Kit	Serum, Plasma	HRP-conjugate	Colorimetric
KA0287	Hepatitis B surface antigen antibody ELISA Kit	Serum, Plasma	HRP-conjugate	Colorimetric
KA0286	Hepatitis B surface antigen ELISA Kit	Serum, Plasma	HRP-conjugate	Colorimetric
KA0288	Hepatitis B virus core antigen antibody ELISA Kit	Serum, Plasma	HRP-conjugate	Colorimetric
KA0289	Hepatitis B virus IgM ELISA Kit	Serum, Plasma	HRP-conjugate	Colorimetric
KA0291	Hepatitis C virus antibody ELISA Kit	Serum, Plasma	HRP-conjugate	Colorimetric
KA0450	Hepatitis E virus IgG ELISA Kit	Serum, Plasma	HRP-conjugate	Colorimetric
KA0451	Hepatitis E virus IgM ELISA Kit	Serum, Plasma	HRP-conjugate	Colorimetric
KA0229	Herpes Simplex Virus I IgG ELISA Kit	Serum	HRP-conjugate	Colorimetric
KA0230	Herpes Simplex Virus I IgM ELISA Kit	Serum	HRP-conjugate	Colorimetric

Infectious Disease ELISA Kits

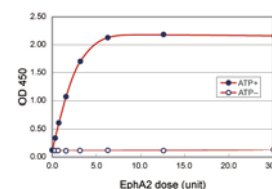
Cat. Num.	Product Name	Suitable Samples	Label	Detection Methods
KA0651	Herpes Simplex Virus I/II IgG ELISA Kit	Serum, Plasma	HRP-conjugate	Colorimetric
KA0652	Herpes Simplex Virus I/II IgM ELISA Kit	Serum, Plasma	HRP-conjugate	Colorimetric
KA0231	Herpes Simplex Virus II IgG ELISA Kit	Serum	HRP-conjugate	Colorimetric
KA0232	Herpes Simplex Virus II IgM ELISA Kit	Serum	HRP-conjugate	Colorimetric
KA0452	HIV-1 p24 ELISA Kit	Tissue, Cell culture supernatants	HRP-conjugate	Colorimetric
KA0292	HIV-1/2 antibody ELISA Kit	Serum, Plasma	HRP-conjugate	Colorimetric
KA0453	HIV-1/2 antibody ELISA Kit	Serum, Plasma	HRP-conjugate	Colorimetric
KA0655	Measles IgG ELISA kit	Serum, Plasma	HRP-conjugate	Colorimetric
KA0656	Measles IgM ELISA kit	Serum, Plasma	HRP-conjugate	Colorimetric
KA0657	Mumps IgG ELISA kit	Serum, Plasma	HRP-conjugate	Colorimetric
KA0658	Mumps IgM ELISA kit	Serum, Plasma	HRP-conjugate	Colorimetric
KA0659	Mycoplasma pneumoniae IgG ELISA kit	Serum, Plasma	HRP-conjugate	Colorimetric
KA0660	Mycoplasma pneumoniae IgM ELISA kit	Serum, Plasma	HRP-conjugate	Colorimetric
KA0223	Rubella IgG ELISA Kit	Serum	HRP-conjugate	Colorimetric
KA0224	Rubella IgM ELISA Kit	Serum	HRP-conjugate	Colorimetric
KA0965	Salmonella IgG ELISA Kit	Serum, Plasma	HRP-conjugate	Colorimetric
KA0966	Salmonella IgM ELISA Kit	Serum, Plasma	HRP-conjugate	Colorimetric
KA0967	Toxoplasma IgA ELISA Kit	Serum, Plasma	HRP-conjugate	Colorimetric
KA0225	Toxoplasma IgG ELISA Kit	Serum	HRP-conjugate	Colorimetric
KA0226	Toxoplasma IgM ELISA Kit	Serum	HRP-conjugate	Colorimetric
KA0968	Treponima pallidum IgG ELISA Kit	Serum, Plasma	HRP-conjugate	Colorimetric
KA0969	Treponima pallidum IgM ELISA Kit	Serum, Plasma	HRP-conjugate	Colorimetric
KA0970	Treponima pallidum Total ELISA Kit	Serum, Plasma	HRP-conjugate	Colorimetric
KA0661	Varicella Zoster IgG ELISA kit	Serum, Plasma	HRP-conjugate	Colorimetric
KA0662	Varicella Zoster IgM ELISA kit	Serum, Plasma	HRP-conjugate	Colorimetric

Ab Labeling Kits

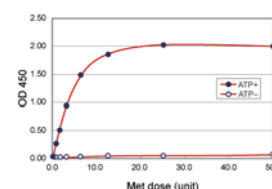
Cat. Num.	Product Name	Cat. Num.	Product Name
KA0001	Alkaline Phosphatase Labeling Kit-NH2	KA0009	Fluorescein Labeling Kit - NH2
KA0002	Alkaline Phosphatase Labeling Kit-SH	KA0010	HiLyte Fluor 555 Labeling Kit-NH2
KA0005	Allophycocyanin Labeling Kit-NH2	KA0011	HiLyte Fluor 647 Labeling Kit-NH2
KA0006	Allophycocyanin Labeling Kit-SH	KA0014	Peroxidase Labeling Kit-NH2
KA0003	Biotin Labeling Kit-NH2	KA0015	Peroxidase Labeling Kit-SH
KA0004	Biotin Labeling Kit-SH	KA0012	R-Phycoerythrin Labeling Kit-NH2
KA0007	B-Phycoerythrin Labeling Kit-NH2	KA0013	R-Phycoerythrin Labeling Kit-SH
KA0008	B-Phycoerythrin Labeling Kit-SH		



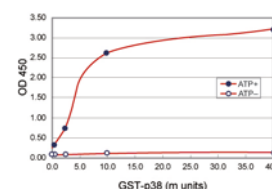
KA0003



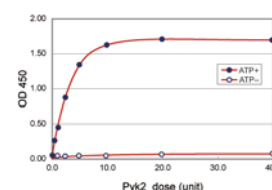
KA0061



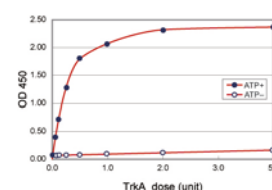
KA0055



KA0077



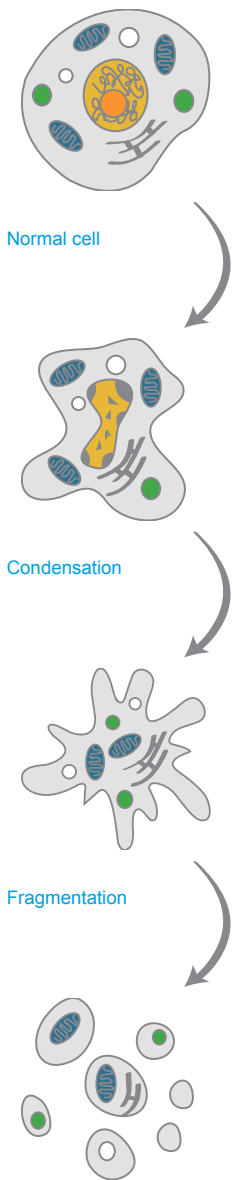
KA0056



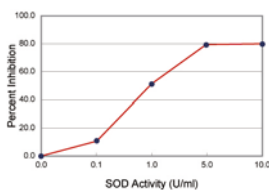
KA0060

Activity Assay Kits

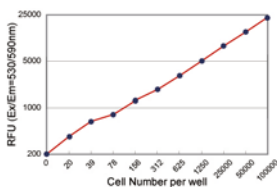
Cat. Num.	Product Name
KA0070	AKT/PKB Kinase (Human) Assay/Inhibitor Screening Kit
KA0067	Aurora A Kinase (Human) Assay/Inhibitor Screening Kit
KA0074	Aurora Family Kinase (Human) Assay/Inhibitor Screening Kit
KA0073	CaM-kinase II (Human) Assay Kit
KA0066	Cdc2-Cyclin B Kinase (Human) Assay Kit
KA0101	Cellular Histone Acetylation (Human) Assay Kit
KA0064	Checkpoint Kinase (Human) Assay/Inhibitor Screening Assay Kit
KA0071	CK2 Kinase (Human) Assay/Inhibitor Screening Assay Kit
KA0323	COX Activity Kit
KA0058	c-Src Kinase (Human) Assay/Inhibitor Screening Assay Kit
KA0063	Cyclic GMP dependent protein kinase (cGK) (Human) Assay Kit
KA0061	EphA2 Kinase (Human) Assay/Inhibitor Screening Assay Kit
KA0972	F10 (Human) Chromogenic Activity Assay Kit
KA0971	F7 (Human) Chromogenic Activity Assay Kit
KA0057	FGFR2 Kinase (Human) Assay/Inhibitor Screening Assay Kit
KA0107	HDAC8 Deacetylase Fluorometric (Human) Assay Kit
KA0104	HDACs Deacetylase Fluorometric (Human) Assay Kit
KA0078	IKK alpha and beta Kinase (Human) Assay/Inhibitor Screening Assay Kit
KA0068	MAPKAP-kinase 2 (Human) Assay/Inhibitor Screening Assay Kit
KA0055	Met Kinase (Human) Assay/Inhibitor Screening Assay Kit
KA0079	Mps1/TTK kinase (Human) Assay/Inhibitor Screening Assay Kit
KA0077	p38 Kinase (Human) Assay/Inhibitor Screening Assay Kit
KA0059	p56Lck Kinase (Human) Assay/Inhibitor Screening Assay Kit
KA0080	PDK1 Kinase (Human) Assay/Inhibitor Screening Assay Kit
KA0069	Pim-1 Kinase (Human) Assay/Inhibitor Screening Assay Kit
KA0075	PKC Super Family Kinase (Human) Assay Kit
KA0974	PLAT (Human) Chromogenic Activity Assay Kit
KA0976	PLAU (Human) Chromogenic Activity Assay Kit (Direct Assay)
KA0977	PLAU (Human) Chromogenic Activity Assay Kit (Indirect Assay)
KA0065	Polo-like kinase 1 (Human) Assay/Inhibitor Screening Assay Kit
KA0076	Polo-like kinase 3 (Human) Assay/Inhibitor Screening Assay Kit
KA0086	Protein Phosphatase Cdc25 Combo Fluorometric (Human) Assay Kit
KA0083	Protein Phosphatase Cdc25A Fluorometric (Human) Assay Kit
KA0084	Protein Phosphatase Cdc25B Fluorometric (Human) Assay Kit
KA0085	Protein Phosphatase Cdc25C Fluorometric (Human) Assay Kit
KA0087	Protein Phosphatase Cdi1/KAP Fluorometric (Human) Assay Kit
KA0088	Protein Phosphatase LMW-PTP/ACP1 Fluorometric (Human) Assay Kit
KA0081	Protein Tyrosine Phosphatase 1B (PTP1B) Fluorometric (Human) Assay Kit
KA0056	Pyk2 Kinase (Human) Assay/Inhibitor Screening Assay Kit
KA0062	Rho-kinase (Human) Assay Kit
KA0973	SERPINE1 (Human) Chromogenic Activity Assay Kit
KA0105	SIRT1/Sir2 Deacetylase Fluorometric (Human) Assay Kit
KA0106	SIRT3 Deacetylase Fluorometric (Human) Assay Kit
KA0082	T Cell Protein Tyrosine Phosphatase (TC-PTP) Fluorometric (Human) Assay Kit
KA0975	TF (Human) Chromogenic Activity Assay Kit
KA0060	TrkA Kinase (Human) Assay/Inhibitor Screening Assay Kit
KA0218	Visual hCG Pregnancy Kit
KA0072	Wee1 Kinase (Human) Assay/Inhibitor Screening Assay Kit



Apoptotic bodies



KA0783



KA0897

Apoptosis Assay Kits

Cat. Num.	Product Name	Cat. Num.	Product Name
KA0709	Annexin V-Biotin Apoptosis Kit	KA0746	Caspase-4 Assay Kit (Fluorometric)
KA0710	Annexin V-Cy3 Apoptosis Kit	KA0747	Caspase-4 Inhibitor Screening Kit
KA0711	Annexin V-Cy3 Apoptosis Kit (Premium)	KA0748	Caspase-5 Assay Kit (Colorimetric)
KA0712	Annexin V-Cy5 Apoptosis Kit	KA0749	Caspase-5 Assay Kit (Fluorometric)
KA0713	Annexin V-EGFP Apoptosis Kit	KA0750	Caspase-5 Inhibitor Screening Kit
KA0714	Annexin V-FITC Apoptosis Kit	KA0751	Caspase-6 Assay Kit (Colorimetric)
KA0715	Annexin V-FITC Apoptosis Kit (Premium)	KA0752	Caspase-6 Assay Kit (Fluorometric)
KA0716	Annexin V-PE Apoptosis Detection Kit	KA0753	Caspase-6 Inhibitor Screening Kit
KA0717	Annexin V-PE Apoptosis Detection Kit (Premium)	KA0754	Caspase-7 Immunoassay Kit
KA0718	Annexin V-PE-Cy5 Apoptosis Detection Kit	KA0755	Caspase-7 Inhibitor Screening Kit
KA0719	Apoptotic Cell Isolation Kit	KA0756	Caspase-8 Assay Kit (Colorimetric)
KA0720	Apoptotic DNA Ladder Detection Kit	KA0757	Caspase-8 Assay Kit (Fluorometric)
KA0721	Apoptotic DNA Ladder Detection Kit (Premium)	KA0758	Caspase-8 Inhibitor Screening Kit
KA0722	Apoptotic DNA Ladder Isolation Kit	KA0759	Caspase-8 Staining Kit (Green)
KA0723	Calpain Activity Assay Kit	KA0760	Caspase-8 Staining Kit (Red)
KA0724	Caspase Screening Kit	KA0761	Caspase-9 Assay Kit (Colorimetric)
KA0725	Caspase Staining Kit (Green)	KA0762	Caspase-9 Assay Kit (Fluorometric)
KA0726	Caspase Staining Kit (Red)	KA0763	Caspase-9 Inhibitor Screening Kit
KA0727	Caspase-1 Assay Kit (Colorimetric)	KA0764	Caspase-9 Staining Kit (Green)
KA0728	Caspase-1 Assay Kit (Fluorometric)	KA0765	Caspase-9 Staining Kit (Red)
KA0729	Caspase-1 Inhibitor Screening Kit	KA0766	Cathepsin B Activity Assay Kit
KA0730	Caspase-10 Assay Kit (Colorimetric)	KA0767	Cathepsin D Activity Assay Kit
KA0731	Caspase-10 Assay Kit (Fluorometric)	KA0768	Cathepsin H Activity Assay Kit
KA0732	Caspase-10 Inhibitor Screening Kit	KA0769	Cathepsin K Activity Assay Kit
KA0733	Caspase-12 Assay Kit (Fluorometric)	KA0770	Cathepsin L Activity Assay Kit
KA0734	Caspase-12 Staining Kit (Green)	KA0771	Cathepsin S Activity Assay Kit
KA0735	Caspase-2 Assay Kit (Colorimetric)	KA0781	Cell Proliferation Assay Kit II
KA0736	Caspase-2 Assay Kit (Fluorometric)	KA0772	Cytochrome c Apoptosis Detection Kit
KA0737	Caspase-2 Inhibitor Screening Kit	KA0773	In Situ BrdU DNA Fragmentation Assay Kit
KA0738	Caspase-2 Staining Kit (Green)	KA0775	In Situ BrdU DNA Fragmentation Assay Kit (IHC)
KA0740	Caspase-3 Assay Kit (Colorimetric)	KA0776	In Situ BrdU DNA Fragmentation Assay Kit (Red)
KA0741	Caspase-3 Assay Kit (Fluorometric)	KA0774	In Situ DNA Fragmentation Assay Kit
KA0739	Caspase-3 Immunoassay Kit	KA0777	Mitochondria/Cytosol Fractionation Kit
KA0742	Caspase-3 Inhibitor Screening Kit	KA0778	Mitochondrial Apoptosis Detection Kit
KA0743	Caspase-3 Staining Kit (Green)	KA0895	Mitochondrial DNA Isolation Kit
KA0744	Caspase-3 Staining Kit (Red)	KA0779	Trypsin Activity Assay Kit
KA0745	Caspase-4 Assay Kit (Colorimetric)		

Cell Damage and Oxidative Stress Assay Kits

Cat. Num.	Product Name	Cat. Num.	Product Name
KA0784	DNA Damage Quantification Kit	KA0789	HDAC Inhibitor Drug Screening Kit
KA0782	HAT Activity Assay Kit	KA0785	LDH-Cytotoxicity Assay Kit
KA0788	HDAC Activity Assay Kit (Colorimetric)	KA0786	LDH-Cytotoxicity Assay Kit II
KA0787	HDAC Activity Assay Kit (Fluorometric)	KA0783	Superoxide Dismutase Activity Assay Kit

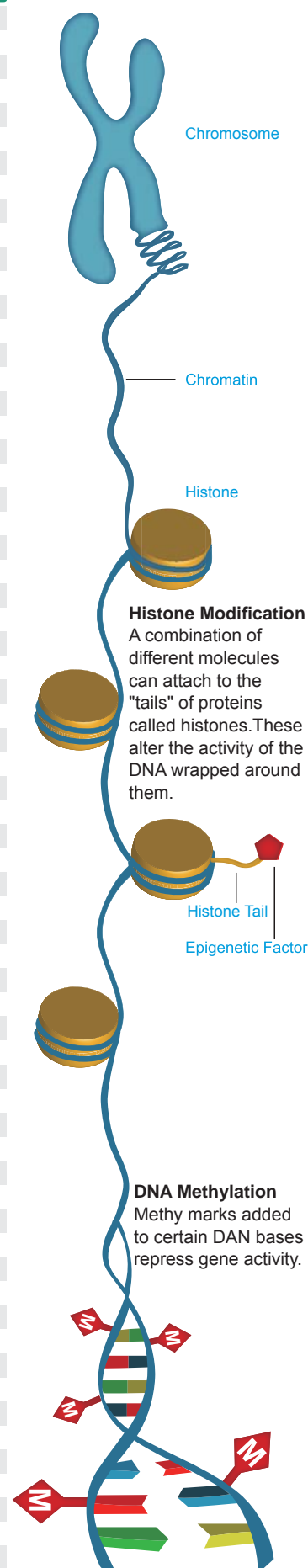
Cell Proliferation and Cytotoxicity Assay Kits

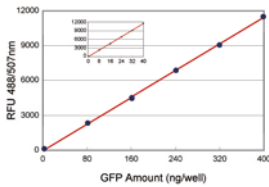
Cat. Num.	Product Name	Cat. Num.	Product Name
KA0898	Bioluminescence Cytotoxicity Assay Kit	KA0901	Live-Dead Cell Staining Kit
KA0897	Fluorescence Cell Viability Assay	KA0899	Senescence Detection Kit

Epigenetic Assay Kits

Cat. Num.	Product Name
KA0293	Cellular UV DNA-Damage Detection Kit
KA0677	DNA Demethylase Activity/Inhibition Assay Kit
KA0678	DNA Methyltransferase 1 Activity/Inhibitor Screening Assay Kit
KA0679	DNA Methyltransferase 3B Activity/Inhibitor Screening Assay Kit
KA0680	DNA Methyltransferase Activity/Inhibition Assay Kit (Colorimetric)
KA0681	DNA Methyltransferase Activity/Inhibition Assay Kit (Fluorometric)
KA0682	DNMT1 Assay Kit
KA0683	DNMT3A Assay Kit
KA0684	DNMT3B Assay Kit
KA0637	Global Acetyl Histone H3-K14 Quantification Kit (Colorimetric)
KA0638	Global Acetyl Histone H3-K14 Quantification Kit (Fluorometric)
KA0639	Global Acetyl Histone H3-K18 Quantification Kit (Colorimetric)
KA0640	Global Acetyl Histone H3-K18 Quantification Kit (Fluorometric)
KA0641	Global Acetyl Histone H3-K23 Quantification Kit (Colorimetric)
KA0642	Global Acetyl Histone H3-K23 Quantification Kit (Fluorometric)
KA0643	Global Acetyl Histone H3-K36 Quantification Kit (Colorimetric)
KA0644	Global Acetyl Histone H3-K36 Quantification Kit (Fluorometric)
KA0645	Global Acetyl Histone H3-K56 Quantification Kit (Colorimetric)
KA0646	Global Acetyl Histone H3-K56 Quantification Kit (Fluorometric)
KA0635	Global Acetyl Histone H3-K9 Quantification Kit (Colorimetric)
KA0636	Global Acetyl Histone H3-K9 Quantification Kit (Fluorometric)
KA0602	Global Di-Methyl Histone H3-K27 Quantification Kit (Colorimetric)
KA0603	Global Di-Methyl Histone H3-K27 Quantification Kit (Fluorometric)
KA0610	Global Di-Methyl Histone H3-K36 Quantification Kit (Colorimetric)
KA0611	Global Di-Methyl Histone H3-K36 Quantification Kit (Fluorometric)
KA0584	Global Di-Methyl Histone H3-K4 Quantification Kit (Colorimetric)
KA0585	Global Di-Methyl Histone H3-K4 Quantification Kit (Fluorometric)
KA0618	Global Di-Methyl Histone H3-K79 Quantification Kit (Colorimetric)
KA0619	Global Di-Methyl Histone H3-K79 Quantification Kit (Fluorometric)
KA0594	Global Di-Methyl Histone H3-K9 Quantification Kit (Colorimetric)
KA0595	Global Di-Methyl Histone H3-K9 Quantification Kit (Fluorometric)
KA0673	Global DNA Methylation Quantification Kit
KA0674	Global DNA Methylation Quantification Kit (Ultra)
KA0703	Global Histone H3 Phosphorylation (Ser10) Assay Kit (Colorimetric)
KA0704	Global Histone H3 Phosphorylation (Ser10) Assay Kit (Fluorometric)
KA0705	Global Histone H3 Phosphorylation (Ser28) Assay Kit (Colorimetric)
KA0706	Global Histone H3 Phosphorylation (Ser28) Assay Kit (Fluorometric)
KA0582	Global Histone H3-K27 Methylation Assay Kit
KA0583	Global Histone H3-K27 Tri-Methylation Assay Kit
KA0580	Global Histone H3-K4 Methylation Assay Kit
KA0581	Global Histone H3-K9 Methylation Assay Kit
KA0633	Global Histone H4 Acetylation Assay Kit
KA0634	Global Histone H4 Acetylation Assay Kit
KA0600	Global Mono-Methyl Histone H3-K27 Quantification Kit (Colorimetric)
KA0601	Global Mono-Methyl Histone H3-K27 Quantification Kit (Fluorometric)
KA0608	Global Mono-Methyl Histone H3-K36 Quantification Kit (Colorimetric)
KA0609	Global Mono-Methyl Histone H3-K36 Quantification Kit (Fluorometric)
KA0586	Global Mono-Methyl Histone H3-K4 Quantification Kit (Colorimetric)
KA0587	Global Mono-Methyl Histone H3-K4 Quantification Kit (Fluorometric)
KA0616	Global Mono-Methyl Histone H3-K79 Quantification Kit (Colorimetric)
KA0617	Global Mono-Methyl Histone H3-K79 Quantification Kit (Fluorometric)
KA0592	Global Mono-Methyl Histone H3-K9 Quantification Kit (Colorimetric)
KA0593	Global Mono-Methyl Histone H3-K9 Quantification Kit (Fluorometric)
KA0606	Global Pan-Methyl Histone H3-K27 Quantification Kit (Colorimetric)
KA0607	Global Pan-Methyl Histone H3-K27 Quantification Kit (Fluorometric)
KA0614	Global Pan-Methyl Histone H3-K36 Quantification Kit (Colorimetric)
KA0615	Global Pan-Methyl Histone H3-K36 Quantification Kit (Fluorometric)
KA0590	Global Pan-Methyl Histone H3-K4 Quantification Kit (Colorimetric)
KA0591	Global Pan-Methyl Histone H3-K4 Quantification Kit (Fluorometric)
KA0622	Global Pan-Methyl Histone H3-K79 Quantification Kit (Colorimetric)
KA0623	Global Pan-Methyl Histone H3-K79 Quantification Kit (Fluorometric)
KA0598	Global Pan-Methyl Histone H3-K9 Quantification Kit (Colorimetric)
KA0599	Global Pan-Methyl Histone H3-K9 Quantification Kit (Fluorometric)
KA0604	Global Tri-Methyl Histone H3-K27 Quantification Kit (Colorimetric)
KA0605	Global Tri-Methyl Histone H3-K27 Quantification Kit (Fluorometric)

Epigenetic





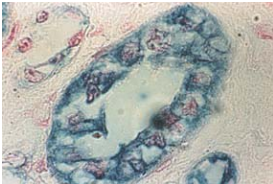
KA0911



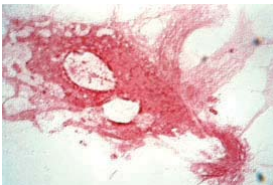
KA0567



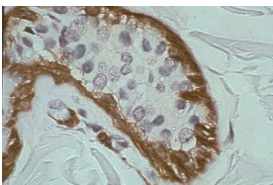
KA0563



KA0565



KA0566



KA0562

Epigenetic Assay Kits

Cat. Num.	Product Name
KA0612	Global Tri-Methyl Histone H3-K36 Quantification Kit (Colorimetric)
KA0613	Global Tri-Methyl Histone H3-K36 Quantification Kit (Fluorometric)
KA0588	Global Tri-Methyl Histone H3-K4 Quantification Kit (Colorimetric)
KA0589	Global Tri-Methyl Histone H3-K4 Quantification Kit (Fluorometric)
KA0620	Global Tri-Methyl Histone H3-K79 Quantification Kit (Colorimetric)
KA0621	Global Tri-Methyl Histone H3-K79 Quantification Kit (Fluorometric)
KA0596	Global Tri-Methyl Histone H3-K9 Quantification Kit (Colorimetric)
KA0597	Global Tri-Methyl Histone H3-K9 Quantification Kit (Fluorometric)
KA0626	HAT Activity/Inhibition Assay Kit (Colorimetric)
KA0628	HDAC Activity/Inhibition Assay Kit (Colorimetric)
KA0627	HDAC Activity/Inhibition Assay Kit (Fluorometric)
KA0629	HDAC1 Assay Kit
KA0688	HDAC2 Assay Kit
KA0631	HDAC8 Assay Kit
KA0573	Histone Demethylase (H3-K4 Specific) Activity/Inhibition Assay Kit
KA0576	Histone Demethylase (H3-K9 Specific) Activity/Inhibition Fast Assay Kit
KA0575	Histone Demethylase LSD1 Activity/Inhibition Assay Kit
KA0574	Histone Demethylase LSD1 Inhibitor Screening Assay Kit
KA0624	Histone H3 (Total) Quantification Kit (Colorimetric)
KA0625	Histone H3 (Total) Quantification Kit (Fluorometric)
KA0572	Histone Methyltransferase Activity/Inhibition Assay Kit (H3-K27)
KA0570	Histone Methyltransferase Activity/Inhibition Assay Kit (H3-K4)
KA0571	Histone Methyltransferase Activity/Inhibition Assay Kit (H3-K9)
KA0687	In Situ H3-K9 Acetylation Assay Kit
KA0707	In Situ Histone H3 Phosphorylation (Ser10) Assay Kit
KA0577	In Situ Histone H3-K27 Tri-Methylation Assay Kit
KA0689	In Situ Histone H3-K4 Methylation Assay Kit
KA0690	In Situ Histone H3-K9 Methylation Assay Kit
KA0675	MBD2 Binding Activity/Inhibition Assay Kit
KA0691	Methylated DNA Capture Kit
KA0676	Methylated DNA Quantification Kit

Fluorescent Protein Assay Kits

Cat. Num.	Product Name
KA0911	GFP Quantitation Kit

IHC Kits

Cat. Num.	Product Name	Cat. Num.	Product Name
KA0564	BLACK Peroxidase Substrate Kit	KA0565	RealBlue Peroxidase Substrate Kit
KA0567	BLUE Phosphatase Substrate Kit	KA0566	RED Phosphatase Substrate Kit
KA0563	ORANGE Peroxidase Substrate Kit	KA0562	ReliableDAB Peroxidase Substrate Kit

IP & ChIP Kits

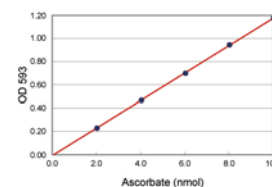
Cat. Num.	Product Name	Cat. Num.	Product Name
KA0568	Acetyl-Histone H3 ChIP Kit	KA0693	Protein G Agarose Immunoprecipitation Kit
KA0569	Acetyl-Histone H4 ChIP Kit	KA0694	Tissue Acetyl-Histone H3 ChIP Kit
KA0669	Chromatin Immunoprecipitation (ChIP) Kit	KA0695	Tissue Acetyl-Histone H4 ChIP Kit
KA0670	Methylated DNA Immunoprecipitation Kit	KA0696	Tissue Chromatin Immunoprecipitation (ChIP) Kit
KA0671	Methyl-CpG Binding domain Protein 2 ChIP Kit	KA0697	Tissue Methylated DNA Immunoprecipitation Kit
KA0672	Methyl-Histone H3-K27 ChIP Kit	KA0698	Tissue Methyl-CpG Binding domain Protein 2 ChIP Kit
KA0685	Methyl-Histone H3-K4 ChIP Kit	KA0699	Tissue Methyl-Histone H3-K27 ChIP Kit
KA0686	Methyl-Histone H3-K9 ChIP Kit	KA0700	Tissue Methyl-Histone H3-K4 ChIP Kit
KA0692	Protein A Agarose Immunoprecipitation Kit	KA0701	Tissue Methyl-Histone H3-K9 ChIP Kit

IP & ChIP Kits

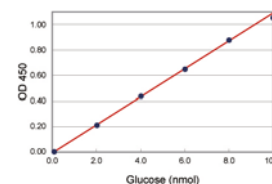
Cat. Num.	Product Name
KA0702	Tri-Methyl-Histone H3-K9 ChIP Kit

Metabolism Assay Kits

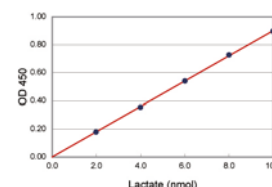
Cat. Num.	Product Name	Cat. Num.	Product Name
KA0803	Acetyl-CoA Assay Kit	KA0792	Glutathione Assay Kit
KA0816	Acid Phosphatase Assay Kit (Colorimetric)	KA0800	Glutathione Assay Kit
KA0819	Acid Phosphatase Assay Kit (Fluorometric)	KA0797	Glutathione Assay Kit (Colorimetric)
KA0876	Aconitase Assay Kit	KA0882	Glutathione Peroxidase Assay Kit
KA0902	Adipogenesis Assay Kit	KA0881	Glutathione Reductase Assay Kit
KA0837	Adipolysis Assay Kit	KA0861	Glycogen Assay Kit
KA0807	ADP Assay Kit (Colorimetric/Fluorometric)	KA0799	GST Activity Assay Kit (Colorimetric)
KA0795	ADP/ATP Ratio Assay Kit	KA0796	GST Activity Assay Kit (Fluorometric)
KA0817	Alkaline Phosphatase Assay Kit	KA0839	HDL and LDL/VLDL Cholesterol Quantification Kit
KA0820	Alkaline Phosphatase Assay Kit (Fluorometric)	KA0871	Hemin Assay Kit
KA0872	alpha-Ketoglutarate Assay Kit	KA0801	Hydrogen Peroxide Assay Kit
KA0810	Ammonia Assay Kit	KA0814	Iron Assay Kit
KA0875	Amylase Assay Kit	KA0865	Isocitrate Assay Kit
KA0868	Ascorbic Acid Assay Kit	KA0833	Lactate Assay Kit
KA0806	ATP Assay Kit (Colorimetric/Fluorometric)	KA0834	Lactate Assay Kit II
KA0794	ATP Cell Viability Assay Kit	KA0878	Lactate Dehydrogenase Assay Kit
KA0854	beta-Hydroxybutyrate Assay Kit	KA0848	Lactose Assay Kit
KA0824	Branched Chain Amino Acid (Leu, Ile, Val) Assay Kit	KA0863	L-Alanine Assay Kit
KA0812	Calcium Assay Kit (Colorimetric)	KA0859	L-Amino Acid Quantitation Kit
KA0884	Catalase Assay Kit	KA0860	L-Carnitine Assay Kit
KA0790	CETP Activity Assay Kit	KA0877	Lipase Assay Kit
KA0828	CETP Inhibitor Drug Screening Kit	KA0813	Magnesium Assay Kit
KA0823	Chloride Assay Kit	KA0858	Malate Assay Kit
KA0829	Cholesterol/Cholesteryl Ester Quantitation Kit	KA0843	Maltose and Glucose Assay Kit
KA0840	Choline/Acetylcholine Quantification Kit	KA0851	Maltose Assay Kit
KA0864	Citrate Assay Kit	KA0804	NAD+/NADH Quantitation Kit
KA0821	Cobalt Assay Kit	KA0805	NADP+/NADPH Quantitation Kit
KA0809	Coenzyme A Assay Kit	KA0822	Nickel Assay Kit
KA0856	Creatine Assay Kit	KA0798	Nitric Oxide Assay Kit (Colorimetric)
KA0849	Creatinine Assay Kit	KA0793	Nitric Oxide Assay Kit (Fluorometric)
KA0869	D-Lactate Assay Kit (Colorimetric)	KA0867	Oxaloacetate Assay Kit
KA0845	Ethanol Assay Kit	KA0826	Phenylalanine Assay Kit (Fluorometric)
KA0808	FAD Assay Kit	KA0815	Phosphate Assay Kit (Colorimetric)
KA0870	Ferric Reducing Ascorbate Assay Kit	KA0827	Phosphatidylcholine Assay Kit
KA0818	Fluorescent Phosphate Assay Kit	KA0791	PLTP Activity Assay Kit
KA0838	Free Fatty Acid Quantification Kit	KA0830	PLTP Inhibitor Drug Screening Kit
KA0853	Free Glycerol Assay Kit	KA0836	Pyruvate Assay Kit
KA0844	Fructose Assay Kit	KA0873	Pyruvate Kinase Assay Kit
KA0855	Fumarate Assay Kit	KA0857	Sarcosine Assay Kit
KA0842	Galactose and Lactose Assay Kit	KA0825	Sialic Acid Assay Kit
KA0846	Galactose Assay Kit	KA0862	Starch Assay Kit
KA0841	Glucose and Sucrose Assay Kit	KA0850	Sucrose Assay Kit
KA0831	Glucose Assay Kit	KA0883	Thioredoxin Reductase Assay Kit
KA0832	Glucose Assay Kit II	KA0802	Total Antioxidant Capacity Assay Kit
KA0866	Glucose-6-Phosphate Assay Kit	KA0847	Triglyceride Quantification Kit
KA0880	Glucose-6-Phosphate Dehydrogenase Assay Kit	KA0811	Urea Assay Kit
KA0852	Glutamate Assay Kit	KA0835	Uric Acid Assay Kit
KA0879	Glutamate Dehydrogenase Assay Kit	KA0874	Xanthine Oxidase Assay Kit



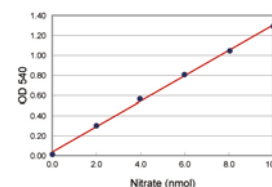
KA0870



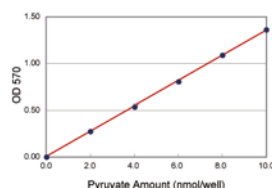
KA0832



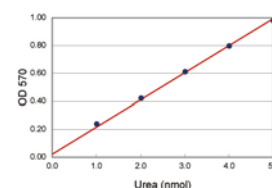
KA0834



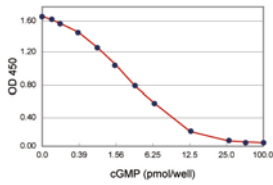
KA0798



KA0836



KA0811



KA0887

Signal Transduction Assay Kits

Cat. Num.	Product Name	Cat. Num.	Product Name
KA0885	Akt Activity Assay Kit	KA0888	JNK Activity Screening Kit
KA0900	beta-Secretase Activity Assay Kit	KA0903	PDE5A Assay Kit
KA0886	cAMP Direct Immunoassay Kit	KA0904	PI3 Kinase Assay Kit
KA0887	cGMP Direct Immunoassay Kit	KA0905	PTPN1 Assay Kit
KA0889	JNK Activity Assay Kit	KA0906	SPHK1 Assay Kit

