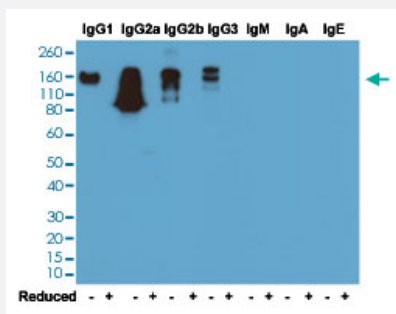


RecomAb™

Mouse IgG monoclonal antibody, clone RM104

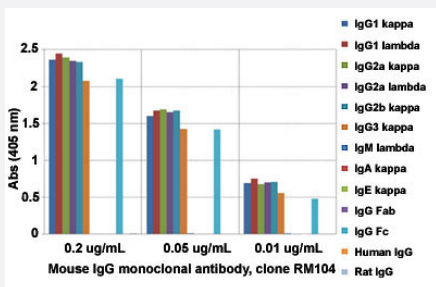
Catalog # MAB12765 Size 100 ug

Applications



Western Blot

Western blot analysis of nonreduced (-) and reduced (+) mouse immunoglobulins (20 ng/lane) with Mouse IgG monoclonal antibody, clone RM104 (Cat # MAB12765) under 0.2 ug/mL working concentration. This antibody reacts to nonreduced mouse IgG1, IgG2a, IgG2b, and IgG3. It showed no cross reactivity with IgM, IgA, or IgE.



Enzyme-linked Immunoabsorbent Assay

ELISA analysis of Mouse IgG monoclonal antibody, clone RM104 (Cat # MAB12765) at the following concentrations: 0.2 ug/mL, 0.05 ug/mL, and 0.01 ug/mL. The plate was coated with 50 ng/well of different immunoglobulins and the result shows this antibody reacts to the Fc region of mouse IgG1, IgG2a, IgG2b, and IgG3; no cross reactivity with IgM, IgA, IgE, human or rat IgG. An alkaline phosphatase conjugated anti-rabbit IgG as the secondary antibody.

Enzyme-linked Immunoabsorbent Assay

A titer ELISA of mouse IgG. The plate was coated with different amounts of mouse IgG. A serial dilution of Mouse IgG monoclonal antibody, clone RM104 (Cat# MAB12765) was used as the primary antibody. An alkaline phosphatase conjugated anti-rabbit IgG as the secondary antibody.

Specification

Product Description

Rabbit recombinant monoclonal antibody raised against mouse IgG.

Antibody Species	Rabbit
Immunogen	Original antibody is raised against mouse IgG.
Sequence	N/A
Reactivity	Mouse
Specificity	This antibody reacts to the Fc region of all subclasses of mouse IgG. No cross reactivity with mouse IgM, IgA, IgE, human IgG, and rat IgG. It may cross react to goat IgG.
Form	Liquid
Purification	Protein A affinity purification
Isotype	IgG
Recommend Usage	ELISA (0.005 - 0.2 ug/mL) Flow Cytometry Immunocytochemistry (0.5 - 2 ug/mL) Immunohistochemistry (0.5 - 2 ug/mL) Immunoprecipitation Western Blot (0.1 - 0.5 ug/mL) The optimal working dilution should be determined by the end user.
Storage Buffer	In PBS (50% glycerol, 1% BSA, 0.09% sodium azide)
Storage Instruction	Store at -20°C. Aliquot to avoid repeated freezing and thawing.
Note	This product contains sodium azide: a POISONOUS AND HAZARDOUS SUBSTANCE which should be handled by trained staff only.

Applications

- Western Blot

Western blot analysis of nonreduced (-) and reduced (+) mouse immunoglobulins (20 ng/lane) with Mouse IgG monoclonal antibody, clone RM104 (Cat # MAB12765) under 0.2 ug/mL working concentration. This antibody reacts to nonreduced mouse IgG1, IgG2a, IgG2b, and IgG3. It showed no cross reactivity with IgM, IgA, or IgE.

- Immunohistochemistry

- Immunocytochemistry

- Immunoprecipitation

- Enzyme-linked Immunoabsorbent Assay

ELISA analysis of Mouse IgG monoclonal antibody, clone RM104 (Cat # MAB12765) at the following concentrations: 0.2 ug/mL, 0.05 ug/mL, and 0.01 ug/mL. The plate was coated with 50 ng/well of different immunoglobulins and the result shows this antibody reacts to the Fc region of mouse IgG1, IgG2a, IgG2b, and IgG3; no cross reactivity with IgM, IgA, IgE, human or rat IgG. An alkaline phosphatase conjugated anti-rabbit IgG as the secondary antibody.

- Enzyme-linked Immunoabsorbent Assay

A titer ELISA of mouse IgG. The plate was coated with different amounts of mouse IgG. A serial dilution of Mouse IgG monoclonal antibody, clone RM104 (Cat# MAB12765) was used as the primary antibody. An alkaline phosphatase conjugated anti-rabbit IgG as the secondary antibody.

- Flow Cytometry

Gene Info — Ighg1

Entrez GeneID	16017
---------------	-----------------------

Protein Accession#	P01868
--------------------	------------------------

Gene Name	Ighg1
-----------	-------

Gene Alias	IgG1, Igh-4, VH7183
------------	---------------------

Gene Description	immunoglobulin heavy constant gamma 1 (G1m marker)
------------------	--

Gene Ontology	Hyperlink
---------------	---------------------------

Other Designations	-
--------------------	---