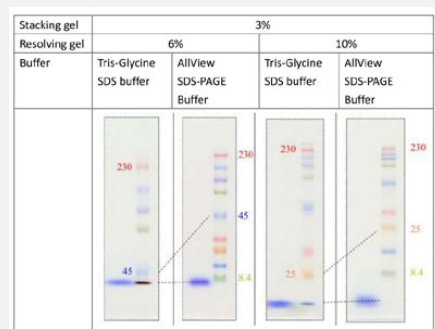


# AllView SDS-PAGE Buffer

Catalog # TM0011

Size 500 mL

## Applications



## Specification

### Product Description

AllView SDS-PAGE Buffer has a remarkable feature that enable us to separate proteins with wide range of molecular weights in the basic Laemmli gel (Tris-HCl) similar to using gradient gel. After electrophoresis, the polyacrylamide gel can be used directly for CBB staining, silver staining or western blotting.

### Form

Liquid

### Quality Control Testing

AllView SDS-PAGE Buffer enable us to separate proteins widely during SDS-PAGE like gradient gel.

### Recommend Usage

Electrophoresis (dilute with ultrapure water to 1x solution before use).

### Supplied Product

AllView SDS-PAGE Buffer is suitable for Laemmli gels  
 If precast gels are used, the optimal acrylamide concentration may be different.  
 AllView SDS-PAGE Buffer is not reusable.  
 AllView SDS-PAGE Buffer is 20x stock solution. Please dilute to 1x solution before use.  
 If precipitation of SDS is observed, completely dissolve it in a water bath (about 37°C) before use.  
 Optimal electrophoretic time is depending on acrylamide concentration, gel size and voltage. Accordingly, it is recommended to monitor electrophoresis using a prestained Protein MultiColor Marker (Cat # TM0009).

### Storage Instruction

Store in the dark at room temperature. Avoid prolonged exposure to light.

**Note**

The recommended acrylamide concentration is 6% for resolving gel and 3% for stacking gel to separate the entire range of about 10 kDa to 250 kDa. Especially if the separation of low molecular weight proteins (10 kDa~30 kDa) is required, 10% resolving gel is recommended.

---

## Applications

- Electrophoresis