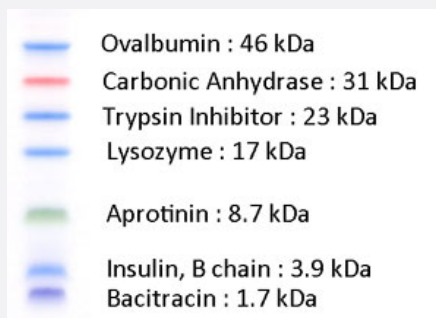


Protein MultiColor Marker, low M.W. range

Catalog # TM0010 Size 200 uL

Applications



Specification

Product Description	The Protein MultiColor Marker, low M.W. range consists of seven prestained protein standards, Blue, Red, Green and Purple, ranging in appropriate molecular weight from 2 kDa to 46 kDa. The marker is suitable for monitoring gel electrophoresis and electrophoretic transfer onto membranes. The protein concentrations are optimized to give uniform band intensities.
Form	Liquid
Quality Control Testing	Electrophoresis profile of Protein MultiColor Marker, low M.W. range (5 uL) on 16% polyacrylamide (3% C) gel / Tris-Tricine-SDS as running buffer.
Recommend Usage	Electrophoresis (5 uL/lane).
Storage Buffer	In 50 mM Tris-HCl, EDTA, glycerol, SDS, urea, pH 6.8.
Storage Instruction	Store at 4°C. Do not freeze.
Note	Protein MultiColor Marker, low M.W. range is supplied in gel loading buffer for direct loading onto SDS-PAGE without heating or adding reducing agents.

Applications

- Electrophoresis