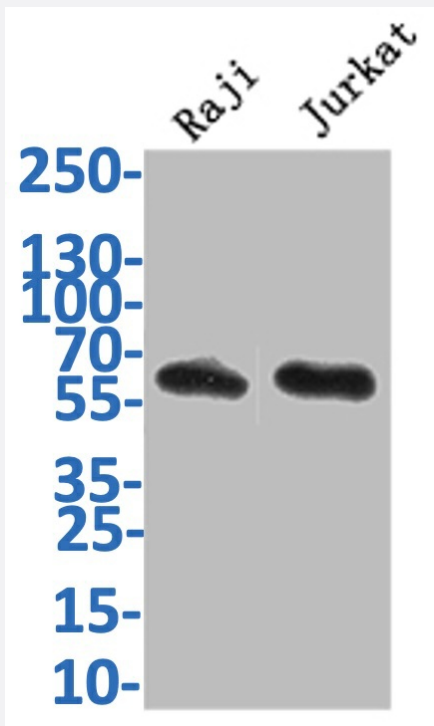


RecomAb™

## CD19 recombinant monoclonal antibody, clone 27G9

Catalog # RAB07800      Size 100 uL

### Applications



#### Western Blot

Western Blot analysis of Lane 1: Raji whole cell lysate; Lane 2: Jurkat whole cell lysate.

### Specification

Product Description	Rabbit recombinant monoclonal antibody raised against human and mouse CD19.
Antibody Species	Rabbit
Immunogen	Original antibody is raised against a synthetic peptide corresponding to human CD19.
Theoretical MW (kDa)	Calculated MW: 62
Reactivity	Human, Mouse
Form	Liquid

Purification	Affinity chromatography purification
Isotype	IgG
Recommend Usage	ELISA Western Blot(1:500-1:2000) The optimal working dilution should be determined by the end user.
Storage Buffer	In PBS, pH7.4 (150 mM NaCl, 0.02% sodium azide and 50% glycerol)
Storage Instruction	Store at -20°C or -80°C. Aliquot to avoid repeated freezing and thawing.
Note	This product contains sodium azide: a POISONOUS AND HAZARDOUS SUBSTANCE which should be handled by trained staff only.

## Applications

- Western Blot

Western Blot analysis of Lane 1: Raji whole cell lysate; Lane 2: Jurkat whole cell lysate.

- Enzyme-linked Immunoabsorbent Assay

## Gene Info — CD19

Entrez GeneID	<a href="#">930</a>
Protein Accession#	<a href="#">P15391</a>
Gene Name	CD19
Gene Alias	B4, MGC12802
Gene Description	CD19 molecule
Omim ID	<a href="#">107265</a>
Gene Ontology	<a href="#">Hyperlink</a>
Gene Summary	Lymphocytes proliferate and differentiate in response to various concentrations of different antigens. The ability of the B cell to respond in a specific, yet sensitive manner to the various antigens is achieved with the use of low-affinity antigen receptors. This gene encodes a cell surface molecule which assembles with the antigen receptor of B lymphocytes in order to decrease the threshold for antigen receptor-dependent stimulation. [provided by RefSeq]

**Other Designations**

B-lymphocyte antigen CD19|CD19 antigen

**Pathway**

- [B cell receptor signaling pathway](#)
- [Hematopoietic cell lineage](#)
- [Primary immunodeficiency](#)

**Disease**

- [Arthritis](#)
- [Crohn Disease](#)
- [Genetic Predisposition to Disease](#)
- [Lupus Erythematosus](#)
- [Pemphigus](#)
- [Scleroderma](#)