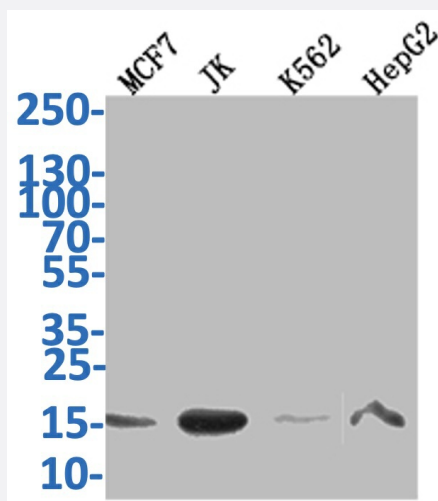


RecomAb™

# HIST1H3A recombinant monoclonal antibody, clone 28H10

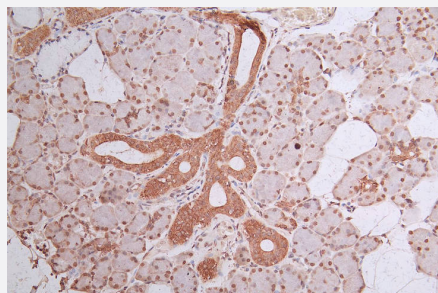
Catalog # RAB07797      Size 100 uL

## Applications



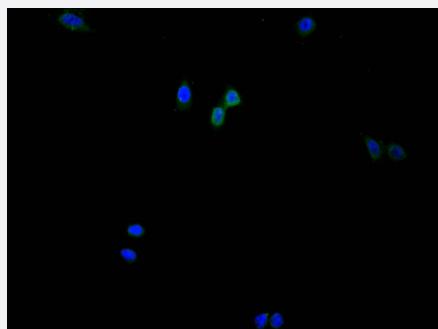
### Western Blot

Western Blot analysis of Lane 1: MCF-7 whole cell lysate; Lane 2: JK whole cell lysate; Lane 3: K562 whole cell lysate; Lane 4: HepG2 whole cell lysate.



### Immunohistochemistry

Immunohistochemistry image of HIST1H3A recombinant monoclonal antibody, clone 28H10 diluted at 1:300 and staining in paraffin-embedded human salivary gland tissue performed on a Leica Bond™ system.



### Immunofluorescence

Immunofluorescence staining of HepG2 Cells with HIST1H3A recombinant monoclonal antibody, clone 28H10 at 1:200, counter-stained with DAPI.

## Specification

<b>Product Description</b>	Rabbit recombinant monoclonal antibody raised against human and mouse HIST1H3A.
<b>Antibody Species</b>	Rabbit
<b>Immunogen</b>	Original antibody is raised against a synthetic peptide corresponding to human HIST1H3A.
<b>Theoretical MW (kDa)</b>	Calculated MW: 16
<b>Reactivity</b>	Human, Mouse
<b>Form</b>	Liquid
<b>Purification</b>	Affinity chromatography purification
<b>Isotype</b>	IgG
<b>Recommend Usage</b>	ELISA Immunohistochemistry(1:50-1:200) Immunofluorescence(1:20-1:200) Western Blot(1:500-1:2000) The optimal working dilution should be determined by the end user.
<b>Storage Buffer</b>	In PBS, pH7.4 (150 mM NaCl, 0.02% sodium azide and 50% glycerol)
<b>Storage Instruction</b>	Store at -20°C or -80°C. Aliquot to avoid repeated freezing and thawing.
<b>Note</b>	This product contains sodium azide: a POISONOUS AND HAZARDOUS SUBSTANCE which should be handled by trained staff only.

## Applications

### ● Western Blot

Western Blot analysis of Lane 1: MCF-7 whole cell lysate; Lane 2: JK whole cell lysate; Lane 3: K562 whole cell lysate; Lane 4: HepG2 whole cell lysate.

### ● Immunohistochemistry

Immunohistochemistry image of HIST1H3A recombinant monoclonal antibody, clone 28H10 diluted at 1:300 and staining in paraffin-embedded human salivary gland tissue performed on a Leica Bond<sup>TM</sup> system.

### ● Immunofluorescence

Immunofluorescence staining of HepG2 Cells with HIST1H3A recombinant monoclonal antibody, clone 28H10 at 1:200, counter-stained with DAPI.

- Enzyme-linked Immunoabsorbent Assay

## Gene Info — HIST1H3A

**Entrez GeneID** [8350](#)

**Protein Accession#** [P68431](#)

**Gene Name** HIST1H3A

**Gene Alias** H3/A, H3FA

**Gene Description** histone cluster 1, H3a

**Omim ID** [602810](#)

**Gene Ontology** [Hyperlink](#)

**Gene Summary** Histones are basic nuclear proteins that are responsible for the nucleosome structure of the chromosomal fiber in eukaryotes. This structure consists of approximately 146 bp of DNA wrapped around a nucleosome, an octamer composed of pairs of each of the four core histones (H2A, H2B, H3, and H4). The chromatin fiber is further compacted through the interaction of a linker histone, H1, with the DNA between the nucleosomes to form higher order chromatin structures. This gene is intronless and encodes a member of the histone H3 family. Transcripts from this gene lack polyA tails; instead, they contain a palindromic termination element. This gene is found in the large histone gene cluster on chromosome 6p22-p21.3. [provided by RefSeq]

**Other Designations** H3 histone family, member A|histone 1, H3a

## Pathway

- [Systemic lupus erythematosus](#)