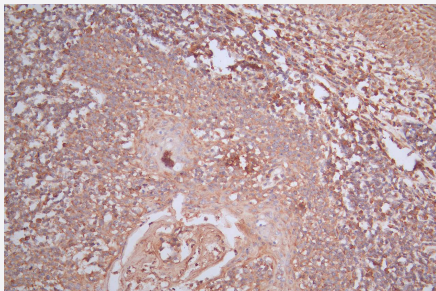


RecomAb™

MS4A1 recombinant monoclonal antibody, clone 23H3

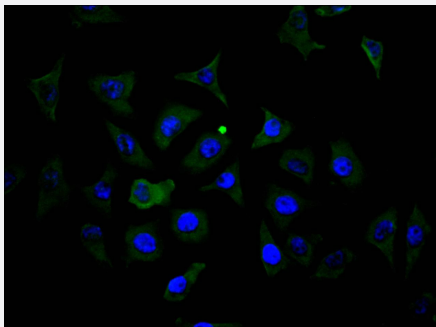
Catalog # RAB07795 Size 100 uL

Applications



Immunohistochemistry

Immunohistochemistry image of MS4A1 recombinant monoclonal antibody, clone 23H3 diluted at 1:200 and staining in paraffin-embedded human tonsil tissue performed on a Leica Bond™ system.



Immunofluorescence

Immunofluorescence staining of MCF-7 Cells with MS4A1 recombinant monoclonal antibody, clone 23H3 at 1:150, counter-stained with DAPI.

Specification

Product Description	Rabbit recombinant monoclonal antibody raised against human MS4A1.
Antibody Species	Rabbit
Immunogen	Original antibody is raised against a synthetic peptide corresponding to human MS4A1.
Reactivity	Human
Form	Liquid
Purification	Affinity chromatography purification

Isotype	IgG
Recommend Usage	ELISA Immunohistochemistry(1:50-1:200) Immunofluorescence(1:20-1:200) The optimal working dilution should be determined by the end user.
Storage Buffer	In PBS, pH7.4 (150 mM NaCl, 0.02% sodium azide and 50% glycerol)
Storage Instruction	Store at -20°C or -80°C. Aliquot to avoid repeated freezing and thawing.
Note	This product contains sodium azide: a POISONOUS AND HAZARDOUS SUBSTANCE which should be handled by trained staff only.

Applications

- Immunohistochemistry

Immunohistochemistry image of MS4A1 recombinant monoclonal antibody, clone 23H3 diluted at 1:200 and staining in paraffin-embedded human tonsil tissue performed on a Leica Bond™ system.

- Immunofluorescence

Immunofluorescence staining of MCF-7 Cells with MS4A1 recombinant monoclonal antibody, clone 23H3 at 1:150, counter-stained with DAPI.

- Enzyme-linked Immunoabsorbent Assay

Gene Info — MS4A1

Entrez GeneID	931
Protein Accession#	P11836
Gene Name	MS4A1
Gene Alias	B1, Bp35, CD20, LEU-16, MGC3969, MS4A2, S7
Gene Description	membrane-spanning 4-domains, subfamily A, member 1
Omim ID	112210
Gene Ontology	Hyperlink

Gene Summary

This gene encodes a member of the membrane-spanning 4A gene family. Members of this nascent protein family are characterized by common structural features and similar intron/exon splice boundaries and display unique expression patterns among hematopoietic cells and nonlymphoid tissues. This gene encodes a B-lymphocyte surface molecule which plays a role in the development and differentiation of B-cells into plasma cells. This family member is localized to 11q12, among a cluster of family members. Alternative splicing of this gene results in two transcript variants which encode the same protein. [provided by RefSeq]

Other Designations

B-lymphocyte cell-surface antigen B1|CD20 antigen|CD20 receptor

Pathway

- [Hematopoietic cell lineage](#)

Disease

- [Breast cancer](#)
- [Breast Neoplasms](#)
- [Genetic Predisposition to Disease](#)
- [Lymphoma](#)
- [Neoplasm Recurrence](#)
- [Ovarian cancer](#)