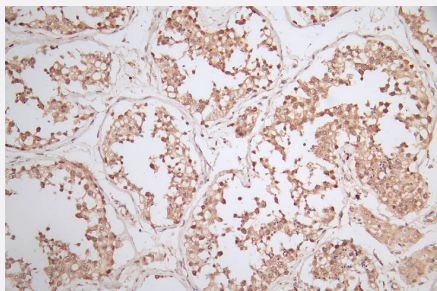


RecomAb™

WDR5 recombinant monoclonal antibody, clone 18D11

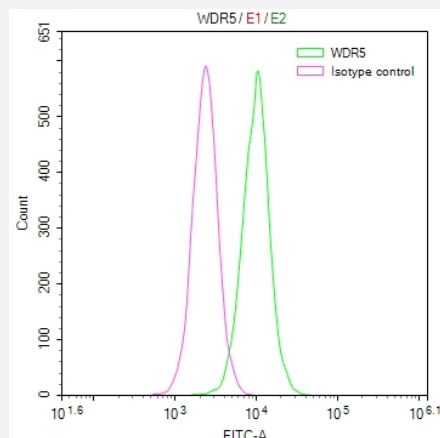
Catalog # RAB07789 Size 100 uL

Applications



Immunohistochemistry

Immunohistochemistry image of WDR5 recombinant monoclonal antibody, clone 18D11 diluted at 1:50 and staining in paraffin-embedded human testis tissue performed on a Leica Bond™ system.



Flow Cytometry

Overlay Peak curve showing Hela cells stained with WDR5 recombinant monoclonal antibody, clone 18D11 (red line) at 1:50.

Specification

Product Description	Rabbit recombinant monoclonal antibody raised against human WDR5.
Antibody Species	Rabbit
Immunogen	Original antibody is raised against a synthetic peptide corresponding to human WDR5.
Reactivity	Human
Form	Liquid

Purification	Affinity chromatography purification
Isotype	IgG
Recommend Usage	ELISA Flow Cytometry(1:50-1:200) Immunohistochemistry(1:50-1:200) The optimal working dilution should be determined by the end user.
Storage Buffer	In PBS, pH7.4 (150 mM NaCl, 0.02% sodium azide and 50% glycerol)
Storage Instruction	Store at -20°C or -80°C. Aliquot to avoid repeated freezing and thawing.
Note	This product contains sodium azide: a POISONOUS AND HAZARDOUS SUBSTANCE which should be handled by trained staff only.

Applications

- Immunohistochemistry

Immunohistochemistry image of WDR5 recombinant monoclonal antibody, clone 18D11 diluted at 1:50 and staining in paraffin-embedded human testis tissue performed on a Leica Bond™ system.

- Enzyme-linked Immunoabsorbent Assay

- Flow Cytometry

Overlay Peak curve showing Hela cells stained with WDR5 recombinant monoclonal antibody, clone 18D11 (red line) at 1:50.

Gene Info — WDR5

Entrez GeneID	11091
Protein Accession#	P61964
Gene Name	WDR5
Gene Alias	BIG-3, SWD3
Gene Description	WD repeat domain 5
Omim ID	609012
Gene Ontology	Hyperlink

Gene Summary

This gene encodes a member of the WD repeat protein family. WD repeats are minimally conserved regions of approximately 40 amino acids typically bracketed by gly-his and trp-aspartate (GH-WD), which may facilitate formation of heterotrimeric or multiprotein complexes. Members of this family are involved in a variety of cellular processes, including cell cycle progression, signal transduction, apoptosis, and gene regulation. This protein contains 7 WD repeats. Alternatively spliced transcript variants encoding the same protein have been identified. [provided by RefSeq]

Other Designations

BMP2-induced 3-kb gene protein|SWD3, Set1c WD40 repeat protein, homolog|WD-repeat protein 5