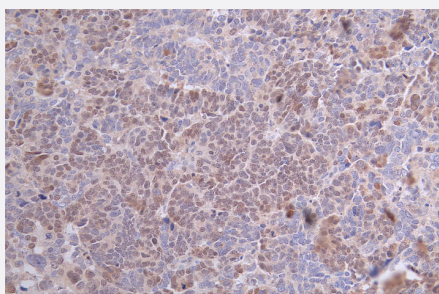


RecomAb™

PAX8 recombinant monoclonal antibody, clone 17F10

Catalog # RAB07755 Size 100 uL

Applications



Immunohistochemistry

Immunohistochemistry image of PAX8 recombinant monoclonal antibody, clone 17F10 diluted at 1:100 and staining in paraffin-embedded human ovarian cancer performed on a Leica Bond™ system.

Specification

Product Description	Rabbit recombinant monoclonal antibody raised against human PAX8.
Antibody Species	Rabbit
Immunogen	Original antibody is raised against a synthetic peptide corresponding to human PAX8.
Reactivity	Human
Form	Liquid
Purification	Affinity chromatography purification
Isotype	IgG
Recommend Usage	ELISA Immunohistochemistry(1:50-1:200) The optimal working dilution should be determined by the end user.
Storage Buffer	In PBS, pH7.4 (150 mM NaCl, 0.02% sodium azide and 50% glycerol)
Storage Instruction	Store at -20°C or -80°C. Aliquot to avoid repeated freezing and thawing.

Note

This product contains sodium azide: a POISONOUS AND HAZARDOUS SUBSTANCE which should be handled by trained staff only.

Applications

- Immunohistochemistry

Immunohistochemistry image of PAX8 recombinant monoclonal antibody, clone 17F10 diluted at 1:100 and staining in paraffin-embedded human ovarian cancer performed on a Leica BondTM system.

- Enzyme-linked Immunoabsorbent Assay

Gene Info — PAX8

Entrez GeneID	7849
---------------	----------------------

Protein Accession#	Q06710
--------------------	------------------------

Gene Name	PAX8
-----------	------

Gene Alias	-
------------	---

Gene Description	paired box 8
------------------	--------------

Omim ID	167415 218700
---------	-------------------------------

Gene Ontology	Hyperlink
---------------	---------------------------

Gene Summary	This gene encodes a member of the paired box (PAX) family of transcription factors. Members of this gene family typically encode proteins that contain a paired box domain, an octapeptide, and a paired-type homeodomain. This nuclear protein is involved in thyroid follicular cell development and expression of thyroid-specific genes. Mutations in this gene have been associated with thyroid dysgenesis, thyroid follicular carcinomas and atypical follicular thyroid adenomas. Alternatively spliced transcript variants encoding different isoforms have been described. [provided by RefSeq]
--------------	---

Other Designations	OTTHUMP00000158659 OTTHUMP00000158660 paired domain gene 8
--------------------	--

Pathway

- [Pathways in cancer](#)

- [Thyroid cancer](#)

Disease

- [Cleft Lip](#)
- [Cleft Palate](#)
- [Congenital Hypothyroidism](#)
- [Genetic Predisposition to Disease](#)
- [Thyroid Neoplasms](#)
- [Tobacco Use Disorder](#)