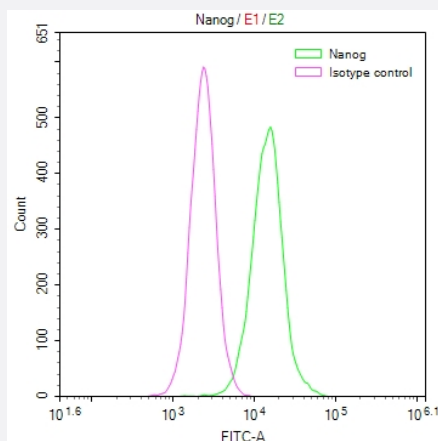


RecomAb™

# NANOG recombinant monoclonal antibody, clone 2G6

Catalog # RAB07753      Size 100 uL

## Applications



### Flow Cytometry

Overlay Peak curve showing Hela cells stained with NANOG recombinant monoclonal antibody, clone 2G6 (red line) at 1:50.

## Specification

<b>Product Description</b>	Rabbit recombinant monoclonal antibody raised against human NANOG.
<b>Antibody Species</b>	Rabbit
<b>Immunogen</b>	Original antibody is raised against a synthetic peptide corresponding to human NANOG.
<b>Reactivity</b>	Human
<b>Form</b>	Liquid
<b>Purification</b>	Affinity chromatography purification
<b>Isotype</b>	IgG
<b>Recommend Usage</b>	ELISA Flow Cytometry(1:50-1:200) The optimal working dilution should be determined by the end user.
<b>Storage Buffer</b>	In PBS, pH7.4 (150 mM NaCl, 0.02% sodium azide and 50% glycerol)

**Storage Instruction**

Store at -20°C or -80°C.  
Aliquot to avoid repeated freezing and thawing.

**Note**

This product contains sodium azide: a POISONOUS AND HAZARDOUS SUBSTANCE which should be handled by trained staff only.

## Applications

- Enzyme-linked Immunoabsorbent Assay
- Flow Cytometry

Overlay Peak curve showing Hela cells stained with NANOG recombinant monoclonal antibody, clone 2G6 (red line) at 1:50.

## Gene Info — NANOG

**Entrez GeneID** [79923](#)

**Protein Accession#** [Q9H9S0](#)

**Gene Name** NANOG

**Gene Alias** -

**Gene Description** Nanog homeobox

**Omim ID** [607937](#)

**Gene Ontology** [Hyperlink](#)

**Other Designations** homeobox transcription factor Nanog|homeobox transcription factor Nanog-delta 48