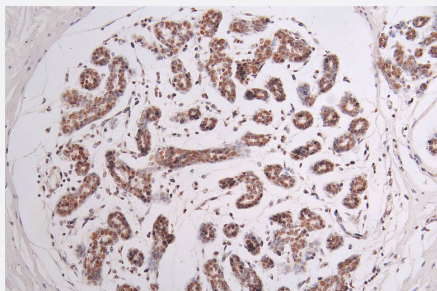


RecomAb™

# SMARCA4 recombinant monoclonal antibody, clone 22F3

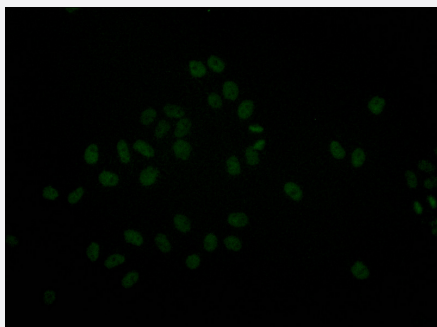
Catalog # RAB07734      Size 100 uL

## Applications



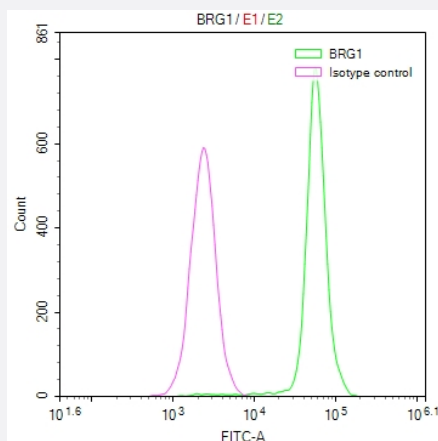
### Immunohistochemistry

Immunohistochemistry image of SMARCA4 recombinant monoclonal antibody, clone 22F3 diluted at 1:50 and staining in paraffin-embedded human breast cancer performed on a Leica Bond™ system.



### Immunofluorescence

Immunofluorescence staining of HeLa Cells with SMARCA4 recombinant monoclonal antibody, clone 22F3 at 1:20, counter-stained with DAPI.



### Flow Cytometry

Overlay Peak curve showing HeLa cells stained with SMARCA4 recombinant monoclonal antibody, clone 22F3 (red line) at 1:50.

## Specification

<b>Product Description</b>	Rabbit recombinant monoclonal antibody raised against human SMARCA4.
<b>Antibody Species</b>	Rabbit
<b>Immunogen</b>	Original antibody is raised against a synthetic peptide corresponding to human SMARCA4.
<b>Reactivity</b>	Human
<b>Form</b>	Liquid
<b>Purification</b>	Affinity chromatography purification
<b>Isotype</b>	IgG
<b>Recommend Usage</b>	ELISA Flow Cytometry(1:50-1:200) Immunohistochemistry(1:50-1:200) Immunofluorescence(1:20-1:200) The optimal working dilution should be determined by the end user.
<b>Storage Buffer</b>	In PBS, pH7.4 (150 mM NaCl, 0.02% sodium azide and 50% glycerol)
<b>Storage Instruction</b>	Store at -20°C or -80°C. Aliquot to avoid repeated freezing and thawing.
<b>Note</b>	This product contains sodium azide: a POISONOUS AND HAZARDOUS SUBSTANCE which should be handled by trained staff only.

## Applications

- Immunohistochemistry

Immunohistochemistry image of SMARCA4 recombinant monoclonal antibody, clone 22F3 diluted at 1:50 and staining in paraffin-embedded human breast cancer performed on a Leica Bond™ system.

- Immunofluorescence

Immunofluorescence staining of Hela Cells with SMARCA4 recombinant monoclonal antibody, clone 22F3 at 1:20, counter-stained with DAPI.

- Enzyme-linked Immunoabsorbent Assay

- Flow Cytometry

Overlay Peak curve showing Hela cells stained with SMARCA4 recombinant monoclonal antibody, clone 22F3 (red line) at 1:50.

## Gene Info — SMARCA4

Entrez GeneID	<a href="#">6597</a>
Protein Accession#	<a href="#">P51532</a>
Gene Name	SMARCA4
Gene Alias	BAF190, BRG1, FLJ39786, SNF2, SNF2-BETA, SNF2L4, SNF2LB, SWI2, hSNF2b
Gene Description	SWI/SNF related, matrix associated, actin dependent regulator of chromatin, subfamily a, member 4
Omim ID	<a href="#">603254</a>
Gene Ontology	<a href="#">Hyperlink</a>
Gene Summary	The protein encoded by this gene is a member of the SWI/SNF family of proteins and is similar to the brahma protein of Drosophila. Members of this family have helicase and ATPase activities and are thought to regulate transcription of certain genes by altering the chromatin structure around those genes. The encoded protein is part of the large ATP-dependent chromatin remodeling complex SNF/SWI, which is required for transcriptional activation of genes normally repressed by chromatin. In addition, this protein can bind BRCA1, as well as regulate the expression of the tumorigenic protein CD44. Multiple transcript variants encoding different isoforms have been found for this gene. [provided by RefSeq]
Other Designations	ATP-dependent helicase SMARCA4 BRM/SWI2-related gene 1 SNF2-like 4 SWI/SNF-related matrix-associated actin-dependent regulator of chromatin a4 brahma protein-like 1 global transcription activator homologous sequence homeotic gene regulator mitotic growth

## Disease

- [Breast cancer](#)
- [Breast Neoplasms](#)
- [Cardiovascular Diseases](#)
- [Diabetes Mellitus](#)
- [Edema](#)