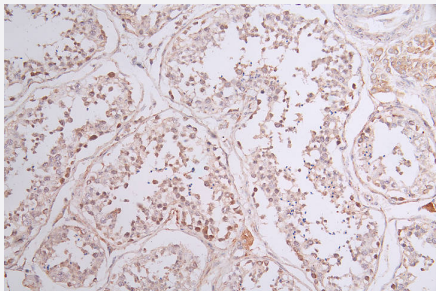


RecomAb™

SOCS7 recombinant monoclonal antibody, clone 23E4

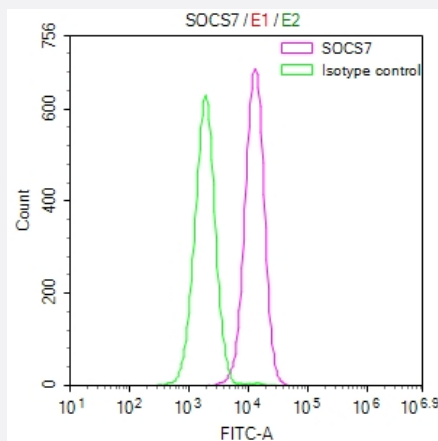
Catalog # RAB07732 Size 100 uL

Applications



Immunohistochemistry

Immunohistochemistry image of SOCS7 recombinant monoclonal antibody, clone 23E4 diluted at 1:50 and staining in paraffin-embedded human testis tissue performed on a Leica Bond™ system.



Flow Cytometry

Overlay Peak curve showing HepG2 cells stained with SOCS7 recombinant monoclonal antibody, clone 23E4 (red line) at 1:50.

Specification

Product Description	Rabbit recombinant monoclonal antibody raised against human SOCS7.
Antibody Species	Rabbit
Immunogen	Original antibody is raised against a synthetic peptide corresponding to human SOCS7.
Reactivity	Human
Form	Liquid

Purification	Affinity chromatography purification
Isotype	IgG
Recommend Usage	ELISA Flow Cytometry(1:50-1:200) Immunohistochemistry(1:50-1:200) The optimal working dilution should be determined by the end user.
Storage Buffer	In PBS, pH7.4 (150 mM NaCl, 0.02% sodium azide and 50% glycerol)
Storage Instruction	Store at -20°C or -80°C. Aliquot to avoid repeated freezing and thawing.
Note	This product contains sodium azide: a POISONOUS AND HAZARDOUS SUBSTANCE which should be handled by trained staff only.

Applications

- Immunohistochemistry

Immunohistochemistry image of SOCS7 recombinant monoclonal antibody, clone 23E4 diluted at 1:50 and staining in paraffin-embedded human testis tissue performed on a Leica Bond™ system.

- Enzyme-linked Immunoabsorbent Assay

- Flow Cytometry

Overlay Peak curve showing HepG2 cells stained with SOCS7 recombinant monoclonal antibody, clone 23E4 (red line) at 1:50.

Gene Info — SOCS7

Entrez GeneID	30837
Protein Accession#	O14512
Gene Name	SOCS7
Gene Alias	NAP4
Gene Description	suppressor of cytokine signaling 7
Omim ID	608788
Gene Ontology	Hyperlink
Gene Summary	Ash and phospholipase C binding protein

Other Designations

Nck, Ash and phospholipase C binding protein

Pathway

- [Jak-STAT signaling pathway](#)