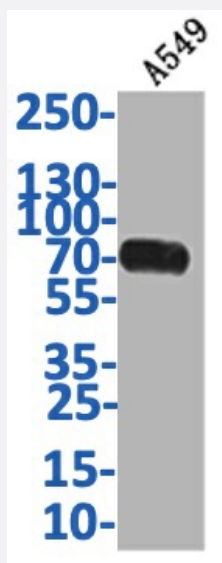


RecomAb™

PVR recombinant monoclonal antibody, clone 19C12

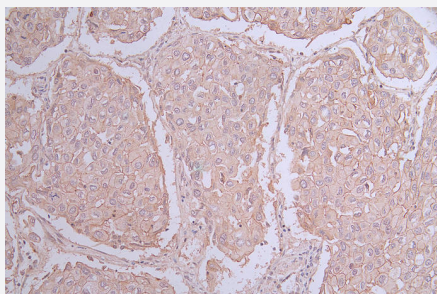
Catalog # RAB07731 Size 100 uL

Applications



Western Blot

Western Blot analysis of Lane 1: A549 whole cell lysate.



Immunohistochemistry

Immunohistochemistry image of PVR recombinant monoclonal antibody, clone 19C12 diluted at 1:50 and staining in paraffin-embedded human lung cancer performed on a Leica Bond™ system.

Specification

Product Description	Rabbit recombinant monoclonal antibody raised against human PVR.
Antibody Species	Rabbit
Immunogen	Original antibody is raised against a synthetic peptide corresponding to human PVR.

Theoretical MW (kDa)	Calculated MW: 70
Reactivity	Human
Form	Liquid
Purification	Affinity chromatography purification
Isotype	IgG
Recommend Usage	ELISA Immunohistochemistry(1:50-1:200) Western Blot(1:500-1:2000) The optimal working dilution should be determined by the end user.
Storage Buffer	In PBS, pH7.4 (150 mM NaCl, 0.02% sodium azide and 50% glycerol)
Storage Instruction	Store at -20°C or -80°C. Aliquot to avoid repeated freezing and thawing.
Note	This product contains sodium azide: a POISONOUS AND HAZARDOUS SUBSTANCE which should be handled by trained staff only.

Applications

- Western Blot

Western Blot analysis of Lane 1: A549 whole cell lysate.

- Immunohistochemistry

Immunohistochemistry image of PVR recombinant monoclonal antibody, clone 19C12 diluted at 1:50 and staining in paraffin-embedded human lung cancer performed on a Leica Bond™ system.

- Enzyme-linked Immunoabsorbent Assay

Gene Info — PVR

Entrez GeneID	5817
Protein Accession#	P15151
Gene Name	PVR
Gene Alias	CD155, FLJ25946, HVED, NECL5, Necl-5, PVS, TAGE4
Gene Description	poliovirus receptor

Omim ID [173850](#)

Gene Ontology [Hyperlink](#)

Gene Summary The protein encoded by this gene is a transmembrane glycoprotein belonging to the immunoglobulin superfamily. The external domain mediates cell attachment to the extracellular matrix molecule vitronectin, while its intracellular domain interacts with the dynein light chain Tctex-1/DYNLT1. The gene is specific to the primate lineage, and serves as a cellular receptor for poliovirus in the first step of poliovirus replication. Multiple transcript variants encoding different isoforms have been found for this gene. [provided by RefSeq]

Other Designations nectin-like 5

Pathway

- [Cell adhesion molecules \(CAMs\)](#)

Disease

- [Amyotrophic lateral sclerosis](#)
- [Cleft Lip](#)
- [Cleft Palate](#)
- [Motor Neuron Disease](#)
- [Muscular Atrophy](#)
- [Spinal muscular atrophy](#)