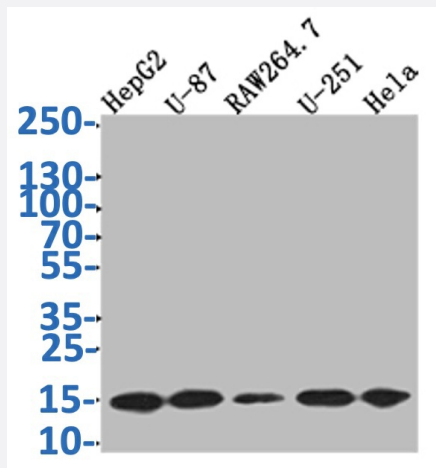


RecomAb™

MAP1LC3B recombinant monoclonal antibody, clone 7D11

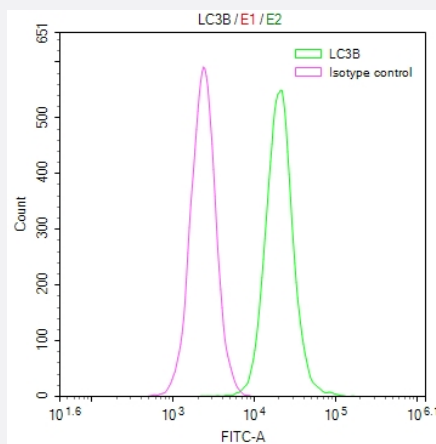
Catalog # RAB07726 Size 100 uL

Applications



Western Blot

Western Blot analysis of Lane 1: HepG2 whole cell lysate; Lane 2: U87 whole cell lysate; Lane3: RAW264.7 whole cell lysate; Lane 4: U251 whole cell lysate; Lane 5: HeLa whole cell tissue lysate.



Flow Cytometry

Overlay Peak curve showing HeLa cells stained with MAP1LC3B recombinant monoclonal antibody, clone 7D11 (red line) at 1:50.

Specification

Product Description	Rabbit recombinant monoclonal antibody raised against human MAP1LC3B.
Antibody Species	Rabbit
Immunogen	Original antibody is raised against a synthetic peptide corresponding to human MAP1LC3B.

Reactivity	Human
Form	Liquid
Purification	Affinity chromatography purification
Isotype	IgG
Recommend Usage	ELISA Flow Cytometry(1:50-1:200) Western Blot(1:500-1:2000) The optimal working dilution should be determined by the end user.
Storage Buffer	In PBS, pH7.4 (150 mM NaCl, 0.02% sodium azide and 50% glycerol)
Storage Instruction	Store at -20°C or -80°C. Aliquot to avoid repeated freezing and thawing.
Note	This product contains sodium azide: a POISONOUS AND HAZARDOUS SUBSTANCE which should be handled by trained staff only.

Applications

- Western Blot

Western Blot analysis of Lane 1: HepG2 whole cell lysate; Lane 2: U87 whole cell lysate; Lane3: RAW264.7 whole cell lysate; Lane 4: U251 whole cell lysate; Lane 5: Hela whole cell tissue lysate.

- Enzyme-linked Immunoabsorbent Assay

- Flow Cytometry

Overlay Peak curve showing Hela cells stained with MAP1LC3B recombinant monoclonal antibody, clone 7D11 (red line) at 1:50.

Gene Info — MAP1LC3B

Entrez GeneID	81631
Protein Accession#	Q9GZQ8
Gene Name	MAP1LC3B
Gene Alias	LC3B, MAP1A/1BLC3
Gene Description	microtubule-associated protein 1 light chain 3 beta

Gene Ontology[Hyperlink](#)**Gene Summary**

The product of this gene is a subunit of neuronal microtubule-associated MAP1A and MAP1B proteins, which are involved in microtubule assembly and important for neurogenesis. Studies on the rat homolog implicate a role for this gene in autophagy, a process that involves the bulk degradation of cytoplasmic component. [provided by RefSeq]

Other Designations

microtubule-associated proteins 1A/1B light chain 3