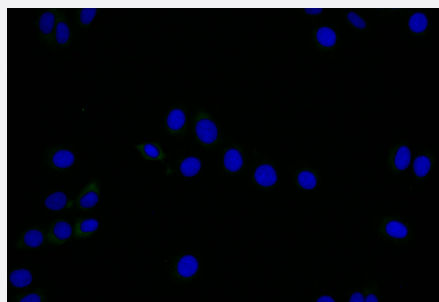


RecomAb™

LYVE1 recombinant monoclonal antibody, clone 11C11

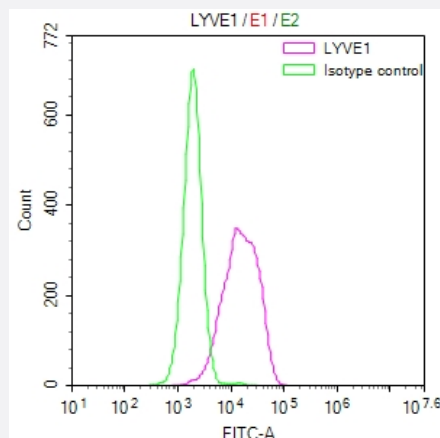
Catalog # RAB07715 Size 100 uL

Applications



Immunofluorescence

Immunofluorescence staining of HepG2 Cells with LYVE1 recombinant monoclonal antibody, clone 11C11 at 1:25, counter-stained with DAPI.



Flow Cytometry

Overlay Peak curve showing HepG2 cells stained with LYVE1 recombinant monoclonal antibody, clone 11C11 (red line) at 1:50.

Specification

Product Description	Rabbit recombinant monoclonal antibody raised against human LYVE1.
Antibody Species	Rabbit
Immunogen	Original antibody is raised against a synthetic peptide corresponding to human LYVE1.
Reactivity	Human
Form	Liquid

Purification	Affinity chromatography purification
Isotype	IgG
Recommend Usage	ELISA Flow Cytometry(1:50-1:200) Immunofluorescence(1:20-1:200) The optimal working dilution should be determined by the end user.
Storage Buffer	In PBS, pH7.4 (150 mM NaCl, 0.02% sodium azide and 50% glycerol)
Storage Instruction	Store at -20°C or -80°C. Aliquot to avoid repeated freezing and thawing.
Note	This product contains sodium azide: a POISONOUS AND HAZARDOUS SUBSTANCE which should be handled by trained staff only.

Applications

- Immunofluorescence

Immunofluorescence staining of HepG2 Cells with LYVE1 recombinant monoclonal antibody, clone 11C11 at 1:25, counter-stained with DAPI.

- Enzyme-linked Immunoabsorbent Assay

- Flow Cytometry

Overlay Peak curve showing HepG2 cells stained with LYVE1 recombinant monoclonal antibody, clone 11C11 (red line) at 1:50.

Gene Info — LYVE1

Entrez GeneID	10894
Protein Accession#	Q9Y5Y7
Gene Name	LYVE1
Gene Alias	CRSBP-1, HAR, LYVE-1, XLKD1
Gene Description	lymphatic vessel endothelial hyaluronan receptor 1
Omim ID	605702
Gene Ontology	Hyperlink

Gene Summary

This gene encodes a type I integral membrane glycoprotein. The encoded protein acts as a receptor and binds to both soluble and immobilized hyaluronan. This protein may function in lymphatic hyaluronan transport and have a role in tumor metastasis. [provided by RefSeq]

Other Designations

cell surface retention sequence binding protein-1|extracellular link domain containing 1|extracellular link domain-containing 1|hyaluronic acid receptor

Disease

- [Lymphedema](#)