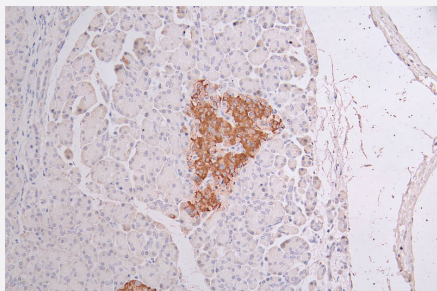


RecomAb™

# KRT10 recombinant monoclonal antibody, clone 18B6

Catalog # RAB07714      Size 100 uL

## Applications



### Immunohistochemistry

Immunohistochemistry image of KRT10 recombinant monoclonal antibody, clone 18B6 diluted at 1:50 and staining in paraffin-embedded human pancreatic tissue performed on a Leica Bond™ system.

## Specification

|                     |   |
|---------------------|---|
| Product Description | Rabbit recombinant monoclonal antibody raised against human KRT10.  |
| Antibody Species    | Rabbit  |
| Immunogen           | Original antibody is raised against a synthetic peptide corresponding to human KRT10.                           |
| Reactivity          | Human   |
| Form                | Liquid  |
| Purification        | Affinity chromatography purification  |
| Isotype             | IgG   |
| Recommend Usage     | ELISA<br>Immunohistochemistry(1:50-1:200)<br>The optimal working dilution should be determined by the end user. |
| Storage Buffer      | In PBS, pH7.4 (150 mM NaCl, 0.02% sodium azide and 50% glycerol)  |
| Storage Instruction | Store at -20°C or -80°C.<br>Aliquot to avoid repeated freezing and thawing.                                     |

**Note**

This product contains sodium azide: a POISONOUS AND HAZARDOUS SUBSTANCE which should be handled by trained staff only.

## Applications

- Immunohistochemistry

Immunohistochemistry image of KRT10 recombinant monoclonal antibody, clone 18B6 diluted at 1:50 and staining in paraffin-embedded human pancreas tissue performed on a Leica Bond™ system.

- Enzyme-linked Immunoabsorbent Assay

## Gene Info — KRT10

|                    |   |
|--------------------|---|
| Entrez GeneID      | <a href="#">3858</a>  |
| Protein Accession# | <a href="#">P13645</a>  |
| Gene Name          | KRT10   |
| Gene Alias         | CK10, K10, KPP  |
| Gene Description   | keratin 10  |
| Omim ID            | <a href="#">113800</a> <a href="#">148080</a> <a href="#">600648</a> <a href="#">607602</a>   |
| Gene Ontology      | <a href="#">Hyperlink</a>   |
| Gene Summary       | This gene encodes a member of the type I (acidic) cytokeratin family, which belongs to the superfamily of intermediate filament (IF) proteins. Keratins are heteropolymeric structural proteins which form the intermediate filament. These filaments, along with actin microfilaments and microtubules, compose the cytoskeleton of epithelial cells. Mutations in this gene are associated with epidermolytic hyperkeratosis. This gene is located within a cluster of keratin family members on chromosome 17q21. [provided by RefSeq] |
| Other Designations | cytokeratin 10  |