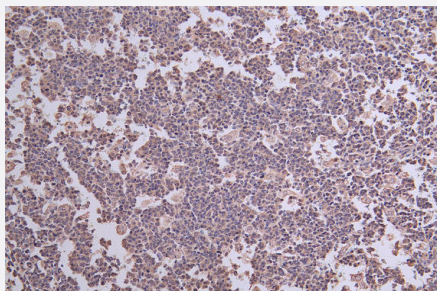


RecomAb™

THEMIS recombinant monoclonal antibody, clone 7G7

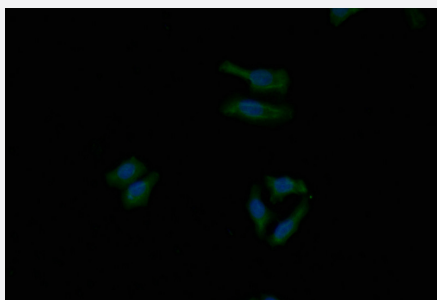
Catalog # RAB07709 Size 100 uL

Applications



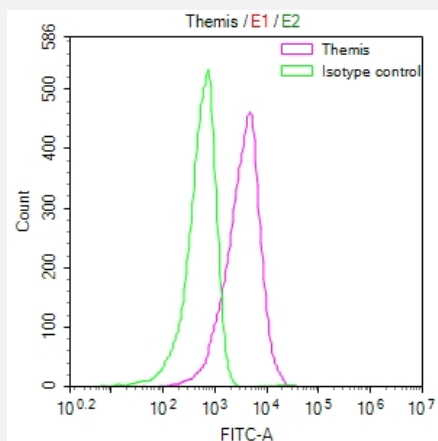
Immunohistochemistry

Immunohistochemistry image of THEMIS recombinant monoclonal antibody, clone 7G7 diluted at 1:50 and staining in paraffin-embedded human tonsil tissue performed on a Leica Bond™ system.



Immunofluorescence

Immunofluorescence staining of HepG2 Cells with THEMIS recombinant monoclonal antibody, clone 7G7 at 1:40, counter-stained with DAPI.



Flow Cytometry

Overlay Peak curve showing Jurkat cells stained with THEMIS recombinant monoclonal antibody, clone 7G7 (red line) at 1:50.

Specification

Product Description	Rabbit recombinant monoclonal antibody raised against human THEMIS.
Antibody Species	Rabbit
Immunogen	Original antibody is raised against a synthetic peptide corresponding to human THEMIS.
Reactivity	Human
Form	Liquid
Purification	Affinity chromatography purification
Isotype	IgG
Recommend Usage	ELISA Flow Cytometry(1:50-1:200) Immunohistochemistry(1:50-1:200) Immunofluorescence(1:20-1:200) The optimal working dilution should be determined by the end user.
Storage Buffer	In PBS, pH7.4 (150 mM NaCl, 0.02% sodium azide and 50% glycerol)
Storage Instruction	Store at -20°C or -80°C. Aliquot to avoid repeated freezing and thawing.
Note	This product contains sodium azide: a POISONOUS AND HAZARDOUS SUBSTANCE which should be handled by trained staff only.

Applications

- Immunohistochemistry

Immunohistochemistry image of THEMIS recombinant monoclonal antibody, clone 7G7 diluted at 1:50 and staining in paraffin-embedded human tonsil tissue performed on a Leica Bond™ system.

- Immunofluorescence

Immunofluorescence staining of HepG2 Cells with THEMIS recombinant monoclonal antibody, clone 7G7 at 1:40, counter-stained with DAPI.

- Enzyme-linked Immunoabsorbent Assay

- Flow Cytometry

Overlay Peak curve showing Jurkat cells stained with THEMIS recombinant monoclonal antibody, clone 7G7 (red line) at 1:50.

Gene Info — THEMIS

Entrez GeneID [387357](#)**Protein Accession#** [Q8N1K5](#)**Gene Name** THEMIS**Gene Alias** C6orf207, FLJ40584, MGC163388, bA325O24.3, bA325O24.4**Gene Description** chromosome 6 open reading frame 190**Gene Ontology** [Hyperlink](#)

Gene Summary This gene encodes a protein that plays a regulatory role in both positive and negative T-cell selection during late thymocyte development. The protein functions through T-cell antigen receptor signaling, and is necessary for proper lineage commitment and maturation of T-cells. Alternative splicing results in multiple transcript variants. [provided by RefSeq]

Other Designations OTTHUMP00000040316|hypothetical protein LOC387357

Disease

- [Breast Neoplasms](#)
- [Cardiovascular Diseases](#)
- [Diabetes Mellitus](#)
- [Edema](#)
- [Genetic Predisposition to Disease](#)