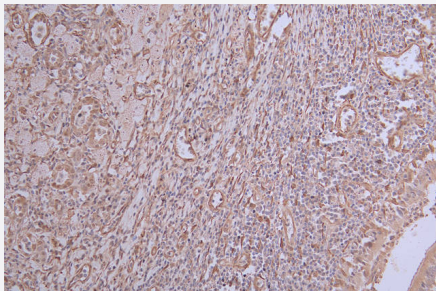


RecomAb™

INMT recombinant monoclonal antibody, clone 31G7

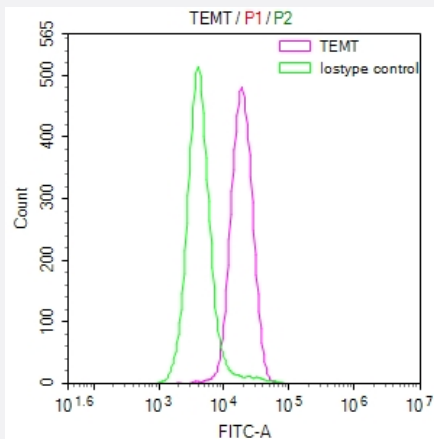
Catalog # RAB07697 Size 100 uL

Applications



Immunohistochemistry

Immunohistochemistry image of INMT recombinant monoclonal antibody, clone 31G7 diluted at 1:100 and staining in paraffin-embedded human lung tissue performed on a Leica Bond™ system.



Flow Cytometry

Overlay Peak curve showing SH-SY5Y cells stained with INMT recombinant monoclonal antibody, clone 31G7 (red line) at 1:50.

Specification

Product Description	Rabbit recombinant monoclonal antibody raised against human INMT.
Antibody Species	Rabbit
Immunogen	Original antibody is raised against a synthetic peptide corresponding to human INMT.
Reactivity	Human
Form	Liquid

Purification	Affinity chromatography purification
Isotype	IgG
Recommend Usage	ELISA Flow Cytometry(1:50-1:200) Immunohistochemistry(1:50-1:200) The optimal working dilution should be determined by the end user.
Storage Buffer	In PBS, pH7.4 (150 mM NaCl, 0.02% sodium azide and 50% glycerol)
Storage Instruction	Store at -20°C or -80°C. Aliquot to avoid repeated freezing and thawing.
Note	This product contains sodium azide: a POISONOUS AND HAZARDOUS SUBSTANCE which should be handled by trained staff only.

Applications

- Immunohistochemistry

Immunohistochemistry image of INMT recombinant monoclonal antibody, clone 31G7 diluted at 1:100 and staining in paraffin-embedded human lung tissue performed on a Leica Bond™ system.

- Enzyme-linked Immunoabsorbent Assay

- Flow Cytometry

Overlay Peak curve showing SH-SY5Y cells stained with INMT recombinant monoclonal antibody, clone 31G7 (red line) at 1:50.

Gene Info — INMT

Entrez GeneID	11185
Protein Accession#	O95050
Gene Name	INMT
Gene Alias	MGC125940, MGC125941
Gene Description	indolethylamine N-methyltransferase
Omim ID	604854
Gene Ontology	Hyperlink

Gene Summary

N-methylation of endogenous and xenobiotic compounds is a major method by which they are degraded. This gene encodes an enzyme that N-methylates indoles such as tryptamine. [provided by RefSeq]

Other Designations

amine N-methyltransferase|aromatic alkylamine N-methyltransferase|arylamine N-methyltransferase|nicotine N-methyltransferase|thioester S-methyltransferase-like

Pathway

- [Tryptophan metabolism](#)

Disease

- [Cardiovascular Diseases](#)
- [Diabetes Mellitus](#)
- [Edema](#)