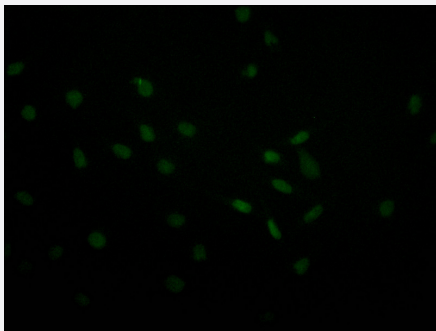


RecomAb™

USP22 recombinant monoclonal antibody, clone 18E3

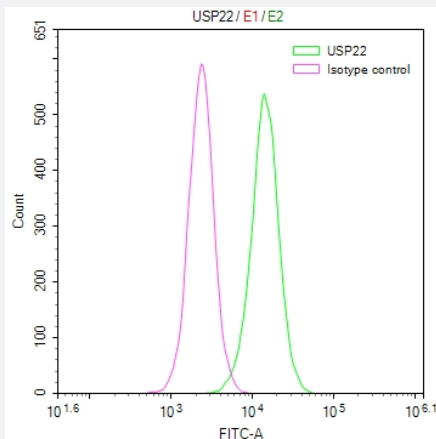
Catalog # RAB07685 Size 100 uL

Applications



Immunofluorescence

Immunofluorescence staining of MCF-7 Cells with USP22 recombinant monoclonal antibody, clone 18E3 at 1:30, counter-stained with DAPI.



Flow Cytometry

Overlay Peak curve showing Hela cells stained with USP22 recombinant monoclonal antibody, clone 18E3 (red line) at 1:50.

Specification

Product Description	Rabbit recombinant monoclonal antibody raised against human USP22.
Antibody Species	Rabbit
Immunogen	Original antibody is raised against a synthetic peptide corresponding to human USP22.
Reactivity	Human
Form	Liquid

Purification	Affinity chromatography purification
Isotype	IgG
Recommend Usage	ELISA Flow Cytometry(1:50-1:200) Immunofluorescence(1:20-1:200) The optimal working dilution should be determined by the end user.
Storage Buffer	In PBS, pH7.4 (150 mM NaCl, 0.02% sodium azide and 50% glycerol)
Storage Instruction	Store at -20°C or -80°C. Aliquot to avoid repeated freezing and thawing.
Note	This product contains sodium azide: a POISONOUS AND HAZARDOUS SUBSTANCE which should be handled by trained staff only.

Applications

- Immunofluorescence

Immunofluorescence staining of MCF-7 Cells with USP22 recombinant monoclonal antibody, clone 18E3 at 1:30, counter-stained with DAPI.

- Enzyme-linked Immunoabsorbent Assay

- Flow Cytometry

Overlay Peak curve showing Hela cells stained with USP22 recombinant monoclonal antibody, clone 18E3 (red line) at 1:50.

Gene Info — USP22

Entrez GeneID	23326
Protein Accession#	Q9UPT9
Gene Name	USP22
Gene Alias	KIAA1063, USP3L
Gene Description	ubiquitin specific peptidase 22
Gene Ontology	Hyperlink
Other Designations	deubiquitinating enzyme 22 ubiquitin carboxyl-terminal hydrolase 22 ubiquitin specific peptidase 3-like ubiquitin specific protease 22 ubiquitin thiolesterase 22 ubiquitin-specific processing protease 22