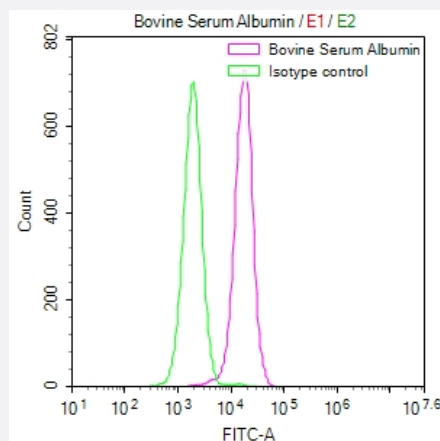


RecomAb™

ALB recombinant monoclonal antibody, clone 30F6

Catalog # RAB07682 Size 100 uL

Applications



Flow Cytometry

Overlay Peak curve showing HepG2 cells stained with ALB recombinant monoclonal antibody, clone 30F6 (red line) at 1:50.

Specification

Product Description	Rabbit recombinant monoclonal antibody raised against human ALB.
Antibody Species	Rabbit
Immunogen	Original antibody is raised against a synthetic peptide corresponding to human ALB.
Reactivity	Human
Form	Liquid
Purification	Affinity chromatography purification
Isotype	IgG
Recommend Usage	ELISA Flow Cytometry(1:50-1:200) The optimal working dilution should be determined by the end user.
Storage Buffer	In PBS, pH7.4 (150 mM NaCl, 0.02% sodium azide and 50% glycerol)

Storage Instruction

Store at -20°C or -80°C.
Aliquot to avoid repeated freezing and thawing.

Note

This product contains sodium azide: a POISONOUS AND HAZARDOUS SUBSTANCE which should be handled by trained staff only.

Applications

- Enzyme-linked Immunoabsorbent Assay
- Flow Cytometry

Overlay Peak curve showing HepG2 cells stained with ALB recombinant monoclonal antibody, clone 30F6 (red line) at 1:50.

Gene Info — ALB

Entrez GeneID[213](#)**Protein Accession#**[P02768](#)**Gene Name**

ALB

Gene Alias

DKFZp779N1935, PRO0883, PRO0903, PRO1341

Gene Description

albumin

Omim ID[103600 194470](#)**Gene Ontology**[Hyperlink](#)**Gene Summary**

Albumin is a soluble, monomeric protein which comprises about one-half of the blood serum protein. Albumin functions primarily as a carrier protein for steroids, fatty acids, and thyroid hormones and plays a role in stabilizing extracellular fluid volume. Albumin is a globular unglycosylated serum protein of molecular weight 65,000. Albumin is synthesized in the liver as preproalbumin which has an N-terminal peptide that is removed before the nascent protein is released from the rough endoplasmic reticulum. The product, proalbumin, is in turn cleaved in the Golgi vesicles to produce the secreted albumin. [provided by RefSeq]

Other Designations

cell growth inhibiting protein 42|growth-inhibiting protein 20|serum albumin

Disease

- [Alzheimer disease](#)

- [Diabetes Mellitus](#)
- [Hepatitis](#)