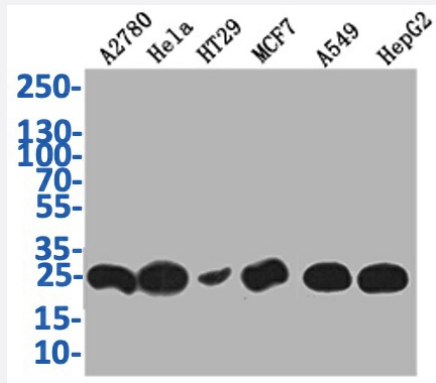


RecomAb™

WFDC2 recombinant monoclonal antibody, clone 17D2

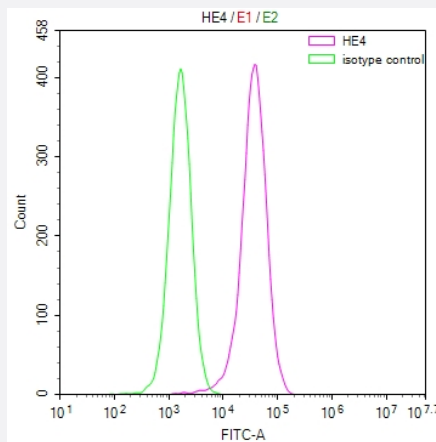
Catalog # RAB07662 Size 100 uL

Applications



Western Blot

Western Blot analysis of Lane 1: A2780 whole cell lysate; Lane 2: HeLa whole cell lysate; Lane 3: HT29 whole cell lysate; Lane 4: MCF7 whole cell lysate; Lane 5: A549 whole cell lysate; Lane 6: HepG2 whole cell lysate.



Flow Cytometry

Overlay Peak curve showing MCF7 cells stained with WFDC2 recombinant monoclonal antibody, clone 17D2 (red line) at 1:50.

Specification

Product Description	Rabbit recombinant monoclonal antibody raised against human WFDC2.
Antibody Species	Rabbit
Immunogen	Original antibody is raised against a synthetic peptide corresponding to human WFDC2.
Reactivity	Human

Form	Liquid
Purification	Affinity chromatography purification
Isotype	IgG
Recommend Usage	ELISA Flow Cytometry(1:50-1:200) Western Blot(1:500-1:2000) The optimal working dilution should be determined by the end user.
Storage Buffer	In PBS, pH7.4 (150 mM NaCl, 0.02% sodium azide and 50% glycerol)
Storage Instruction	Store at -20°C or -80°C. Aliquot to avoid repeated freezing and thawing.
Note	This product contains sodium azide: a POISONOUS AND HAZARDOUS SUBSTANCE which should be handled by trained staff only.

Applications

- Western Blot

Western Blot analysis of Lane 1: A2780 whole cell lysate; Lane 2: Hela whole cell lysate; Lane3: HT29 whole cell lysate; Lane 4: MCF7 whole cell lysate; Lane 5: A549 whole cell lysate; Lane 6: HepG2 whole cell lysate.

- Enzyme-linked Immunoabsorbent Assay

- Flow Cytometry

Overlay Peak curve showing MCF7 cells stained with WFDC2 recombinant monoclonal antibody, clone 17D2 (red line) at 1:50.

Gene Info — WFDC2

Entrez GeneID	10406
Protein Accession#	Q14508
Gene Name	WFDC2
Gene Alias	HE4, MGC57529, WAP5, dJ461P17.6
Gene Description	WAP four-disulfide core domain 2
Gene Ontology	Hyperlink

Gene Summary

This gene encodes a protein that is a member of the WFDC domain family. The WFDC domain, or WAP Signature motif, contains eight cysteines forming four disulfide bonds at the core of the protein, and functions as a protease inhibitor in many family members. This gene is expressed in pulmonary epithelial cells, and was also found to be expressed in some ovarian cancers. The encoded protein is a small secretory protein, which may be involved in sperm maturation. [provided by RefSeq]

Other Designations

OTTHUMP00000031141|WAP domain containing protein HE4-V4|epididymal secretory protein E4|epididymis-specific, whey-acidic protein type, four-disulfide core|major epididymis-specific protein E4