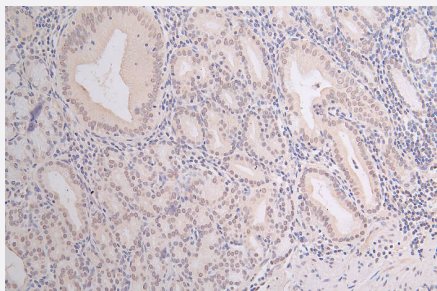


RecomAb™

HIST1H3A recombinant monoclonal antibody, clone 30A7

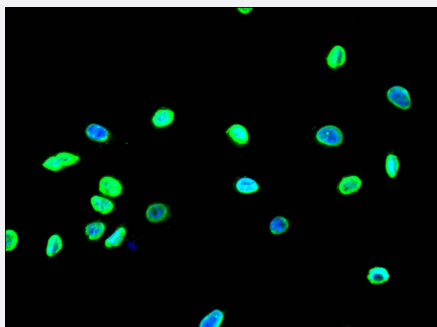
Catalog # RAB07659 Size 100 uL

Applications



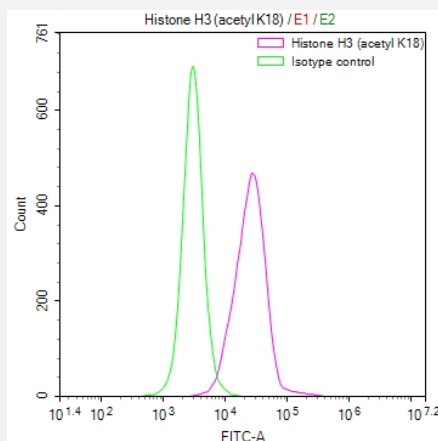
Immunohistochemistry

Immunohistochemistry image of HIST1H3A recombinant monoclonal antibody, clone 30A7 diluted at 1:100 and staining in paraffin-embedded human gastric cancer performed on a Leica Bond™ system.



Immunofluorescence

Immunofluorescence staining of A549 Cells with HIST1H3A recombinant monoclonal antibody, clone 30A7 at 1:50, counter-stained with DAPI.



Flow Cytometry

Overlay Peak curve showing A549 cells stained with HIST1H3A recombinant monoclonal antibody, clone 30A7 (red line) at 1:100.

Specification

Product Description	Rabbit recombinant monoclonal antibody raised against human HIST1H3A.
Antibody Species	Rabbit
Immunogen	Original antibody is raised against a synthetic peptide corresponding to human HIST1H3A.
Reactivity	Human
Form	Liquid
Purification	Affinity chromatography purification
Isotype	IgG
Recommend Usage	ELISA Flow Cytometry(1:50-1:200) Immunohistochemistry(1:50-1:200) Immunofluorescence(1:20-1:200) The optimal working dilution should be determined by the end user.
Storage Buffer	In PBS, pH7.4 (150 mM NaCl, 0.02% sodium azide and 50% glycerol)
Storage Instruction	Store at -20°C or -80°C. Aliquot to avoid repeated freezing and thawing.
Note	This product contains sodium azide: a POISONOUS AND HAZARDOUS SUBSTANCE which should be handled by trained staff only.

Applications

- Immunohistochemistry

Immunohistochemistry image of HIST1H3A recombinant monoclonal antibody, clone 30A7 diluted at 1:100 and staining in paraffin-embedded human gastric cancer performed on a Leica Bond™ system.

- Immunofluorescence

Immunofluorescence staining of A549 Cells with HIST1H3A recombinant monoclonal antibody, clone 30A7 at 1:50, counter-stained with DAPI.

- Enzyme-linked Immunoabsorbent Assay

- Flow Cytometry

Overlay Peak curve showing A549 cells stained with HIST1H3A recombinant monoclonal antibody, clone 30A7 (red line) at 1:100.

Gene Info — HIST1H3A

Entrez GeneID [8350](#)**Protein Accession#** [P68431](#)**Gene Name** HIST1H3A**Gene Alias** H3/A, H3FA**Gene Description** histone cluster 1, H3a**Omim ID** [602810](#)**Gene Ontology** [Hyperlink](#)

Gene Summary

Histones are basic nuclear proteins that are responsible for the nucleosome structure of the chromosomal fiber in eukaryotes. This structure consists of approximately 146 bp of DNA wrapped around a nucleosome, an octamer composed of pairs of each of the four core histones (H2A, H2B, H3, and H4). The chromatin fiber is further compacted through the interaction of a linker histone, H1, with the DNA between the nucleosomes to form higher order chromatin structures. This gene is intronless and encodes a member of the histone H3 family. Transcripts from this gene lack polyA tails; instead, they contain a palindromic termination element. This gene is found in the large histone gene cluster on chromosome 6p22-p21.3. [provided by RefSeq]

Other Designations H3 histone family, member A|histone 1, H3a

Pathway

- [Systemic lupus erythematosus](#)