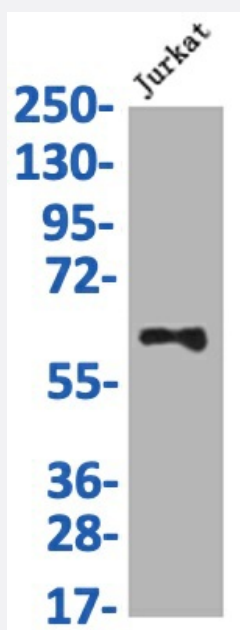


RecomAb™

SLC2A3 recombinant monoclonal antibody, clone 14B1

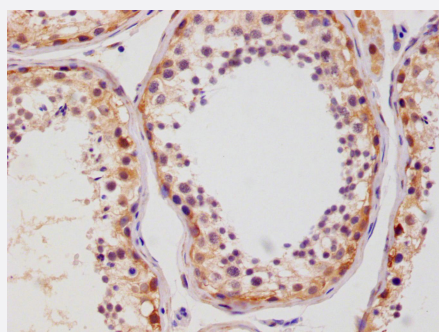
Catalog # RAB07649 Size 100 uL

Applications



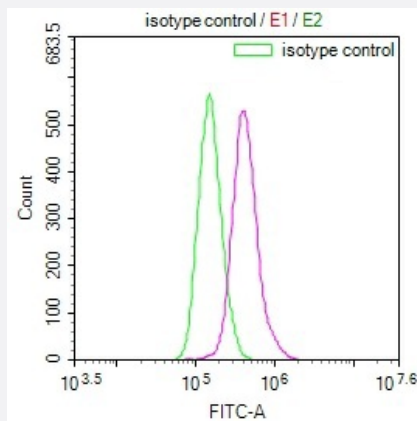
Western Blot

Western Blot analysis of Lane 1: Jurkat whole cell lysate.



Immunohistochemistry

Immunohistochemistry image of SLC2A3 recombinant monoclonal antibody, clone 14B1 diluted at 1:100 and staining in paraffin-embedded human testis tissue performed on a Leica Bond™ system.



Flow Cytometry

Overlay Peak curve showing MCF7 cells stained with SLC2A3 recombinant monoclonal antibody, clone 14B1 (red line) at 1:100.

Specification

Product Description	Rabbit recombinant monoclonal antibody raised against human SLC2A3.
Antibody Species	Rabbit
Immunogen	Original antibody is raised against a synthetic peptide corresponding to human SLC2A3.
Reactivity	Human
Form	Liquid
Purification	Affinity chromatography purification
Isotype	IgG
Recommend Usage	ELISA Flow Cytometry(1:50-1:200) Immunohistochemistry(1:50-1:200) Western Blot(1:500-1:2000) The optimal working dilution should be determined by the end user.
Storage Buffer	In PBS, pH7.4 (150 mM NaCl, 0.02% sodium azide and 50% glycerol)
Storage Instruction	Store at -20°C or -80°C. Aliquot to avoid repeated freezing and thawing.
Note	This product contains sodium azide: a POISONOUS AND HAZARDOUS SUBSTANCE which should be handled by trained staff only.

Applications

- Western Blot

Western Blot analysis of Lane 1: Jurkat whole cell lysate.

- Immunohistochemistry

Immunohistochemistry image of SLC2A3 recombinant monoclonal antibody, clone 14B1 diluted at 1:100 and staining in paraffin-embedded human testis tissue performed on a Leica Bond™ system.

- Enzyme-linked Immunoabsorbent Assay

- Flow Cytometry

Overlay Peak curve showing MCF7 cells stained with SLC2A3 recombinant monoclonal antibody, clone 14B1 (red line) at 1:100.

Gene Info — SLC2A3

Entrez GeneID	6515
---------------	----------------------

Protein Accession#	P11169
--------------------	------------------------

Gene Name	SLC2A3
-----------	--------

Gene Alias	FLJ90380, GLUT3
------------	-----------------

Gene Description	solute carrier family 2 (facilitated glucose transporter), member 3
------------------	---

Omim ID	138170
---------	------------------------

Gene Ontology	Hyperlink
---------------	---------------------------

Gene Summary	O
--------------	---

Other Designations	GLUCOSE TRANSPORTER TYPE 3, BRAIN
--------------------	-----------------------------------

Disease

- [Anorexia Nervosa](#)
- [Bulimia](#)
- [Genetic Predisposition to Disease](#)
- [Hyperparathyroidism](#)