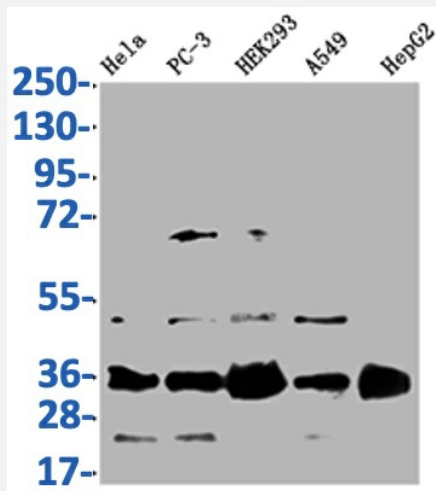


RecomAb™

HMGCL recombinant monoclonal antibody, clone 22H11

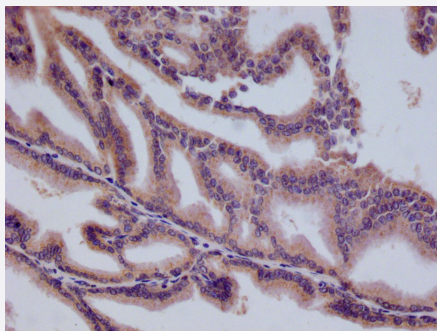
Catalog # RAB07644 Size 100 uL

Applications



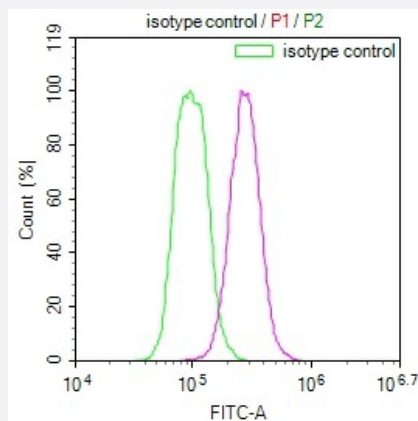
Western Blot

Western Blot analysis of Lane 1: HeLa whole cell lysate; Lane 2: PC-3 whole cell lysate; Lane3: HEK293 whole cell lysate; Lane 4: A549 whole cell lysate; Lane 5: HepG2 whole cell lysate.



Immunohistochemistry

Immunohistochemistry image of HMGCL recombinant monoclonal antibody, clone 22H11 diluted at 1:100 and staining in paraffin-embedded human prostate tissue performed on a Leica Bond™ system.



Flow Cytometry

Overlay Peak curve showing HeLa cells stained with HMGCL recombinant monoclonal antibody, clone 22H11 (red line) at 1:100.

Specification

Product Description	Rabbit recombinant monoclonal antibody raised against human HMGCL.
Antibody Species	Rabbit
Immunogen	Original antibody is raised against a synthetic peptide corresponding to human HMGCL.
Reactivity	Human
Form	Liquid
Purification	Affinity chromatography purification
Isotype	IgG
Recommend Usage	ELISA Flow Cytometry(1:50-1:200) Immunohistochemistry(1:50-1:200) Western Blot(1:500-1:2000) The optimal working dilution should be determined by the end user.
Storage Buffer	In PBS, pH7.4 (150 mM NaCl, 0.02% sodium azide and 50% glycerol)
Storage Instruction	Store at -20°C or -80°C. Aliquot to avoid repeated freezing and thawing.
Note	This product contains sodium azide: a POISONOUS AND HAZARDOUS SUBSTANCE which should be handled by trained staff only.

Applications

● Western Blot

Western Blot analysis of Lane 1: Hela whole cell lysate; Lane 2: PC-3 whole cell lysate; Lane3: HEK293 whole cell lysate; Lane 4: A549 whole cell lysate; Lane 5: HepG2 whole cell lysate.

● Immunohistochemistry

Immunohistochemistry image of HMGCL recombinant monoclonal antibody, clone 22H11 diluted at 1:100 and staining in paraffin-embedded human prostate tissue performed on a Leica Bond™ system.

● Enzyme-linked Immunoabsorbent Assay

● Flow Cytometry

Overlay Peak curve showing Hela cells stained with HMGCL recombinant monoclonal antibody, clone 22H11 (red line) at 1:100.

Gene Info — HMGCL

Entrez GeneID	3155
Protein Accession#	P35914
Gene Name	HMGCL
Gene Alias	HL
Gene Description	3-hydroxymethyl-3-methylglutaryl-Coenzyme A lyase
Omim ID	246450
Gene Ontology	Hyperlink
Other Designations	3-hydroxy-3-methylglutaryl-Coenzyme A lyase (hydroxymethylglutaricaciduria) 3-hydroxymethyl-3-methylglutaryl-Coenzyme A lyase (hydroxymethylglutaricaciduria) OTTHUMP00000044830 hydroxymethylglutaricaciduria

Pathway

- [Butanoate metabolism](#)
- [Metabolic pathways](#)
- [Synthesis and degradation of ketone bodies](#)
- [Valine](#)

Disease

- [Atherosclerosis](#)