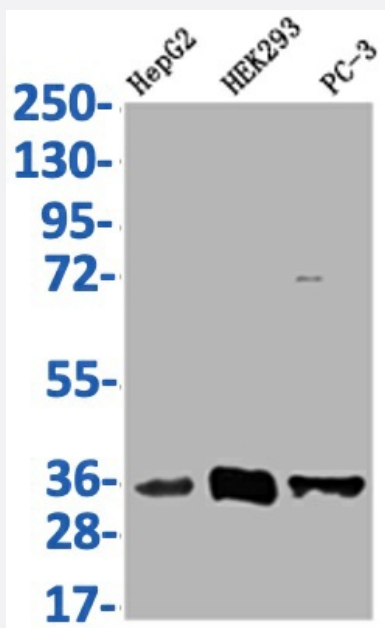


RecomAb™

# NTHL1 recombinant monoclonal antibody, clone 22H10

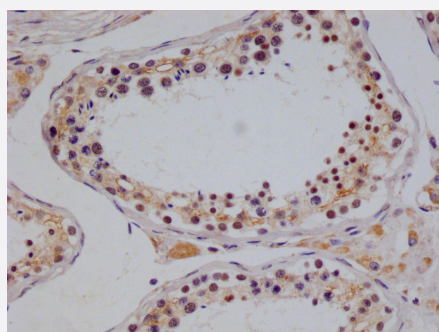
Catalog # RAB07643      Size 100 uL

## Applications



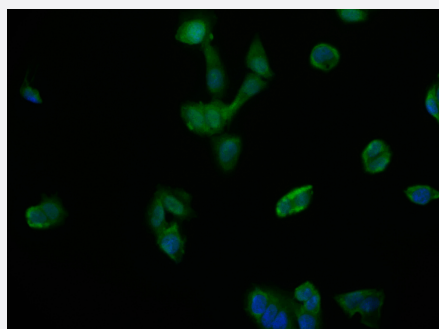
### Western Blot

Western Blot analysis of Lane 1: HepG2 whole cell lysate; Lane 2: HEK293 whole cell lysate; Lane3: PC-3 whole cell lysate.



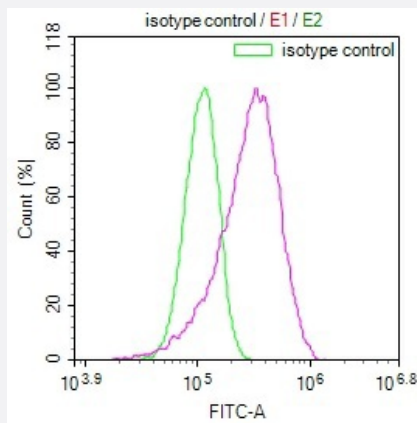
### Immunohistochemistry

Immunohistochemistry image of NTHL1 recombinant monoclonal antibody, clone 22H10 diluted at 1:100 and staining in paraffin-embedded human testis tissue performed on a Leica Bond™ system.



### Immunofluorescence

Immunofluorescence staining of PC-3 Cells with NTHL1 recombinant monoclonal antibody, clone 22H10 at 1:50, counter-stained with DAPI.



## Flow Cytometry

Overlay Peak curve showing HepG2 cells stained with NTHL1 recombinant monoclonal antibody, clone 22H10 (red line) at 1:100.

## Specification

<b>Product Description</b>	Rabbit recombinant monoclonal antibody raised against human NTHL1.
<b>Antibody Species</b>	Rabbit
<b>Immunogen</b>	Original antibody is raised against a synthetic peptide corresponding to human NTHL1.
<b>Reactivity</b>	Human
<b>Form</b>	Liquid
<b>Purification</b>	Affinity chromatography purification
<b>Isotype</b>	IgG
<b>Recommend Usage</b>	ELISA Flow Cytometry(1:50-1:200) Immunohistochemistry(1:50-1:200) Immunofluorescence(1:20-1:200) Western Blot(1:500-1:2000) The optimal working dilution should be determined by the end user.
<b>Storage Buffer</b>	In PBS, pH7.4 (150 mM NaCl, 0.02% sodium azide and 50% glycerol)
<b>Storage Instruction</b>	Store at -20°C or -80°C. Aliquot to avoid repeated freezing and thawing.
<b>Note</b>	This product contains sodium azide: a POISONOUS AND HAZARDOUS SUBSTANCE which should be handled by trained staff only.

## Applications

- Western Blot

Western Blot analysis of Lane 1: HepG2 whole cell lysate; Lane 2: HEK293 whole cell lysate; Lane3: PC-3 whole cell lysate.

- Immunohistochemistry

Immunohistochemistry image of NTHL1 recombinant monoclonal antibody, clone 22H10 diluted at 1:100 and staining in paraffin-embedded human testis tissue performed on a Leica Bond™ system.

- Immunofluorescence

Immunofluorescence staining of PC-3 Cells with NTHL1 recombinant monoclonal antibody, clone 22H10 at 1:50, counter-stained with DAPI.

- Enzyme-linked Immunoabsorbent Assay

- Flow Cytometry

Overlay Peak curve showing HepG2 cells stained with NTHL1 recombinant monoclonal antibody, clone 22H10 (red line) at 1:100.

## Gene Info — NTHL1

Entrez GeneID [4913](#)

Protein Accession# [P78549](#)

Gene Name NTHL1

Gene Alias NTH1, OCTS3

Gene Description nth endonuclease III-like 1 (E. coli)

Omim ID [602656](#)

Gene Ontology [Hyperlink](#)

**Gene Summary** The protein encoded by this gene is a DNA N-glycosylase of the endonuclease III family. Like a similar protein in E. coli, the encoded protein has DNA glycosylase activity on DNA substrates containing oxidized pyrimidine residues and has apurinic/apyrimidinic lyase activity. [provided by RefSeq]

**Other Designations** OTTHUMP00000158939|nth endonuclease III-like 1

## Pathway

- [Base excision repair](#)

## Disease

- [Adenomatous Polyposis Coli](#)
- [Colon cancer](#)
- [Genetic Predisposition to Disease](#)
- [Graft vs Host Disease](#)
- [Intestinal Neoplasms](#)
- [Multiple Sclerosis](#)
- [Stomach Neoplasms](#)